

F.A.I. RTE.	SECTION	COUNTY	TOTAL SHEETS	SHEET NO.
90/94	2004-065TS	COOK	62	1

STATE OF ILLINOIS
DEPARTMENT OF TRANSPORTATION
DIVISION OF HIGHWAYS

**PLANS FOR PROPOSED
FEDERAL AID HIGHWAY**

F.A.I. ROUTE 90/94 (DAN RYAN EXPRESSWAY)
SECTION 2004-065TS
PROJECT: IM-094-3(371)056
TRAFFIC SIGNALS AT 47TH STREET WITH
WENTWORTH AVENUE - LASALLE STREET AND
WELLS STREET - WENTWORTH AVENUE
COOK COUNTY
C-91-289-04

INDEX OF SHEETS

SHEET	DESCRIPTION
1	COVER SHEET
2	GENERAL NOTES AND PROJECT COMMITMENTS
3-6	SUGGESTED CONSTRUCTION SCHEDULE
7	SUMMARY OF QUANTITIES
8-18	ALIGNMENT PLANS, SURVEY TIES AND CONTROL POINTS
19	TRAFFIC CONTROL SIGNALS BILL OF MATERIALS, INDEX OF STANDARD DRAWINGS AND TRAFFIC SIGNAL NOTES
20-23	TRAFFIC CONTROL SIGNAL PLANS
24	CDOT ELECTRICAL GENERAL NOTES
25	CDOT ELECTRICAL SYMBOLS AND ABBREVIATIONS
26	47TH STREET BRIDGE EXISTING CONDITIONS
27	47TH STREET BRIDGE ROADWAY LIGHTING IMPROVEMENTS
28	MISCELLANEOUS ELECTRICAL DETAILS
29	TEMPORARY LIGHTING DETAILS
30-61	BOE STANDARD DETAILS
62	TEMPORARY INFORMATION SIGNING

IDOT HIGHWAY STANDARDS

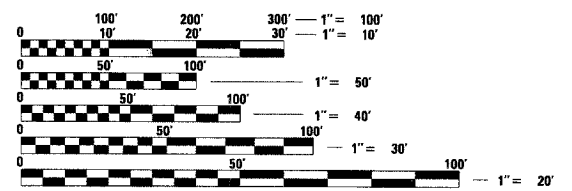
STANDARD	DESCRIPTION
000001-04	STANDARD SYMBOLS, ABBREVIATIONS, AND PATTERNS
001006	DECIMAL OF AN INCH AND OF A FOOT
701701-04	URBAN LANE CLOSURE MULTILANE INTERSECTION
701801-03	LANE CLOSURE MULTILANE 1W OR 2W CROSSWALK OR SIDEWALK CLOSURE
702001-05	TRAFFIC CONTROL DEVICES

PROJECT LOCATED IN CITY OF CHICAGO

DESIGN DESIGNATION

WENTWORTH AVE: 6259 (20) URBAN COLLECTOR
WELLS ST: 8275 (20) URBAN COLLECTOR

FRONTAGE ROADS:	ADT (2020)	DESIGN SPEED	POSTED SPEED
WENTWORTH AVE	11,000	30	25
WELLS ST	15,000	30	25



FULL SIZE PLANS HAVE BEEN PREPARED USING STANDARD ENGINEERING SCALES. REDUCED SIZED PLANS WILL NOT CONFORM TO STANDARD SCALES. IN MAKING MEASUREMENTS ON REDUCED PLANS, THE ABOVE SCALES MAY BE USED.

DIGGER:
CHICAGO UTILITY ALERT NETWORK
(312) 744-7000

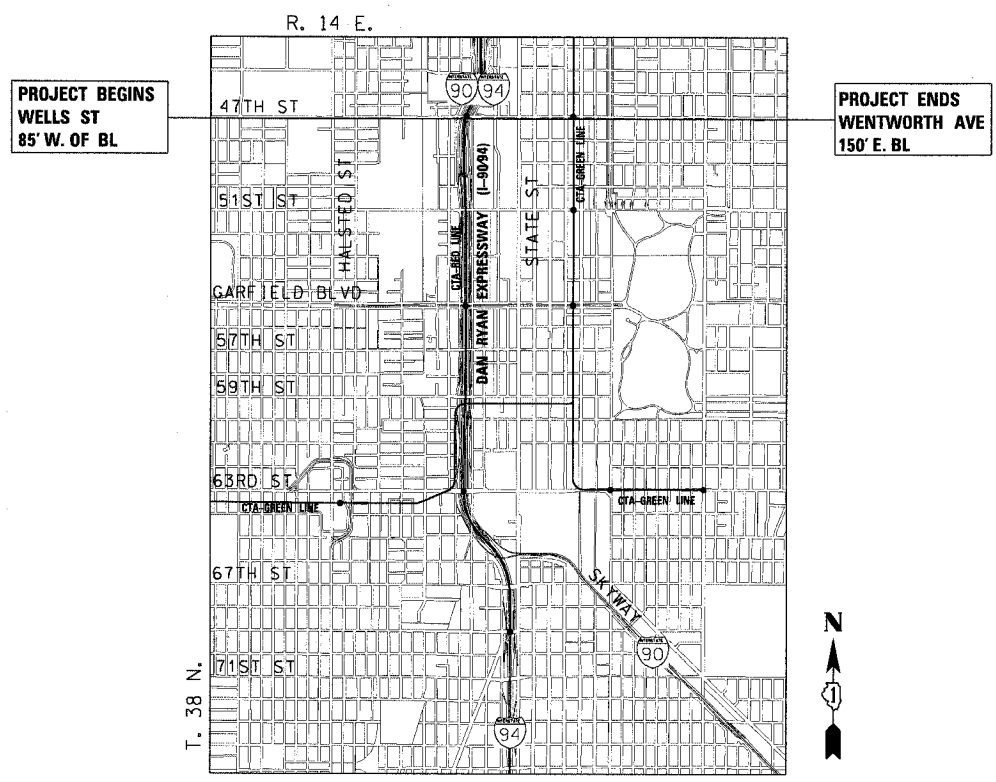
CONTRACT NO. 62804

DISTRICT ONE DESIGN/CONSULTANT SERVICES PROJECT MANAGER
MARK REZNEK (847) 705-4242 / R. SHAH (847) 705-4437

D-91-419-01



LOCATION OF SECTION INDICATED THUS: - [black bar] -



LOCATION MAP

0 1/2 MILE 1 MILE 1" = 1/2 MILE
GROSS LENGTH OF PROJECT = 590 FT (0.112 MILES)
NET LENGTH OF PROJECT = 590 FT (0.112 MILES)

JOHN ALLEN LUKOWSKI
062-053522
REGISTERED PROFESSIONAL ENGINEER OF ILLINOIS

John A. Lukowski
1-23
SHEET NOS. 11-20-05 EXPIRES 10-29-04 DATE

JAMES P. COLEMAN
062-033912
REGISTERED PROFESSIONAL ENGINEER OF ILLINOIS

James P. Coleman
24-29
SHEET NOS. 11-30-05 EXPIRES 10-29-04 DATE

STATE OF ILLINOIS
DEPARTMENT OF TRANSPORTATION
DIVISION OF HIGHWAYS

SUBMITTED November 5, 20 04
Dina O'Keefe/AP DISTRICT ENGINEER
December 10, 20 04
Mike Hine/ED ENGINEER OF DESIGN AND ENVIRONMENT
December 10, 20 04
Victor Maden/D DIRECTOR, DIVISION OF HIGHWAYS

**PRINTED BY THE AUTHORITY
OF THE STATE OF ILLINOIS**

CTE ENGINEERS
CONSOER TOWNSEND ENVIRODYNE ENGINEERS, INC.
303 EAST WACKER DRIVE, SUITE 600
CHICAGO ILLINOIS 60601-5212, PHONE: (312) 938-0300