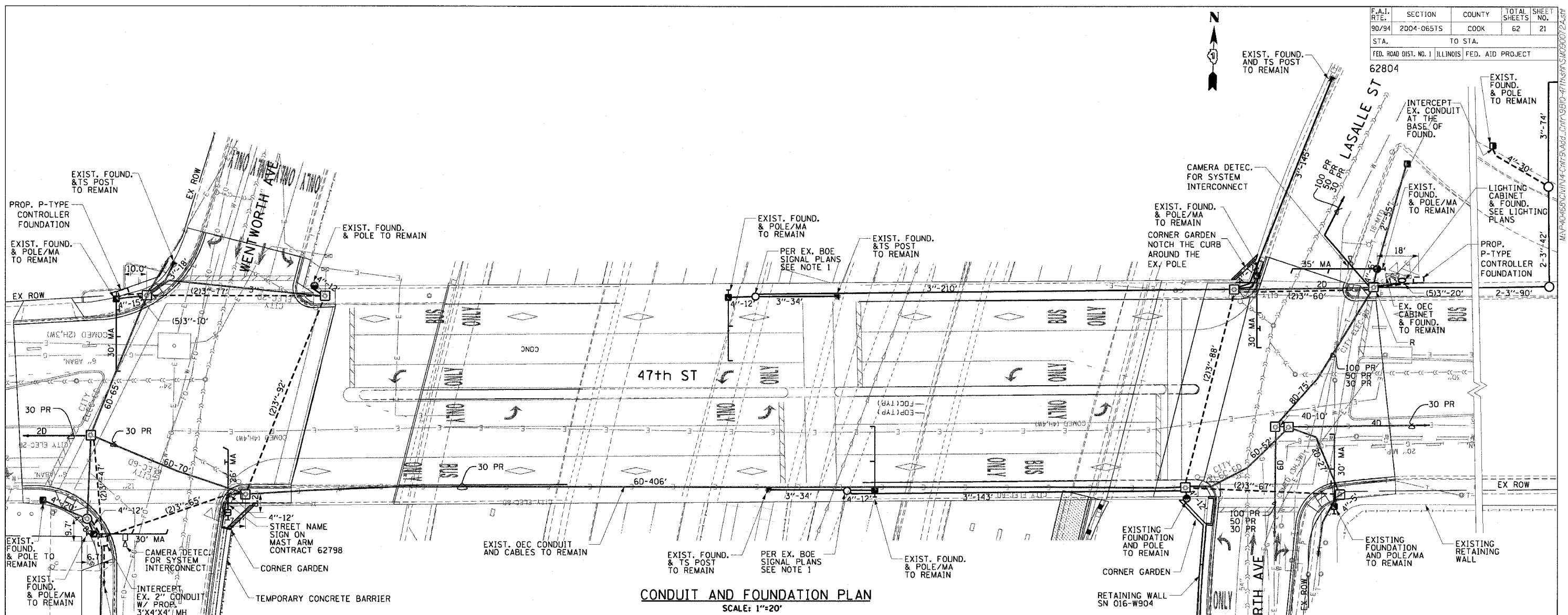


F.A.I. RT. NO.	SECTION	COUNTY	TOTAL SHEETS	SHEET NO.
90/94	2004-065TS	COOK	62	21
STA.	TO STA.			
FED. ROAD DIST. NO. 1		ILLINOIS	FED. AID PROJECT	

62804



CONDUIT AND FOUNDATION PLAN
SCALE: 1"=20'

NOTE:
AVOID THE EXISTING SHALLOW WINGWALL SPREAD FOOTING DURING THE CONSTRUCTION OF PROPOSED FOUNDATION ON THE SE CORNER OF WELLS AND 47TH

CONSTRUCTION NOTES:

- THIS INTERSECTION CONTAINS EXISTING FIRE ALARM/POLICE COMMUNICATION SYSTEM WHICH WILL REMAIN IN-PLACE. THE CONTRACTOR SHALL BE RESPONSIBLE FOR NOTIFYING THE OEC (MR. JEFF CAIRNS: 312-746-9840) PRIOR TO THE COMMENCEMENT OF ALL WORK AND SHALL TAKE EXTREME CARE NOT TO IMPACT OR DAMAGE THE OEC FACILITIES. REQUIRED COORDINATION OF WORK WITH THE OEC SHALL BE CONSIDERED INCIDENTAL TO THE CONTRACT AND NO ADDITIONAL COMPENSATION WILL BE GRANTED. ANY DAMAGE TO THE OEC FACILITIES SHALL BE PAID BY THE CONTRACTOR AT HIS/HER EXPENSE.
- CONTRACTOR MUST NOTIFY THE CHICAGO DEPARTMENT OF TRANSPORTATION'S BUREAU OF TRAFFIC (312)744-0330, 72 HOURS BEFORE COMMENCING CONSTRUCTION OR CHANGING TRAFFIC FLOW.
- CONTRACTOR TO CONTACT ALL UTILITIES PRIOR TO EXCAVATION FOR EXACT LOCATION OF THEIR UNDERGROUND FACILITIES.
- CONTRACTOR SHALL VERIFY THE EX. CABLE ROUTING PRIOR TO INSTALLATION OF PROP. TRAFFIC SIGNAL CABLES.
- UNLESS OTHERWISE NOTED, ALL DIMENSIONS ARE TO FACE OF CURB. A MINIMUM DISTANCE OF 3 FEET IS DESIRABLE FROM CURB FACE TO POLE/PEDESTAL CENTERLINE.
- ALL FOUNDATIONS IN SIDEWALK TO BE INSTALLED PER DRAWING #828 & #837.
- ALL PEDESTRIAN SIGNALS TO BE 16" L.E.D. SINGLE FACE. MOUNT ALL PEDESTRIAN SIGNALS BELOW TRAFFIC SIGNALS WHERE APPLICABLE.
- ALL TRAFFIC SIGNALS TO BE 12" LED.
- ALL TRAFFIC SIGNAL EQUIPMENT TO BE PAINTED BLACK.
- UNLESS OTHERWISE INDICATED, CONDUITS UNDER SIDEWALKS AND PARKWAYS TO BE PVC (SCHEDULE #40) AND UNDER PAVEMENTS TO BE PVC (SCHEDULE #80).
- FOR STANDARD CODE SEE DRAWING #826.
- CONTRACTOR SHALL NOTE THAT OPTICAL SPLICES AND ENCLOSURE, OPTICAL TERMINATIONS, PIGTAILS, PATCHCORDS, MULTIMODE TO SINGLE MODE CONVERTORS, FIBER PATCH PANEL, AND HARDWARE AND SOFTWARE REQUIRED FOR A FULLY OPERATIONAL SYSTEM AS WELL AS A FUTURE CONNECTION TO A CLOSED LOOP SYSTEM, ARE PAID FOR AS PART OF "CABINET WORK, SPLICING, TESTING AND MISC." ITEM.

- ROD AND CLEAN DUCT IN EXISTING CONDUIT SYSTEM (1022').
- REPAIR AND REPLACE DAMAGED CONDUIT (100').
- DRILL EXISTING MANHOLE OR HANDHOLE (37 EACH).
- CLEAN EXISTING MANHOLE OR HANDHOLE (10 EACH).
- PAINT EXISTING POLE, POST, OR CONTROLLER COMPLETE (17 EACH).
- RACKING CABLES IN MANHOLE OR HANDHOLE (11 EACH).
- SPECIAL EXCAVATION AND REPLACEMENT FOR CONDUIT UNDER CTA TRACK (ITEM=90')
- INTERCEPT EXISTING CONDUIT (3 EACH)
- ADDITIONAL JUNCTION BOX ON A POLE WITH DETECTION CAMERA (2 EACH)
- SYSTEM CAMERA DETECTION (2 EACH)
- R - REPAIR EXISTING MANHOLE (1 EACH)

NOTE 1: THE EXISTING HANDHOLES SHOWN ON THE BRIDGE COULD NOT BE VERIFIED IN THE FIELD. THESE STRUCTURES ARE EXCLUDED FROM THE CLEANING AND RACKING ITEMS.

DATE	REVISION
TRAFFIC CONTROL SIGNALS WELLS ST - WENTWORTH AVE LASALLE ST - WENTWORTH AVE AT 47TH STREET	
CONDUIT AND FOUNDATION PLAN	
CITY OF CHICAGO DEPT. OF STREETS AND SANITATION BUREAU OF ELECTRICAL ENGINEERING DIVISION OF ELECTRICAL ENGINEERING	
DRAFTSMAN:	CHIEF DRAFTSMAN: ENGINEER:
SUPERVISING ENGINEER: ELEC. DESIGN ENGR.	DWG. NO.
ENGINEER OF ELECTRICITY:	14418A
GEN'L SUPT. OF ELECTRICITY:	
DEPUTY COMMISSIONER:	DATE: Oct. 29, 2004
SIZE: 22" X 36"	SCALE: AS NOTED

REVISIONS	
NAME	DATE

ILLINOIS DEPARTMENT OF TRANSPORTATION
F.A.I. 90/94 (DAN RYAN EXPRESSWAY)
TRAFFIC SIGNALS AT 47TH STREET WITH
WENTWORTH AVENUE - LASALLE STREET AND
WELLS STREET - WENTWORTH AVENUE
**TRAFFIC CONTROL SIGNALS
CONDUIT AND FOUNDATION PLAN**

SCALE: AS SHOWN
DATE: October 29, 2004

DRAWN BY: MRK/NJH
CHECKED BY: MS

CTE ENGINEERS
CONSOER TOWNSEND ENVIRONMENTAL ENGINEERS, INC.
303 EAST WACKER DRIVE, SUITE 600
CHICAGO, ILLINOIS 60601-5202, PHONE: (312) 938-0300

11/30/2004 11:45:27 AM