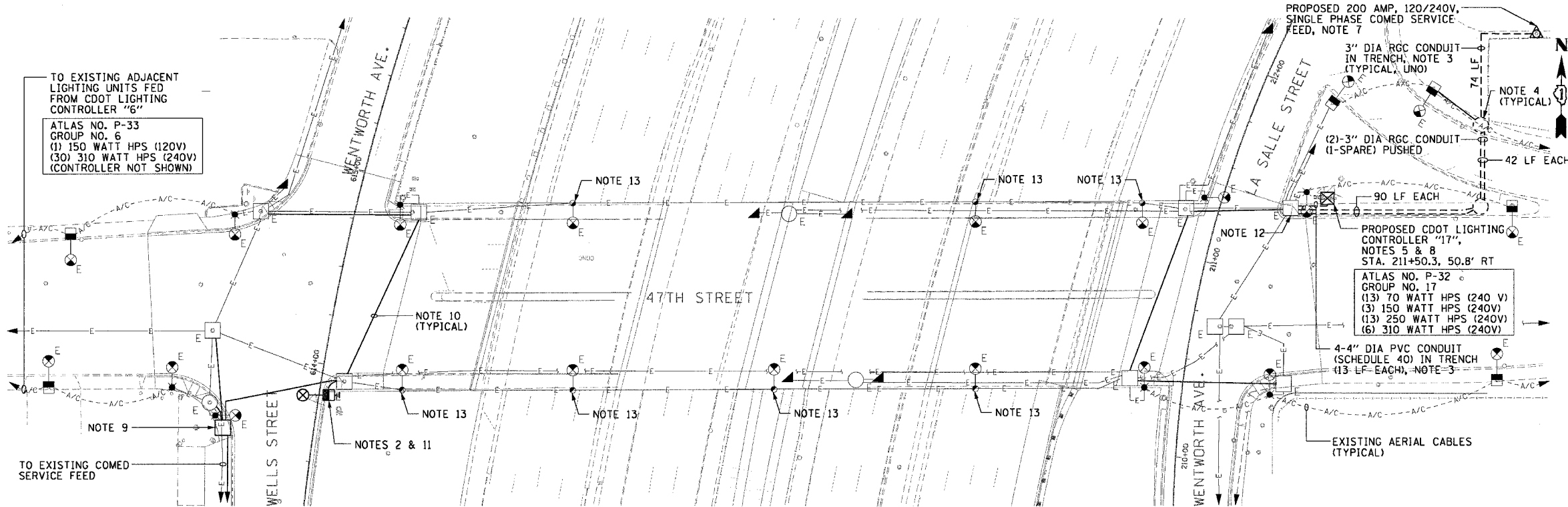
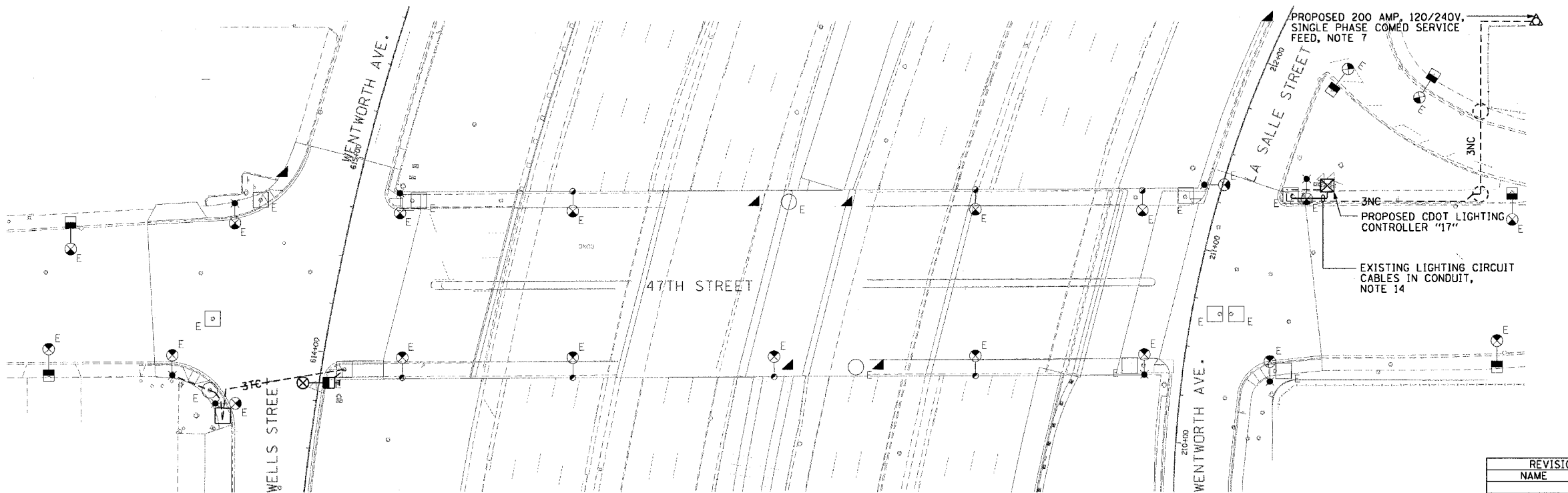


F.A.I. RT.:	SECTION	COUNTY	TOTAL SHEETS	SHEET NO.
90/94	2004-065TS	COOK	62	27
STA.	TO STA.			
FED. ROAD DIST. NO. 1 ILLINOIS FED. AID PROJECT				
62804				



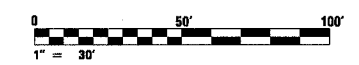
**PROPOSED IMPROVEMENTS**  
(NOTE 6)



**WIRING PLAN**  
(NOTE 6)

**NOTES:**

- SEE DRAWINGS E-1 AND E-2 FOR CDOT ELECTRICAL GENERAL NOTES, SYMBOLS, AND ABBREVIATIONS.
- SEE DRAWING BOE-24 FOR BOE LIGHTING MAST ARM DETAILS.
- SEE DRAWING BOE-2 FOR BOE CONDUIT IN TRENCH DETAIL.
- SEE DRAWING BOE-26 FOR BOE 30" DIA. CONCRETE HANDHOLE DETAILS.
- SEE DRAWING BOE-30 FOR 200 AMP BASE MOUNTED STREET LIGHTING CONTROLLER DETAILS.
- COORDINATE ALL ELECTRICAL WORK WITH CIVIL WORK, TRAFFIC SIGNAL WORK, SUGGESTED STAGES OF CONSTRUCTION, TRAFFIC CONTROL PLANS, AND IDOT CONTRACT NOS. 62586 AND 62807.
- PROVIDE A NEW 120/240 VOLT, 200 AMPERE, SINGLE PHASE COMED SERVICE FEED FOR PROPOSED CDOT LIGHTING CONTROLLER. SEE DRAWING BOE-42 FOR COMED SERVICE DETAILS.
- PROVIDE A NEW 200 AMP, 1 PHASE, 120/240 VOLT STREET LIGHTING CONTROLLER AND CONCRETE FOUNDATION. PROVIDE 1-200 AMP, 2 POLE MAIN CIRCUIT BREAKER; 5-50 AMP (2-SPARE), 2 POLE CIRCUIT BREAKERS; 1-70 AMP, 1-POLE CIRCUIT BREAKER FOR TRAFFIC SIGNAL CONTROLLER. PROVIDE ALL NECESSARY MATERIALS AND LABOR TO CONNECT THE NEW AND EXISTING SECONDARY BRANCH CIRCUITS TO THE NEW CONTROLLER. INSTALL THE STREET LIGHTING CONTROLLER AS SHOWN ON THE BOE STANDARD DRAWINGS AND AS DIRECTED BY THE ENGINEER.
- PROPOSED MANHOLE WILL BE MEASURED OR COUNTED FOR PAYMENT UNDER THE APPROPRIATE TRAFFIC SIGNAL PAY ITEM. REFER TO THE TRAFFIC SIGNAL PLANS.
- PROPOSED CONDUIT RUN WILL BE MEASURED OR COUNTED FOR PAYMENT UNDER THE APPROPRIATE TRAFFIC SIGNAL PAY ITEM. REFER TO THE TRAFFIC SIGNAL PLANS TYPE AND LENGTH OF CONDUIT RUNS.
- PROPOSED COMBINATION TRAFFIC SIGNAL/LIGHTING UNIT. MAST ARM AND LUMINAIRE WILL BE COUNTED FOR PAYMENT ON THIS DRAWING UNDER THE APPROPRIATE LIGHTING PAY ITEMS. THE POLE AND FOUNDATION WILL BE COUNTED FOR PAYMENT ON THE TRAFFIC SIGNAL PLANS UNDER THE APPROPRIATE TRAFFIC SIGNAL PAY ITEMS. SEE THE TRAFFIC SIGNAL PLANS FOR DETAILS.
- ROUTE PROPOSED CONDUIT RUNS TO THE EXISTING MANHOLE OR HANDHOLE AS SHOWN. DRILL EXISTING MANHOLE OR HANDHOLE AND INSTALL PROPOSED CONDUIT THROUGH THE MANHOLE OR HANDHOLE WALL. SEE DRAWING BOE-13 FOR DETAILS.
- PAINT EXISTING LIGHT POLE, MAST ARM, AND LUMINAIRE (7 TOTAL) TO MATCH NEW.
- PULL EXISTING LIGHTING CIRCUIT CABLES COILED IN EXISTING MANHOLE THROUGH PROPOSED CONDUIT TO THE PROPOSED LIGHTING CONTROLLER. CONNECT EXISTING LIGHTING CIRCUITS TO NEW CIRCUIT BREAKERS. SEE DRAWING BOE-25 FOR CONTROLLER WIRING DIAGRAM.



E-12

REVISIONS	
NAME	DATE

ILLINOIS DEPARTMENT OF TRANSPORTATION  
F.A.I. 90/94 (DAN RYAN EXPRESSWAY)  
TRAFFIC SIGNALS AT 47TH STREET WITH  
WENTWORTH AVENUE - LASALLE STREET AND  
WELLS STREET - WENTWORTH AVENUE  
**47TH STREET BRIDGE  
ROADWAY LIGHTING IMPROVEMENTS**

SCALE: 1"=30'      DRAWN BY: HAR  
DATE: October 29, 2004      CHECKED BY: WDS

**CTE ENGINEERS**  
CONSER TOWNSEND ENVIRONMENTAL ENGINEERS, INC.  
303 EAST WACKER DRIVE, SUITE 600  
CHICAGO, ILLINOIS 60601-5202, PHONE: (312) 938-0300

10/27/2004 11:43:32 AM