

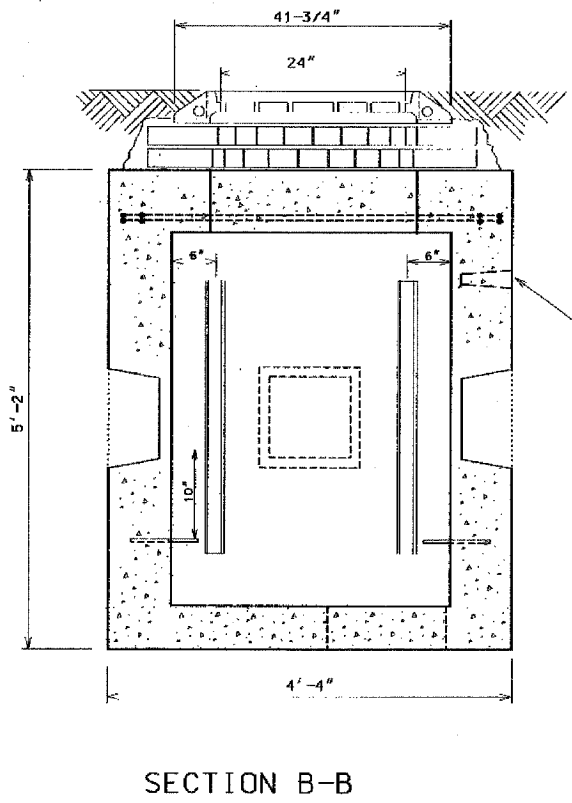
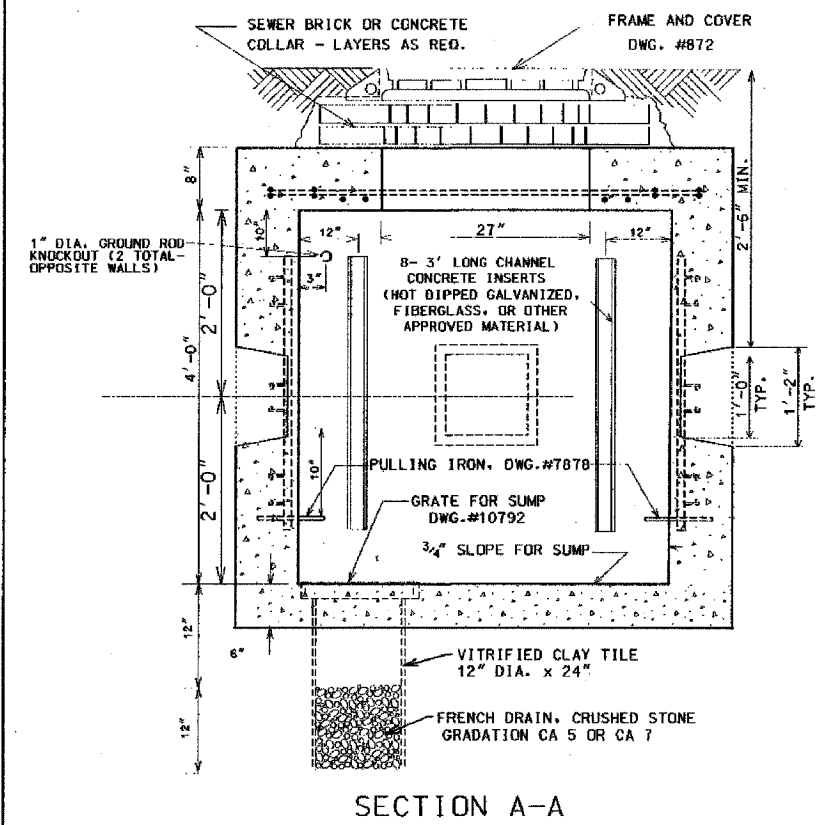
EXCAVATION (CONSTRUCTION INFORMATION)	
COMPLETE MANHOLE	6.0 CU. YDS.
NEW ROOF ONLY	2.0 CU. YDS.
SHEETING MANHOLE	150.0 SQ. FT.

#5 REINFORCING BARS			
BAR	LENGTH	NO. OF BARS	TOTAL FT.
A	3'-4"	4	13'-4"
B	4'-0"	10	40'-0"

MATERIALS FOR ROOF ONLY	
CONCRETE	0.45 CU. YDS.
REINFORCING BARS #5	54'

DRG.	MATERIAL	CODE	SIZE	NO. (REQ)
	FORM FOR MANHOLE	11-6674-6000 11-6648-5320	3x4x4	1
	CONDUIT END BELL		AS REQ.	
	TILE, SEWER	39-4038-3200	12"x24"	1
	SLAB BOLSTER		2"	20'
	BAR, REINFORCING	20-5472-9650	5/8" # 54	
	TIE WIRE	13-8938-6106	#20GA	35'
7878	PULLING IRON	02-4483-8970	3/4" # 2	
	CONCRETE	05-3267-2940	3 CU. YDS	
	SEWER BRICK	05-1452-9720	STD.	50
10792	GRATE FOR SUMP	02-4368-7100	15" # 1	
	GROUND ROD	09-7796-9200	3/4"x10'	1
	GROUND ROD CLAMP	09-2636-3240	3/4"	1
	CRUSHED STONE	05-9057-5471	3/4" # 70	
872	MANHOLE FRAME	02-4299-5524	24"	1
872	MANHOLE COVER	02-4574-5040	24"	1
	CONC. CHANNEL INSERT	02-4574-5040	3'	8

- NOTES:
1. PRECAST MANHOLES MUST BE PROVIDED WITH CHANNEL INSERTS, PULLING IRONS, AND CONDUIT KNOCK-OUTS.
  2. ALL CONCRETE MUST BE PORTLAND CEMENT CONCRETE MEETING (DOT REQUIREMENTS FOR CLASS PC CONCRETE FOR PRE-CAST STRUCTURES, OR CLASS S1 CONCRETE FOR CAST-IN-PLACE STRUCTURES.
  3. REINFORCING BARS MUST MEET ASTM A615 GRADE 60.



8/21/02	SUPERCEDES DWG. 730 DATED JAN 12, 1996
1/12/96	SUPERCEDES DWG. 730 DATED NOV. 21, 1973
DATE	REVISION
<b>3' x 4' x 4'</b>	
<b>CONCRETE MANHOLE</b>	
<b>WITH 24" FRAME AND COVER</b>	
CITY OF CHICAGO DEPT. OF STREETS AND SANITATION BUREAU OF ELECTRICITY DIVISION OF ELECTRICAL ENGINEERING	
DRAFTSMAN B. GARNSEY	CHIEF DRAFTSMAN R. CARTER
ENGINEER B. GARNSEY	ENGINEER B. GARNSEY
ENGINEER IN CHARGE B. GARNSEY	GENERAL SUPERINTENDENT B. GARNSEY
DEPUTY SUPERINTENDENT B. GARNSEY	DRAWING NO. <b>730</b>
SIZES 17" x 22"	SCALE NONE
	DATE 8/21/02

REVISIONS	
NAME	DATE