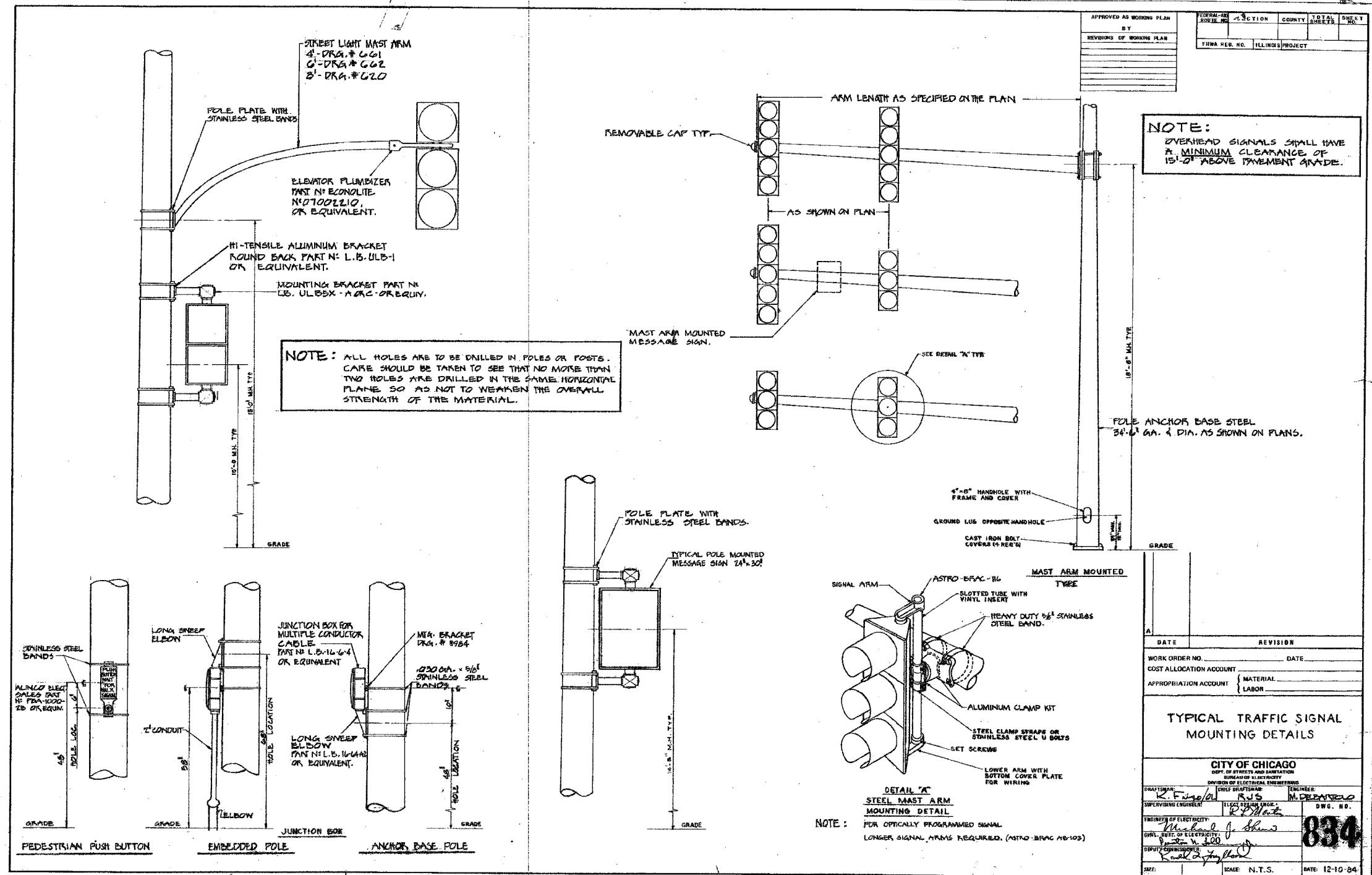


F.A.I. RTE.	SECTION	COUNTY	TOTAL SHEETS	SHEET NO.
90/94	2004-065TS	COOK	62	43
STA.		TO STA.		
FED. ROAD DIST. NO. 1		ILLINOIS FED. AID PROJECT		
62804				



NOTE:
 OVERHEAD SIGNALS SHALL HAVE A MINIMUM CLEARANCE OF 15'-0" ABOVE PAVEMENT GRADE.

NOTE: ALL HOLES ARE TO BE DRILLED IN POLES OR POSTS. CARE SHOULD BE TAKEN TO SEE THAT NO MORE THAN TWO HOLES ARE DRILLED IN THE SAME HORIZONTAL PLANE SO AS NOT TO WEAKEN THE OVERALL STRENGTH OF THE MATERIAL.

NOTE: FOR OPTICALLY PROGRAMMED SIGNAL LONGER SIGNAL ARMS REQUIRED. (ASTRO-BRAC #B103)

APPROVED AS WORKING PLAN	FEDERAL-AID ROUTE NO.	SECTION	COUNTY	TOTAL SHEETS	SHEET NO.
BY	THWA. RES. NO.	ILLINOIS PROJECT			

DATE	REVISION
WORK ORDER NO.	DATE
COST ALLOCATION ACCOUNT	
APPROPRIATION ACCOUNT	MATERIAL
	LABOR
TYPICAL TRAFFIC SIGNAL MOUNTING DETAILS	
CITY OF CHICAGO DEPT. OF STREETS AND SANITATION BUREAU OF ELECTRICITY DIVISION OF ELECTRICAL ENGINEERING	
DRAWN BY: <i>K. F. ...</i>	ENGINEER: <i>M. ...</i>
CHECKED BY: <i>R. ...</i>	DWG. NO. 834
DATE: 12-10-04	SCALE: N.T.S.

REVISIONS	
NAME	DATE

m:\p\041658\elec\14\cont\19\ast\cont\19\04\065050222a.dwg 08/56:13 AM 10/27/2004