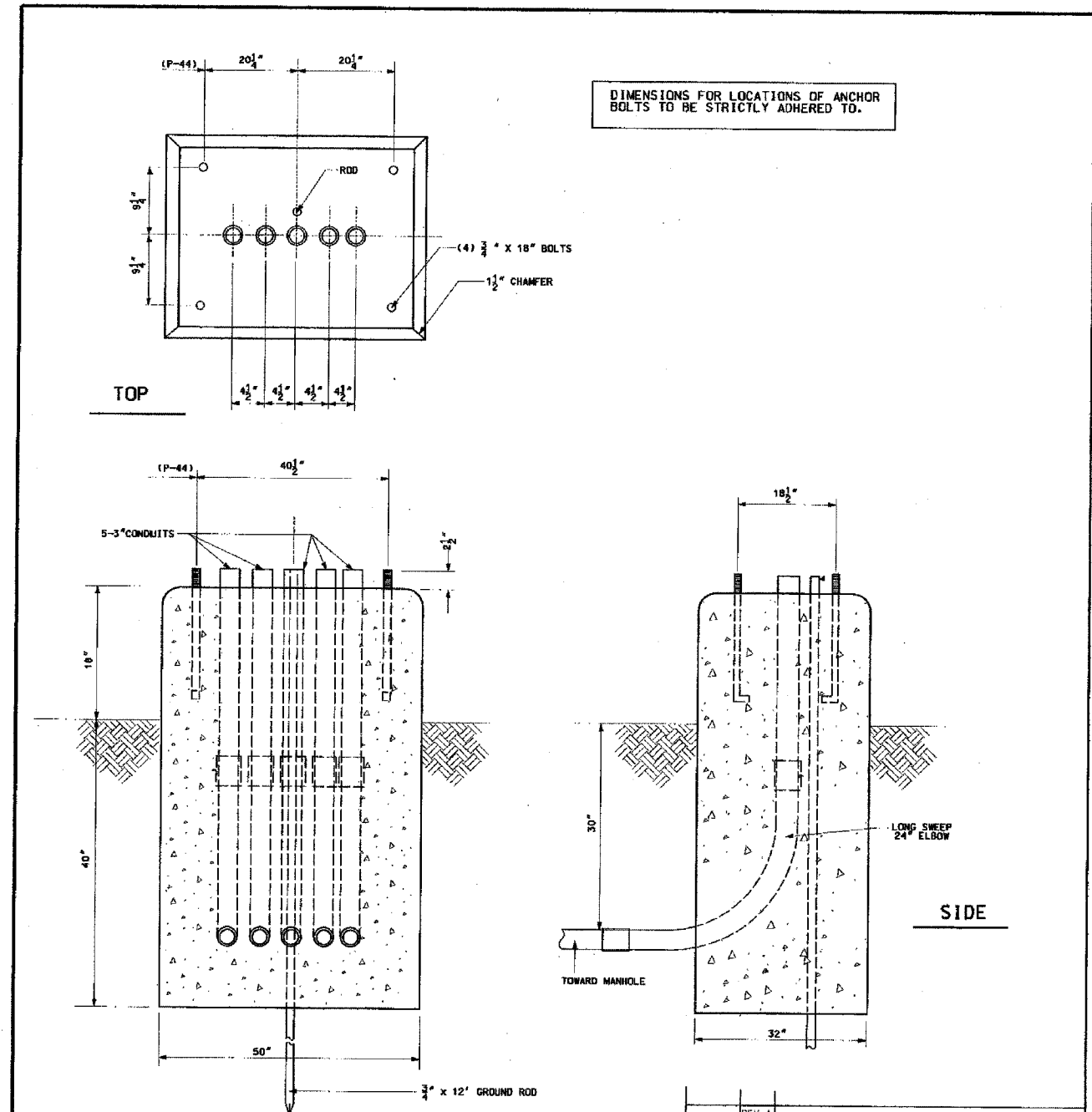


F.A.I. RTE.	SECTION	COUNTY	TOTAL SHEETS	SHEET NO.
90/94	2004-065TS	COOK	62	53
STA.	TO STA.			
FED. ROAD DIST. NO. 1	ILLINOIS	FED. AID PROJECT		

62804



DIMENSIONS FOR LOCATIONS OF ANCHOR BOLTS TO BE STRICTLY ADHERED TO.

REV. A  
 SUPERSEDES DWG. # 888 DATED 6-23-1993

### TYPE "P" FOUNDATION

FOR BASE MOUNTED  
 TRAFFIC SIGNAL CONTROL CABINET

CITY OF CHICAGO  
 DEPT. OF STREETS AND SANITATION  
 BUREAU OF ELECTRICAL ENGINEERING

DRAFTSMAN: D. LETAMENDI	CHIEF DRAFTSMAN: R. CARTER	ENGINEER: D. LETAMENDI
SUPERVISING ENGINEER: ELEC. DESIGN ENGR.		
ENGINEER OF ELECTRICITY: GEN'L. SUPV. OF ELECTRICITY:		DWG. NO. <b>888</b>
DEPUTY COMMISSIONER:		DATE: 6-19-02

SIZE: 16" x 21" SCALE: NONE

REVISIONS	
NAME	DATE

BOE-32

ILLINOIS DEPARTMENT OF TRANSPORTATION  
 F.A.I. 90/94 (DAN RYAN EXPRESSWAY)  
 TRAFFIC SIGNALS AT 47TH STREET WITH  
 WENTWORTH AVENUE - LASALLE STREET AND  
 WELLS STREET - WENTWORTH AVENUE

BOE STANDARD DETAILS

SCALE: NOT TO SCALE DRAWN BY: HAR  
 DATE: October 29, 2004 CHECKED BY: WDS

m:\p\0468\elec\N4-ctrl\9-ctrl\constr\9810\000950103\22a.dwg 10/27/2004 08:56:24 AM