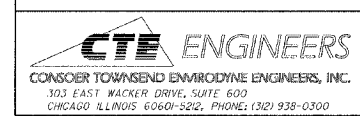
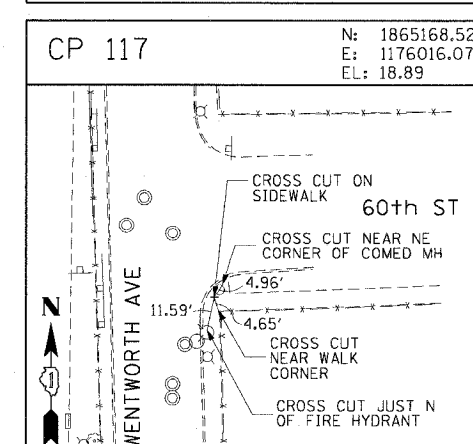
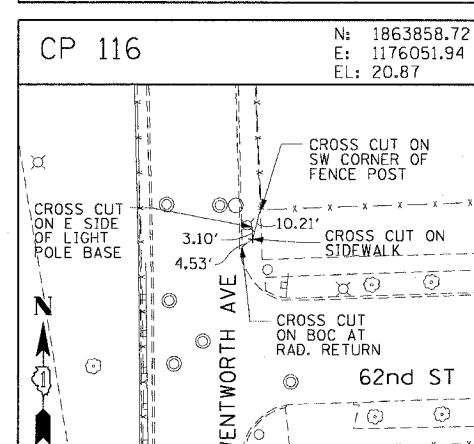
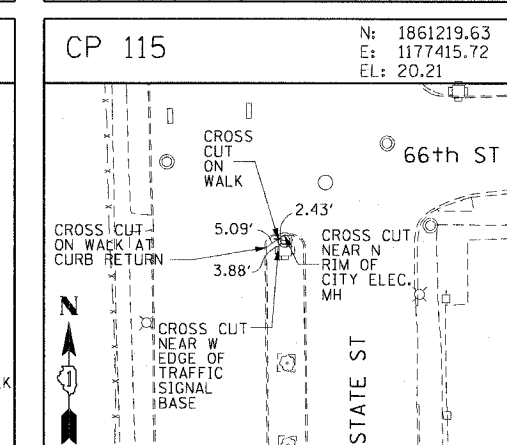
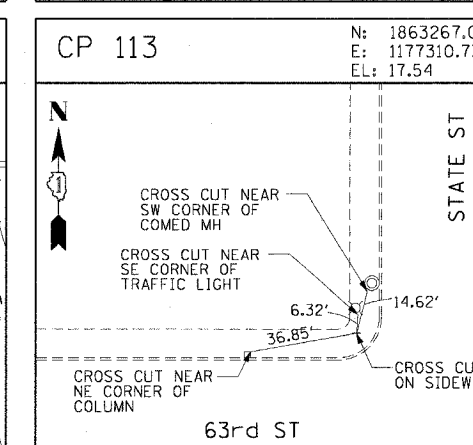
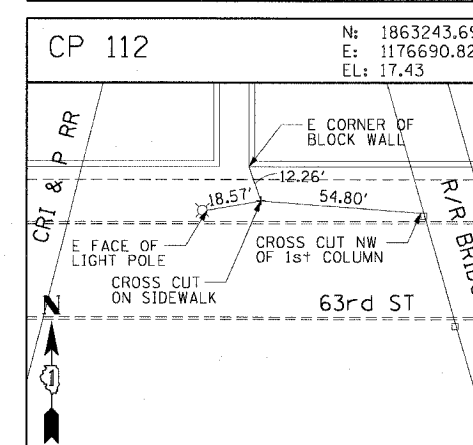
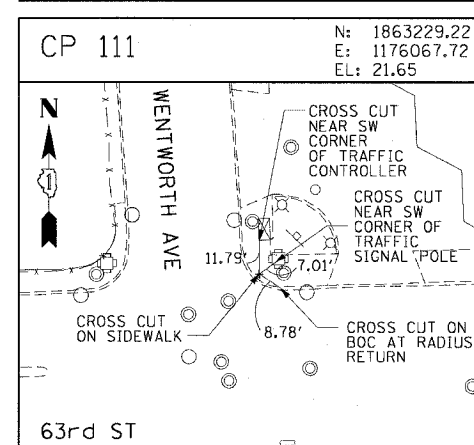
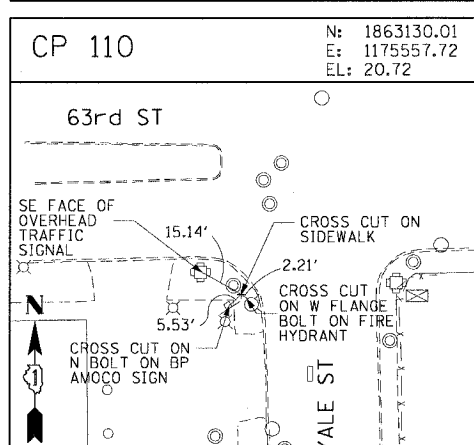
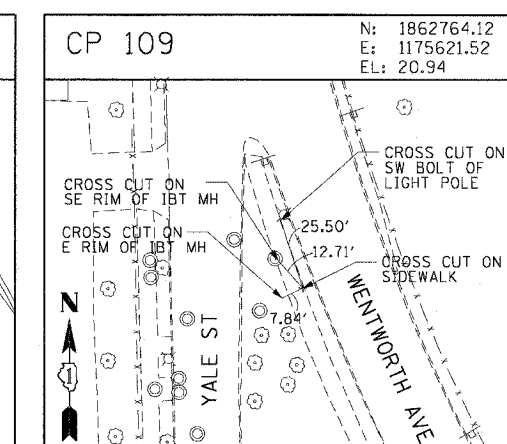
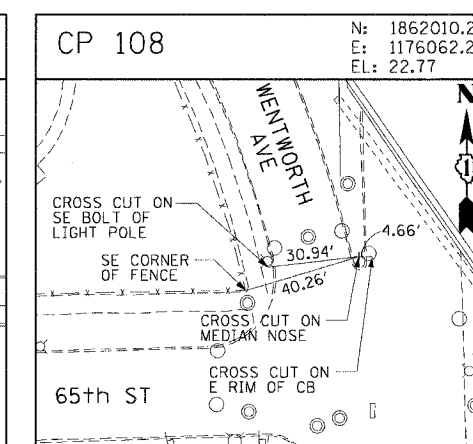
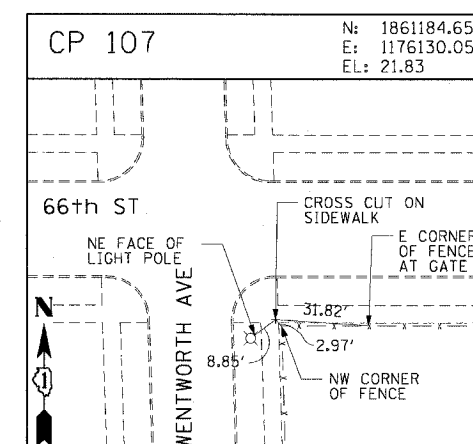
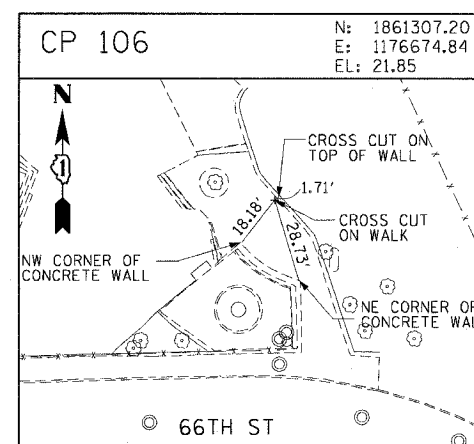
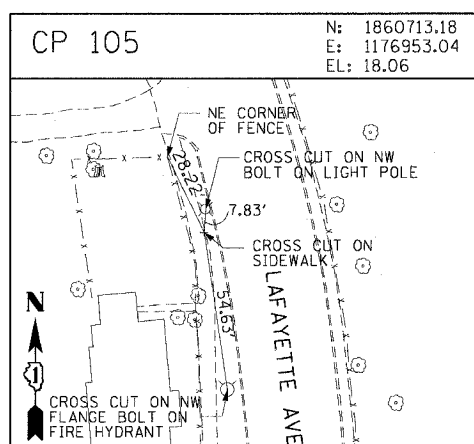
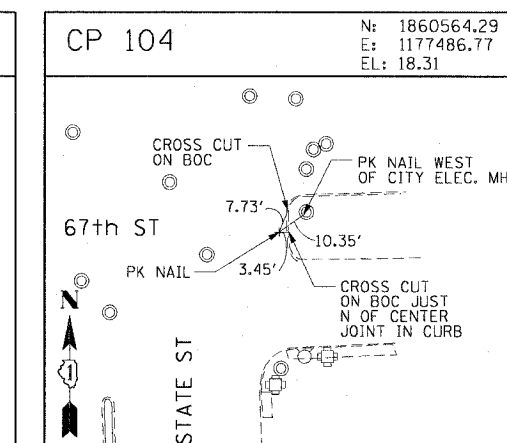
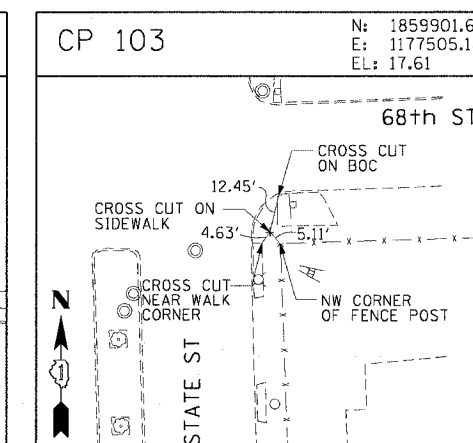
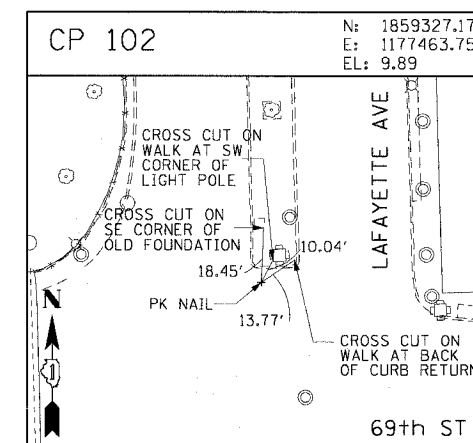
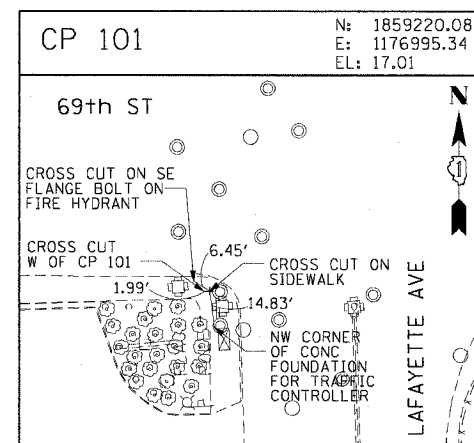
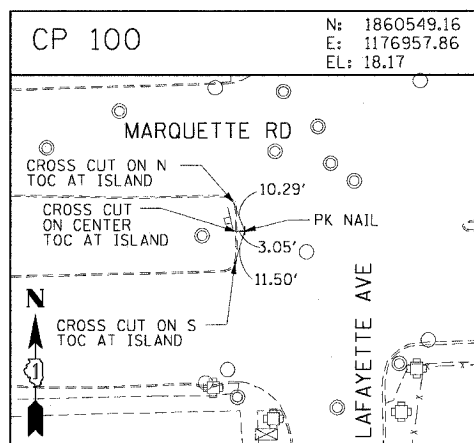


F.A.I. RTE.	SECTION	COUNTY	TOTAL SHEETS	SHEET NO.
90/94	2004-095 SG	COOK	30	13
STA.	TO STA.			
FED. ROAD DIST. NO. 1	ILLINOIS	FED. AID PROJECT	62836	



REVISIONS	
NAME	DATE

ILLINOIS DEPARTMENT OF TRANSPORTATION
F.A.I. 90/94 (DAN RYAN EXPRESSWAY)
63rd ST TO 59th ST (FRONTAGE ROAD SIGNING)

SURVEY TIES AND CONTROL POINTS

SCALE: 1"=30'
DATE: NOVEMBER 5, 2004

DRAWN BY: MRK
CHECKED BY: JAL

11/02/2004 03:45:49 PM