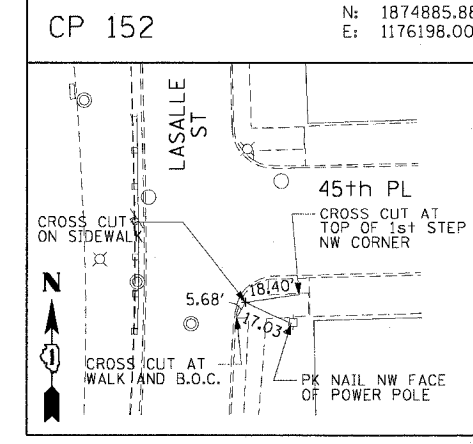
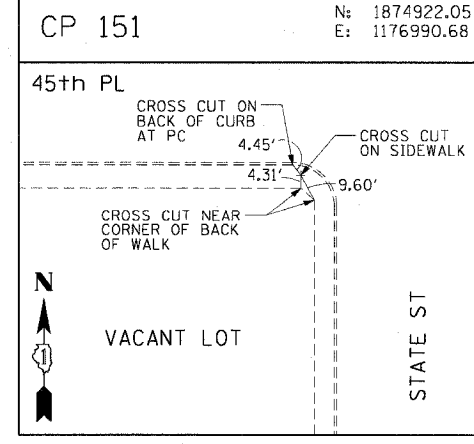
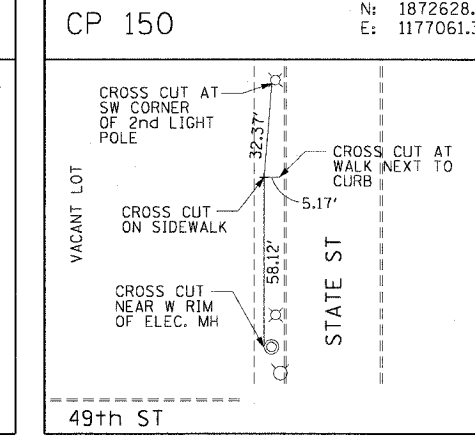
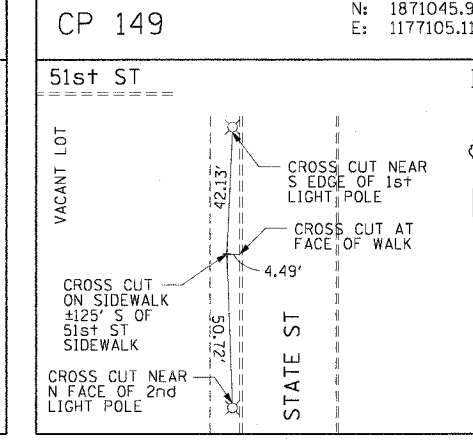
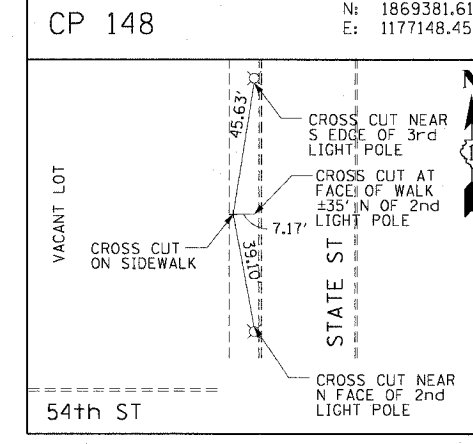
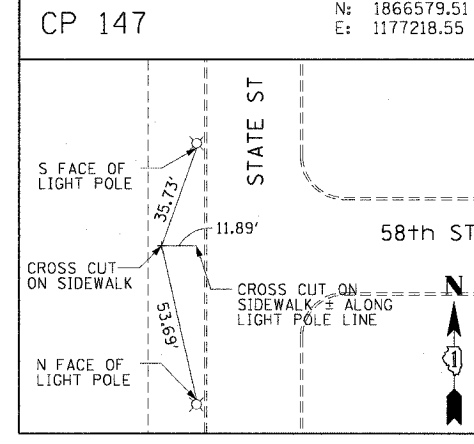
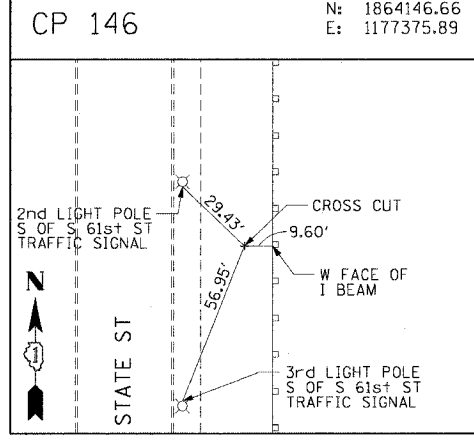
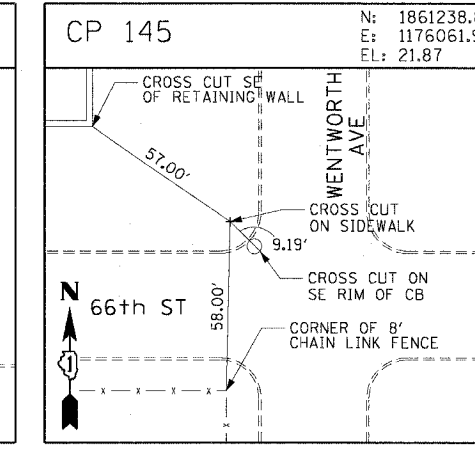
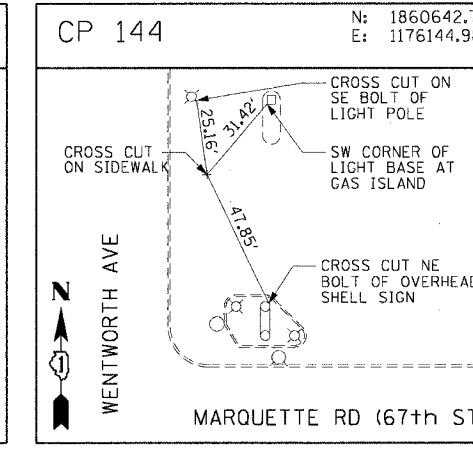
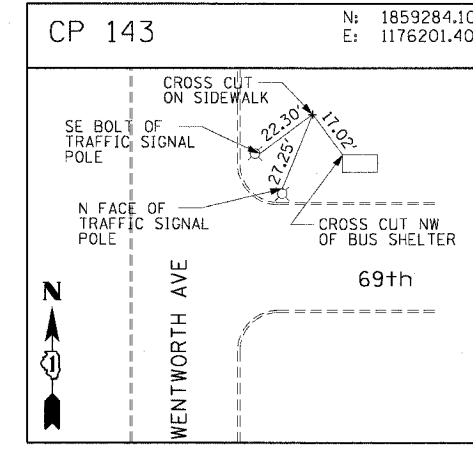
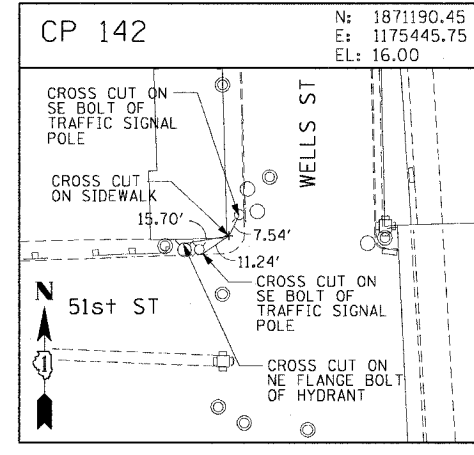
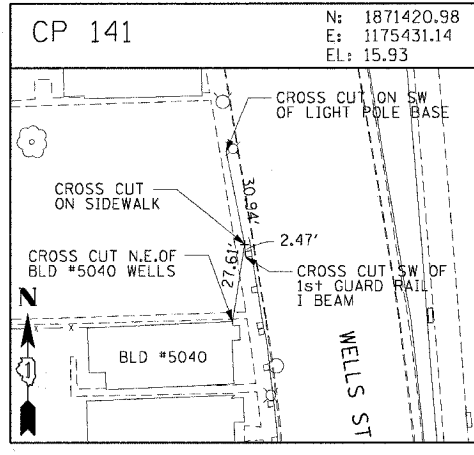
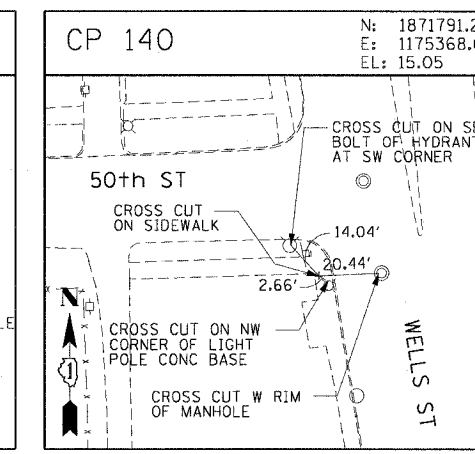
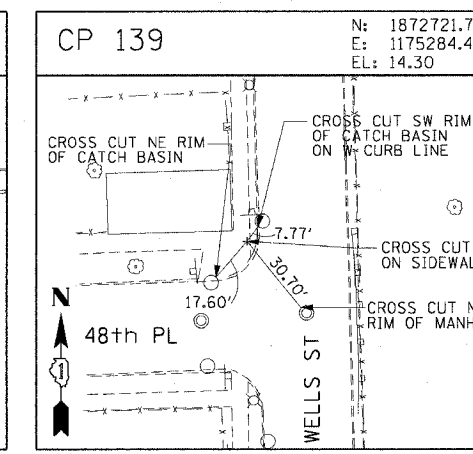
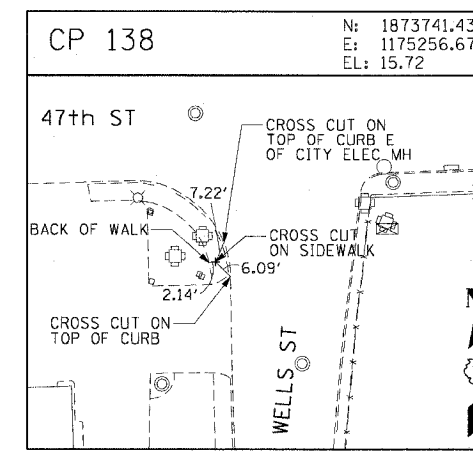
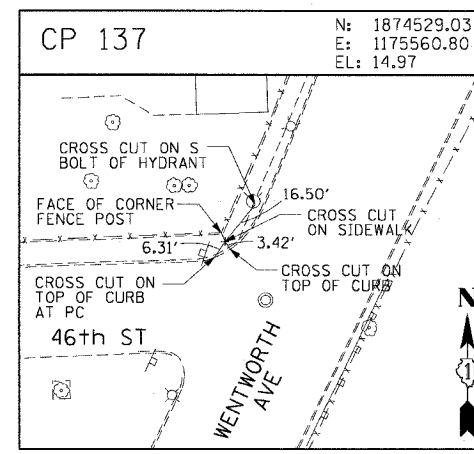
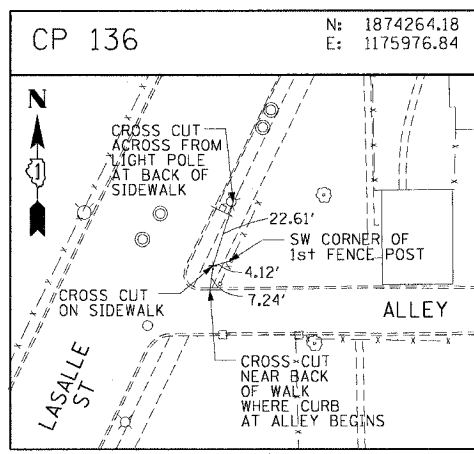


F.A.I. RTE.	SECTION	COUNTY	TOTAL SHEETS	SHEET NO.
90/94	2004-095 SG	COOK	30	15
STA.	TO STA.			
FED. ROAD DIST. NO. 1 ILLINOIS FED. AID PROJECT				
62836				



**CTE ENGINEERS**  
CONSOER TOWNSEND ENVIRONMENTAL ENGINEERS, INC.  
303 EAST WACKER DRIVE, SUITE 600  
CHICAGO, ILLINOIS 60601-5212, PHONE: (312) 938-0300

REVISIONS	
NAME	DATE

ILLINOIS DEPARTMENT OF TRANSPORTATION  
F.A.I. 90/94 (DAN RYAN EXPRESSWAY)  
63rd ST TO 59th ST (FRONTAGE ROAD SIGNING)  
**SURVEY TIES AND CONTROL POINTS**  
SCALE: 1"=30'  
DATE: NOVEMBER 5, 2004  
DRAWN BY: WRK  
CHECKED BY: JAL

11/02/2004 03:45:51 PM