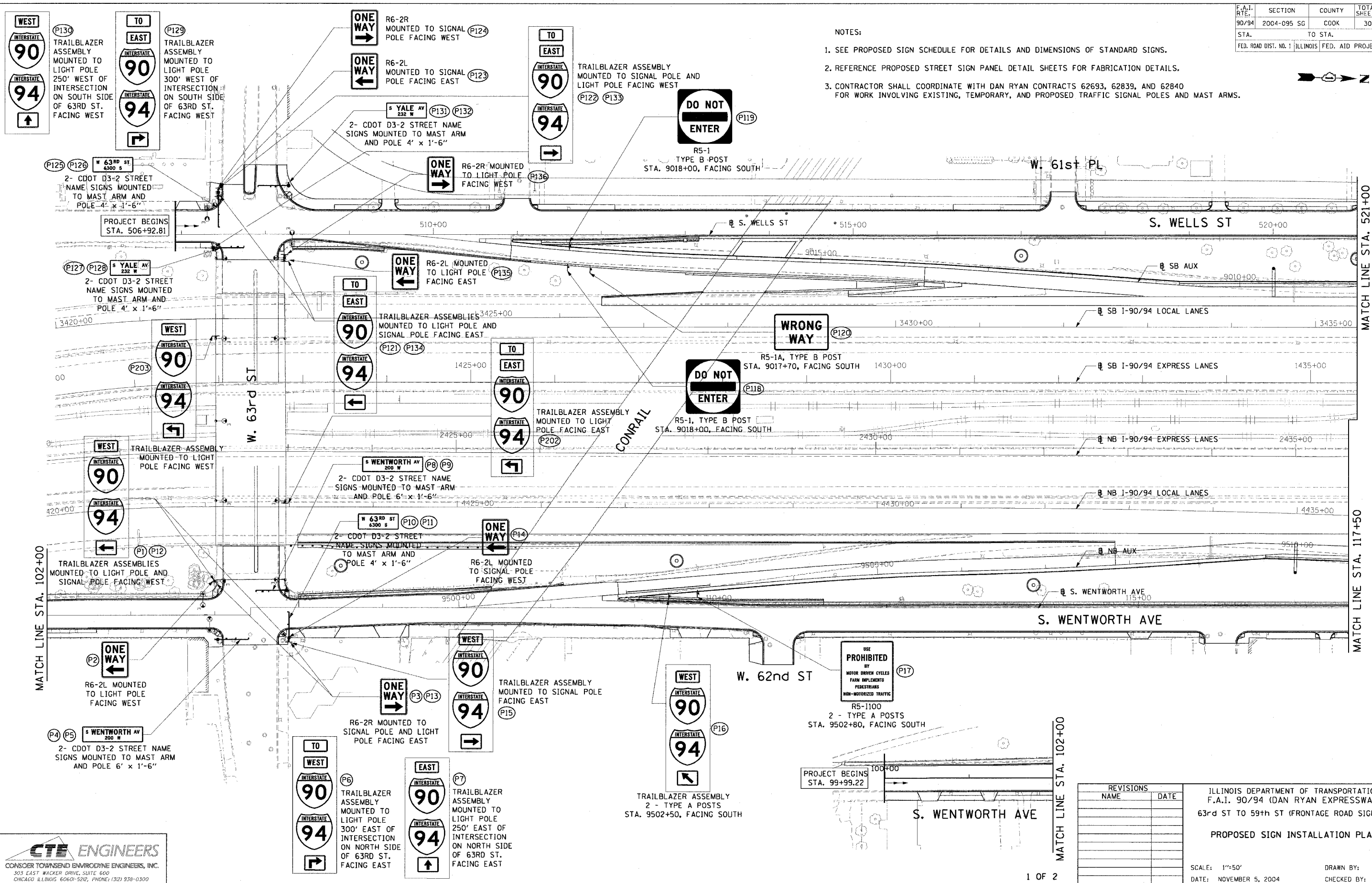


F.A.I. RTE.	SECTION	COUNTY	TOTAL SHEETS	SHEET NO.
90/94	2004-095 SG	COOK	30	25
STA.	TO STA.		62836	
FED. ROAD DIST. NO. 1	ILLINOIS	FED. AID PROJECT		

- NOTES:
- SEE PROPOSED SIGN SCHEDULE FOR DETAILS AND DIMENSIONS OF STANDARD SIGNS.
 - REFERENCE PROPOSED STREET SIGN PANEL DETAIL SHEETS FOR FABRICATION DETAILS.
 - CONTRACTOR SHALL COORDINATE WITH DAN RYAN CONTRACTS 62693, 62839, AND 62840 FOR WORK INVOLVING EXISTING, TEMPORARY, AND PROPOSED TRAFFIC SIGNAL POLES AND MAST ARMS.



CTE ENGINEERS
 CONSOER TOWNSEND ENVIRONMENTAL ENGINEERS, INC.
 303 EAST WACKER DRIVE, SUITE 600
 CHICAGO ILLINOIS 60601-5202, PHONE: (312) 938-0300

REVISIONS	
NAME	DATE

ILLINOIS DEPARTMENT OF TRANSPORTATION
 F.A.I. 90/94 (DAN RYAN EXPRESSWAY)
 63rd ST TO 59th ST (FRONTAGE ROAD SIGNING)
PROPOSED SIGN INSTALLATION PLAN

SCALE: 1"=50'
 DATE: NOVEMBER 5, 2004

DRAWN BY: SWANG
 CHECKED BY: RMC

11/02/2004 03:46:07 PM