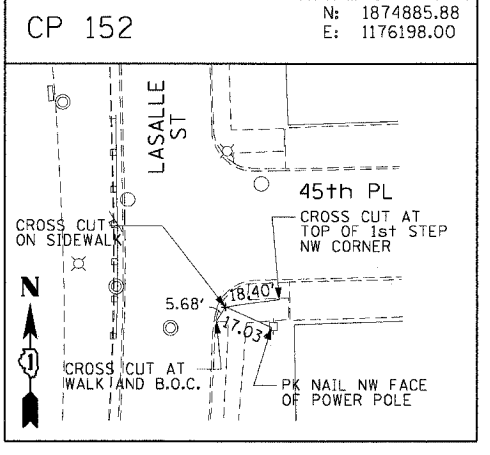
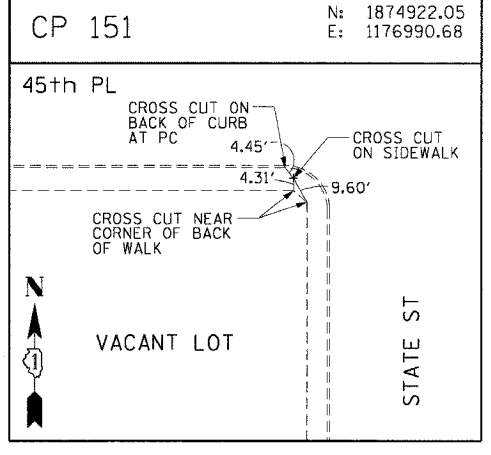
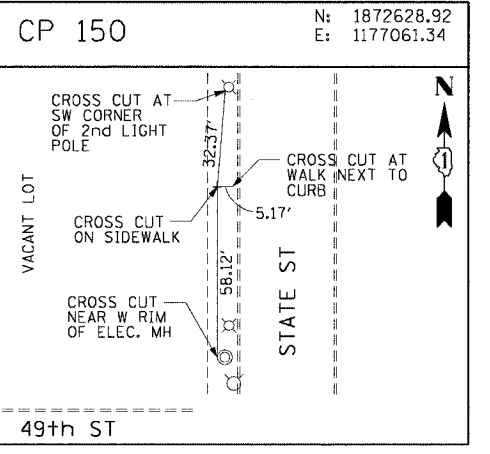
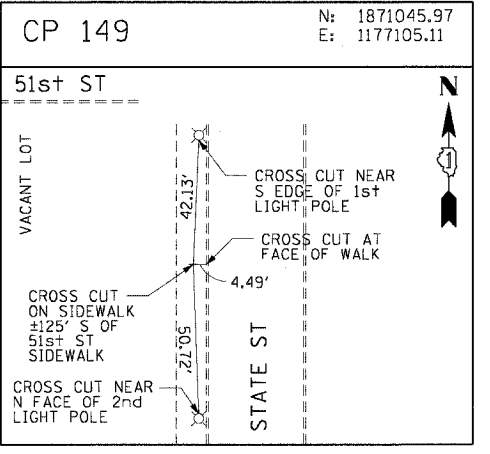
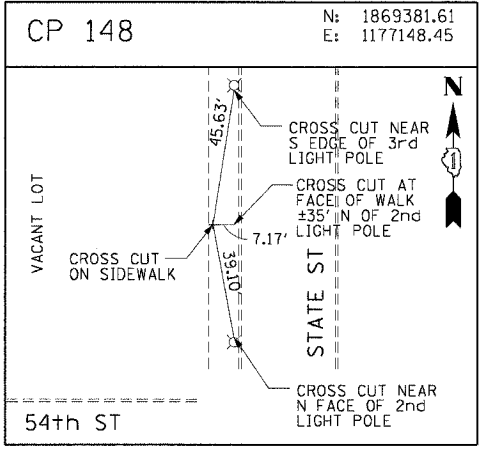
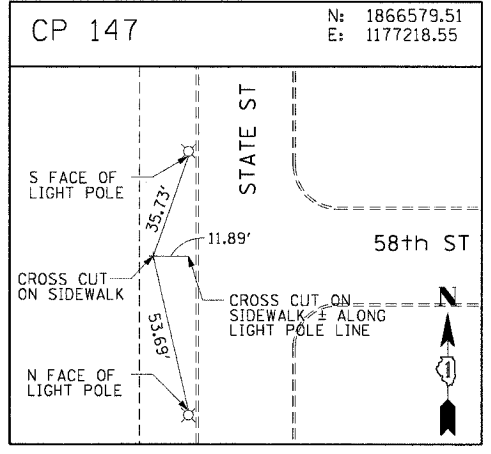
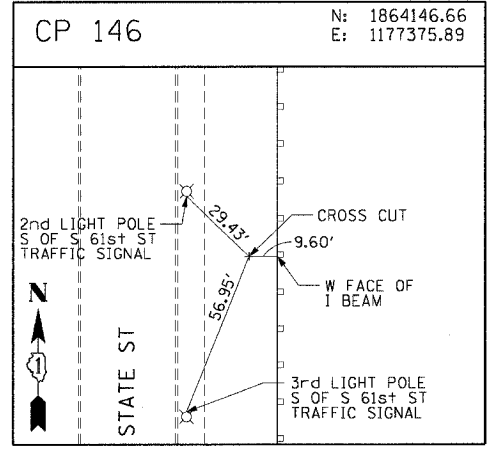
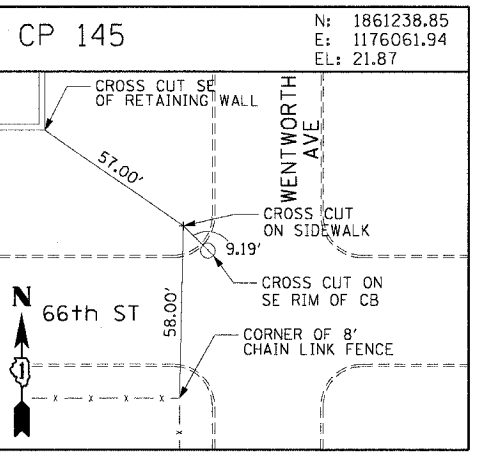
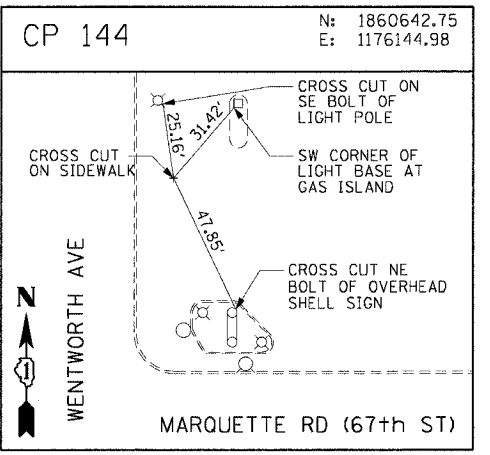
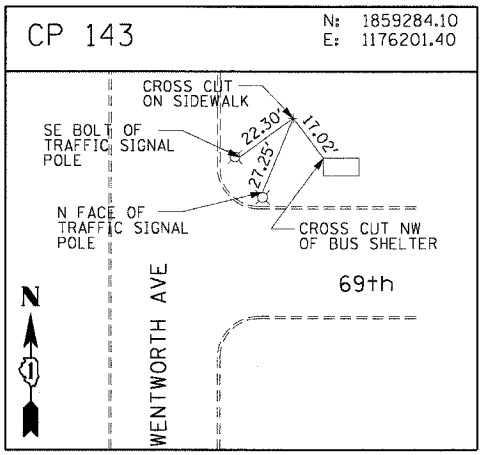
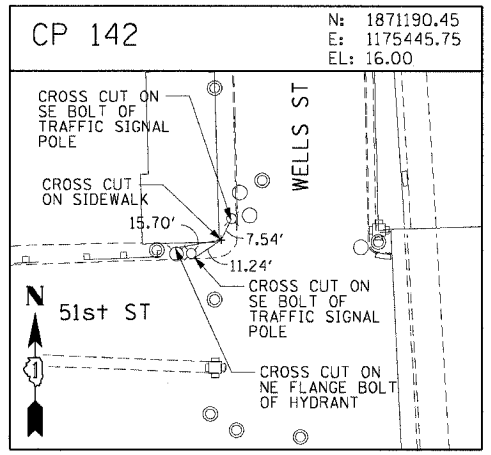
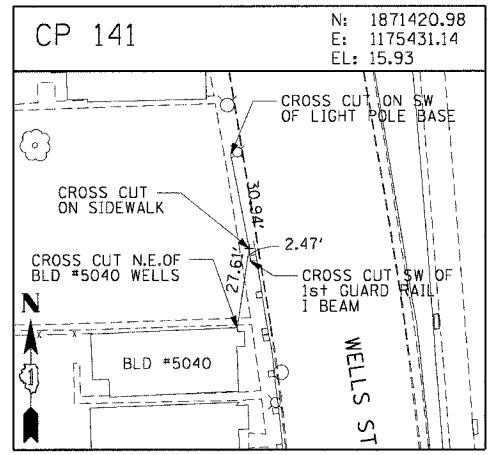
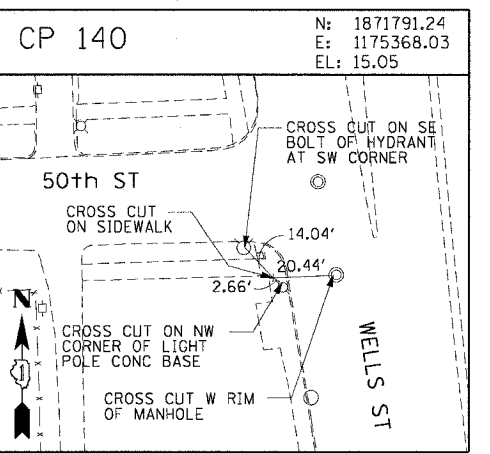
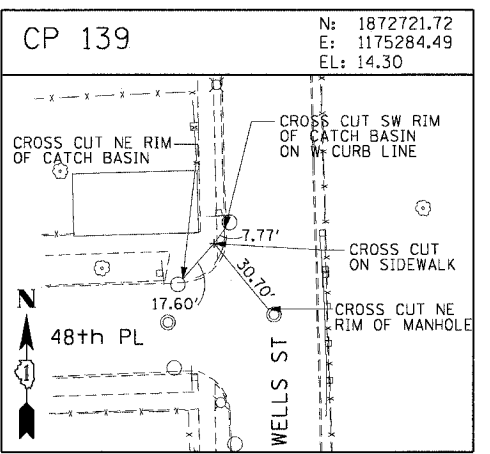
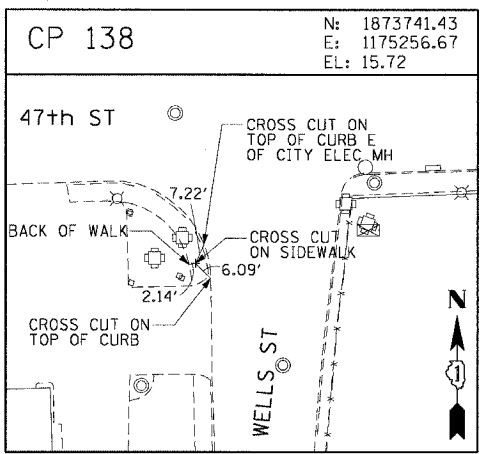
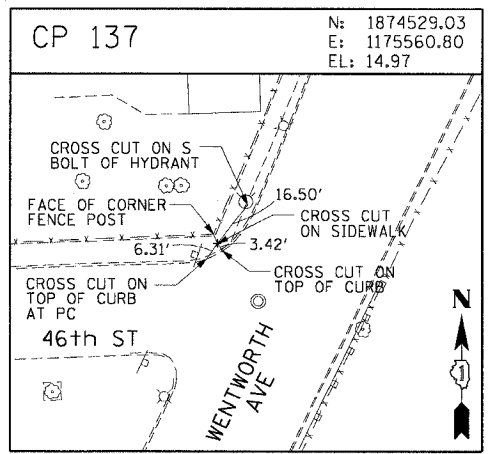
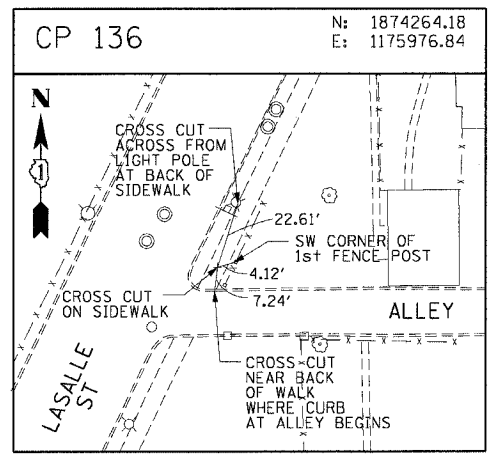


F.A.I. RTE.	SECTION	COUNTY	TOTAL SHEETS	SHEET NO.
90/94	2004-098TS	COOK	63	15
STA.	TO STA.			
FED. ROAD DIST. NO. 1 ILLINOIS FED. AID PROJECT				
62839				



CTE ENGINEERS
CONSOR TOWNSEND ENVIRONMENTAL ENGINEERS, INC.
303 EAST WACKER DRIVE, SUITE 600
CHICAGO, ILLINOIS 60601-5212, PHONE: (312) 938-0300

REVISIONS	
NAME	DATE

ILLINOIS DEPARTMENT OF TRANSPORTATION
F.A.I. 90/94 (DAN RYAN EXPRESSWAY)
TRAFFIC SIGNALS AT 59TH STREET AND
WENTWORTH AVENUE / WELLS STREET
SURVEY TIES AND CONTROL POINTS

SCALE: 1"=30'
DATE: November 12, 2004

DRAWN BY: MRK
CHECKED BY: JAL

MAP-0-663-CM-14-C-Cont-94-Add-1-CAT-9007-59-PM-AL-09032-817 02/15/13 PM