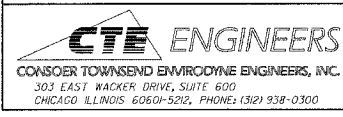
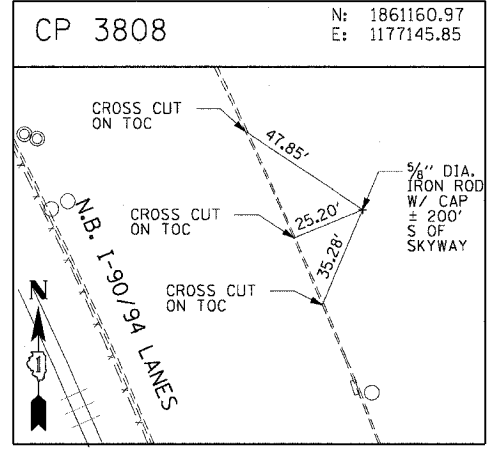
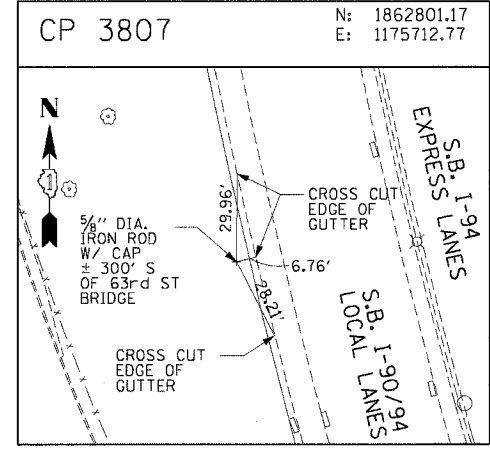
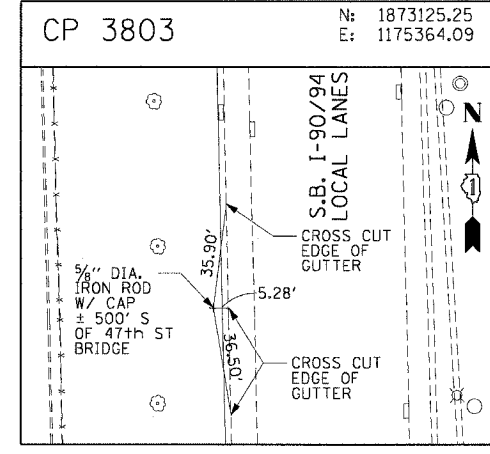
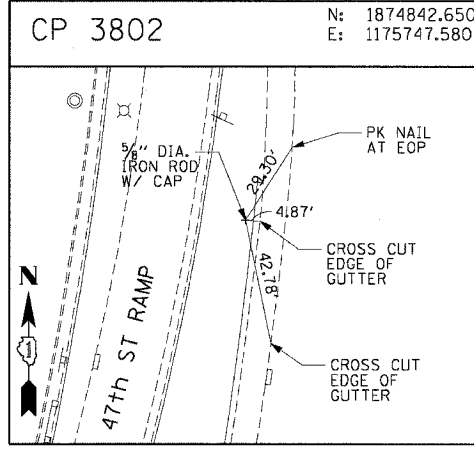
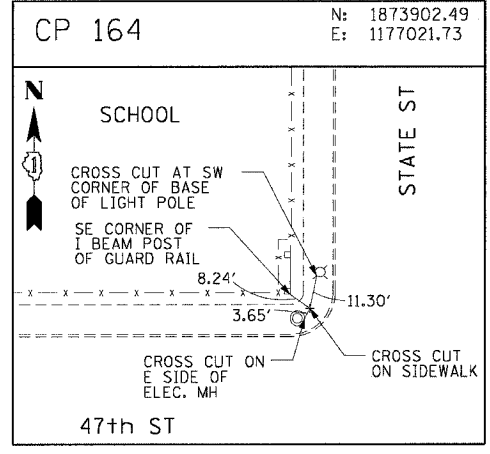
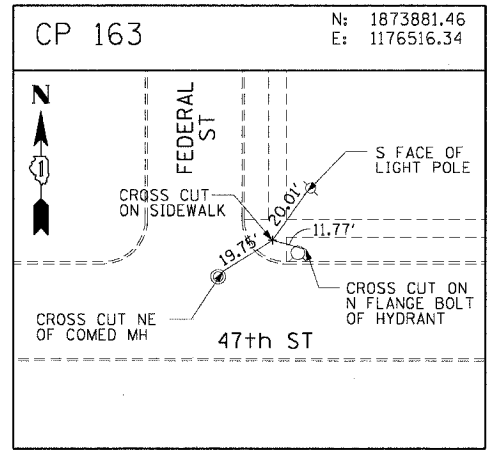
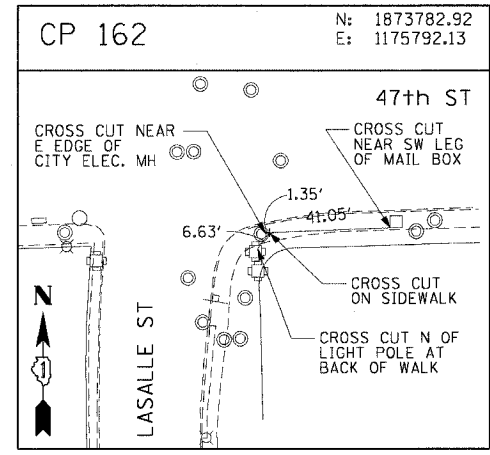
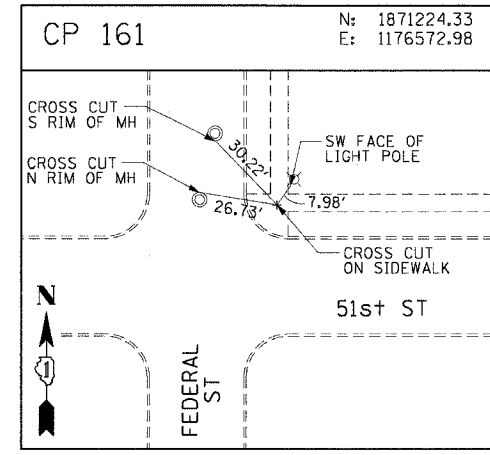
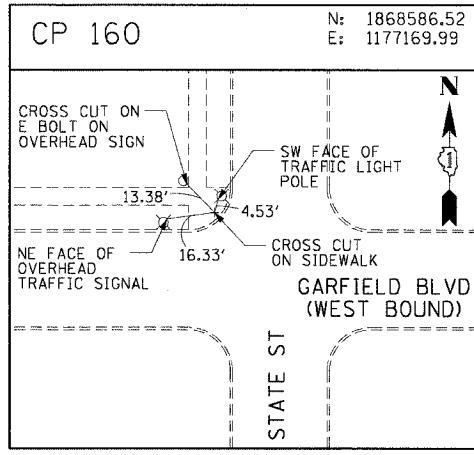
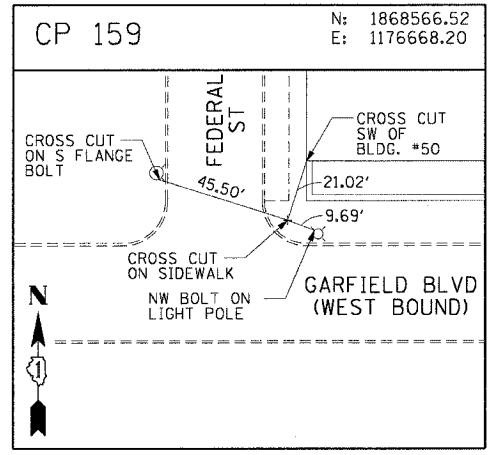
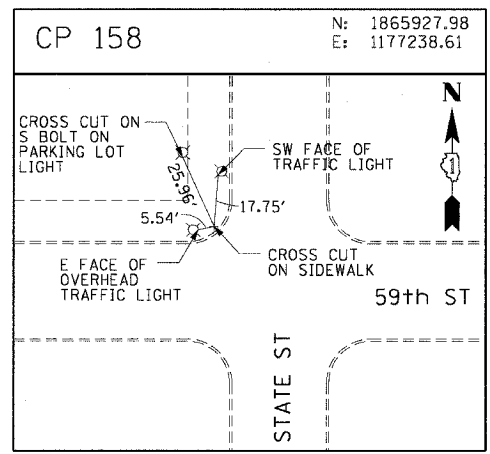
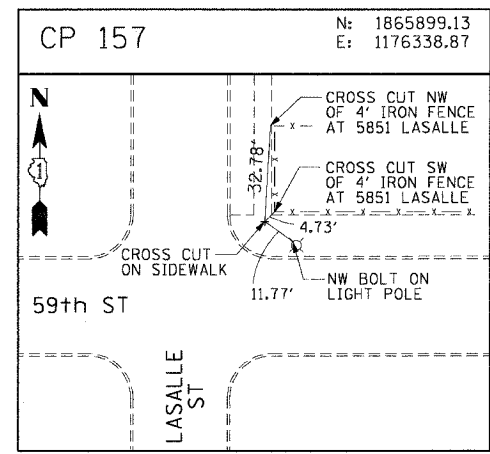
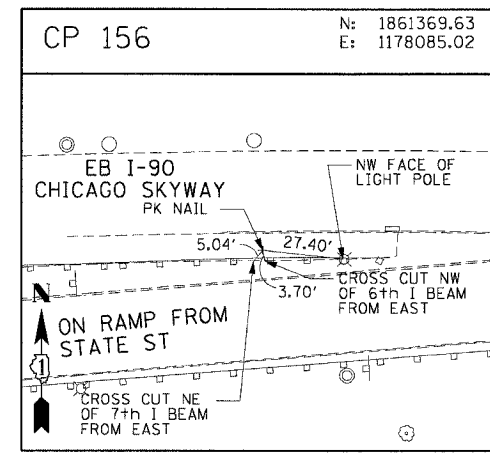
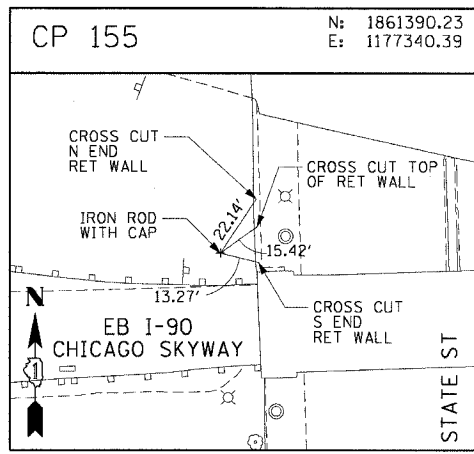
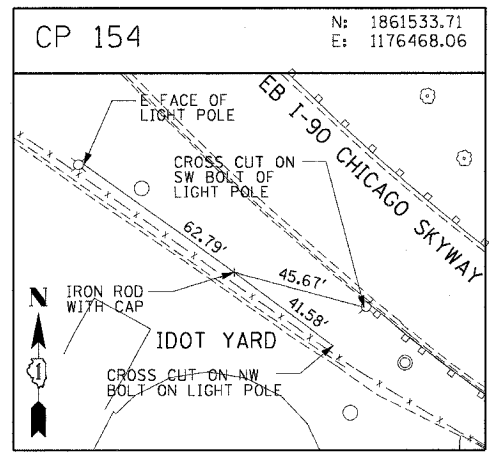


F.A.I. RTE.	SECTION	COUNTY	TOTAL SHEETS	SHEET NO.
90/94	2004-098TS	COOK	63	16
STA.	TO STA.			
FED. ROAD DIST. NO. 1 ILLINOIS FED. AID PROJECT				
62839				



REVISIONS	
NAME	DATE

ILLINOIS DEPARTMENT OF TRANSPORTATION
 F.A.I. 90/94 (DAN RYAN EXPRESSWAY)
 TRAFFIC SIGNALS AT 59TH STREET AND
 WENTWORTH AVENUE / WELLS STREET
 SURVEY TIES AND CONTROL POINTS

SCALE: 1"=30'
 DATE: November 12, 2004
 DRAWN BY: MRK
 CHECKED BY: JAL

MAP: 404660WIN AC-CITR90-Add_CITR9007-59thStAL091042A.GBT 11/17/2004 02:53:37 PM