

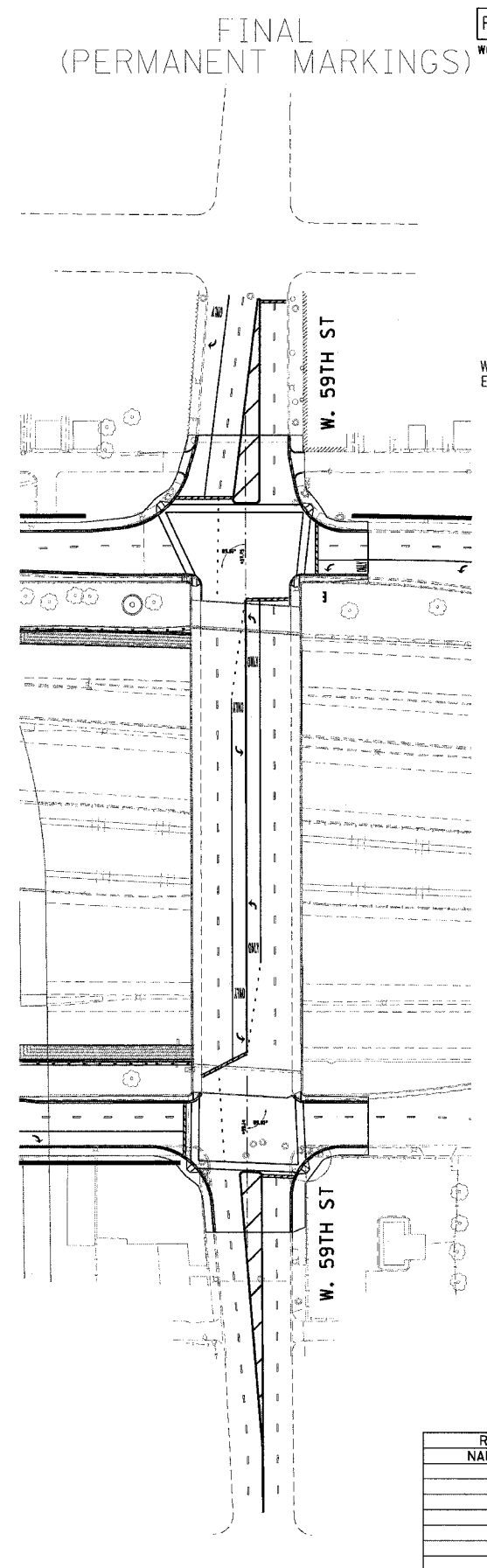
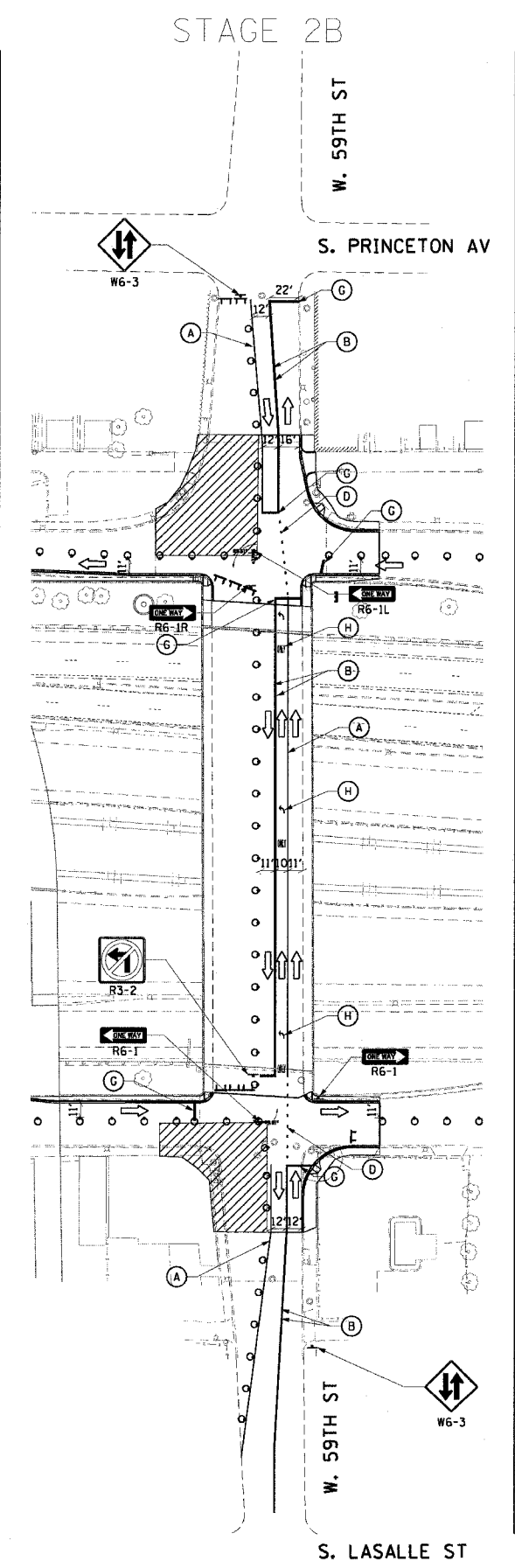
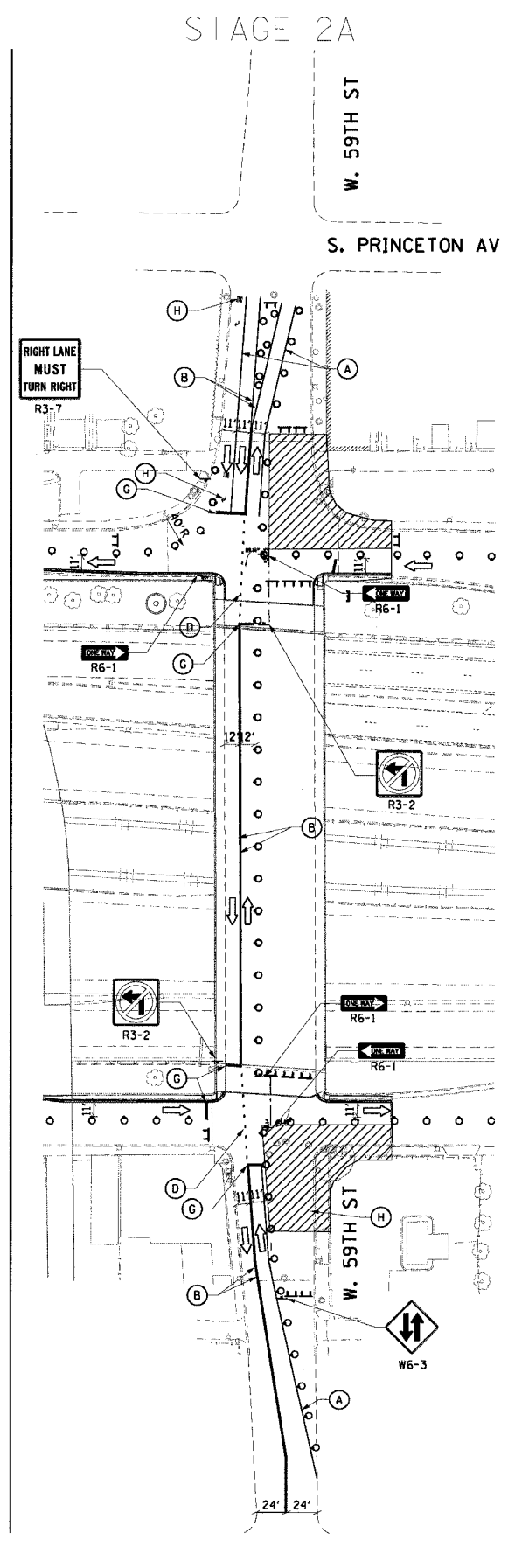
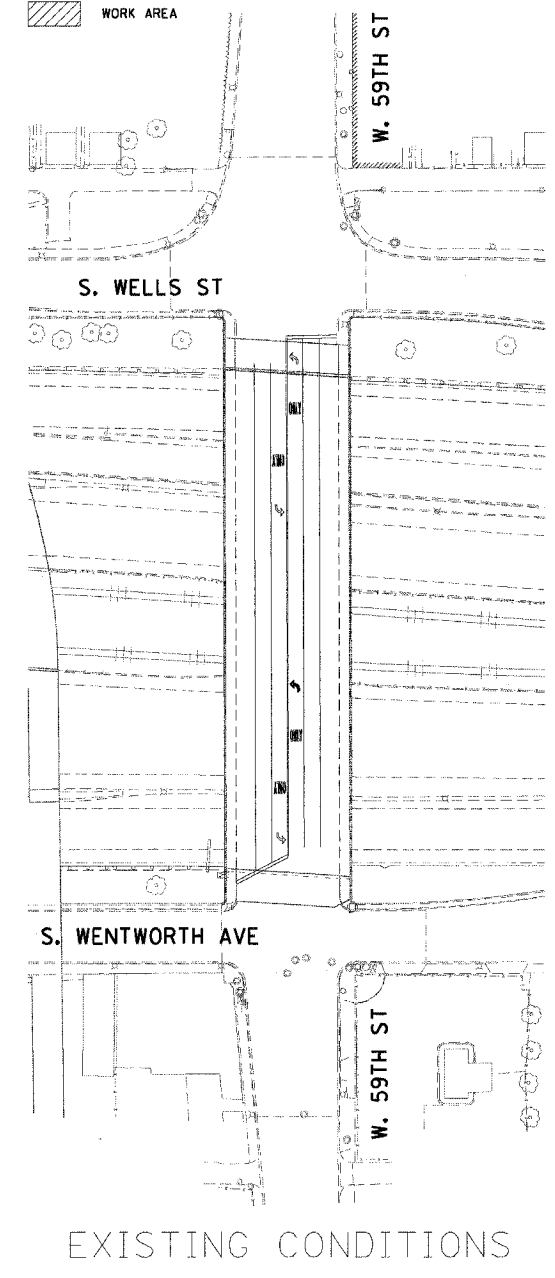
FOR REFERENCE ONLY
 WORK BY IDOT CONTRACT 9C-62693

F.A.I. RTE.	SECTION	COUNTY	TOTAL SHEETS	SHEET NO.
90/94	2004-098TS	COOK	63	21
STA.	TO STA.			
FED. ROAD DIST. NO. 1	ILLINOIS	FED. AID PROJECT		
62839				

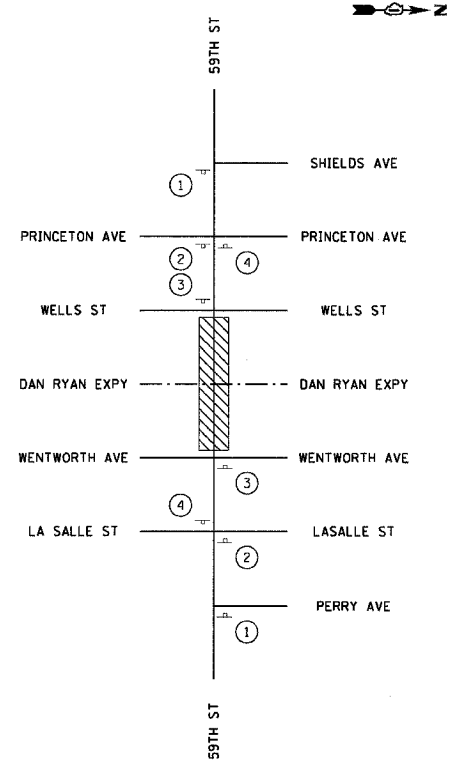
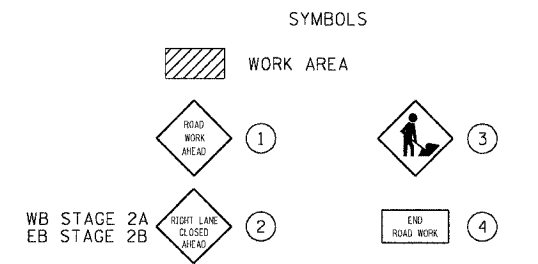
LEGEND

- (A) TEMPORARY PAVEMENT MARKING 4", WHITE, SOLID
- (B) TEMPORARY PAVEMENT MARKING 4", YELLOW, SOLID
- (C) TEMPORARY PAVEMENT MARKING 4", WHITE, 2' DASH/6'SKIP
- (D) TEMPORARY PAVEMENT MARKING 4", YELLOW, 2' DASH/6' SKIP
- (E) TEMPORARY PAVEMENT MARKING 4", WHITE, 6' DASH/18' SKIP
- (F) TEMPORARY PAVEMENT MARKING 12", YELLOW, SOLID
- (G) TEMPORARY PAVEMENT MARKING 24", WHITE, SOLID
- (H) TEMPORARY PAVEMENT MARKING SYMBOLS
- (I) TEMPORARY CONCRETE BARRIER (CONTRACTOR FURNISHED)
- DRUM WITH STEADY BURNING LIGHT (25' SPACING, TYPICAL)
- T TYPE III BARRICADE
- ⇄ ARROW BOARD
- ▨ WORK AREA

STAGE 2A
 STAGE 2B
 FINAL (PERMANENT MARKINGS)



TYPICAL SIGN PLACEMENT



- NOTES:
- APPROACH PAVEMENT FOR THE 59TH STREET BRIDGE WILL NOT BE BUILT IN THIS CONTRACT.
 - PERMANENT PAVEMENT MARKINGS WILL BE PLACED IN CONTRACT 62837.
 - MINIMUM SIGN SPACING OF 200'. PRECISE SIGN PLACEMENT NOT REPRESENTED. REFERENCE IDOT STANDARD 701601-03 FOR SPACING.
 - TEMPORARY MARKINGS SHOWN ARE PAVEMENT MARKING TAPE TYPE III.

REVISIONS	
NAME	DATE

ILLINOIS DEPARTMENT OF TRANSPORTATION
 F.A.I. 90/94 (DAN RYAN EXPRESSWAY)
 TRAFFIC SIGNALS AT 59TH STREET AND
 WENTWORTH AVENUE / WELLS STREET

SUGGESTED STAGES OF CONSTRUCTION
 AND TRAFFIC CONTROL
 STAGE 2

SCALE: 1"=60'
 DATE: November 12, 2004

DRAWN BY: SWANG
 CHECKED BY: RMG

MAP: 4046501V14C-Ctr: 90A-Add_Ctr: 90C07-59TH-ST-INT-CT: 0102A-ST
 03/07/21 PM