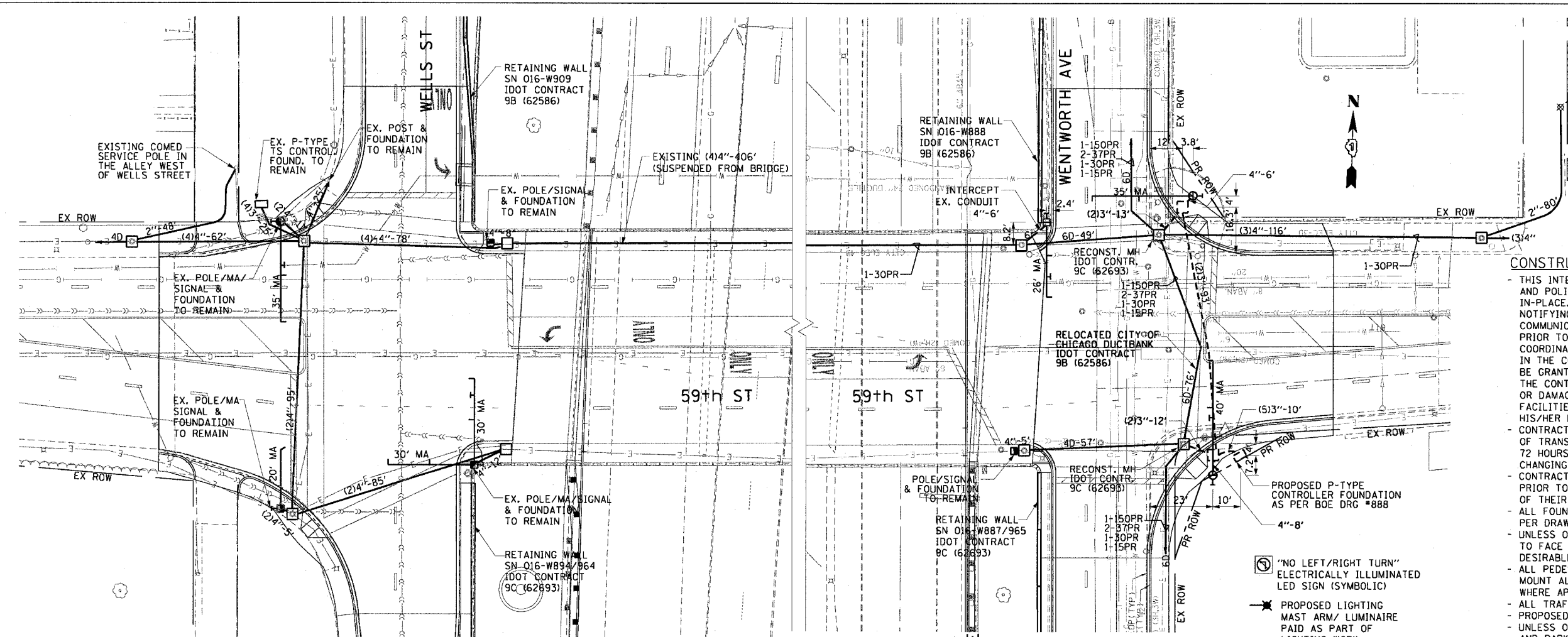


F.A.I. RTE.	SECTION	COUNTY	TOTAL SHEETS	SHEET NO.
90/94	2004-09BTS	COOK	63	23
STA.	TO STA.			
FED. ROAD DIST. NO. 1 ILLINOIS FED. AID PROJECT				

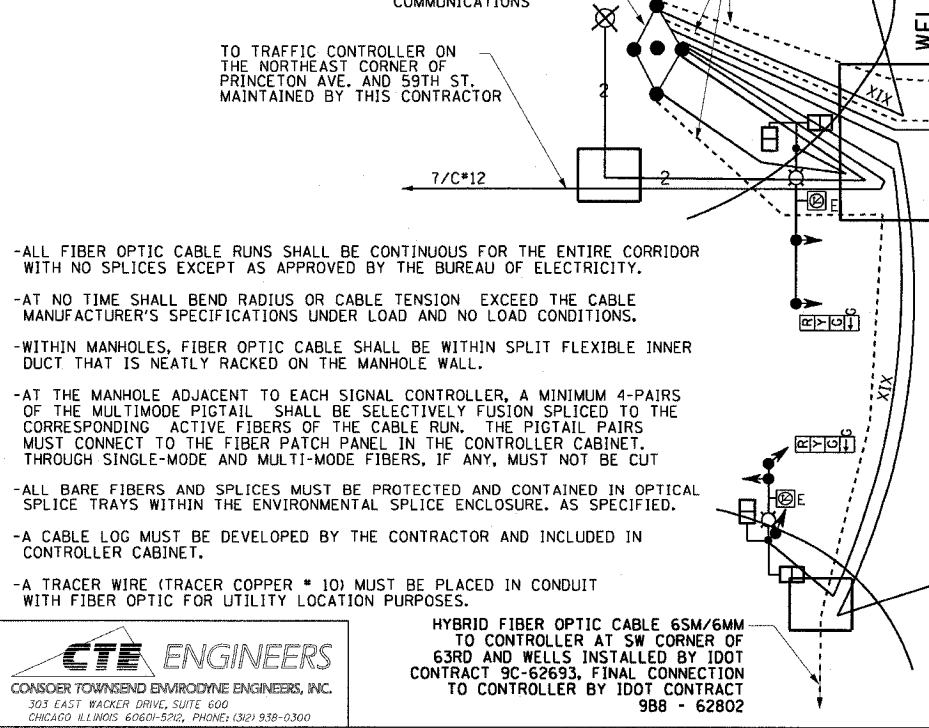
62839

EX. COMED SERVICE POLE



- CONSTRUCTION NOTES:**
- THIS INTERSECTION CONTAINS EXISTING FIRE ALARM AND POLICE COMMUNICATION SYSTEM WHICH WILL REMAIN IN-PLACE. THE CONTRACTOR IS RESPONSIBLE FOR NOTIFYING THE CITY OF CHICAGO OFFICE OF EMERGENCY COMMUNICATIONS (OEC), MR. JEFF CAIRNS: 312-746-9840, PRIOR TO THE COMMENCEMENT OF ALL WORK. REQUIRED COORDINATION OF WORK WITH THE OEC MUST BE INCLUDED IN THE CONTRACT AND NO ADDITIONAL COMPENSATION WILL BE GRANTED. WHILE WORKING NEAR THE OEC FACILITIES, THE CONTRACTOR SHALL TAKE EXTREME CARE NOT TO IMPACT OR DAMAGE THESE FACILITIES. ANY DAMAGE TO THESE FACILITIES SHALL BE PAID FOR BY THE CONTRACTOR AT HIS/HER EXPENSE.
 - CONTRACTOR MUST NOTIFY THE CHICAGO DEPARTMENT OF TRANSPORTATION'S BUREAU OF TRAFFIC (312) 744-0330, 72 HOURS BEFORE COMMENCING CONSTRUCTION OR CHANGING TRAFFIC FLOW.
 - CONTRACTOR TO CONTACT ALL UTILITIES PRIOR TO EXCAVATION FOR EXACT LOCATION OF THEIR UNDERGROUND FACILITIES.
 - ALL FOUNDATIONS IN SIDEWALK TO BE INSTALLED PER DRAWING #828 & #837.
 - UNLESS OTHERWISE NOTED, ALL DIMENSIONS ARE TO FACE OF CURB. A MINIMUM DISTANCE OF 3 FEET IS DESIRABLE FROM CURB FACE TO POLE/PEDESTAL CENTERLINE.
 - ALL PEDESTRIAN SIGNALS TO BE 16" L.E.D. SINGLE FACE. MOUNT ALL PEDESTRIAN SIGNALS BELOW TRAFFIC SIGNALS WHERE APPLICABLE.
 - ALL TRAFFIC SIGNALS TO BE 12" L.E.D..
 - PROPOSED TRAFFIC SIGNAL EQUIPMENT TO BE PAINTED BLACK.
 - UNLESS OTHERWISE INDICATED, CONDUITS UNDER SIDEWALKS AND PARKWAYS TO BE PVC (SCHEDULE #40) AND UNDER PAVEMENTS TO BE PVC (SCHEDULE #80).
 - FOR STANDARD CODE SEE DRAWING #826.
 - ROD AND CLEAN DUCT IN EXISTING CONDUIT SYSTEM (782').
 - REPAIR AND REPLACE DAMAGED CONDUIT (80').
 - DRILL EXISTING MANHOLE OR HANDHOLE (4 EACH).
 - CLEAN EXISTING MANHOLE OR HANDHOLE (7 EACH).
 - RACKING CABLES IN MANHOLE OR HANDHOLE (9 EACH).

NOTE:
WELLS STREET INTERSECTION WAS MODERNIZED BY CDOT CONTRACT E-1-007



- ALL FIBER OPTIC CABLE RUNS SHALL BE CONTINUOUS FOR THE ENTIRE CORRIDOR WITH NO SPLICES EXCEPT AS APPROVED BY THE BUREAU OF ELECTRICITY.
- AT NO TIME SHALL BEND RADIUS OR CABLE TENSION EXCEED THE CABLE MANUFACTURER'S SPECIFICATIONS UNDER LOAD AND NO LOAD CONDITIONS.
- WITHIN MANHOLES, FIBER OPTIC CABLE SHALL BE WITHIN SPLIT FLEXIBLE INNER DUCT THAT IS NEATLY RACKED ON THE MANHOLE WALL.
- AT THE MANHOLE ADJACENT TO EACH SIGNAL CONTROLLER, A MINIMUM 4-PAIRS OF THE MULTIMODE PIGTAIL SHALL BE SELECTIVELY FUSION SPLICED TO THE CORRESPONDING ACTIVE FIBERS OF THE CABLE RUN. THE PIGTAIL PAIRS MUST CONNECT TO THE FIBER PATCH PANEL IN THE CONTROLLER CABINET. THROUGH SINGLE-MODE AND MULTI-MODE FIBERS, IF ANY, MUST NOT BE CUT
- ALL BARE FIBERS AND SPLICES MUST BE PROTECTED AND CONTAINED IN OPTICAL SPLICE TRAYS WITHIN THE ENVIRONMENTAL SPLICE ENCLOSURE, AS SPECIFIED.
- A CABLE LOG MUST BE DEVELOPED BY THE CONTRACTOR AND INCLUDED IN CONTROLLER CABINET.
- A TRACER WIRE (TRACER COPPER # 10) MUST BE PLACED IN CONDUIT WITH FIBER OPTIC FOR UTILITY LOCATION PURPOSES.

CTE ENGINEERS
CONSEDER TOWNSEND ENVIRONMENTAL ENGINEERS, INC.
303 EAST WACKER DRIVE, SUITE 600
CHICAGO ILLINOIS 60601-5202, PHONE: (312) 938-0300

DATE	REVISION
TRAFFIC CONTROL SIGNALS 59th STREET AT WELLS STREET AND WENTWORTH AVENUE CONDUIT, FOUNDATION AND CABLE PLAN	
CITY OF CHICAGO DEPT. OF STREETS AND SANITATION BUREAU OF ELECTRICITY DIVISION OF ELECTRICAL ENGINEERING	
DRAFTSMAN:	CHIEF DRAFTSMAN: ENGINEER:
SUPERVISING ENGINEER: ELEC. DESIGN ENGR.	DWG. NO.
ENGINEER OF ELECTRICITY:	22579A
GEN'L SUPT. OF ELECTRICITY:	DEPUTY COMMISSIONER:
SIZE: 22" x 36"	SCALE: AS NOTED November 12, 2004

REVISIONS	
NAME	DATE

ILLINOIS DEPARTMENT OF TRANSPORTATION
F.A.I. 90/94 (DAN RYAN EXPRESSWAY)
TRAFFIC SIGNALS AT 59TH STREET AND
WENTWORTH AVENUE / WELLS STREET
**TRAFFIC CONTROL SIGNALS
CONDUIT, FOUNDATION AND CABLE PLAN**

SCALE: AS SHOWN DRAWN BY: MRK/NJH
DATE: November 12, 2004 CHECKED BY: MS