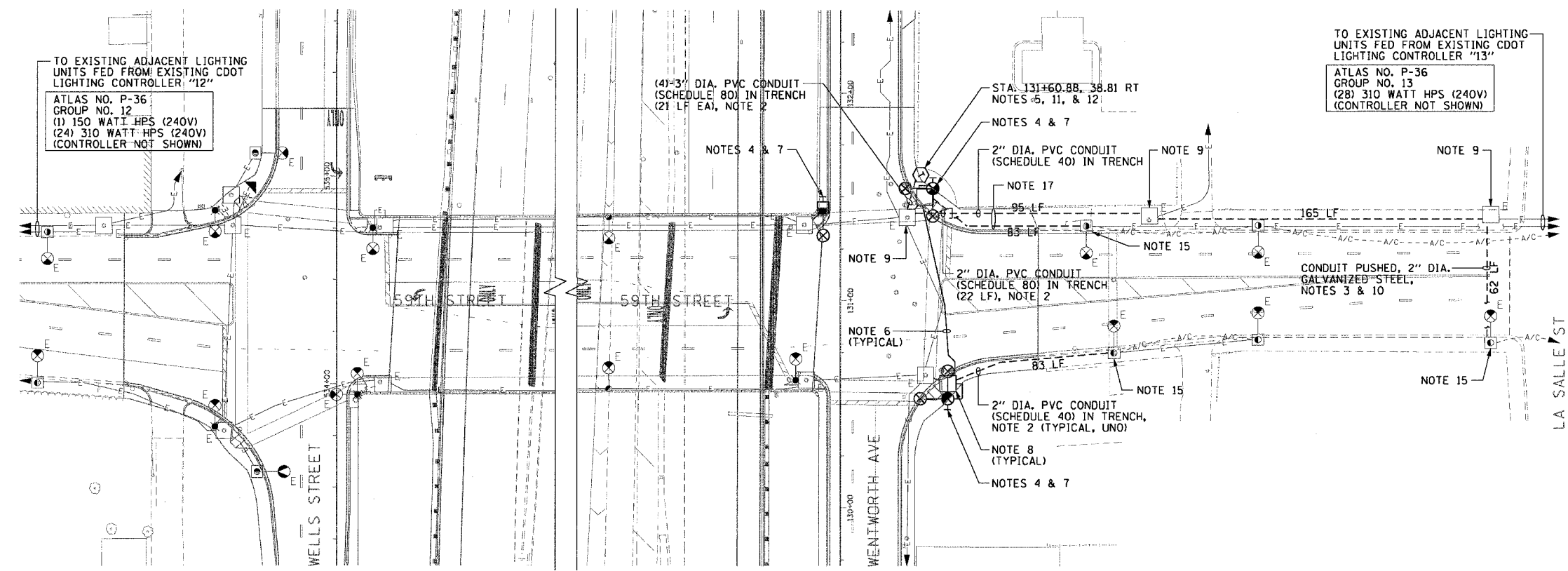
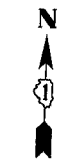
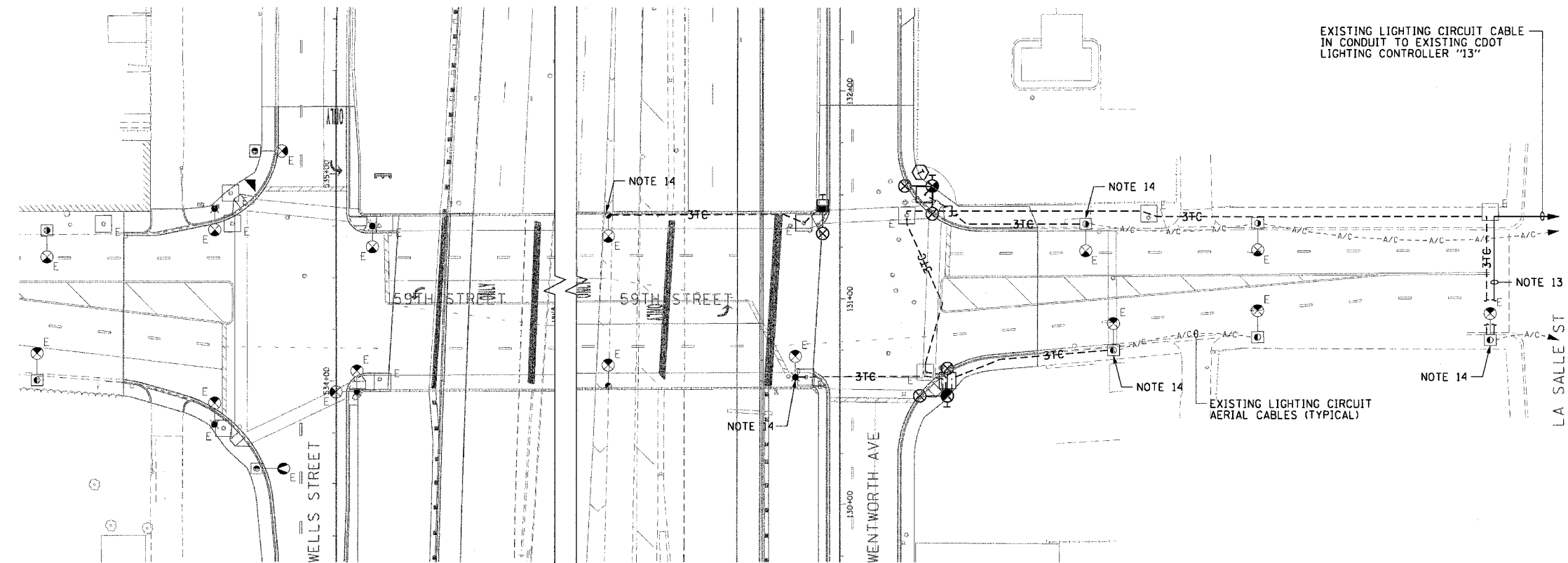


F.A.I. RTE.	SECTION	COUNTY	TOTAL SHEETS	SHEET NO.
90/94	2004-098TS	COOK	63	28
STA.	TO STA.			
FED. ROAD DIST. NO. 1	ILLINOIS	FED. AID PROJECT	62839	



PROPOSED IMPROVEMENTS
(NOTE 16)



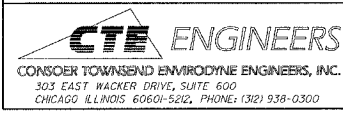
WIRING PLAN
(NOTE 16)

TO EXISTING ADJACENT LIGHTING UNITS FED FROM EXISTING CDOT LIGHTING CONTROLLER "13"
ATLAS NO. P-36
GROUP NO. 13
(28) 310 WATT HPS (240V)
(CONTROLLER NOT SHOWN)

- NOTES:**
- SEE DRAWINGS E-1 AND E-2 FOR CDOT ELECTRICAL GENERAL NOTES, SYMBOLS, AND ABBREVIATIONS.
 - SEE DRAWING BOE-2 FOR BOE CONDUIT IN TRENCH DETAIL.
 - SEE DRAWING BOE-13 FOR BOE CONDUIT UNDER PAVED ROADWAY DETAIL.
 - SEE DRAWING BOE-24 FOR BOE LIGHTING MAST ARM DETAILS.
 - SEE DRAWING BOE-42A FOR BOE TYPE "B" TERMINAL CABINET FOUNDATION DETAILS.
 - PROPOSED CONDUIT RUN WILL BE MEASURED OR COUNTED FOR PAYMENT UNDER THE APPROPRIATE TRAFFIC SIGNAL PAY ITEM. REFER TO THE TRAFFIC SIGNAL PLANS TYPE AND LENGTH OF CONDUIT RUNS.
 - PROPOSED COMBINATION TRAFFIC SIGNAL/LIGHTING UNIT. MAST ARM AND LUMINAIRE WILL BE COUNTED FOR PAYMENT ON THIS DRAWING UNDER THE APPROPRIATE LIGHTING PAY ITEMS. THE POLE AND FOUNDATION WILL BE COUNTED FOR PAYMENT ON THE TRAFFIC SIGNAL PLANS UNDER THE APPROPRIATE TRAFFIC SIGNAL PAY ITEMS. SEE THE TRAFFIC SIGNAL PLANS FOR DETAILS.
 - ALL PROPOSED MANHOLES AND HANDHOLES AS SHOWN ON THIS DRAWING WILL BE MEASURED OR COUNTED FOR PAYMENT UNDER THE APPROPRIATE TRAFFIC SIGNAL PAY ITEM. REFER TO THE TRAFFIC SIGNAL PLANS.
 - ROUTE PROPOSED CONDUIT RUNS TO THE EXISTING MANHOLE OR HANDHOLE AS SHOWN. DRILL EXISTING MANHOLE OR HANDHOLE AND INSTALL PROPOSED CONDUIT THROUGH THE MANHOLE OR HANDHOLE WALL. SEE DRAWING BOE-13 FOR DETAILS.
 - SAWCUT THE EXISTING PAVEMENT AND/OR SIDEWALK AS NEEDED TO INSTALL THE NEW CONDUIT. AFTER ELECTRICAL WORK IS COMPLETED, PATCH THE PAVEMENT AND/OR SIDEWALK TO MATCH THE EXISTING.
 - THE CONTRACTOR MUST INSTALL THE TYPE "B" TERMINAL CABINET FOUNDATION IN THE LOCATION SHOWN ON THIS SHEET. THE TYPE "B" TERMINAL CABINET AND ALL ASSOCIATED WIRING WILL BE INSTALLED BY THE CITY OF CHICAGO OFFICE OF EMERGENCY MANAGEMENT COMMUNICATIONS (OEC). THE CONTRACTOR MUST CONTACT THE OEC (MR. JEFF CAIRNS; 312-746-9840) TO COORDINATE THE INSTALLATION OF ALL APPLICABLE OEC FACILITIES PRIOR TO THE COMMENCEMENT OF WORK.
 - THE CONTRACTOR MUST TAKE EXTREME CARE NOT TO DAMAGE THE EXISTING OEC FACILITIES. ANY DAMAGE TO EXISTING OEC FACILITIES SHALL BE REPAIRED AT THE CONTRACTOR'S EXPENSE.
 - PULL EXISTING LIGHTING CIRCUIT CABLES COILED IN EXISTING MANHOLE THROUGH PROPOSED CONDUIT TO THE EXISTING POLE BASE. SEE DRAWING E-13 FOR POLE BASE WIRING DETAILS.
 - SPLICE THE NEW CABLES TO THE EXISTING LIGHTING CIRCUIT LOCATED AT THE BASE OF THE EXISTING POLE. SEE POLE BASE WIRING DETAIL ON DRAWING E-13.
 - INTERCEPT EXISTING CONDUIT STUB OUT AT EXISTING LIGHT POLE FOUNDATION.
 - COORDINATE ALL ELECTRICAL WORK WITH CIVIL WORK, TRAFFIC SIGNAL WORK, SUGGESTED STAGES OF CONSTRUCTION, TRAFFIC CONTROL PLANS, AND IDOT CONTRACT NO. 62693.
 - INSTALL PARALLEL RACEWAYS IN COMMON TRENCH.



E-6



REVISIONS	
NAME	DATE

ILLINOIS DEPARTMENT OF TRANSPORTATION
F.A.I. 90/94 (DAN RYAN EXPRESSWAY)
TRAFFIC SIGNALS AT 59TH STREET AND
WENTWORTH AVENUE / WELLS STREET
**59TH STREET BRIDGE
ROADWAY LIGHTING IMPROVEMENTS**

SCALE: 1"=30'
DATE: November 12, 2004
DRAWN BY: HAR
CHECKED BY: WDS

11/10/2004 09:16:13 AM