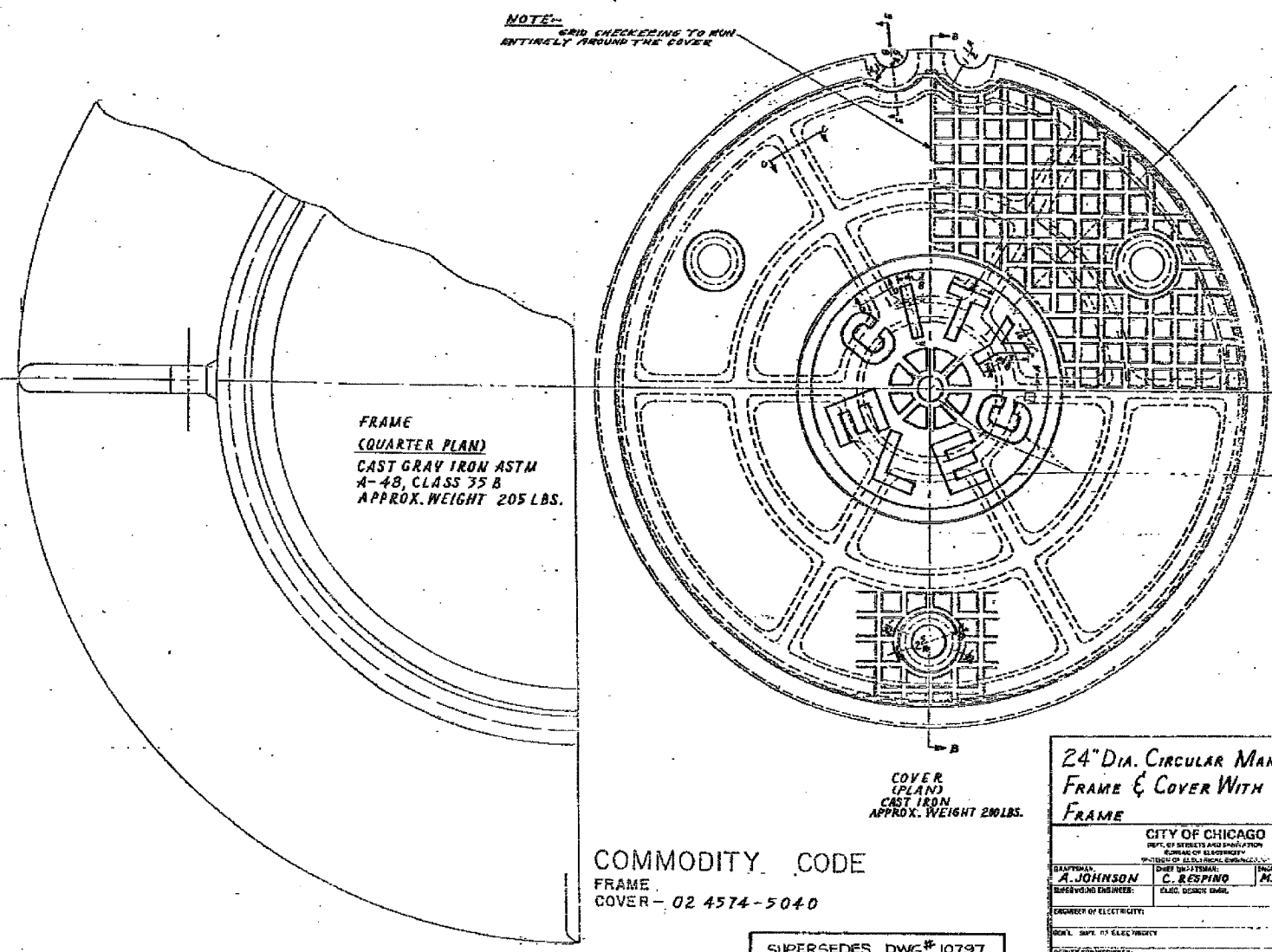
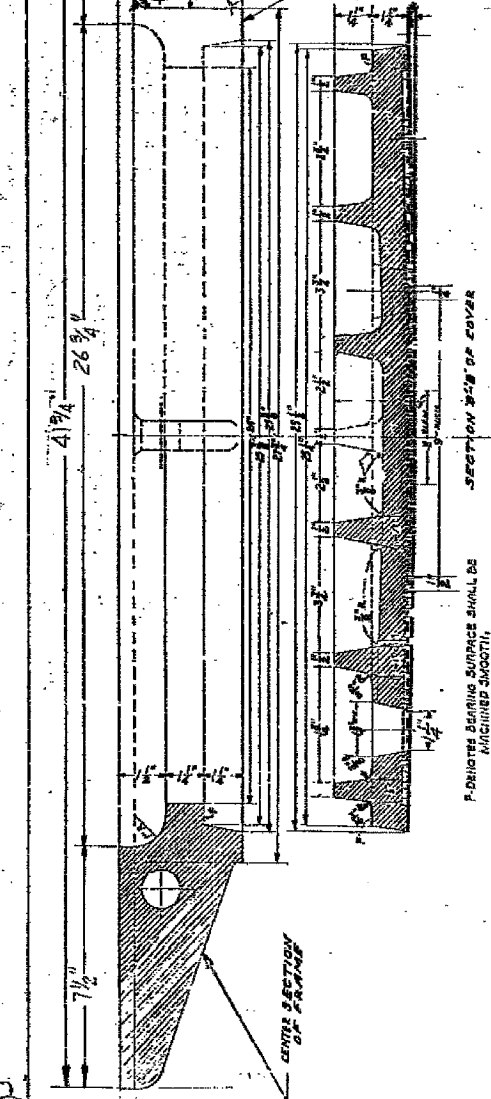
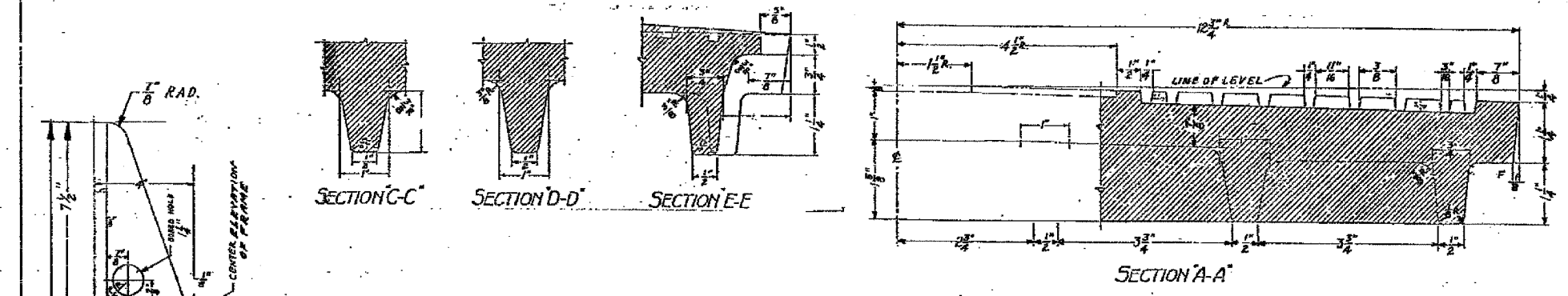


F.A.I. RT.:	SECTION	COUNTY	TOTAL SHEETS	SHEET NO.
90/94	2004-098TS	COOK	63	52
STA.	TO STA.			
FED. ROAD DIST. NO. 1		ILLINOIS	FED. AID PROJECT	

62839



NOTE: THE TOP SURFACE OF THE 3 CIRCLES AND ALL OF THE LETTERS TO BE RAISED 1/8" ABOVE THE SURFACE WITHIN THE 3" DIAMETER WITH THE DRAFT ANGLE.

COMMODITY CODE
FRAME
COVER - 02 4574-5040

SUPERSEDES DWG# 10797
DATED 2-10-35

24" DIA. CIRCULAR MANHOLE FRAME & COVER WITH 4 1/4" O.D. FRAME		
CITY OF CHICAGO DEPT. OF STREETS AND SANITATION BUREAU OF ELECTRICAL ENGINEERING 100 SOUTH DEARBORN STREET, CHICAGO, ILL. 60606		
DESIGNED BY: A. JOHNSON	CHECKED BY: C. RESPINO	APPROVED BY: M. DE BARTOLD
SUPERVISING ENGINEER: ELEC. DESIGN ENGINEER		DIV. C. R.E.
ENGINEER OF ELECTRICITY:		
PROJ. NO. 115 ELECTRICITY		872
QUALITY CONTROL:		
PER:	SCALE: 1/4" = 1'-0"	DATE: 4-24-92

REVISIONS	
NAME	DATE

ILLINOIS DEPARTMENT OF TRANSPORTATION
F.A.I. 90/94 (DAN RYAN EXPRESSWAY)
TRAFFIC SIGNALS AT 59TH STREET AND
WENTWORTH AVENUE / WELLS STREET

BOE STANDARD DETAILS

SCALE: NOT TO SCALE
DATE: November 12, 2004

DRAWN BY: HAR
CHECKED BY: WDS