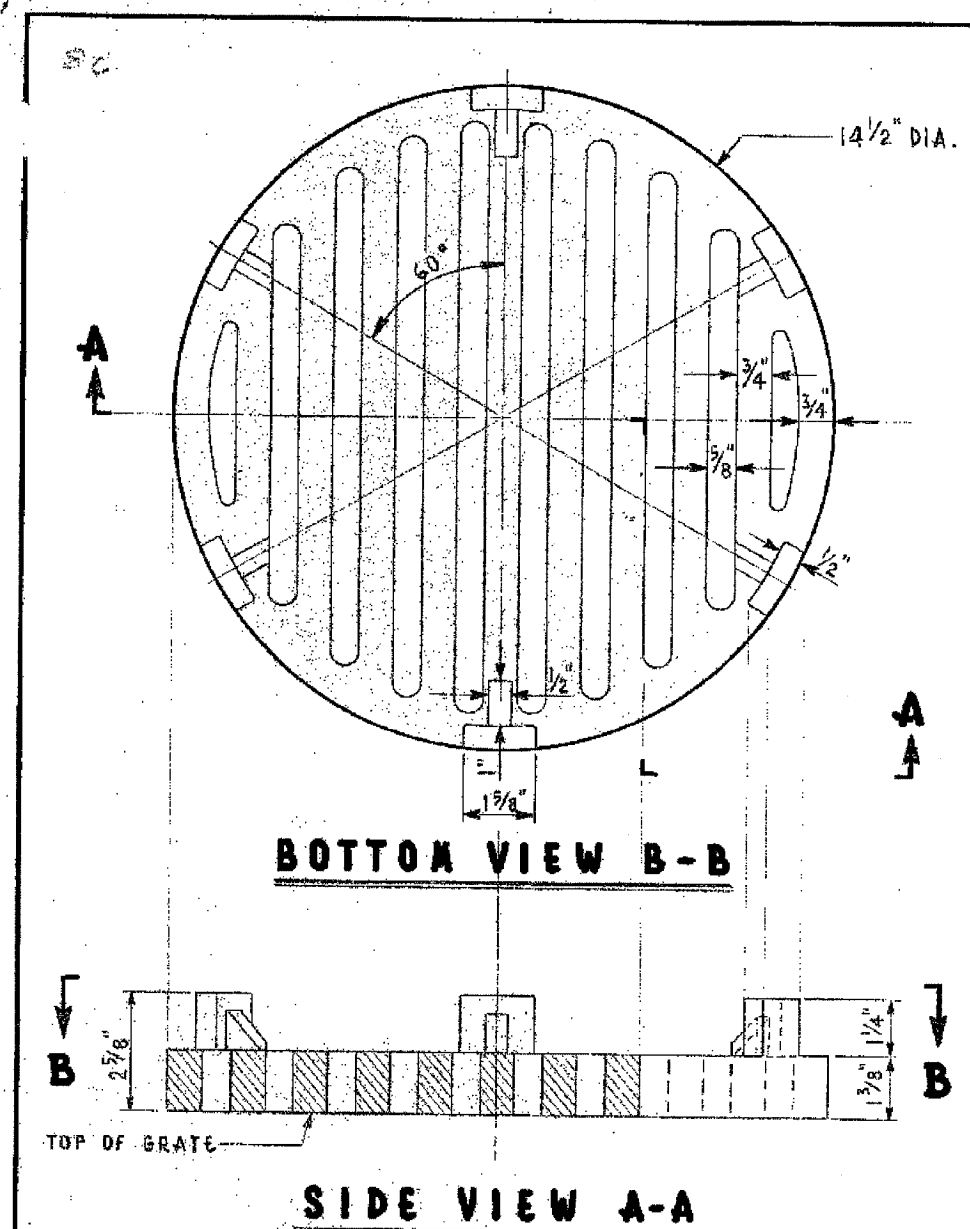


**MATERIAL:**

S.A.E. 1035 HOT ROLLED STEEL.  
HOT GALVANIZED ZINC COATING  
0.002 INCH THICK OVER ENTIRE  
SURFACE.

REVISED		CITY OF CHICAGO		
RE-DRAWN		DEPT. OF STREETS AND SANITATION		
A 11-30-73		BUREAU OF ELECTRICITY		
		DIVISION OF ELECTRICAL ENGINEERING		
B		DRAWN	CHECKED	ENGINEER
C		E. GERULIS	M. SHINE	J. O'CONNOR
D		ENG. OF ELEC.		DRG. NO.
E		Supt. of Elect.		<b>7878</b>
F		Supt. of Elect.		
G		Supt. of Elect.		
		SIZE 8 1/2" x 14"	SCALE: 1/2" = 1"	DATE 11-30-73



**MATERIAL: CAST IRON**  
**APPROX. WT.: 34 LBS.**

REVISED		CITY OF CHICAGO		
A 11-30-73		DEPT. OF STREETS AND SANITATION		
		BUREAU OF ELECTRICITY		
		DIVISION OF ELECTRICAL ENGINEERING		
B		DRAWN	CHECKED	ENGINEER
C		E. GERULIS	M. SHINE	J. O'CONNOR
D		ENG. OF ELEC.		DRG. NO.
E		Supt. of Elect.		<b>10792</b>
F		Supt. of Elect.		
G		Supt. of Elect.		
		SIZE 8 1/2" x 14"	SCALE: 3/8" = 1"	DATE 11-30-73

REVISIONS	
NAME	DATE

ILLINOIS DEPARTMENT OF TRANSPORTATION  
F.A.I. 90/94 (DAN RYAN EXPRESSWAY)  
TRAFFIC SIGNALS AT 59TH STREET AND  
WENTWORTH AVENUE / WELLS STREET

BOE STANDARD DETAILS

SCALE: NOT TO SCALE  
DATE: November 12, 2004  
DRAWN BY: HAR  
CHECKED BY: WDS