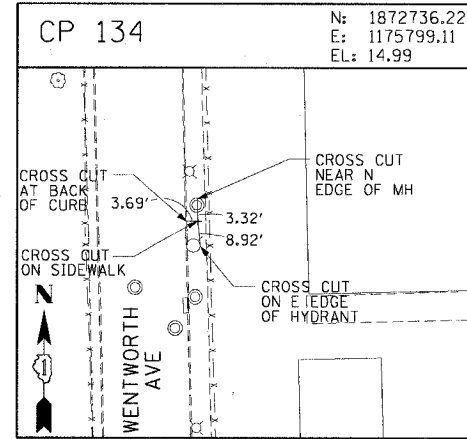
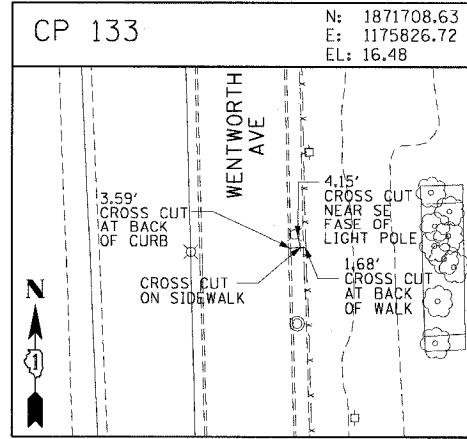
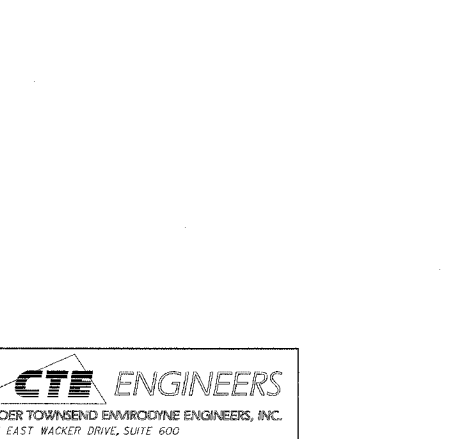
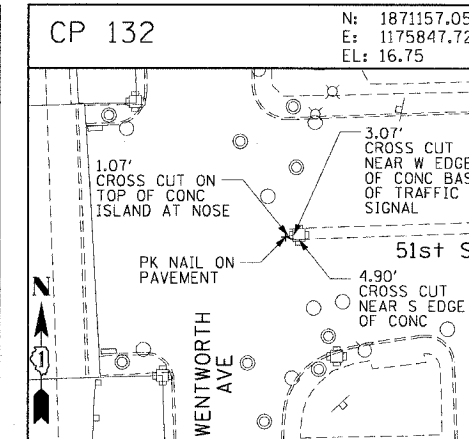
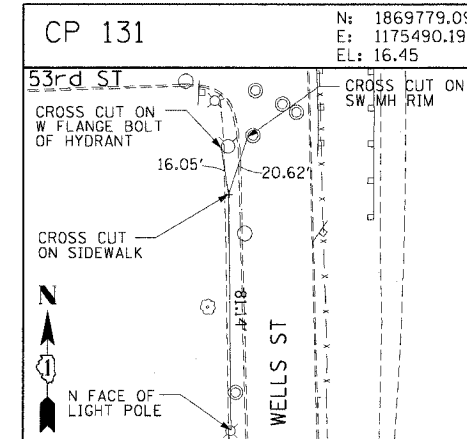
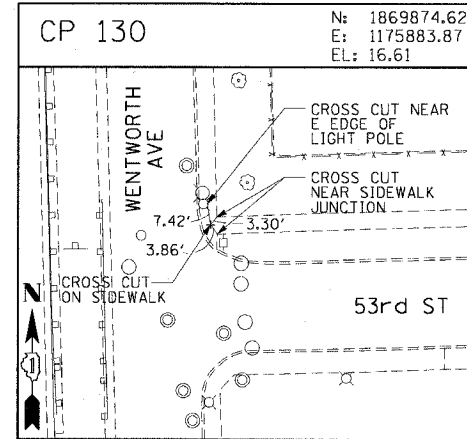
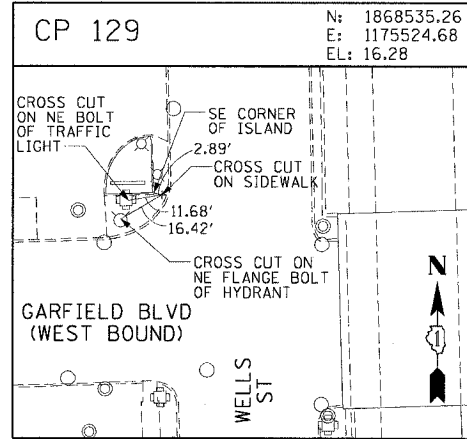
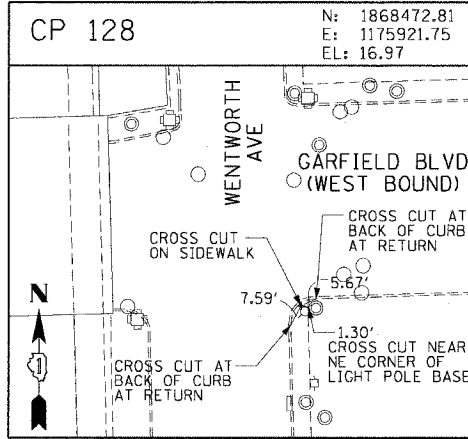
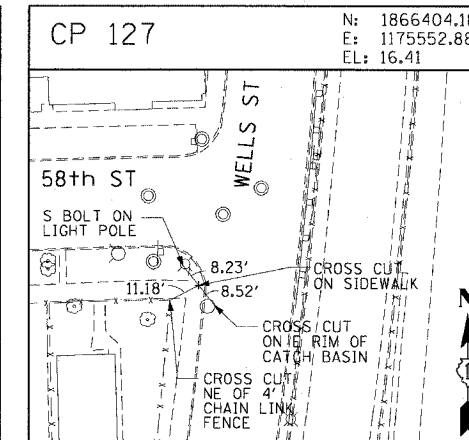
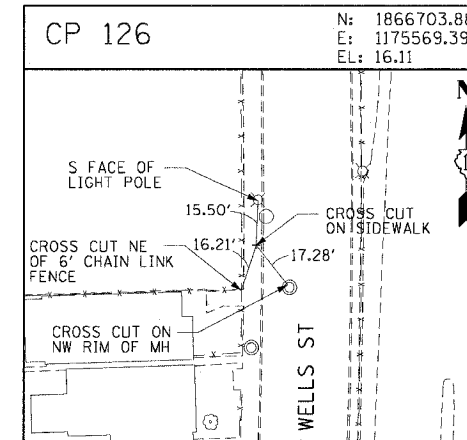
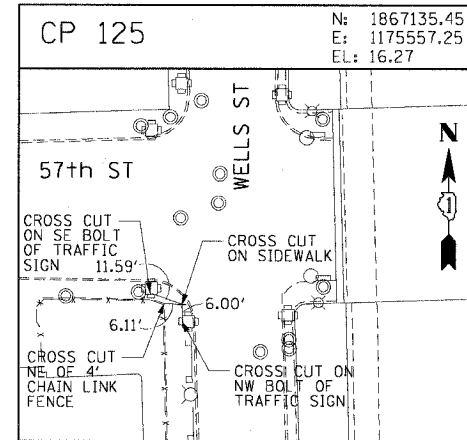
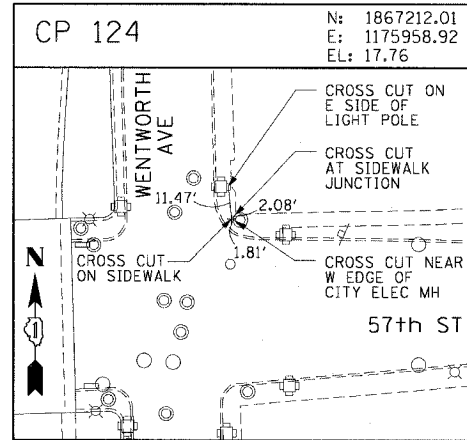
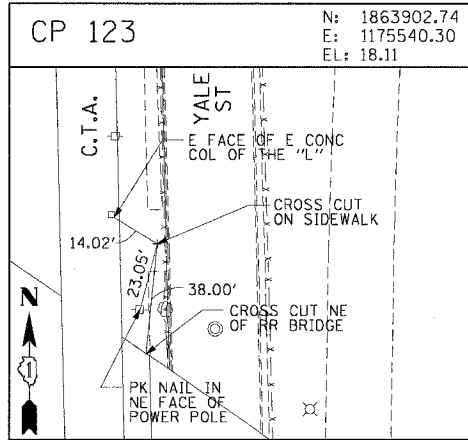
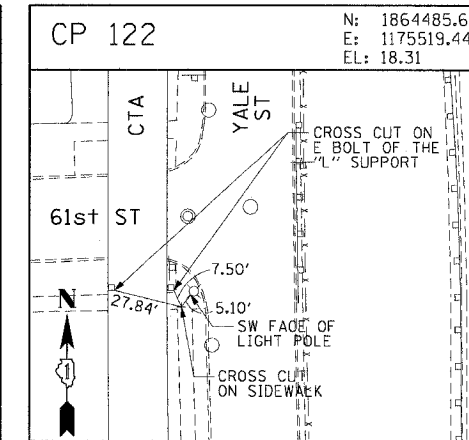
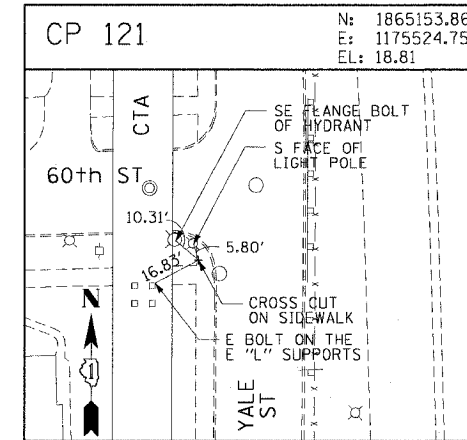
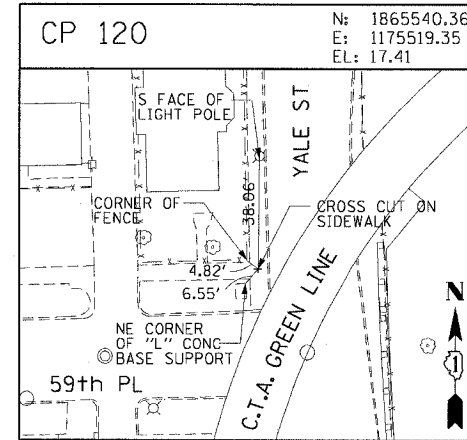
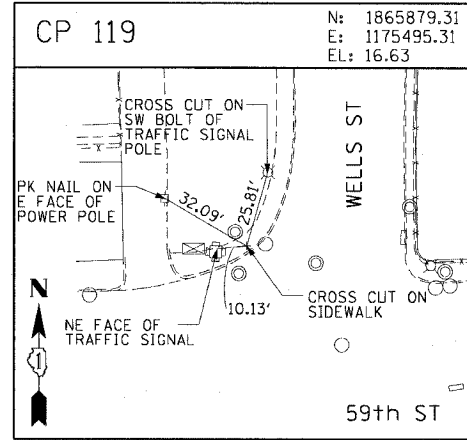
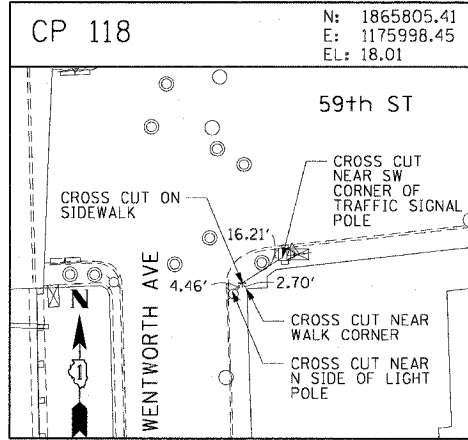


F.A.I. RTE.	SECTION	COUNTY	TOTAL SHEETS	SHEET NO.
90/94	2004-100T	COOK	27	15
STA.		TO STA.		
FED. ROAD DIST. NO. 1		ILLINOIS FED. AID PROJECT		
62841				



**CTE ENGINEERS**  
CONSER TOWNSEND ENVIRONMENTAL ENGINEERS, INC.  
303 EAST WACKER DRIVE, SUITE 600  
CHICAGO, ILLINOIS 60601-5202, PHONE: (312) 938-0300

REVISIONS	
NAME	DATE

ILLINOIS DEPARTMENT OF TRANSPORTATION  
F.A.I. 90/94 (DAN RYAN EXPRESSWAY)  
63rd ST TO 59th ST (SEWER TELEVISION)  
**SURVEY TIES AND CONTROL POINTS**

SCALE: 1"=30'  
DATE: October 22, 2004

DRAWN BY: MRK  
CHECKED BY: JAL

10/14/2004 10:55:40 AM