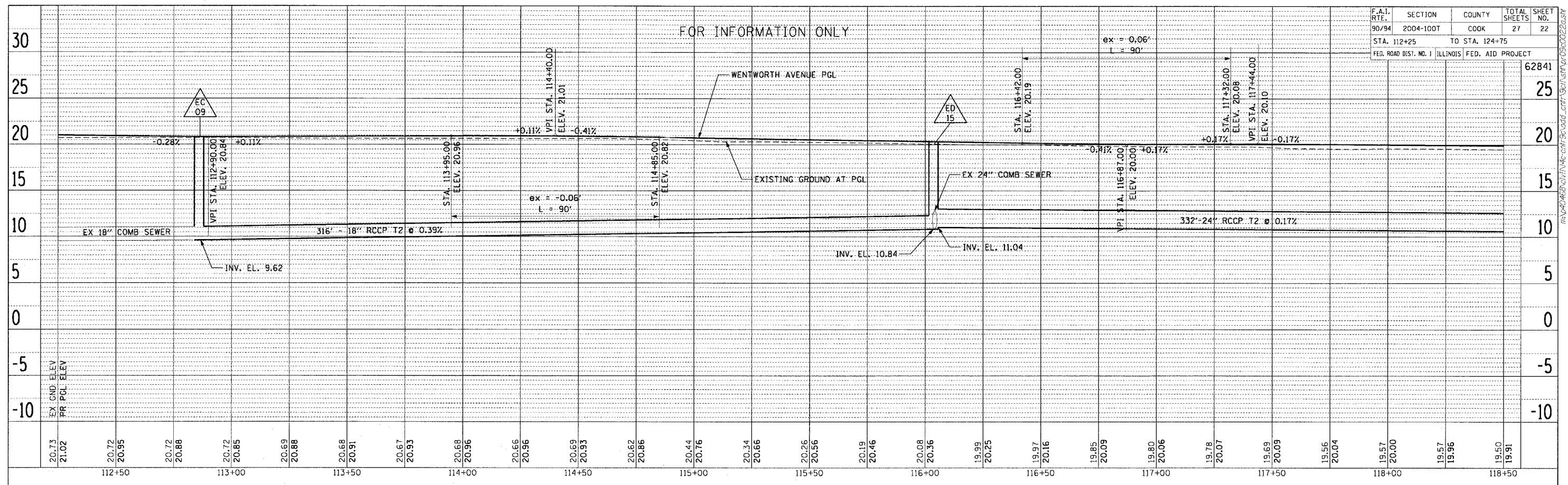
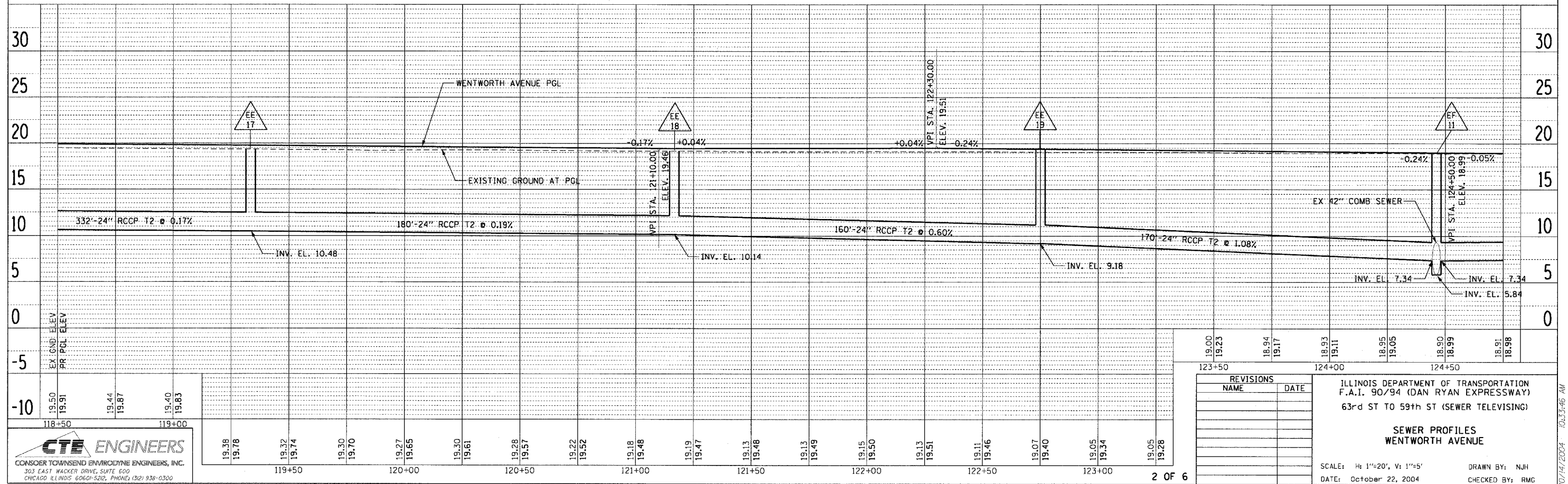


F.A.I. RTE.	SECTION	COUNTY	TOTAL SHEETS	SHEET NO.
90/94	2004-100T	COOK	27	22
STA. 112+25		TO STA. 124+75		
FED. ROAD DIST. NO. 1 ILLINOIS FED. AID PROJECT				
				62841



PLAN	SURVEYED	DATE
NOTE BOOK	ALIGNED	
NO.	RT. OF WAY	
	CHECKED	
	FILE NAME	



PLAN	SURVEYED	DATE
NOTE BOOK	ALIGNED	
NO.	RT. OF WAY	
	CHECKED	
	FILE NAME	

REVISIONS	
NAME	DATE

ILLINOIS DEPARTMENT OF TRANSPORTATION
 F.A.I. 90/94 (DAN RYAN EXPRESSWAY)
 63rd ST TO 59th ST (SEWER TELEVISIONING)

**SEWER PROFILES
 WENTWORTH AVENUE**

SCALE: H: 1"=20', V: 1"=5'
 DATE: October 22, 2004

DRAWN BY: NJH
 CHECKED BY: RMG

CTE ENGINEERS
 CONSOER TOWNSEND ENVIRONMENTAL ENGINEERS, INC.
 303 EAST WACKER DRIVE, SUITE 600
 CHICAGO ILLINOIS 60601-5222, PHONE: (312) 938-0300

FOR INFORMATION ONLY

10/14/2004 10:33:46 AM