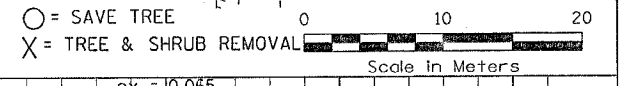
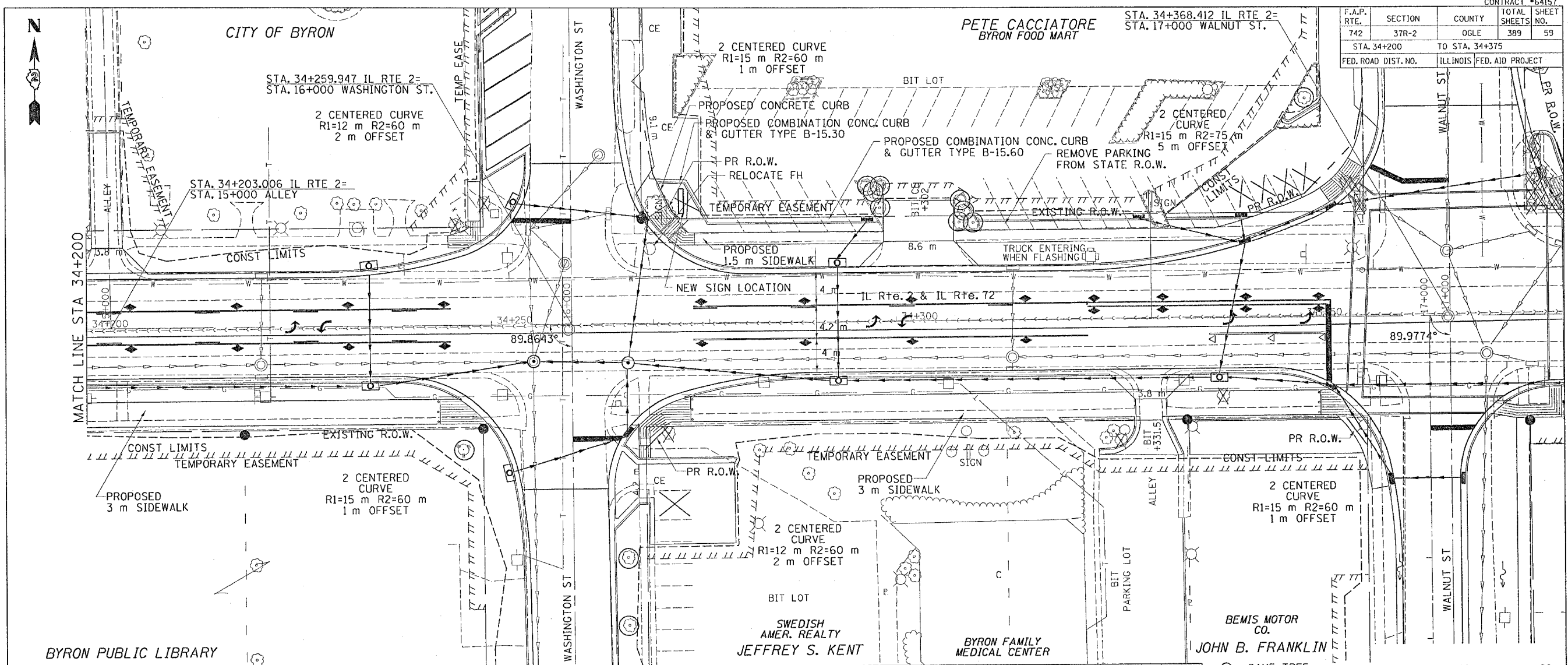


F.A.P. RTE.	SECTION	COUNTY	TOTAL SHEETS	SHEET NO.
742	37R-2	OGL	389	59
STA. 34+200		TO STA. 34+375		
FED. ROAD DIST. NO.		ILLINOIS FED. AID PROJECT		



$ex = 0.065$   
 $k = 48$   
 $50.000 \text{ m V.C.}$

STATION	ELEVATION	STAGE 1	STAGE 2	STAGE 3
34+200.0	220.999	EARTH EX=1666.42 CU M EMBANKMENT=0.39 CU M WASTE=1249.40 CU M	EARTH EX=282.78 CU M EMBANKMENT=0.00 CU M WASTE=212.00 CU M	EARTH EX=1392.32 CU M EMBANKMENT=77.41 CU M BORROW=966.8 CU M
34+212.5	220.964			
34+225.0	220.960			
34+237.5	220.905			
34+250.0	220.885			
34+262.5	220.912			
34+275.0	220.810			
34+287.5	220.890			
34+300.0	220.735			
34+312.5	220.871			
34+325.0	220.660			
34+337.5	220.875			
34+350.0	220.650			
34+362.5	220.824			
34+375.0	220.770			

BY	DATE

BY	DATE