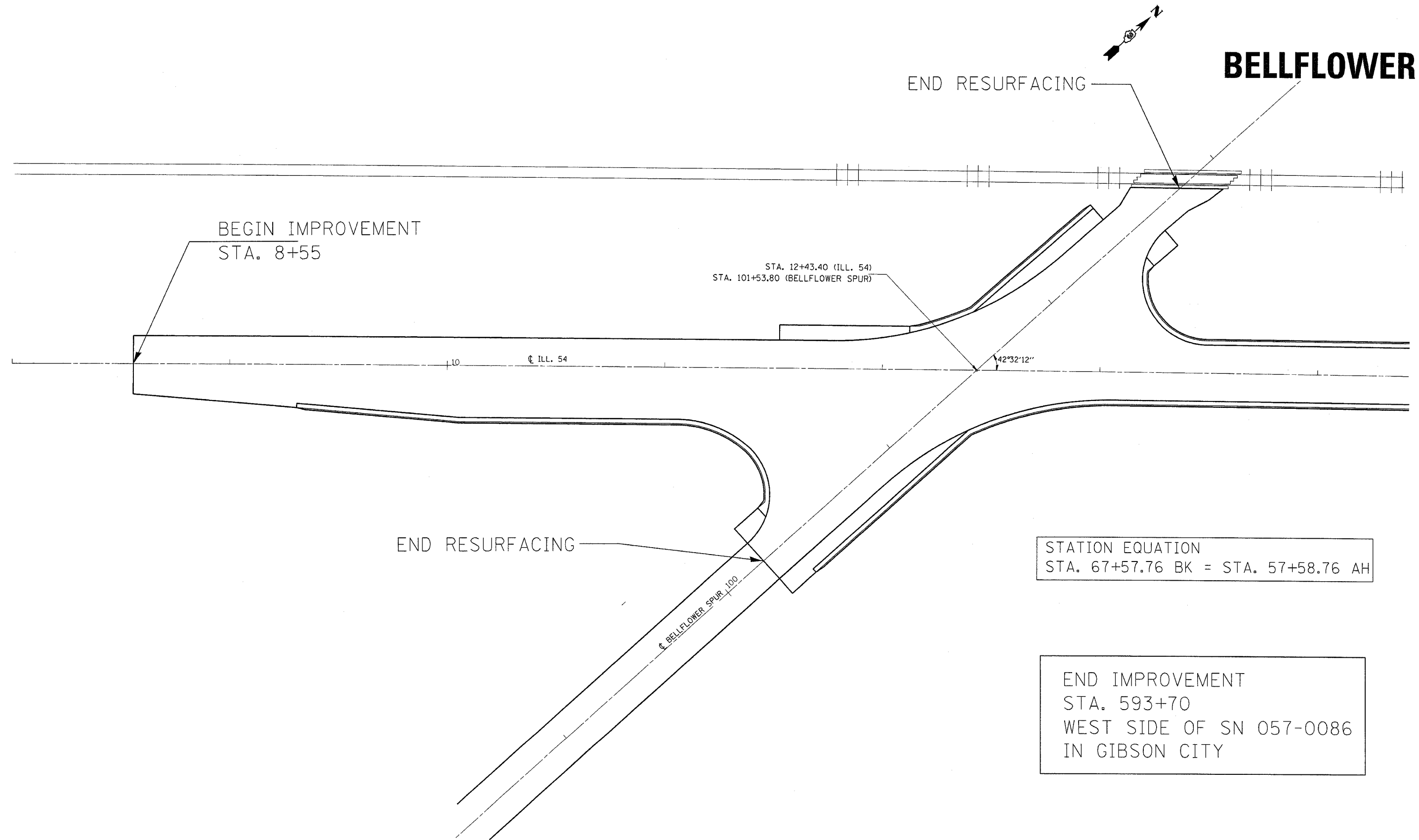


F. A. P. NTE.	SECTION	COUNTY	TOTAL SHEETS	SHEET NO
71	(116,117)RS-1	*	12	8
STA.		TO STA.		
FED. ROAD DIST. NO.		ILLINOIS	FED. AID PROJECT	
* MCLEAN, CHAMPAIGN, FORD				



BELLFLOWER

END RESURFACING

BEGIN IMPROVEMENT
STA. 8+55

STA. 12+43.40 (ILL. 54)
STA. 101+53.80 (BELLFLOWER SPUR)

C ILL. 54

42°32'12"

END RESURFACING

C BELLFLOWER SPUR 100

STATION EQUATION
STA. 67+57.76 BK = STA. 57+58.76 AH

END IMPROVEMENT
STA. 593+70
WEST SIDE OF SN 057-0086
IN GIBSON CITY

PROJECT LIMITS