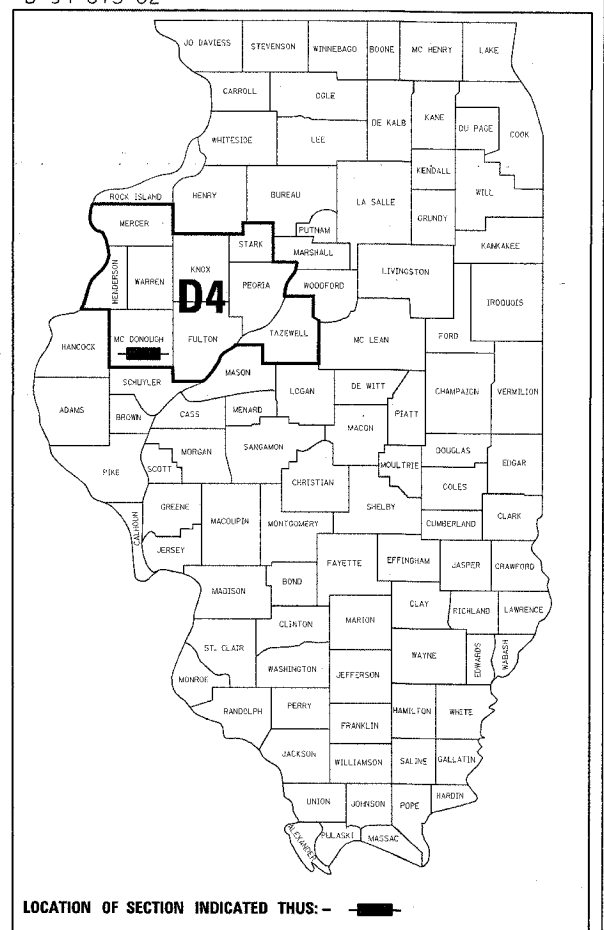


68266

F.A.P. RTE.	SECTION	COUNTY	TOTAL SHEETS	SHEET NO.
618	33(EXT) BR	MCDONOUGH	64	1

D-94-075-02



LOCATION OF SECTION INDICATED THUS: -

# STATE OF ILLINOIS

## DEPARTMENT OF TRANSPORTATION

### DIVISION OF HIGHWAYS

# PLANS FOR PROPOSED FEDERAL AID HIGHWAY

## F.A.P. 618 ROUTE (IL 41) SECTION 33(EXT) BR

## MCDONOUGH COUNTY C-94-092-02



LATITUDE 40°29'53.67"  
LONGITUDE 90°30'16.81"

THIS WORK INCLUDE REMOVAL OF KEPPLE CREEK STRUCTURE (0055-0024) AND REPLACEMENT BY DOUBLE 10'x8' BOX CULVERT, RAISING EXISTING VERTICAL PROFILE APPROXIMATELY 4' AND OTHER APPROACH AND COLLATERAL WORK

- NPDES
- SUPERPAVE PROJECT
- QC/QA BITUMINOUS

STATE OF ILLINOIS  
DEPARTMENT OF TRANSPORTATION  
DIVISION OF HIGHWAYS

SUBMITTED August 20 04  
*Joseph E. Crane*  
DISTRICT ENGINEER

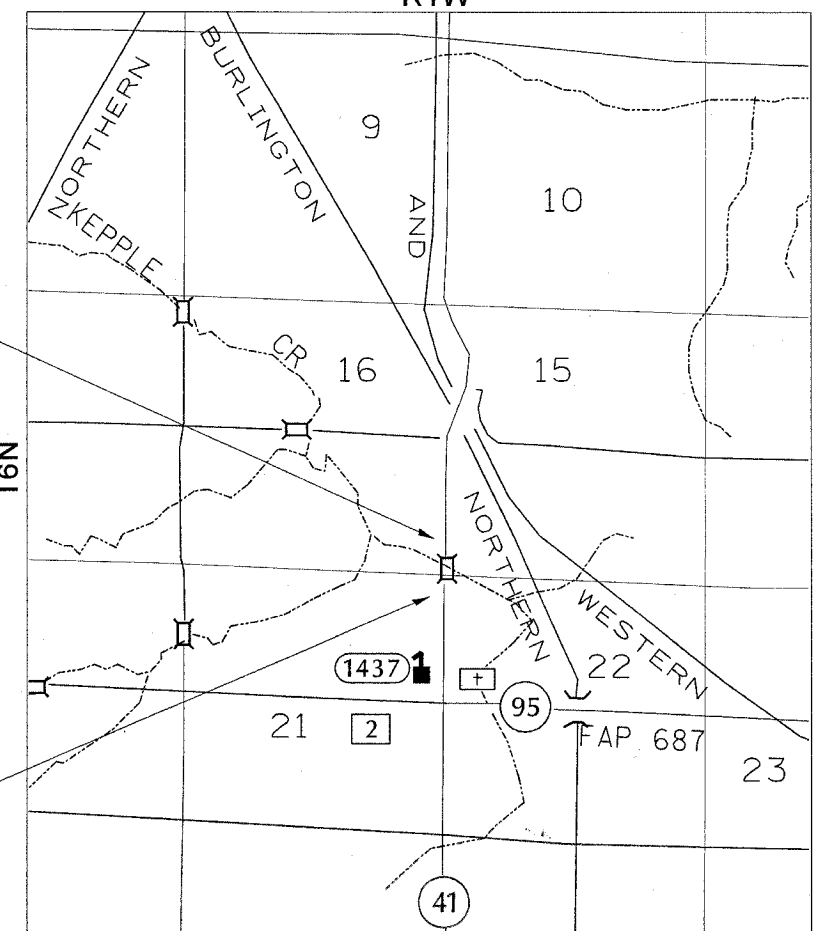
October 1 20 04  
*Mike Hine*  
ENGINEER OF DESIGN AND ENVIRONMENT

October 1 20 04  
*Victor Maden*  
DIRECTOR, DIVISION OF HIGHWAYS

**PRINTED BY THE AUTHORITY OF THE STATE OF ILLINOIS**

REVISED  
10-21-04

MAP NOT TO SCALE



PROJECT BEGINS  
STA 1008+50

PROJECT ENDS  
STA 1020+50

GROSS LENGTH OF PROJECT = 1200 FEET = 0.23 MILES  
NET LENGTH OF PROJECT = 1140 FEET = 0.22 MILES

### INDEX OF SHEETS

- 1 Cover Sheet
- 2-4 Commitments, General Notes, Job Specific Notes & Utility Adjustments
- 5 Summary of Quantities
- 6-8 Existing & Proposed Typical Sections
- 9-11 Schedule of Quantities
- 12 Plan & Profile Sheet
- 13 Run-A-Round Plan & Profile
- 14 Proposed Profile Correction Details
- 15 Run-A-Round Removal
- 16 Landscaping
- 17 Right Of Way
- 18 Pavement Marking
- 19 Detail Of Trench Back fill For Box Culvert
- 20-26 Structure Plans For Box Culvert
- 27-37 District CADD Standards
- 38-63 Cross Sections Highway Standards

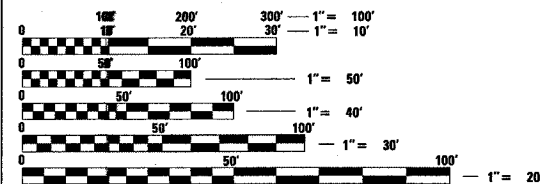
### LIST OF HIGHWAY STANDARDS

- 280001-02
- 515001-02
- 630001-04
- 630101-04
- 630301-02
- 635006-02
- 636001
- 701001
- 701006-01
- 701306
- 701011
- 701326-01
- 701331-01
- 702001-04

### LIST OF CADD STANDARDS

- 205001-D4
- 280001-D4
- 280101-D4
- 281001-D4
- 406101-D4
- 406301-D4
- 440001-D4
- 667101-D4
- 780001-D4

ADT 2900 (2001)  
PV = 88%  
SU = 4.3%  
MU = 6.9%  
A MINOR ARTERIAL  
DESIGN (POSTED) SPEED : 55 MPH



FULL SIZE PLANS HAVE BEEN PREPARED USING STANDARD ENGINEERING SCALES. REDUCED SIZED PLANS WILL NOT CONFORM TO STANDARD SCALES. IN MAKING MEASUREMENTS ON REDUCED PLANS, THE ABOVE SCALES MAY BE USED.

J.U.L.I.E.  
JOINT UTILITY LOCATION INFORMATION FOR EXCAVATION  
1-800-892-0123

PROJECT ENGR.: Maureen Addis 309671-3454

DESIGNER: Mike Mohamed 309671-3465

CONTRACT NO. 68266

CATALOG NO. 032576-00D