

68266

F.A. RTE.	SECTION	COUNTY	TOTAL SHEETS	SHEET NO.
618	33(EXT) BR	MCDONOUGH	63	13
STA. 1007+00		TO STA. 1020+00		
FED. ROAD DIST. NO.		ILLINOIS FED. AID PROJECT		

PROP. CURVE C1
 PI STA. = 1+30.32
 $\Delta = 13^\circ 45' 40''$ (LT)
 $D = 5^\circ 18' 19''$
 $R = 1,080.00'$
 $T = 130.32'$
 $L = 259.39'$
 $E = 7.83'$
 $e = \text{---}$
 T.R. = ---
 S.E. RUN = ---
 P.C. STA = 0+00.00
 P.T. STA = 2+59.39

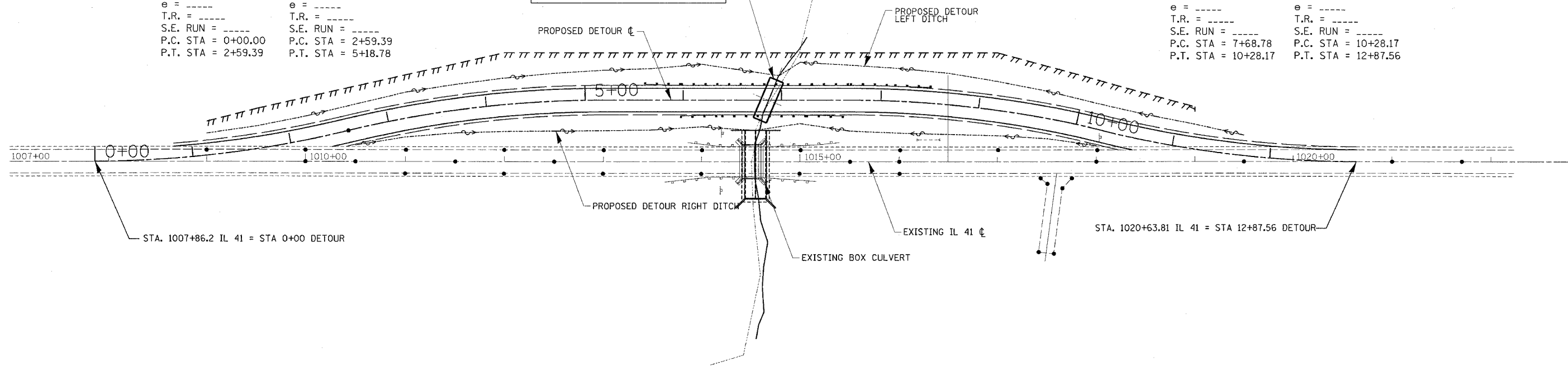
PROP. CURVE RUNARND-2
 PI STA. = 3+89.71
 $\Delta = 13^\circ 45' 40''$ (RT)
 $D = 5^\circ 18' 19''$
 $R = 1,080.00'$
 $T = 130.32'$
 $L = 259.39'$
 $E = 7.83'$
 $e = \text{---}$
 T.R. = ---
 S.E. RUN = ---
 P.C. STA = 2+59.39
 P.T. STA = 5+18.78

TEMP. DETOUR DRAINAGE STRUCTURE
 6'X6' DOUBLE BOX CULVERT
 STA. 1014+67.86, 62.0' LT
 $L = 44.00'$, SKEW = 22.86°

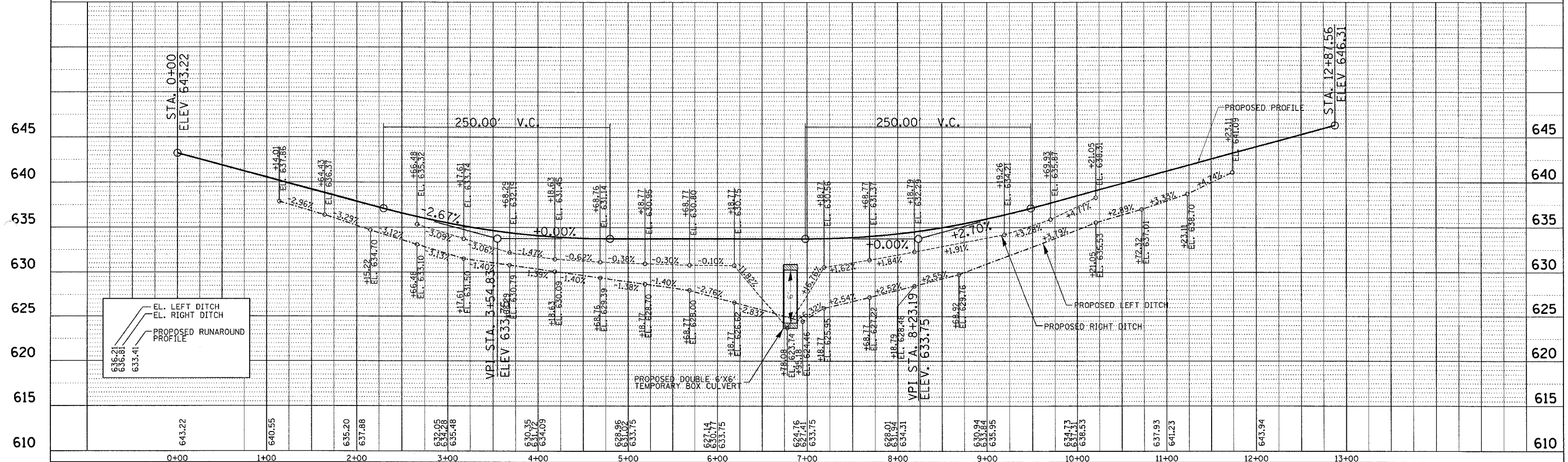
INSTALLATION AND REMOVAL SHALL BE INCLUDED IN THE TEMPORARY DETOUR DRAINAGE STRUCTURE PAY ITEM. SHOULD COMPLY WITH AASHTO M273

PROP. CURVE RUNA1
 PI STA. = 8+99.10
 $\Delta = 13^\circ 45' 40''$ (RT)
 $D = 5^\circ 18' 19''$
 $R = 1,080.00'$
 $T = 130.32'$
 $L = 259.39'$
 $E = 7.83'$
 $e = \text{---}$
 T.R. = ---
 S.E. RUN = ---
 P.C. STA = 7+68.78
 P.T. STA = 10+28.17

PROP. CURVE RUNA2
 PI STA. = 11+58.49
 $\Delta = 13^\circ 45' 40''$ (LT)
 $D = 5^\circ 18' 19''$
 $R = 1,080.00'$
 $T = 130.32'$
 $L = 259.39'$
 $E = 7.83'$
 $e = \text{---}$
 T.R. = ---
 S.E. RUN = ---
 P.C. STA = 10+28.17
 P.T. STA = 12+87.56



PLAN	DATE
SURVEYED	BY
ALIGNED	CHECKED
NOTE BOOK	NO. OF WAY CHECKED
NO.	NO.



PROPOSED DETOUR RUN-AROUND