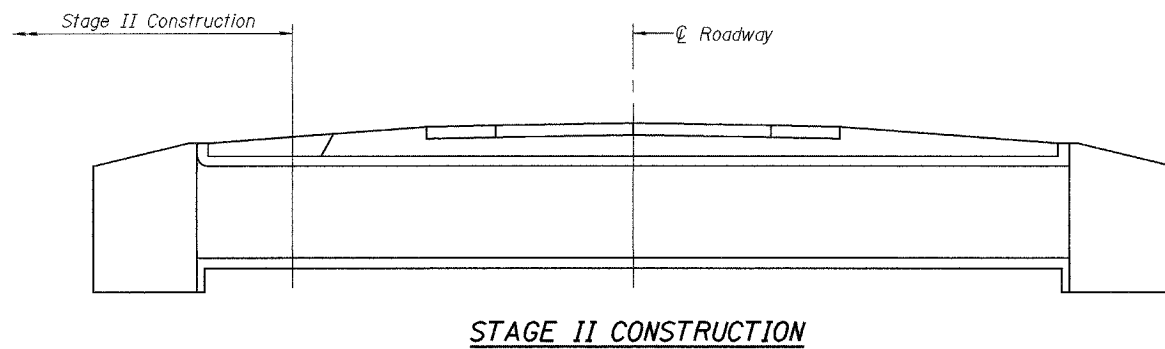
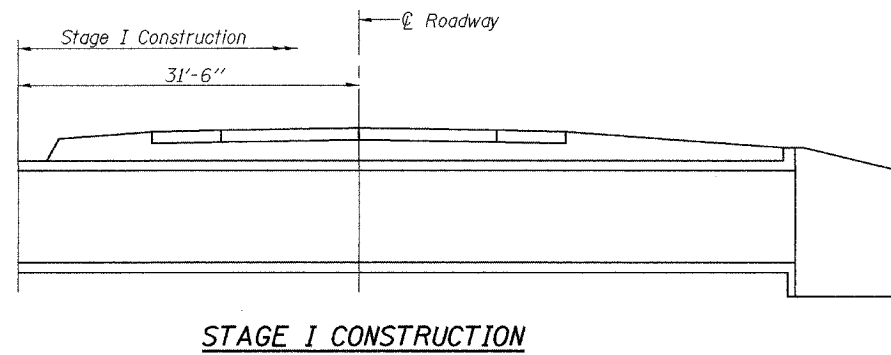
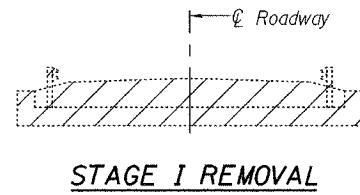


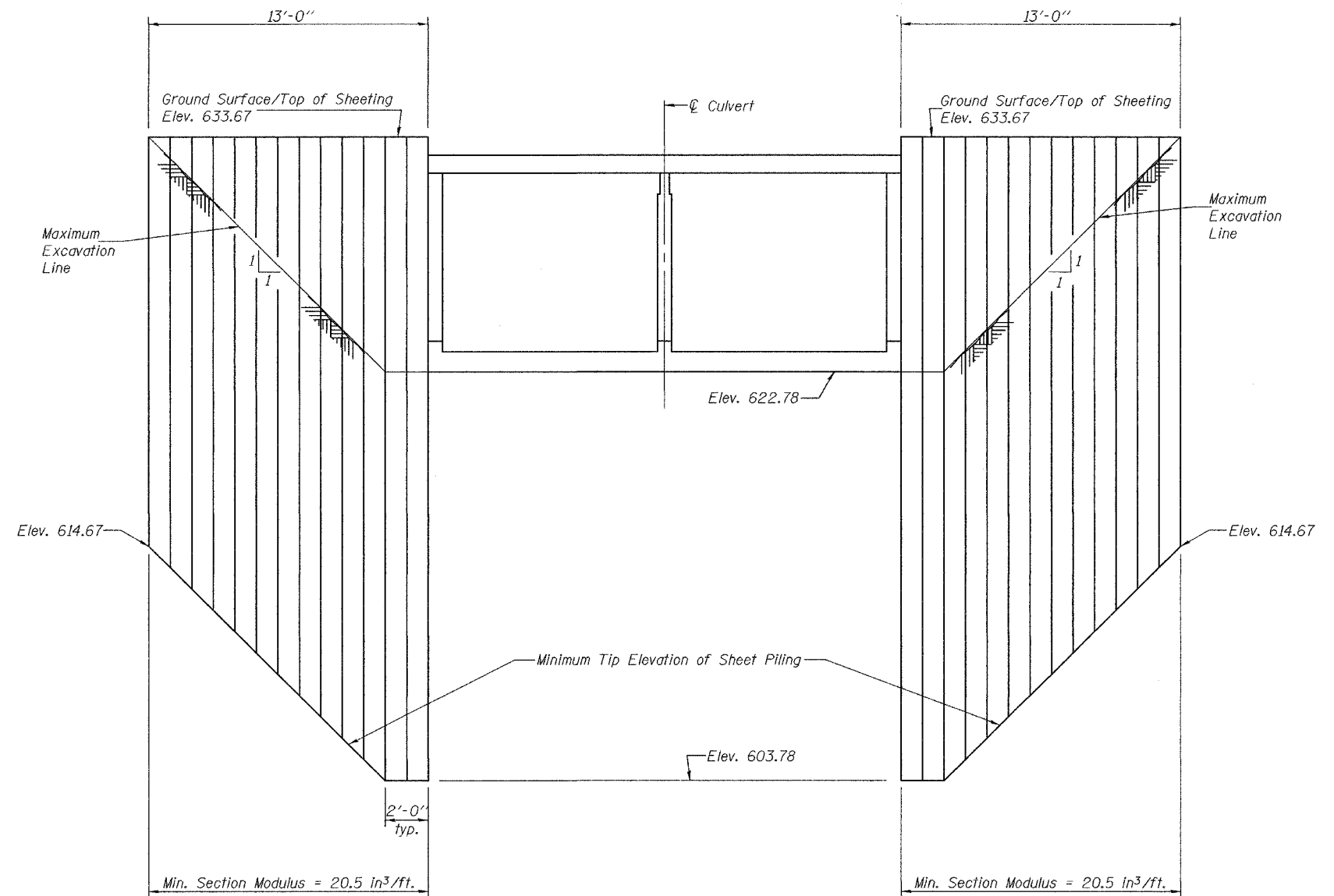
STATE OF ILLINOIS
DEPARTMENT OF TRANSPORTATION

ROUTE NO.	SECTION	COUNTY	SHEET NO.	SHEET	SHEET NO.
FAP 618	33(EXT) BR	McDONOUGH	63	21	7 SHEETS
FED. ROAD DIST. NO. 7	ALIGNMENT	FED. AID PROJECT-			

Contract No. 68266



Note:
All sections are looking South.
Hatched area indicates Removal of Existing Structures.



Note:
If the Contractor chooses to alter the temporary cantilevered sheet piling design requirements shown on the plans, a design submittal including plan details and calculations will be required for review and acceptance by the Engineer.

DESIGNED	Stephen M. Ryan
CHECKED	SEM
DRAWN	BECKY M. CURRY
CHECKED	SMR & SEM

September 10, 2004
EXAMINED *Thomas J. Domagalak*
ENGINEER OF BRIDGE DESIGN
PASSED *Ralph E. Anderson*
ENGINEER OF BRIDGES AND STRUCTURES

STAGE CONSTRUCTION DETAILS
F.A.P. ROUTE 618 - SECTION 33(EXT)BR
McDONOUGH COUNTY
STATION 1014+55.00
STRUCTURE NO. 055-2005