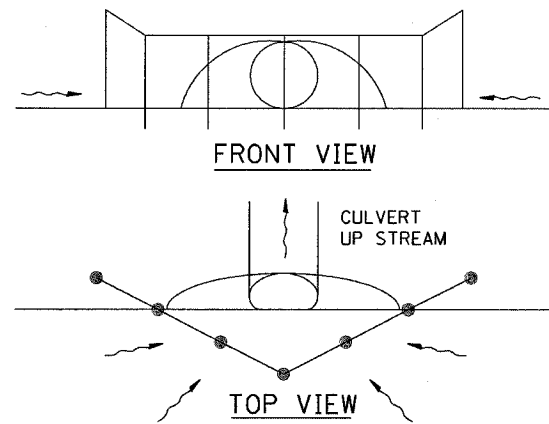
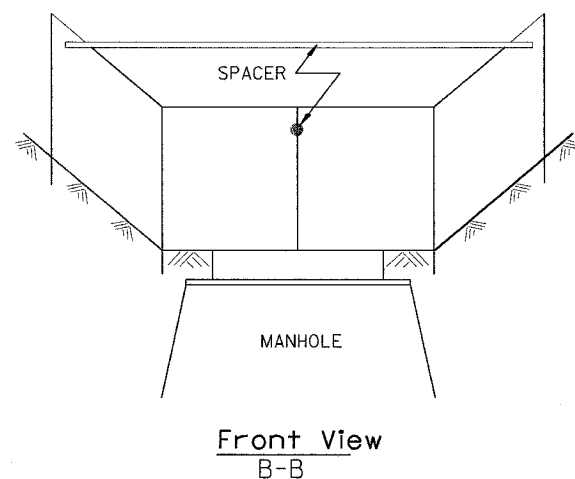
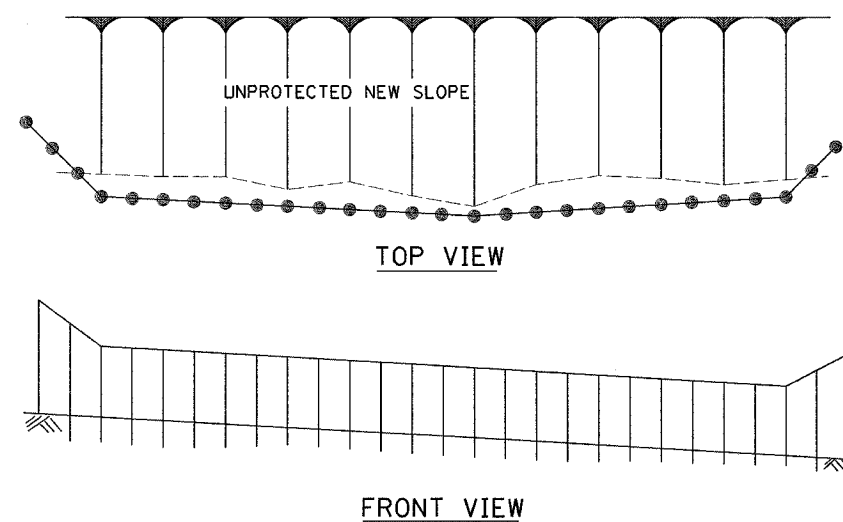
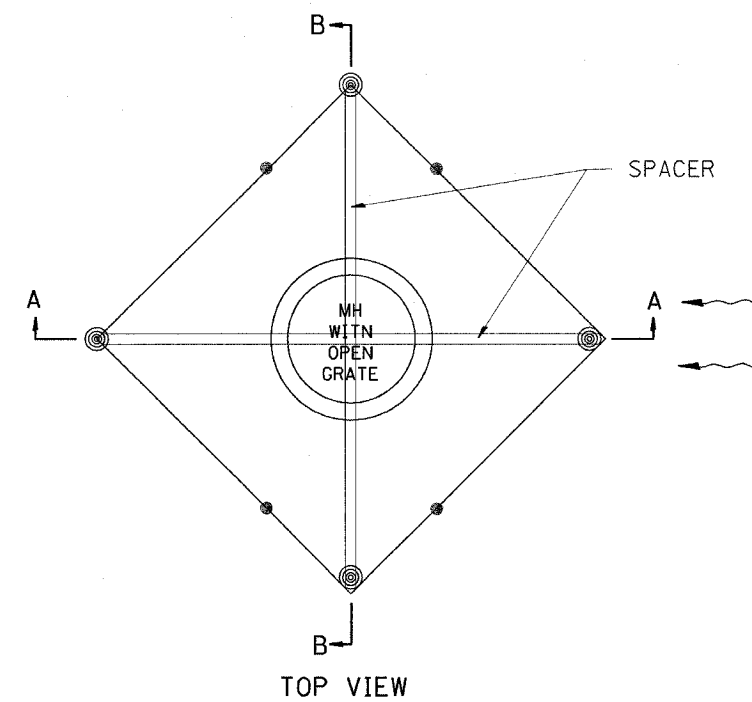
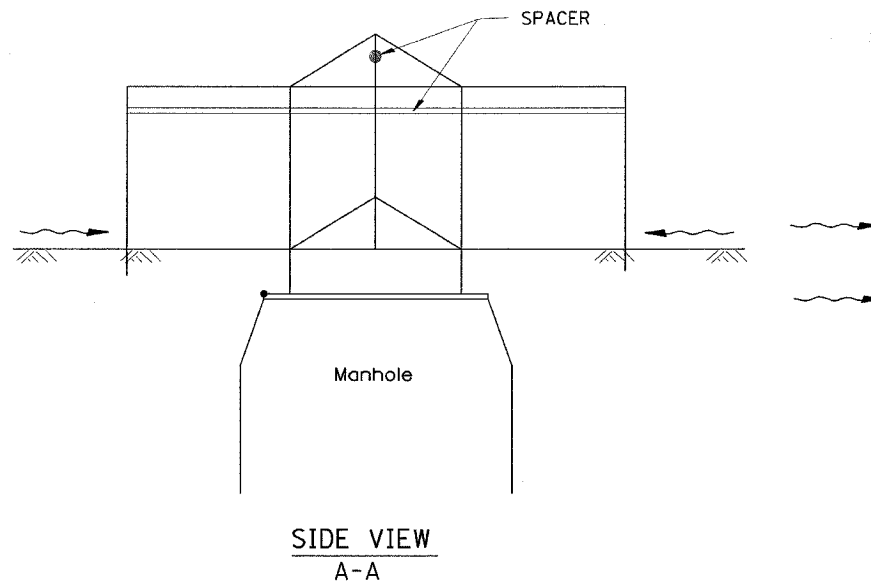


68266

F.A. RTE.	SECTION	COUNTY	TOTAL SHEETS	SHEET NO.
618	33(EXT) BR	MCDONOUGH	63	27-A
STA.		TO STA.		
FED. ROAD DIST. NO.	ILLINOIS	FED. AID PROJECT		



UPSTREAM PIPE CULVERT EROSION CONTROL



EROSION CONTROL AT OPEN GRATE MAN HOLE

**GENERAL NOTES:**

1. This work shall be performed in accordance with Sections 280 & 1081, of the Standard Specifications.
2. Additional Timber or Metal Post shall be Installed, as needed.

All dimensions are in millimeters (Inches) unless otherwise noted.

DATE	REVISIONS	BY
1-1-97	RENUM. A-12.05, NEW REVISION BOX	T.P.
3-11-03	ELIMINATED SILT FENCE DITCH CHECK	M.M.A.

ILLINOIS DEPARTMENT OF TRANSPORTATION  
**SPECIAL DETAIL SHEET**  
**TYPICAL APPLICATION OF SILT FILTER FENCE**  
 CADD DETAIL 280001-D4 DRAWN BY CADD  
 SCALE: NOT DRAWN TO SCALE CHECKED BY

Designer NOTES:  
 1. Designer to modify this Special Detail sheet, as needed, for inclusion in plans.  
 2. Include Highway Standard 280001 "TEMPORARY EROSION CONTROL SYSTEM."

8/19/2004