

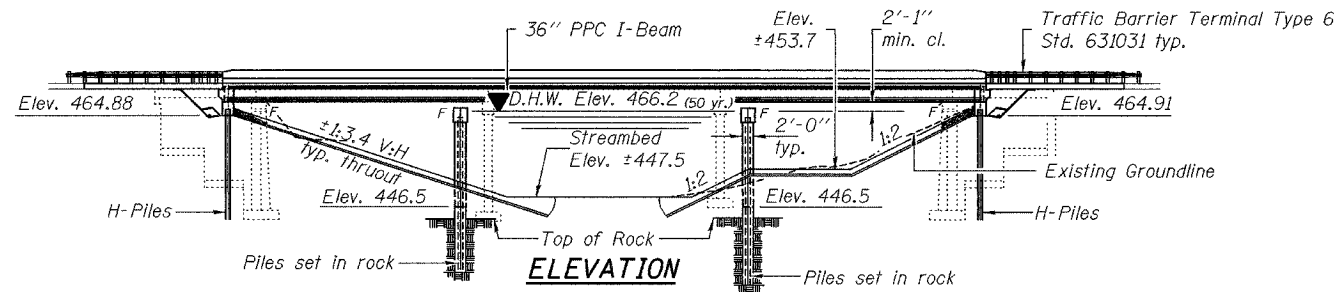
Bench Mark: 4628-43 Chiseled Square on the Northwest wingwall S.N. 012-0016. Station 594+84.40 Rt. 16.7' Elevation = 468.75'.

STATE OF ILLINOIS DEPARTMENT OF TRANSPORTATION

Table with columns: ROUTE NO., SECTION, COUNTY, DISTRICT, SHEET NO., SHEET NO. 1, 20 SHEETS. Includes project details like FAP 332, CLARK, 15, and Contract No. 70218.

Existing Structure: S.N. 012-0016 was built in 1924 under S.B.I. Rte. 1, Section 24 B & C-1 at Sta. 595+94. In 1971 the bridge was widened, the superstructure was replaced with 3 simple span PPC deck beams and 2 new piers were added under S.B.I. Rte. 1, Section 24BR at Sta. 595+94.

No salvage



INDEX OF SHEETS

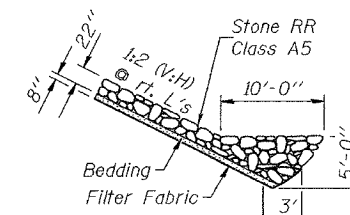
- 1. General Plan
2. Stage Construction Details
3. Temporary Concrete Barrier
4.-5. Top of Slab Elevations
6.-7. Superstructure Details
8.-9. Diaphragm Details
10. Drainage Scupper, DS-11
11. Framing Plan
12.-13. Beam Details
14. Anchor Bolt Details
15. North Abutment
16. South Abutment
17. Pier 1
18. Pier 2
19. Bar Splicer Assembly Details
20. Boring Logs

GENERAL NOTES

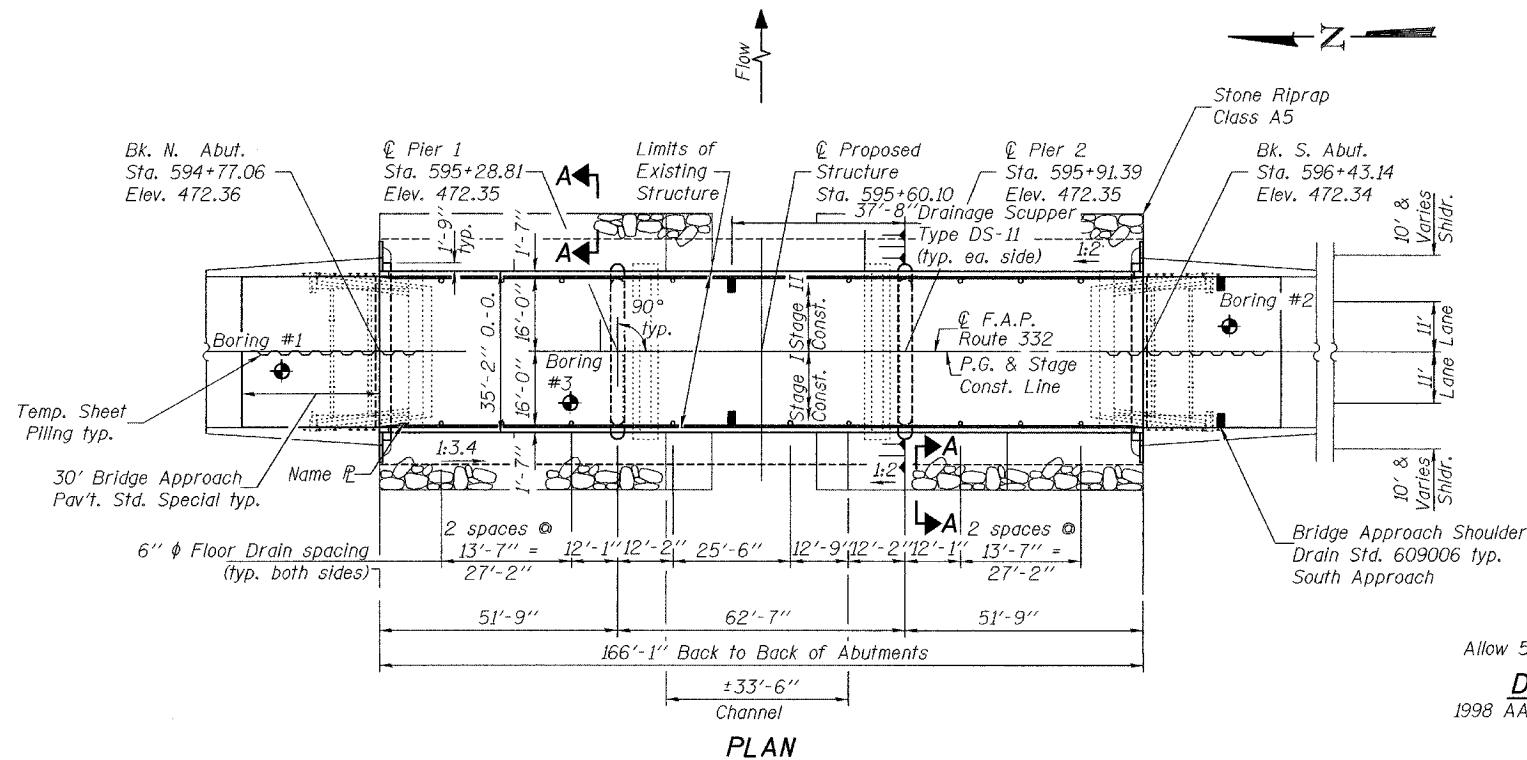
Layout of slope protection system may be varied in the field to suit ground conditions as directed by the Engineer. All construction joints shall be bonded. Excavation behind existing abutment walls shall be done before removing the existing superstructure.

TOTAL BILL OF MATERIAL

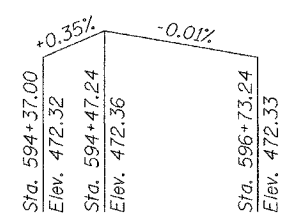
Table with columns: ITEM, UNIT, SUPER, SUB, TOTAL. Lists materials like 'Removal of Existing Structures', 'Structure Excavation', 'Concrete Structures', etc.



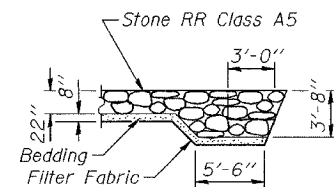
STONE RIPRAP ANCHOR DETAIL



PLAN



PROFILE GRADE (along centerline roadway)



SECTION A-A

STATION 595+60.10 BUILT 20 BY STATE OF ILLINOIS F.A.P. ROUTE 332 - SEC. (24BR-1)BR

LOADING HL-93 STR. NO. 012-0071 NAME PLATE See Std. 515001

WATERWAY INFORMATION

Table with columns: Flood, Freq. Yr., Q C.F.S., Opening Sq. Ft., Nat. Head - Ft., Headwater El. Includes data for existing and proposed conditions.

LOADING HL-93

Allow 50#/sq. ft. for future wearing surface.

DESIGN SPECIFICATIONS

1998 AASHTO LRFD Bridge Design Specifications with 1999 thru 2003 Interims

DESIGN STRESSES

FIELD UNITS

f'c = 3,500 psi fy = 60,000 psi (reinforcement)

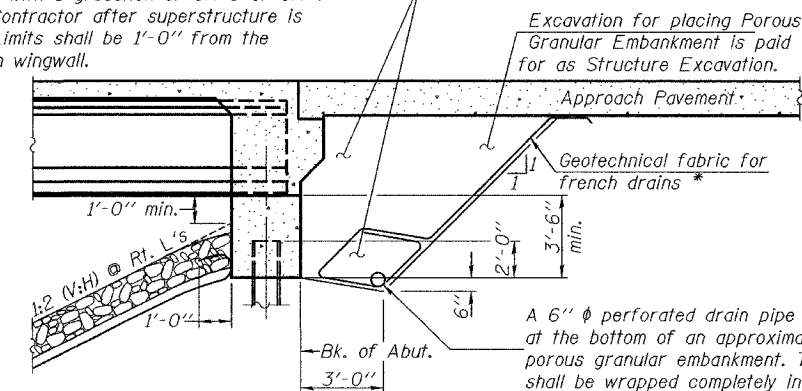
PRECAST PRESTRESSED UNITS

f'c = 6,000 psi f'ci = 5,000 psi fs = 270,000 psi (1/2\"/>

SEISMIC DATA

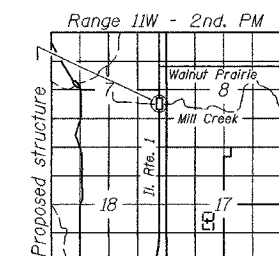
Seismic Performance Zone (SPZ) = 1 Bedrock Acceleration Coefficient (A) = 7.4%g Site Coefficient (S) = 1.5

Backfill with uncompacted porous granular embankment with a gradation of CA-5 or CA-7 by Bridge Contractor after superstructure is in place.



SECTION THRU INTEGRAL ABUTMENT

(Horiz. dim. @ Rt. L's)



LOCATION SKETCH

GENERAL PLAN ILLINOIS ROUTE 1 OVER MILL CREEK F.A.P. ROUTE 332 - SEC. (24BR-1)BR CLARK COUNTY STATION 595+60.10 STRUCTURE NO. 012-0071

DESIGNED [Signature] CHECKED SJB/SMR DRAWN BECKY M. CURRY CHECKED CCC SMR

EXAMINED [Signature] ENGINEER OF BRIDGE DESIGN PASSED [Signature] ENGINEER OF BRIDGES AND STRUCTURES

EXPIRES 11-30-2006