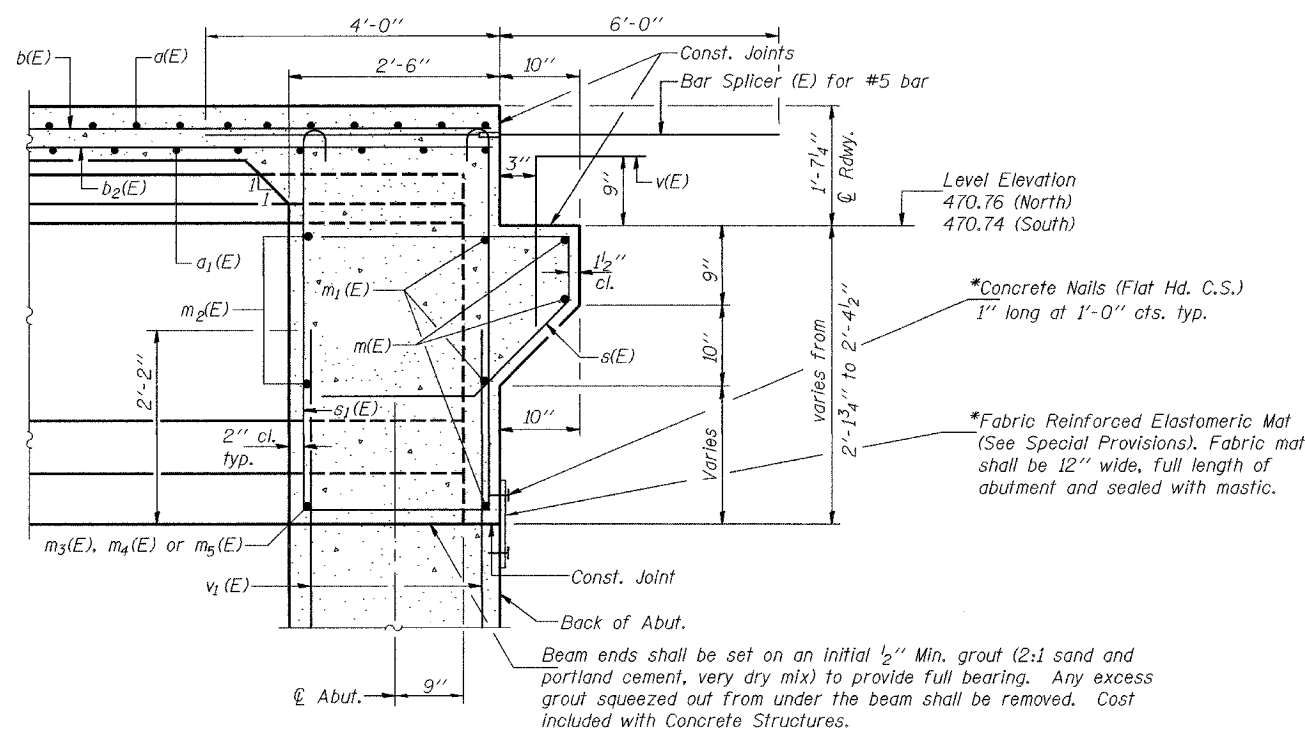


STATE OF ILLINOIS
DEPARTMENT OF TRANSPORTATION

ROUTE NO.	SECTION	COUNTY	DISTRICT	SHEET	SHEET NO.
FAP 332	(24BR-1)BR	CLARK		23	20 SHEETS
FED. ROAD DIST. NO. 7	ILLINOIS	FED. AID PROJECT			

Contract No. 70218

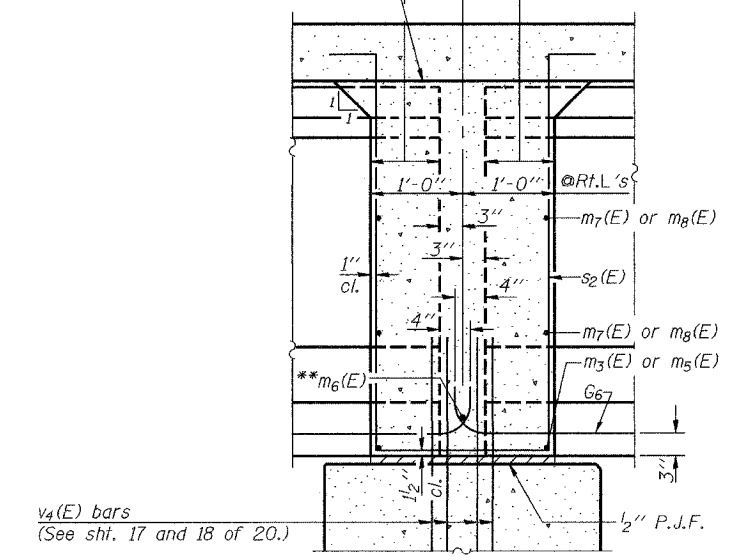


SECTION A-A

*Cost included with Concrete Structures.

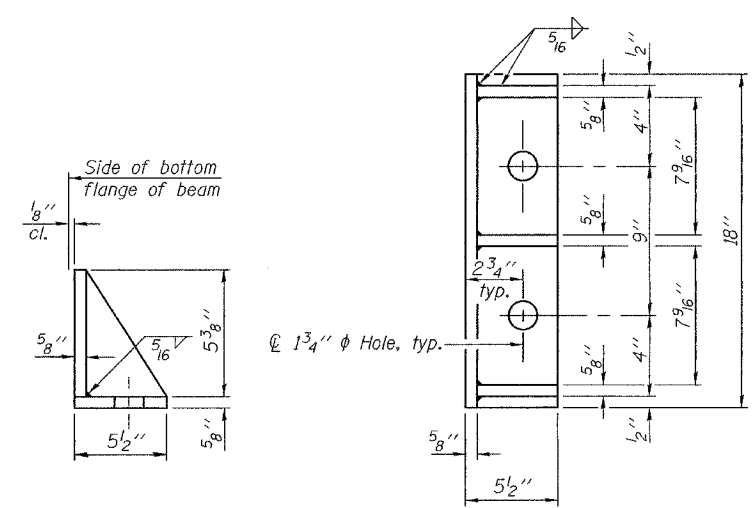
Pour diaphragm flush with bott. of slab. Concrete in slab above this line shall be placed not less than 45 min. nor more than 90 min. after diaphragm has been poured.

Roofing felt shall be bonded to side of beam embedded into diaphragm.



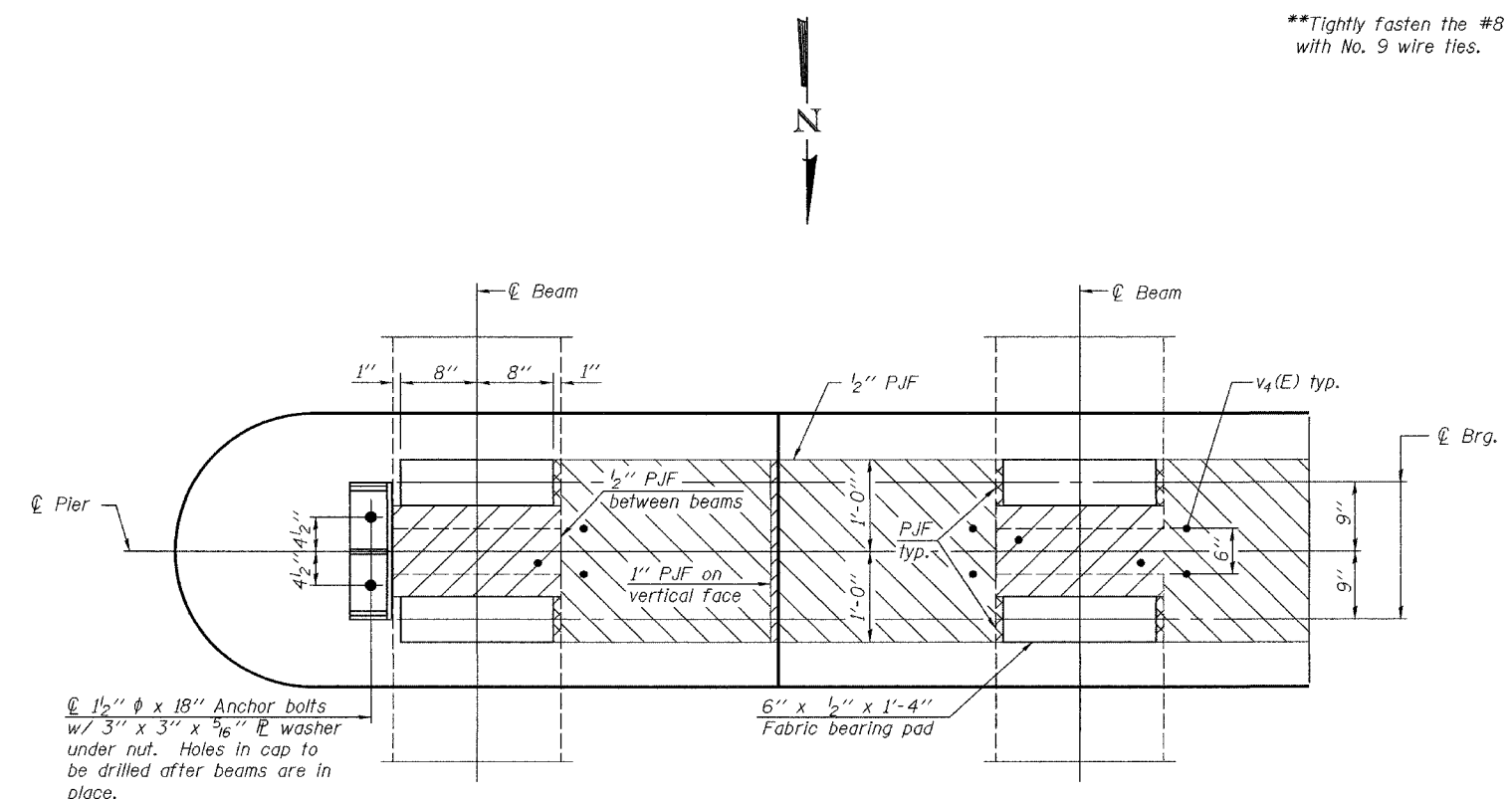
SECTION B-B
AT PIER

**Tightly fasten the #8 bars together with No. 9 wire ties.



SIDE RETAINER

Equivalent rolled angle with stiffeners will be allowed in lieu of welded plates.



PLAN AT PIER

(Showing bearing pad and P.J.F. details)

Notes:
Reinforcement bars in diaphragm are billed with superstructure on sheet 7 of 20.
Concrete in diaphragm is included with Concrete Superstructure on sheet 7 of 20.
For details of bars s(E), s1(E) and s2(E) see sheet 7 of 20.
The s(E), s1(E) and s2(E) bars shall be placed parallel to the beams. Spacing for these bars shall be at right angles to the beams.
See sheet 8 of 20 for location of Sections A-A and B-B.
Cost of 90 Lb. roofing felt is included with Concrete Superstructure.
The side retainer shall be galvanized after shop fabrication according to AASHTO M 111 and ASTM A 385. Cost of side retainer and anchor bolts shall be included with Concrete Structures.
See sheet 14 of 20 for anchor bolt details.

DIAPHRAGM DETAILS
F.A.P. ROUTE 332 - SEC. (24BR-1)BR
CLARK COUNTY
STATION 595+60.10
STRUCTURE NO. 012-0071

DESIGNED	CCC
CHECKED	SJB & SMR
DRAWN	BECKY M. CURRY
CHECKED	CCC & SMR

December 8, 2004
EXAMINED *Thomas J. Damagala*
ENGINEER OF BRIDGE DESIGN
PASSED *Ralph E. Anderson*
ENGINEER OF BRIDGES AND STRUCTURES