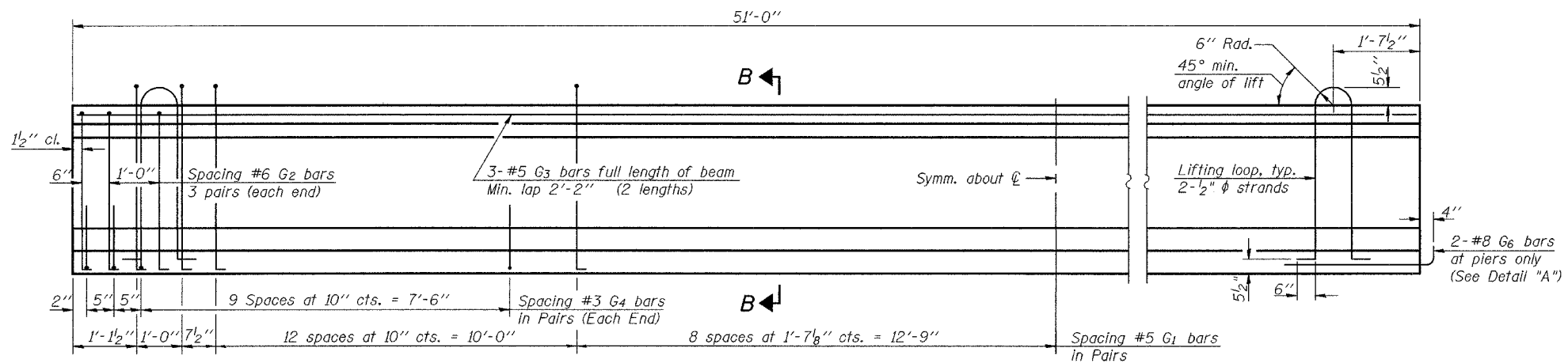


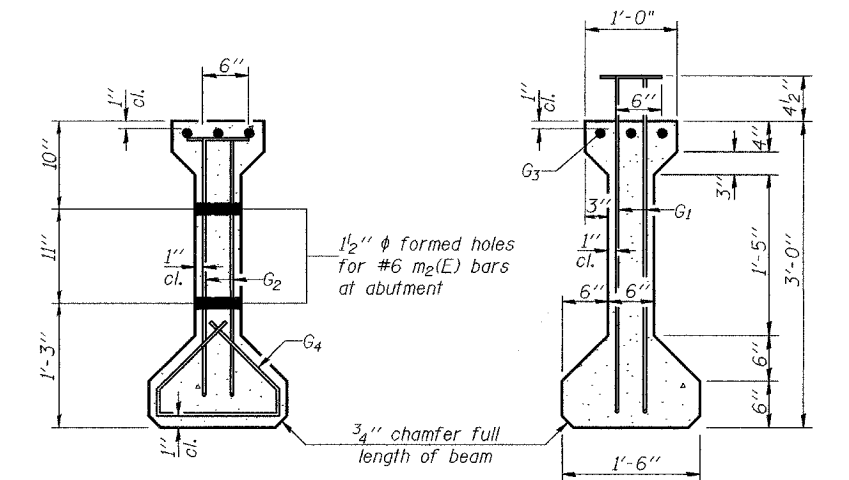
STATE OF ILLINOIS  
DEPARTMENT OF TRANSPORTATION

ROUTE NO.	SECTION	COUNTY	JOB NO.	SHEET	SHEET NO.
FAP 332	(24BR-1)BR	CLARK		26	20 SHEETS
FED. ROAD DIST. NO. 7	ILLINOIS	FED. AID PROJECT			

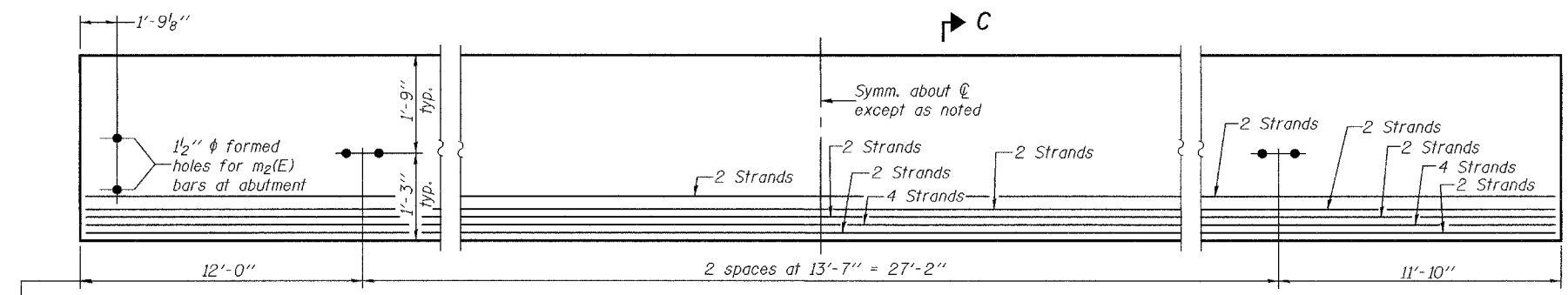
Contract No. 70218



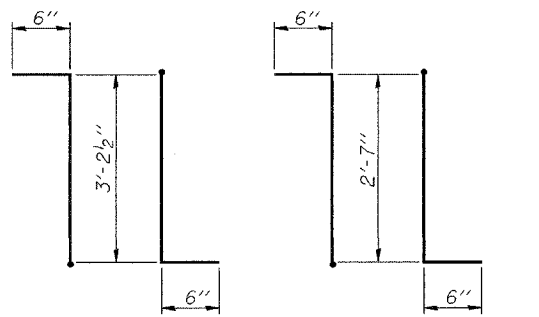
**ELEVATION OF BEAM**  
(Showing Reinforcement & Dimensions)



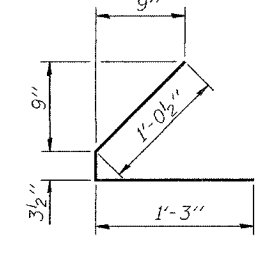
**SECTION A-A**      **SECTION B-B**



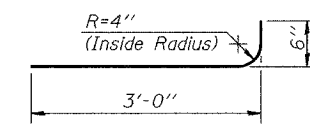
**ELEVATION OF BEAM**  
(Showing Prestressing Steel)



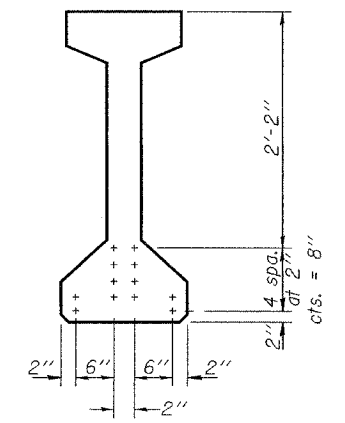
**BAR G1**      **BAR G2**



**BAR G4**



**BAR G6**



**SECTION C-C**

**\*BAR LIST**

Bar	No.	Size	Length	Shape
G1	45	#5	4'-2 1/2"	TL
G2	12	#6	3'-7"	TL
G3	6	#5	26'-7"	
G4	24	#3	2'-7"	
G6	2	#8	3'-6"	

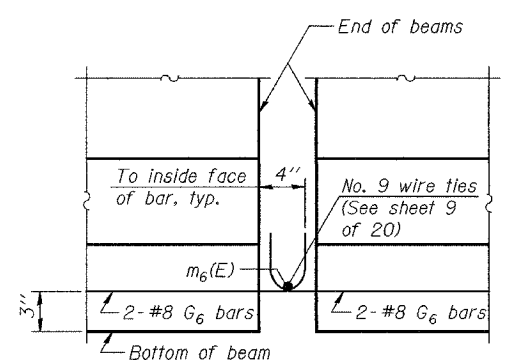
\*For one beam only.

**BILL OF MATERIAL**

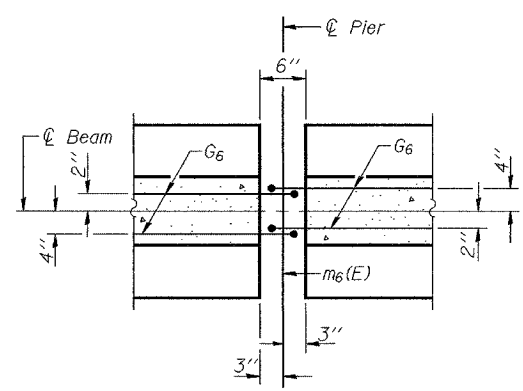
Item	Unit	Total
Furnishing and Erecting Precast Prestressed Concrete I-Beams, 36"	Ft.	612

**NOTES**

Inserts for 3/4"  $\phi$  threaded dowel rods are to be two strut, coil type for interior I-Beams and single coil, flared loop type for exterior I-Beams.  
Prestressing steel shall be uncoated high strength, low relaxation 7-wire strand, Grade 270.  
The nominal diameter shall be 1/2" and the nominal cross-sectional area shall be 0.153 sq. in.  
Non-prestressing steel shall conform to AASHTO designation M-31 or M-322 Grade 60.  
Lifting loops shall be 2 - 1/2"  $\phi$  -270 ksi strands, as shown.  
Required release strength,  $f'_{ci}$ , shall be 5000 psi.  
Reinforcement bars designated (E) shall be epoxy coated.



**ELEVATION**



**PLAN**

**DETAIL "A"**

DESIGNED	CCC
CHECKED	SJB & SMR
DRAWN	BECKY M. CURRY
CHECKED	CCC & SMR

EXAMINED	December 8, 2004
PASSED	Thomas J. Damagala ENGINEER OF BRIDGE DESIGN
	Ralph E. Anderson ENGINEER OF BRIDGES AND STRUCTURES

**BEAM DETAILS (SPANS 1 & 3)**  
**F.A.P. ROUTE 332 - SEC. (24BR-1)BR**  
**CLARK COUNTY**  
**STATION 595+60.10**  
**STRUCTURE NO. 012-0071**