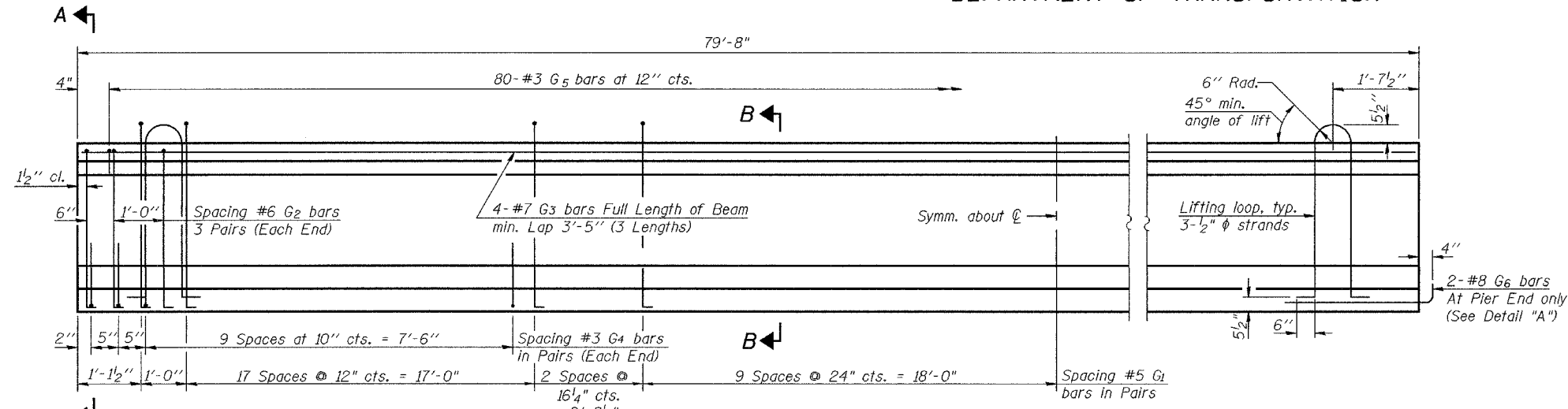
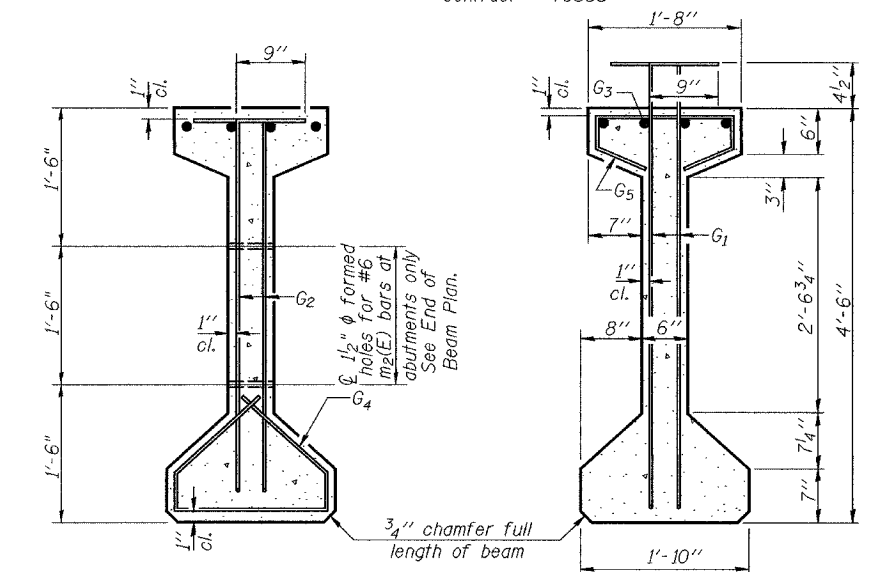


STATE OF ILLINOIS
DEPARTMENT OF TRANSPORTATION

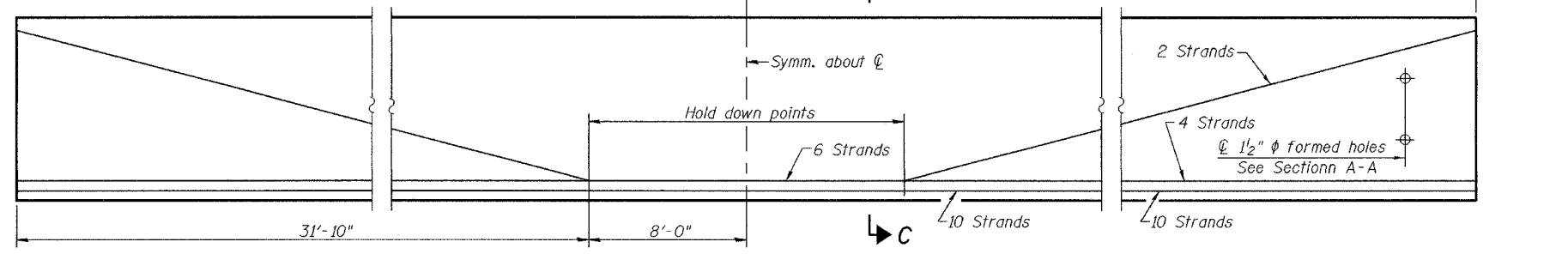
ROUTE NO.	SECTION	COUNTY	PROJECT	SHEET
FAP 836	(119BR) BR	CHAMPAIGN		23
SHEET NO. 12 21 SHEETS				
FED. ROAD DIST. NO. 7	BUILDING	FED. AID PROJECT		
Contract # 70355				



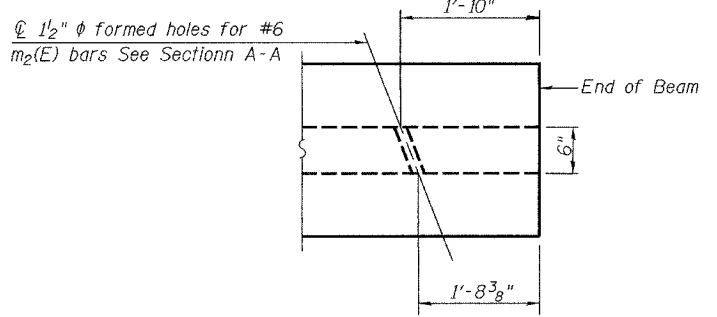
ELEVATION OF BEAM
(Showing Reinforcement & Dimensions)



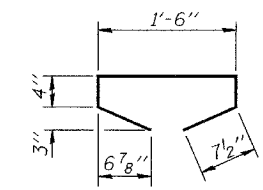
SECTION A-A **SECTION B-B**



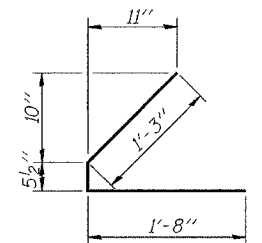
ELEVATION OF BEAM
(Showing Prestressing Steel)



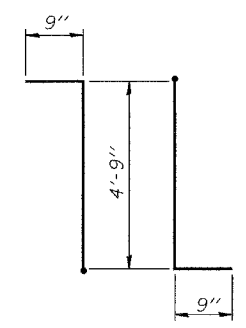
END OF BEAM PLAN
(At Abutments)



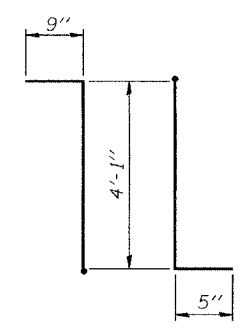
BAR G5



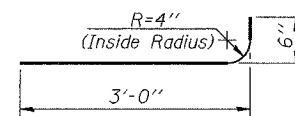
BAR G4



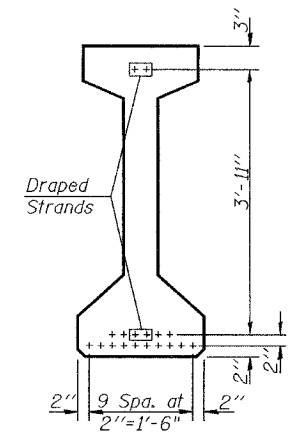
BAR G1



BAR G2



BAR G6



SECTION C-C

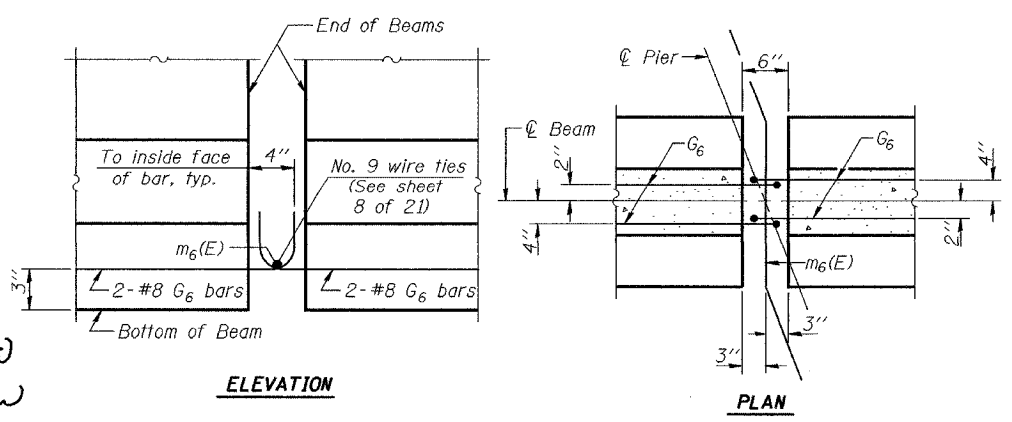
***BAR LIST**

Bar	No.	Size	Length	Shape
G1	118	#5	6'-3"	TL
G2	12	#6	5'-3"	TL
G3	12	#7	28'-9"	—
G4	48	#3	3'-4 1/2"	—
G5	80	#3	3'-5"	—
G6	2	#8	3'-6"	U

*For one beam only.

BILL OF MATERIAL

Item	Unit	Total
Furnishing and Erecting Precast Prestressed Concrete I-Beams, 54"	Ft.	478



ELEVATION

PLAN

DETAIL "A"

NOTES

Inserts for 3/4" diameter threaded dowel rods are to be two strut, coil type for interior I-Beams and single coil, flared loop type for exterior I-Beams. Prestressing steel shall be uncoated high strength, low relaxation 7-wire strand, Grade 270. The nominal diameter shall be 1/2" and the nominal cross-sectional area shall be 0.153 sq. in. Non-prestressing steel shall conform to AASHTO designation M-31 or M322 Grade 60. Lifting loops shall be 3-1/2" diameter 270 ksi strands, as shown. Required release strength, f'cl, shall be 5,000 psi. Reinforcement bars designated (E) shall be epoxy coated.

DESIGNED	Philip E. Coppernoll
CHECKED	Ray Ahanchi
DRAWN	R. Sommer
CHECKED	P.E.C./G.R.A.

EXAMINED	December 1, 2004	Thomas J. Domagalki
PASSED		Ralph E. Anderson

PI-4-54 9-1-03

BEAM DETAILS (SPAN 4)
F.A.P. RT. 836-SECTION (119BR)BR
CHAMPAIGN COUNTY
STATION 1015+21.00
STRUCTURE NO. 010-0280