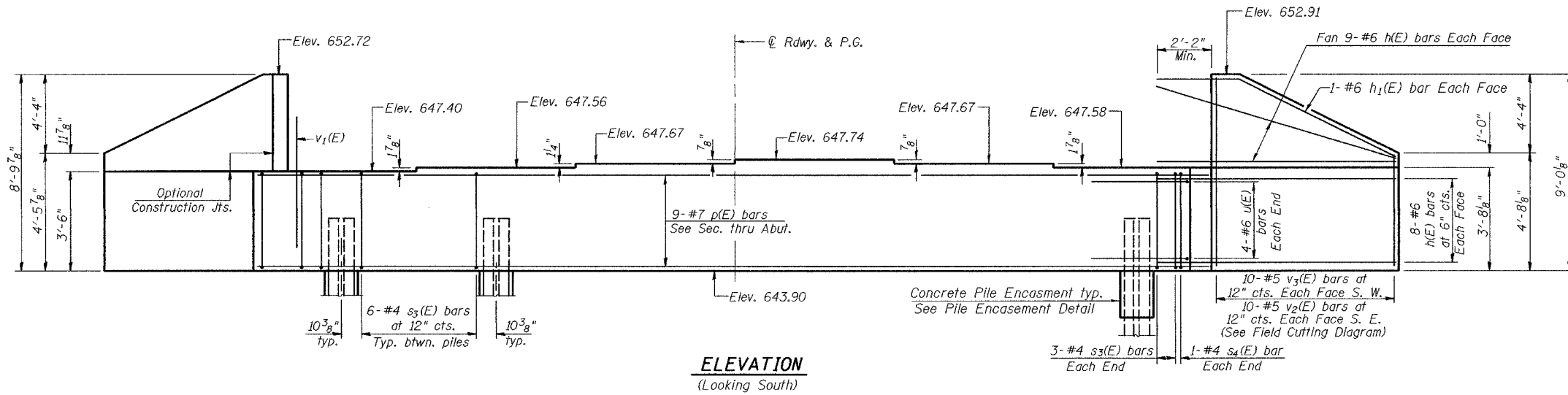
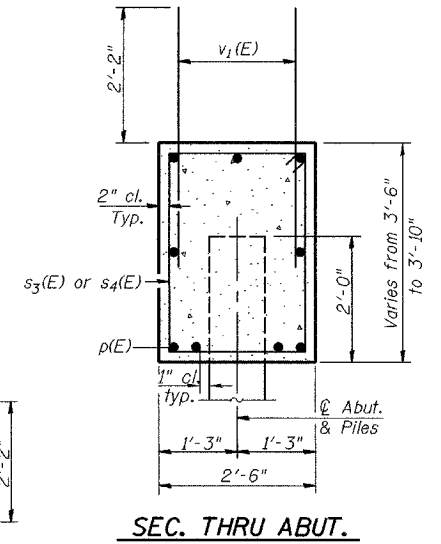


STATE OF ILLINOIS  
DEPARTMENT OF TRANSPORTATION

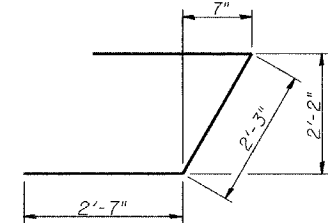
ROUTE NO.	SECTION	COUNTY	PROJECT	SHEET	SHEET NO. 14
FAP 836	(119BR) BR	CHAMPAIGN		25	21 SHEETS
FED. ROAD DIST. NO. 7	ILLINOIS	FED. AID PROJECT	Contract # 70355		



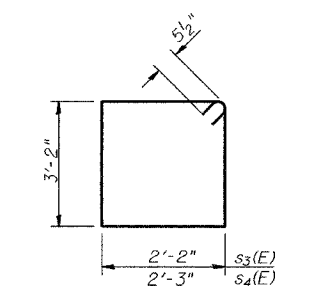
**ELEVATION**  
(Looking South)



**SEC. THRU ABUT.**



**BAR u(E)**



**BARS s3(E) & s4(E)**

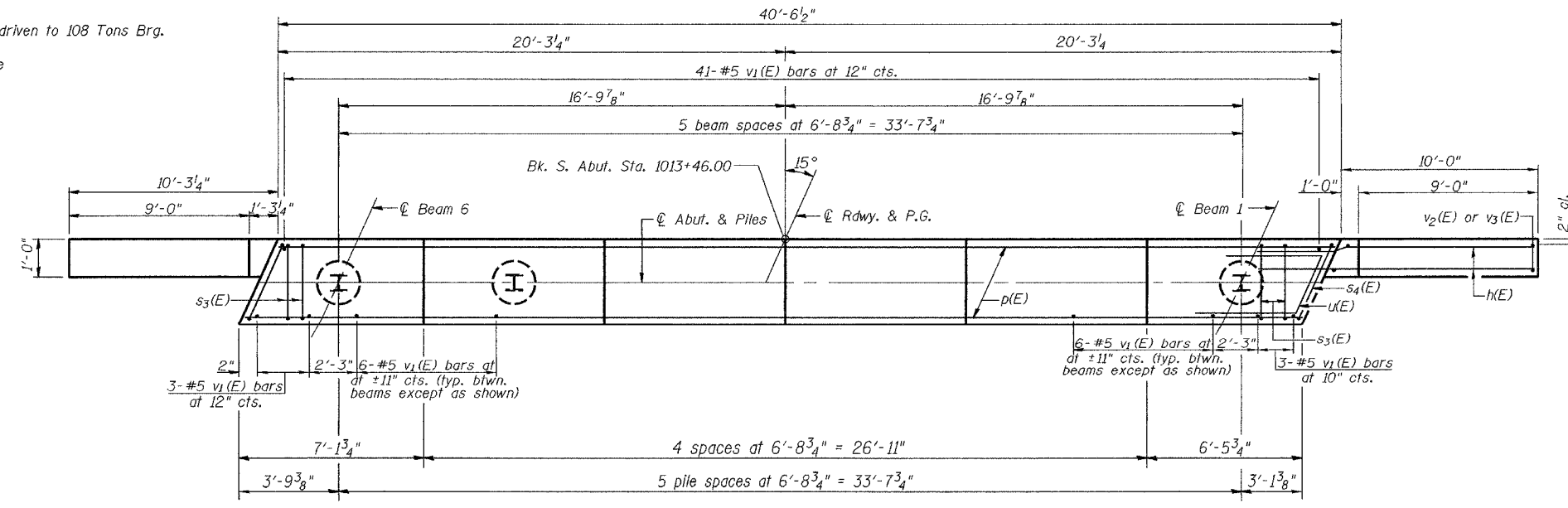
**BILL OF MATERIAL**

Bar	No.	Size	Length	Shape
h(E)	68	#6	13'-2"	—
h1(E)	4	#6	13'-2"	—
p(E)	9	#7	40'-2"	—
s3(E)	36	#4	11'-7"	□
s4(E)	2	#4	11'-9"	□
u(E)	8	#6	7'-5"	—
v1(E)	77	#5	4'-4"	—
v2(E)	10	#5	12'-6"	—
v3(E)	10	#5	12'-10"	—
Concrete Structures			Cu. Yd.	19.2
Reinforcement Bars Epoxy Coated			Pound	3160
Structure Excavation			Cu. Yd.	249
Furnishing Steel Piles HP 12x63			Foot	270
Driving Steel Piles			Foot	270
Test Pile HP 12x63			Each	1

Reinforcement bars designated (E) shall be epoxy coated.

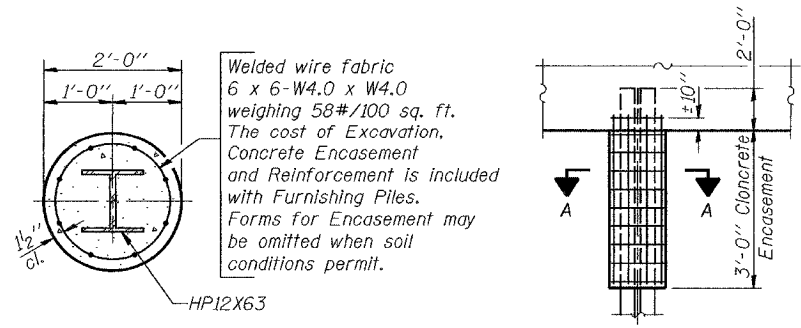
**PILE DATA**

Type: HP 12x 63  
Design Capacity: 72 Tons driven to 108 Tons Brg.  
Est. Length: 54 Ft.  
No. Required: 5+1 Test Pile

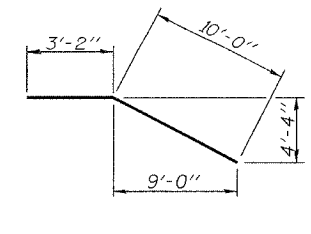


**PLAN**

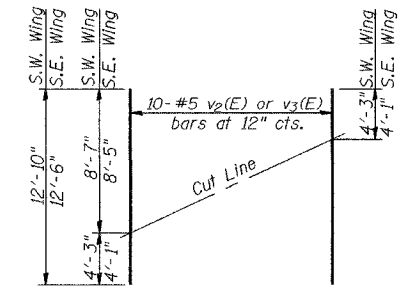
Notes: Pour steps monolithically with cap.  
Reinforcement bars designated (E) shall be epoxy coated.



**SECTION A-A**  
**PILE ENCASEMENT DETAIL**



**BAR h1(E)**



**FIELD CUTTING DIAGRAM**

Order v2(E) and v3(E) full length. Cut as shown and use remainder of bars in opposite face.

DESIGNED	Philip E. Coppernoll
CHECKED	Ray Ahanchi
DRAWN	R. Sommer
CHECKED	P.E.C./G.R.A.

EXAMINED	December 1, 2004	Thomas J. Demagala
PASSED		Ralph E. Anderson

**SOUTH ABUTMENT**  
**F.A.P. RT. 836-SECTION (119BR)BR**  
**CHAMPAIGN COUNTY**  
**STATION 1015+21.00**  
**STRUCTURE NO. 010-0280**