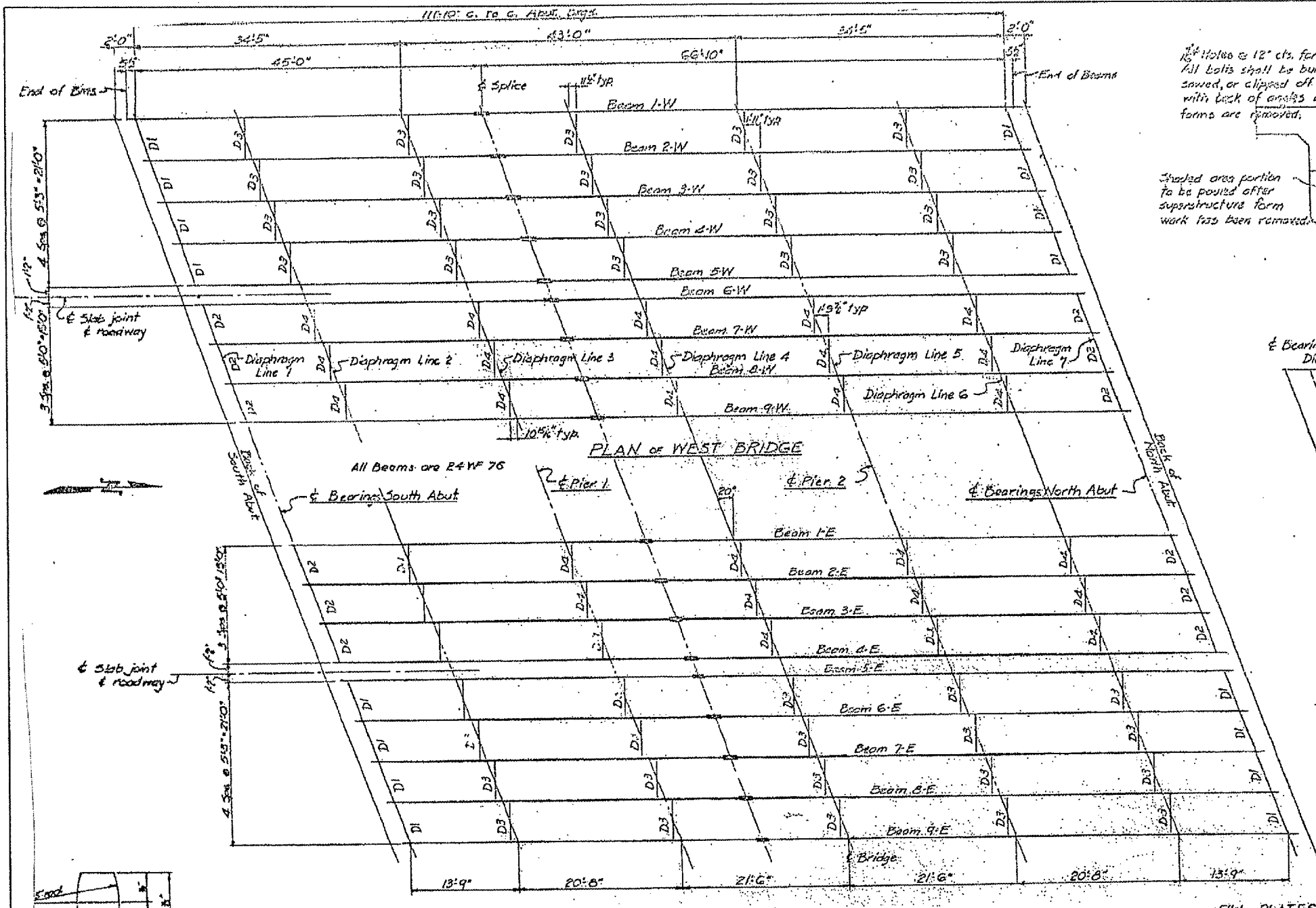
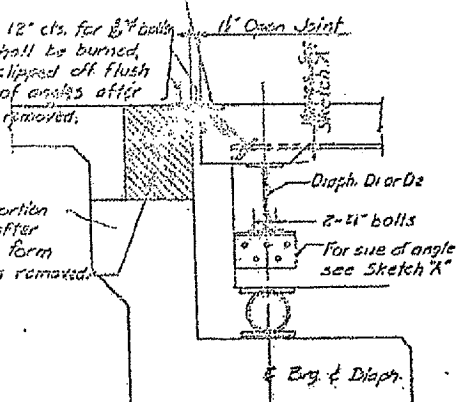


F.A. RTE.	SECTION	COUNTY	TOTAL SHEETS	SHEET NO.
*	**	CHAMPAIGN	25	13

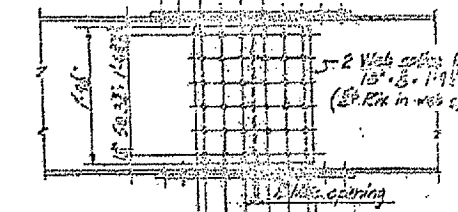
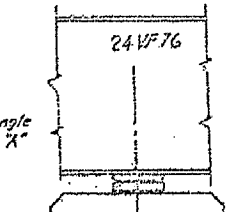


1/2" Holes @ 12" cts. for 3/4" bolts
All bolts shall be burned, sawed, or clipped off flush with back of angles after forms are removed.

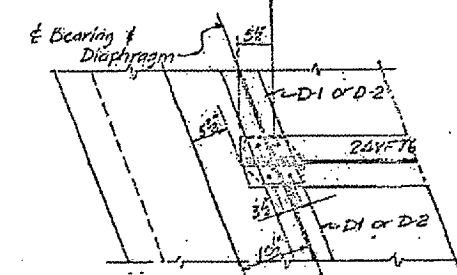
Shaded area portion to be painted after superstructure form work has been removed.



FIXED BEARING AT PIERS



Note: All rivet holes to be reamed with all parts assembled to groove and all parts match marked. See Special Note 5.



DETAILS AT ABUTMENTS

TABLE "A"

Diaph.	Diaphragms 1 & 2	Diaphragms 3, 4 & 5	Diaphragms 6 & 7	Diaphragms 8 & 9
1W-2W	2"	2"	2"	2"
2W-3W	2"	2"	2"	2"
3W-4W	3"	3"	3"	3"
4W-5W	3 1/2"	4 1/2"	4 1/2"	4 1/2"
5W-6W	4 1/2"	4 1/2"	4 1/2"	4 1/2"
6W-7W	4 1/2"	4 1/2"	4 1/2"	4 1/2"
7W-8W	4 1/2"	4 1/2"	4 1/2"	4 1/2"
8W-9W	4 1/2"	4 1/2"	4 1/2"	4 1/2"
1E-2E	3 1/2"	3 1/2"	3 1/2"	3 1/2"
2E-3E	3 1/2"	3 1/2"	3 1/2"	3 1/2"
3E-4E	4 1/2"	4 1/2"	4 1/2"	4 1/2"
4E-5E	4 1/2"	4 1/2"	4 1/2"	4 1/2"
5E-6E	4 1/2"	4 1/2"	4 1/2"	4 1/2"
6E-7E	4 1/2"	4 1/2"	4 1/2"	4 1/2"
7E-8E	4 1/2"	4 1/2"	4 1/2"	4 1/2"
8E-9E	4 1/2"	4 1/2"	4 1/2"	4 1/2"

TOP OF BEAM ELEVATIONS

Beam	Diaph. 1	Diaph. 2	Diaph. 3	Diaph. 4	Diaph. 5	Diaph. 6	Diaph. 7	Diaph. 8	Diaph. 9
1W	718.70	718.70	718.70	718.70	718.70	718.70	718.70	718.70	718.70
2W	718.70	718.70	718.70	718.70	718.70	718.70	718.70	718.70	718.70
3W	718.70	718.70	718.70	718.70	718.70	718.70	718.70	718.70	718.70
4W	718.70	718.70	718.70	718.70	718.70	718.70	718.70	718.70	718.70
5W	718.70	718.70	718.70	718.70	718.70	718.70	718.70	718.70	718.70
6W	718.70	718.70	718.70	718.70	718.70	718.70	718.70	718.70	718.70
7W	718.70	718.70	718.70	718.70	718.70	718.70	718.70	718.70	718.70
8W	718.70	718.70	718.70	718.70	718.70	718.70	718.70	718.70	718.70
9W	718.70	718.70	718.70	718.70	718.70	718.70	718.70	718.70	718.70

FILL PLATES

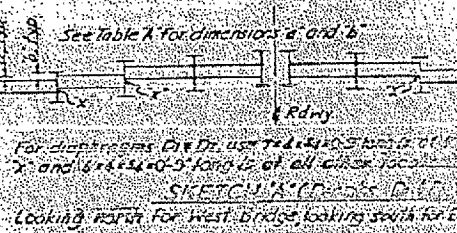
Beam	N&S Flange	Pier 1 & 2
1W	12" x 1/2" x 10'	9" x 1/2" x 10'
2W	12" x 1/2" x 10'	9" x 1/2" x 10'
3W	12" x 1/2" x 10'	9" x 1/2" x 10'
4W	12" x 1/2" x 10'	9" x 1/2" x 10'
5W	12" x 1/2" x 10'	9" x 1/2" x 10'
6W	12" x 1/2" x 10'	9" x 1/2" x 10'
7W	12" x 1/2" x 10'	9" x 1/2" x 10'
8W	12" x 1/2" x 10'	9" x 1/2" x 10'
9W	12" x 1/2" x 10'	9" x 1/2" x 10'

Note: No fill plates required at other bearing locations.

- SPECIAL NOTES:**
- High strength steel bolts may be substituted for field rivets in accordance with Art. 54-901 of the Standard Specifications.
 - Beams are not to be cambered for dead load deflection, but advantage of natural camber to be taken.
 - All beams are on a constant grade of 0.2%.
 - Anchor bolts shall be set before riveting diaphragms over piers and abutments. See Article 54-9(f) for setting of masonry bearing plates and anchor bolts.
 - All rockers, bearing plates, lead plates, and bolts, piles and washers shall be torqued, pointed and set in accordance with Article and are included for payment as Structural Steel.
 - The expansion joint shall be located over roadway. All surfaces accessible after erection shall receive two shop coats of red lead or equal the studs. The studs shall not be painted. The expansion joints are included for payment as Structural Steel.

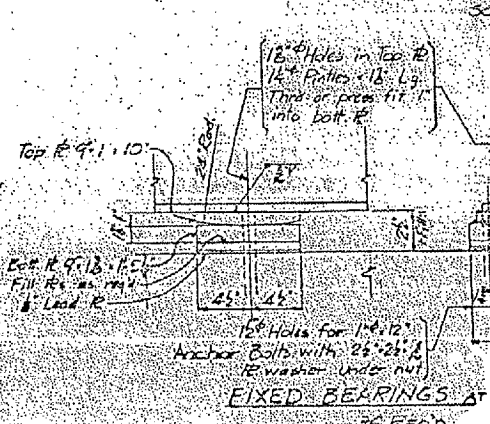
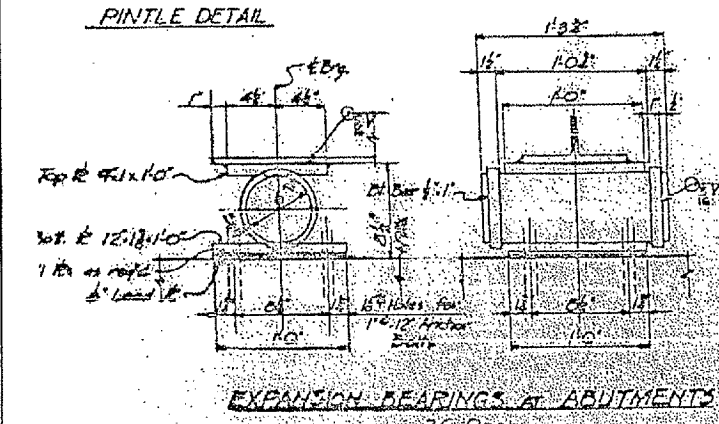
BILL OF MATERIAL (2)

ITEM	QUANTITY	UNIT
Structural Steel in Girders	11,735.56	LBS.
Structural Steel in Bearings	1,153.38	LBS.
Structural Steel in Expansion Joints	4,275.52	LBS.
Structural Steel Total	17,164.46	LBS.



DIAPHRAGMS DIAD-2

FOR INFORMATION ONLY



PINTLE DETAIL