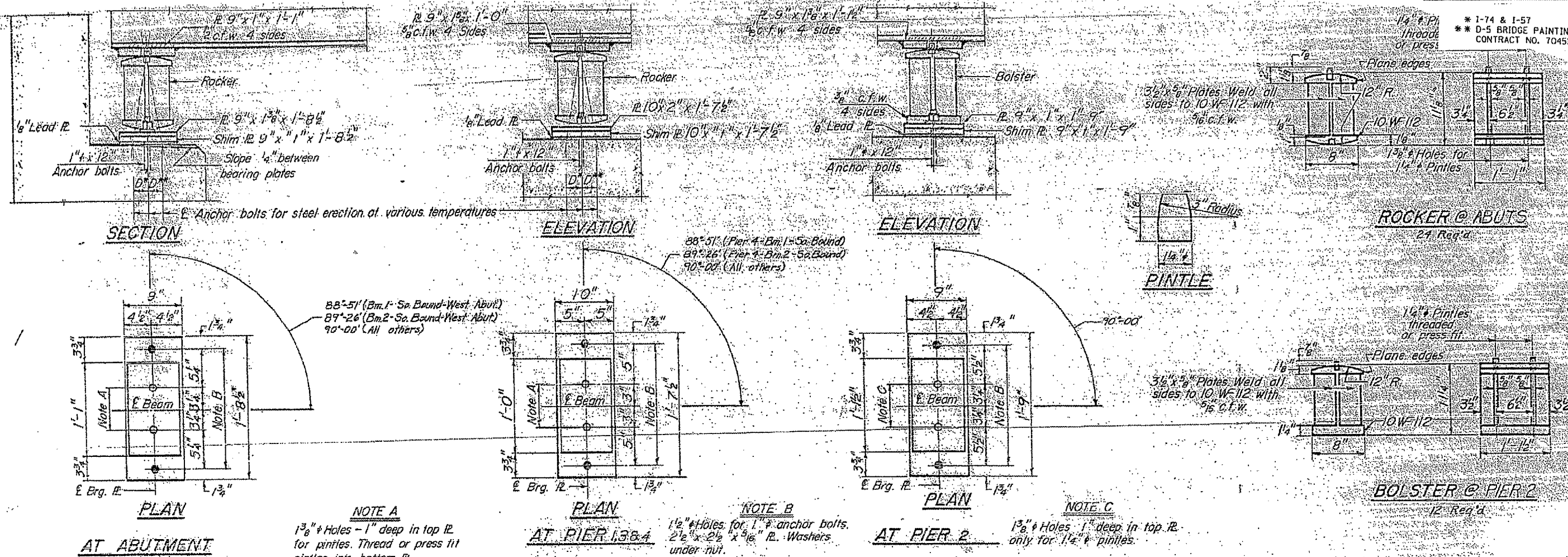


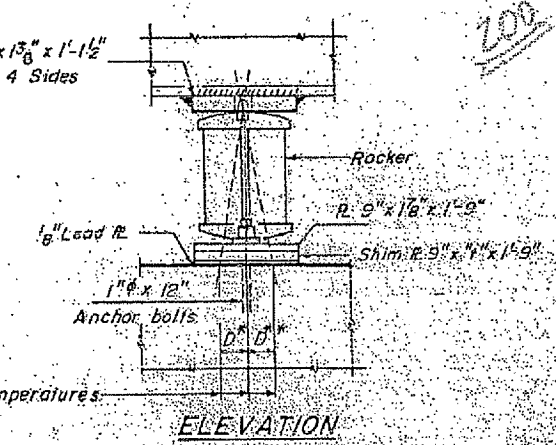
\* I-74 & I-57  
 \*\* D-5 BRIDGE PAINTING 2005-1  
 CONTRACT NO. 70451



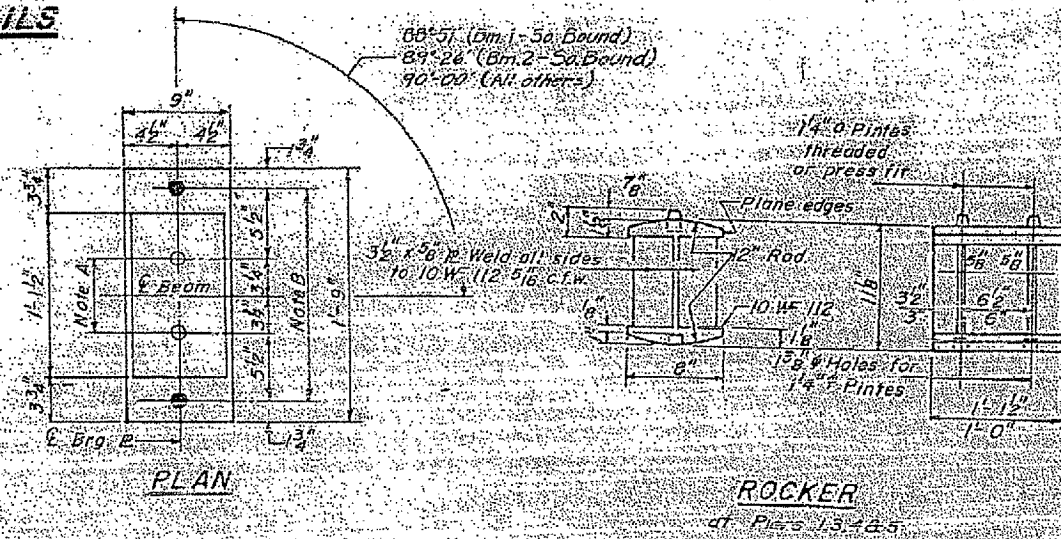
**NOTES ON SETTING OF ANCHOR BOLTS AT EXP. BRGS.**

- a) D\* (Side of brg. away from fixed brg.)  
 D\* = 1/8" per each 100' of expansion for every 15° fall below the normal temp. of 50°F.
- D\*\* (Side of brg. toward fixed brg.)  
 D\*\* = 1/8" per each 100' of expansion for every 15° rise above the normal temp. of 50°F.
- b) After beams have been erected and dimensions D\* or D\*\* determined, holes shall be drilled and anchor bolts shall be grouted in place. All fixed anchor bolts may be built into the masonry.

E Anchor bolts for steel erection at various temperatures



PIER 5



7" dimension (South Bound)

Bm.	E. Abut.	Pier 1	Pier 2	Pier 3	Pier 4	Pier 5	W. Abut.
1							
2							
3			16	5 1/2"	11 1/2"		
4	12	7 1/2"	2	5 1/2"	11 1/2"		
5	9 1/2"						
6							

1" dimension (North Bound)

Bm.	E. Abut.	Pier 1	Pier 2	Pier 3	Pier 4	Pier 5	W. Abut.
1							
2							
3				5 1/2"	11 1/2"	16	15
4				11 1/2"	16	16	16 1/2"
5				12	16		
6				18			

FOR INFORMATION ONLY

BEARING DETAILS  
 F.A. RTE. 57 SFS 21/10.29VB  
 CHAMPAIGN COUNTY  
 STA. 940+66.71