

FAP RTE.	SECTION	COUNTY	TOTAL SHEETS	SHEET NO.
821	13TS-2	JEFFERSON	8	1

FED. ROAD DIST. NO. 7 ILLINOIS FED. AID PROJECT NO.
 CONTRACT NO. 74034
D-97-019-04

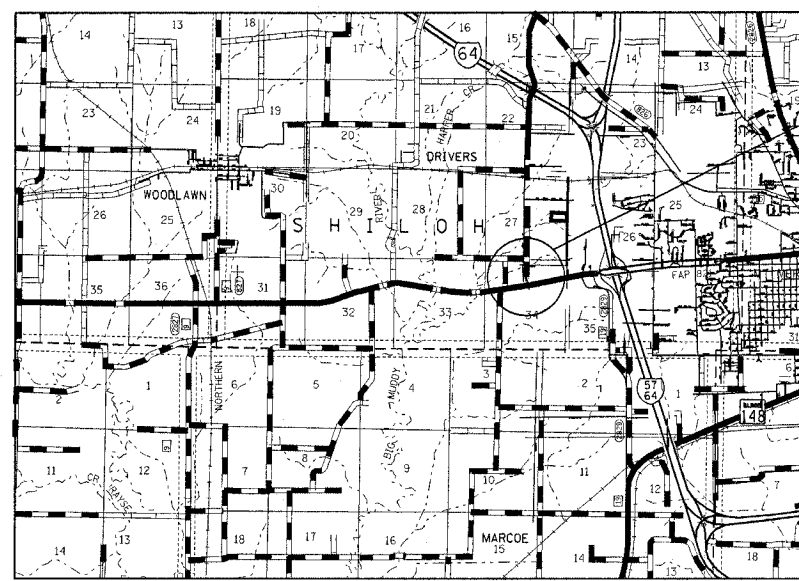
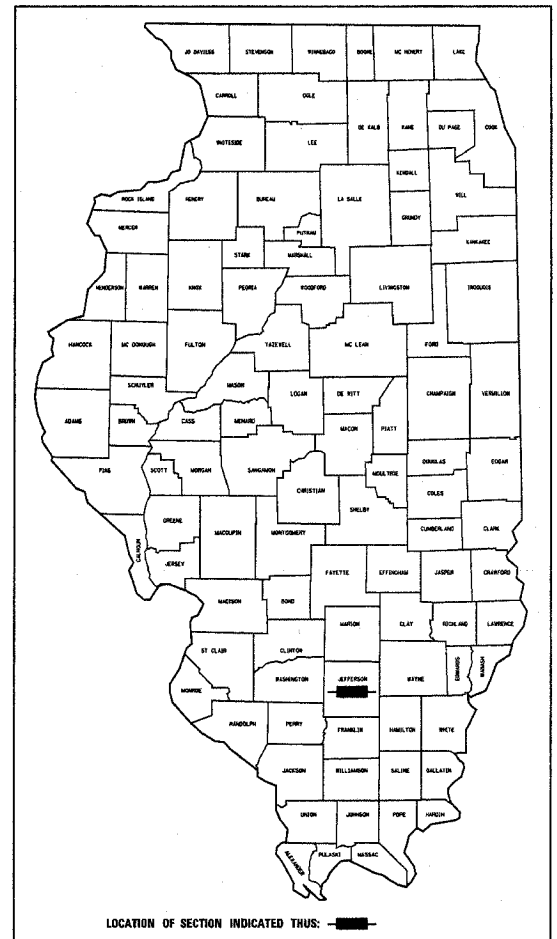
STATE OF ILLINOIS
 DEPARTMENT OF TRANSPORTATION
 DIVISION OF HIGHWAYS

**PLANS FOR PROPOSED
 FEDERAL HIGHWAY PROJECT**

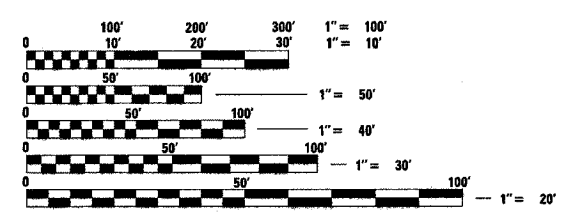
**FAP ROUTE 821 (IL ROUTE 15)
 SECTION 13TS-2
 HS -0821 (038)
 JEFFERSON COUNTY**

C-97-047-04

FOR INDEX OF SHEETS
 SEE SHEET NO. 2.



FAP ROUTE 821
 SECTION 13TS-2
 JEFFERSON COUNTY
 PROJECT LOCATION



FULL SIZE PLANS HAVE BEEN PREPARED USING STANDARD
 ENGINEERING SCALES, REDUCED SIZED PLANS WILL NOT
 CONFORM TO STANDARD SCALES, IN MAKING MEASUREMENTS
 ON REDUCED PLANS, THE ABOVE SCALES MAY BE USED.

J.U.L.I.E.
 JOINT UTILITY LOCATION INFORMATION FOR EXCAVATION
 1-800-892-0123

STATE OF ILLINOIS
 DEPARTMENT OF TRANSPORTATION
 DIVISION OF HIGHWAYS

SUBMITTED 10/27 2004
Stacy E. [Signature] DISTRICT ENGINEER

20

ENGINEER OF PROJECT DEVELOPMENT AND IMPLEMENTATION
December 10, 2004
Mike Hene [Signature]
 ENGINEER OF DESIGN AND ENVIRONMENT

December 10, 2004
Victor Modemko [Signature]
 DIRECTOR, DIVISION OF HIGHWAYS

PRINTED BY THE AUTHORITY OF
 THE STATE OF ILLINOIS

SEAL

GROSS LENGTH = FEET = MILES
 NET LENGTH = FEET = MILES

TOWNSHIP :

CONTRACT NO. 74034

PROJECT ENGINEER : ROB MACKLIN
 SQUAD LEADER :
 DESIGNER : LYNN MCCLELLAN
 TELEPHONE : 217/342-3951 EX. 245

V:\74034\01904\pa.dgn
 CKT 10/27/04