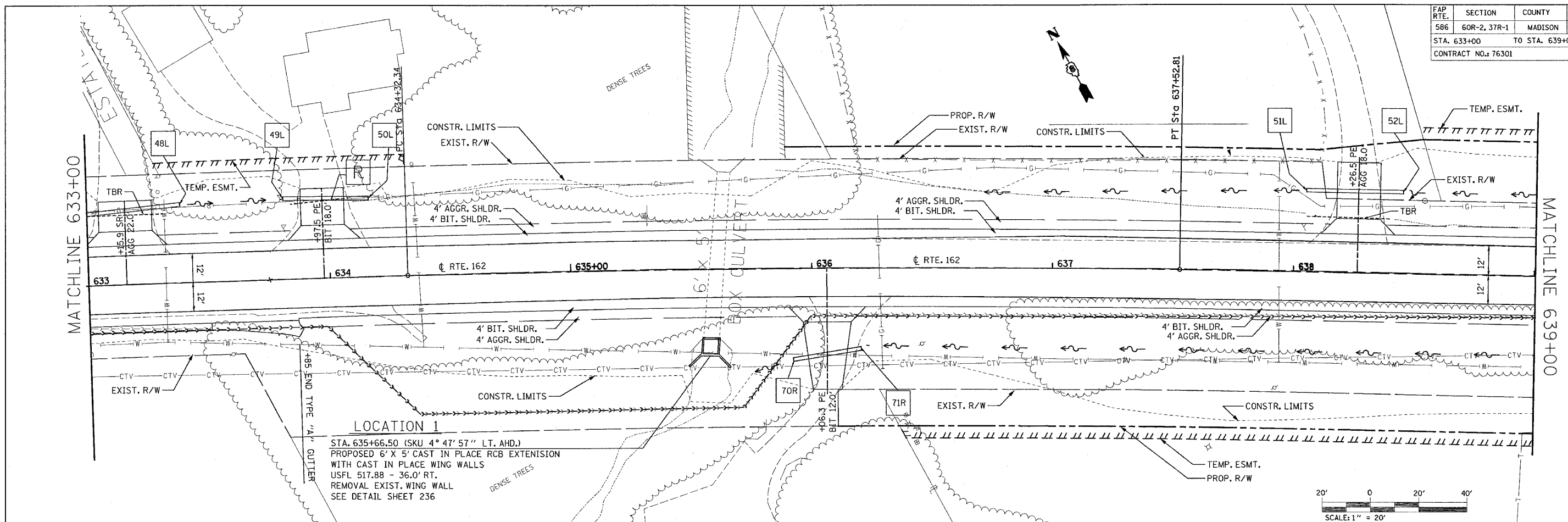


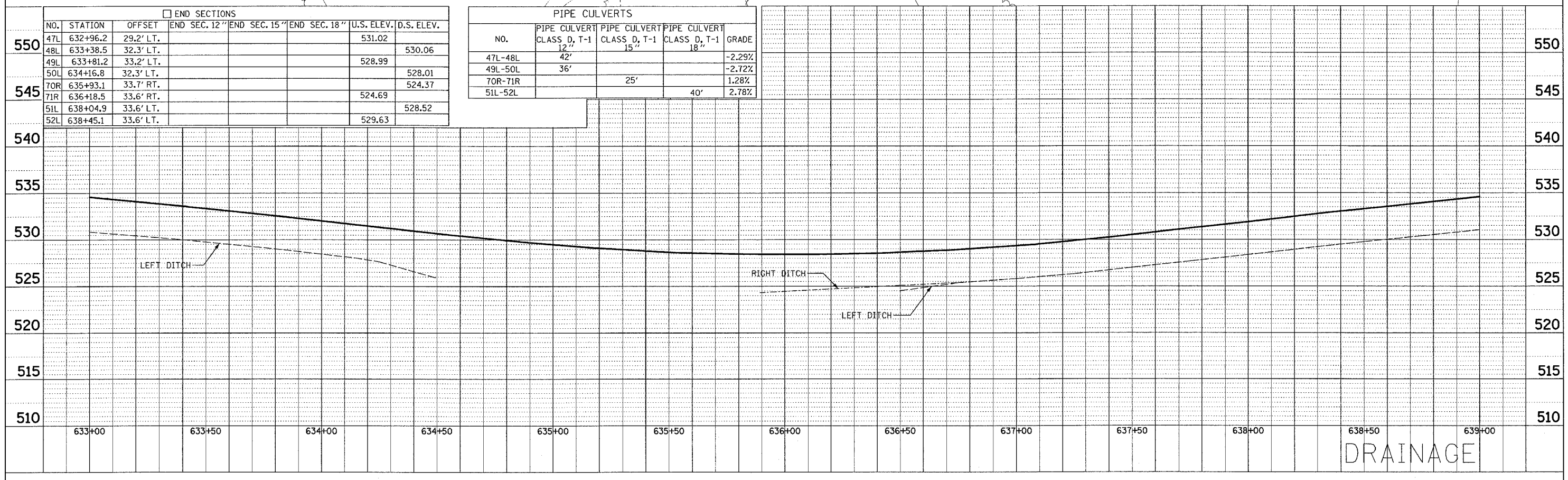
FAP RTE.	SECTION	COUNTY	TOTAL SHEETS	SHEET NO.
586	60R-2, 37R-1	MADISON	502	110
STA. 633+00		TO STA. 639+00		
CONTRACT NO.: 76301				



LOCATION 1
 STA. 635+66.50 (SKU 4° 47' 57" LT. AHD.)
 PROPOSED 6' X 5' CAST IN PLACE RCB EXTENSION
 WITH CAST IN PLACE WING WALLS
 USFL 517.88 - 36.0' RT.
 REMOVAL EXIST. WING WALL
 SEE DETAIL SHEET 236

END SECTIONS							
NO.	STATION	OFFSET	END SEC. 12"	END SEC. 15"	END SEC. 18"	U.S. ELEV.	D.S. ELEV.
47L	632+96.2	29.2' LT.				531.02	
48L	633+38.5	32.3' LT.					530.06
49L	633+81.2	33.2' LT.				528.99	
50L	634+16.8	32.3' LT.					528.01
70R	635+93.1	33.7' RT.				524.69	
71R	636+18.5	33.6' RT.					524.37
51L	638+04.9	33.6' LT.				529.63	
52L	638+45.1	33.6' LT.					528.52

PIPE CULVERTS				
NO.	PIPE CULVERT CLASS D, T-1	PIPE CULVERT CLASS D, T-1	PIPE CULVERT CLASS D, T-1	GRADE
47L-48L	12"	15"	18"	-2.29%
49L-50L	36'			-2.72%
70R-71R		25'		1.28%
51L-52L			40'	2.78%



PLAN SURVEYED BY: _____ DATE: _____
 PLOTTED BY: _____
 CHECKED BY: _____
 NOTE BOOK NO.: _____
 DATE FILED: _____

PROFILE SURVEYED BY: _____ DATE: _____
 PLOTTED BY: _____
 CHECKED BY: _____
 NOTE BOOK NO.: _____
 DATE FILED: _____

DRAINAGE