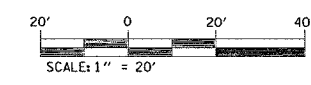
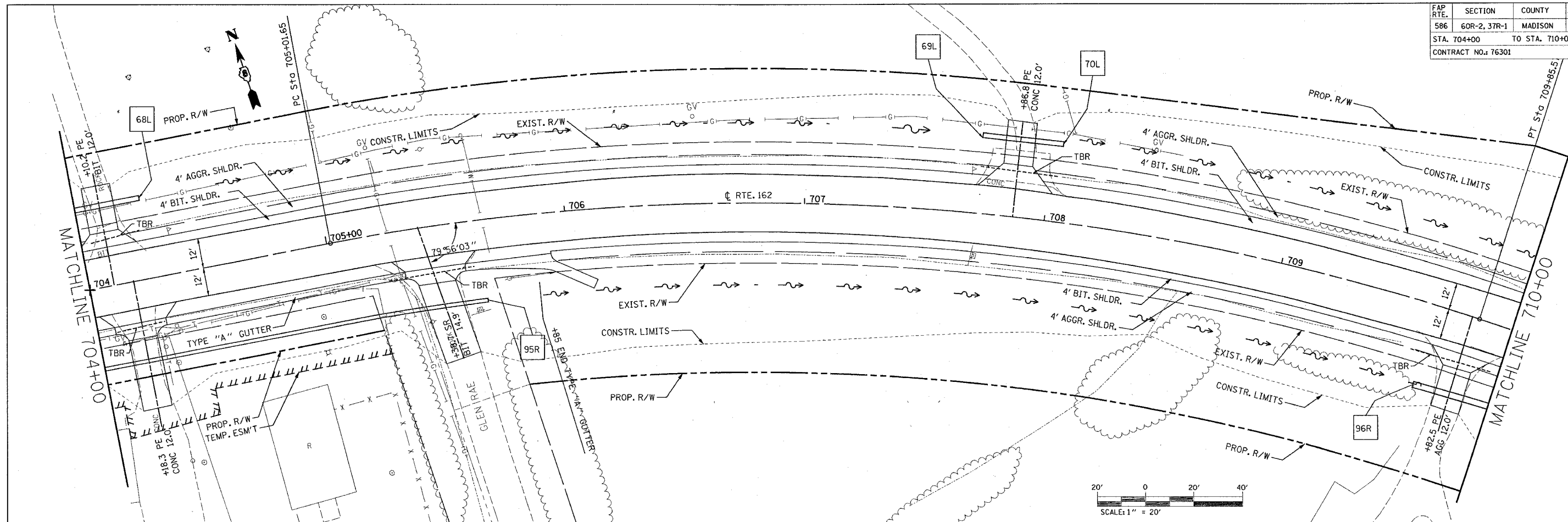


FAP RTE.	SECTION	COUNTY	TOTAL SHEETS	SHEET NO.
586	60R-2, 37R-1	MADISON	502	122
STA. 704+00 TO STA. 710+00			CONTRACT NO.: 76301	

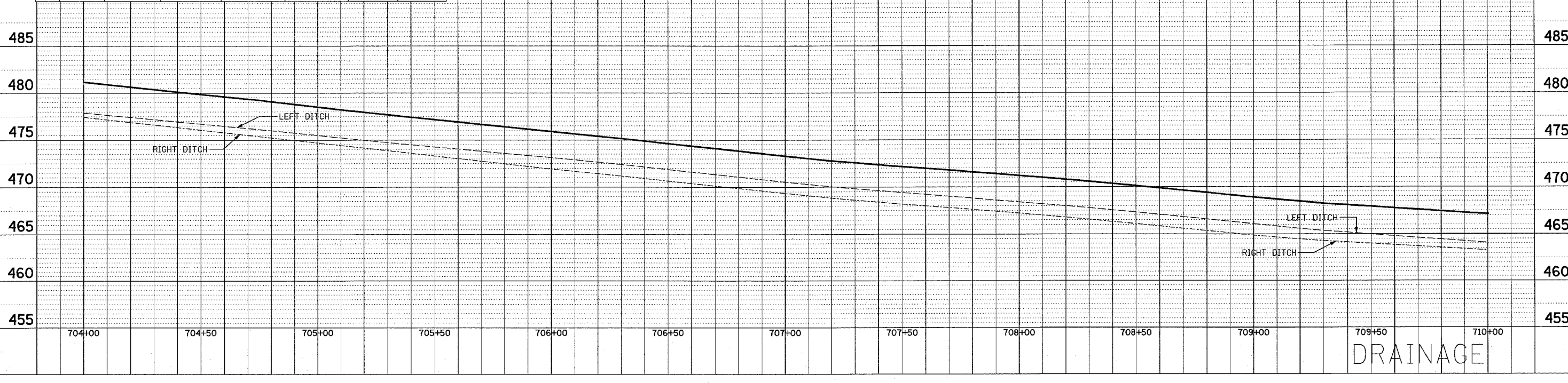


PLAN
 REVISIONS
 NO. DATE BY
 1
 2
 3
 4
 5
 6
 7
 8
 9
 10
 11
 12
 13
 14
 15
 16
 17
 18
 19
 20
 21
 22
 23
 24
 25
 26
 27
 28
 29
 30
 31
 32
 33
 34
 35
 36
 37
 38
 39
 40
 41
 42
 43
 44
 45
 46
 47
 48
 49
 50
 51
 52
 53
 54
 55
 56
 57
 58
 59
 60
 61
 62
 63
 64
 65
 66
 67
 68
 69
 70
 71
 72
 73
 74
 75
 76
 77
 78
 79
 80
 81
 82
 83
 84
 85
 86
 87
 88
 89
 90
 91
 92
 93
 94
 95
 96
 97
 98
 99
 100

PROFILE
 REVISIONS
 NO. DATE BY
 1
 2
 3
 4
 5
 6
 7
 8
 9
 10
 11
 12
 13
 14
 15
 16
 17
 18
 19
 20
 21
 22
 23
 24
 25
 26
 27
 28
 29
 30
 31
 32
 33
 34
 35
 36
 37
 38
 39
 40
 41
 42
 43
 44
 45
 46
 47
 48
 49
 50
 51
 52
 53
 54
 55
 56
 57
 58
 59
 60
 61
 62
 63
 64
 65
 66
 67
 68
 69
 70
 71
 72
 73
 74
 75
 76
 77
 78
 79
 80
 81
 82
 83
 84
 85
 86
 87
 88
 89
 90
 91
 92
 93
 94
 95
 96
 97
 98
 99
 100

END SECTIONS							
NO.	STATION	OFFSET	END SEC. 21"	END SEC. 24"	END SEC. 30"	U.S. ELEV.	D.S. ELEV.
495	67L	703+95.7	33.4' LT.	1		478.00	477.26
	68L	704+27.1	33.4' LT.	1			
	69L	707+71.0	32.3' LT.		1	468.97	468.32
	70L	708+04.1	32.3' LT.		1		
490	96R	709+67.0	34.0' RT.		1	463.75	
	97R	710+00.5	34.0' RT.		1		463.29

PIPE CULVERTS				
NO.	PIPE CULVERT CLASS D, T-1 21"	PIPE CULVERT CLASS D, T-1 24"	PIPE CULVERT CLASS D, T-1 30"	GRADE
67L-68L	23'			-2.83%
69L-70L		25'		-3.24%
96R-97R			33'	-1.39%



DRAINAGE