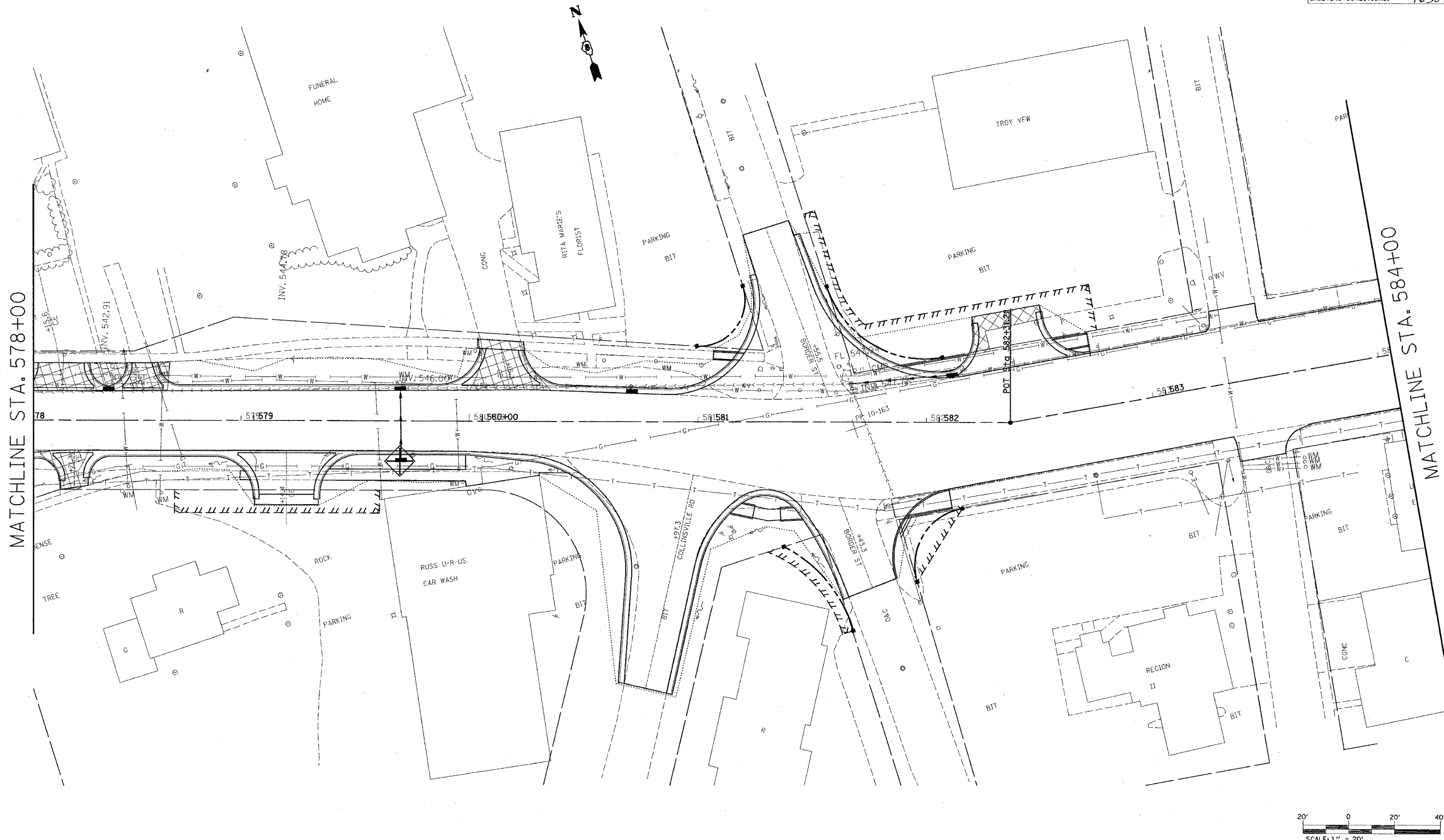


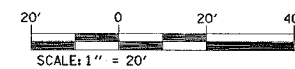
FAP ROUTE	SECTION	COUNTY	TOTAL SHEETS	SHEET NO.
586	60R-2, 37R-1	MADISON	502	144
STA. 578+00		TO STA. 584+00		
EXISTING CONDITIONS: 76301				

PLAN	DATE
NO.	
BY	
CHECKED	
APPROVED	
DATE	



MATCHLINE STA. 578+00

MATCHLINE STA. 584+00



REVISIONS	
NAME	DATE

ILLINOIS DEPARTMENT OF TRANSPORTATION  
**STORM WATER POLLUTION PREVENTION PLAN**  
 FAP ROUTE 586  
 SECTION 60R-2, 37R-1  
 MADISON COUNTY

DRAWN BY:

PLOT DATE: Friday July 02, 2004 @ 8:30:57 AM

7/2/2004 8:30:57 AM  
 C:\projects\586\235\plan\586\_235.dgn LV:2-6.8.12.4-18.22.22.24-29.37-48.42-48.50-50.57-59  
 C:\projects\586\235\plan\586\_235.dgn LV:2-6.8.12.4-18.22.22.24-29.37-48.42-48.50-50.57-59  
 C:\projects\586\235\plan\586\_235.dgn LV:2-6.8.12.4-18.22.22.24-29.37-48.42-48.50-50.57-59  
 C:\projects\586\235\plan\586\_235.dgn LV:2-6.8.12.4-18.22.22.24-29.37-48.42-48.50-50.57-59  
 C:\projects\586\235\plan\586\_235.dgn LV:2-6.8.12.4-18.22.22.24-29.37-48.42-48.50-50.57-59