

COORDINATES SHOWN HEREON ARE BASED ON SURVEY CONTROL DATA AS PROVIDED BY THE ILLINOIS DEPARTMENT OF TRANSPORTATION.

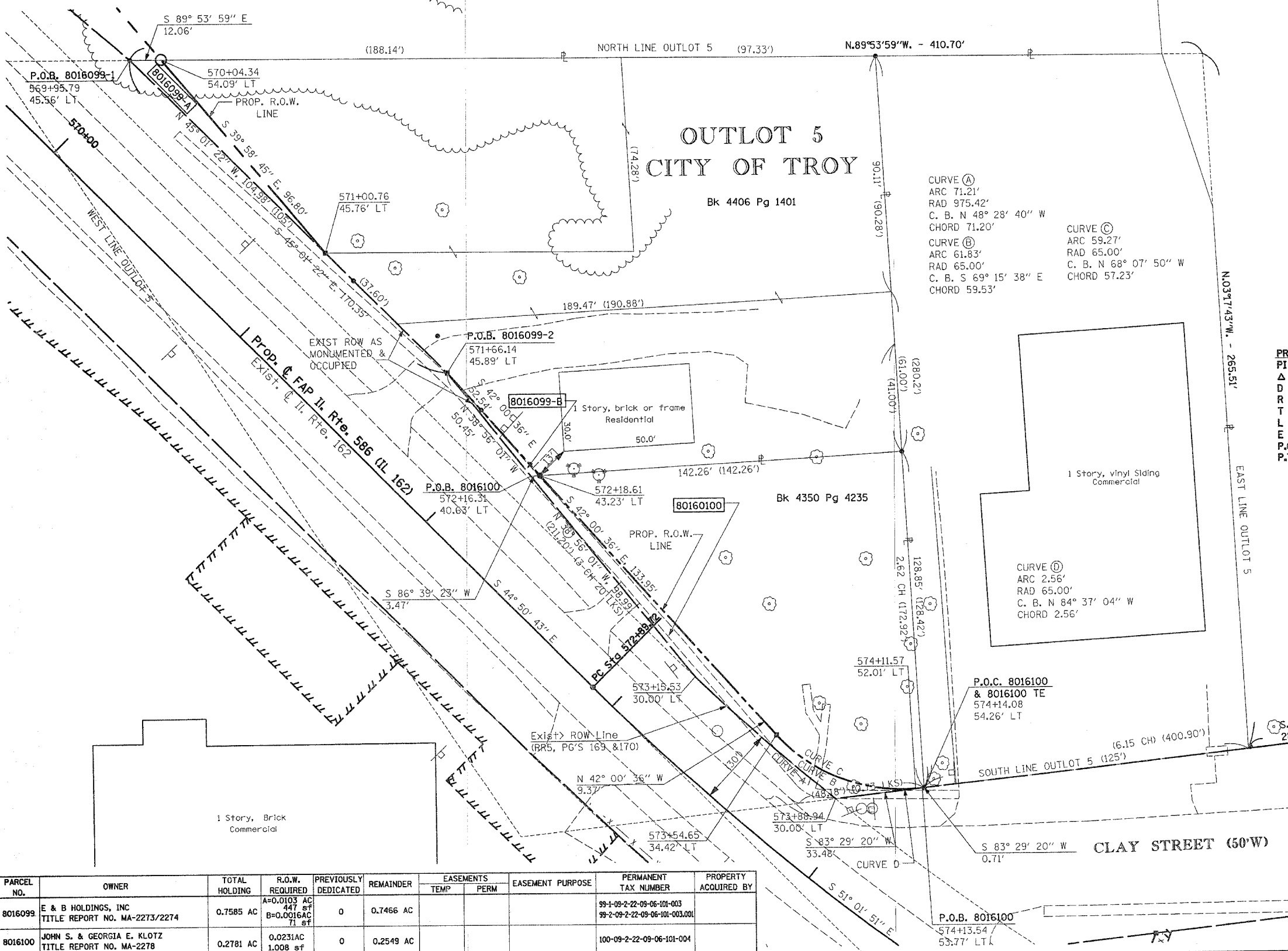
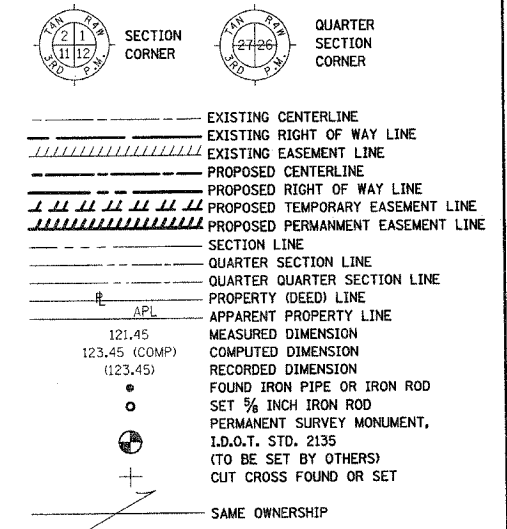
PART OF THE NW 1/4 OF SECTION 9, T3N, R7W, OF THE 3RD PM, MADISON COUNTY, ILLINOIS

BEARINGS SHOWN HEREON ARE BASED ON SURVEY CONTROL DATA AS PROVIDED BY THE ILLINOIS DEPARTMENT OF TRANSPORTATION.

SHEET 187 of 502
CONTRACT No. 16301

STATION	OFFSET	NORTH	EAST
570+04.34	54.09' LT	751844.8195	2376189.2891
571+00.76	45.76' LT	751770.6408	2376251.4867
571+66.14	45.89' LT	751724.4342	2376297.7301
572+18.61	43.23' LT	751685.3959	2376332.8925
573+54.65	34.42' LT	751585.8680	2376422.5391
574+14.08	54.26' LT	751564.8537	2376478.9164
574+13.54	53.77' LT	751564.7892	2376478.2699
572+89.72	0.00' LT	751604.5120	2376352.4890

LEGEND



CURVE (A)
ARC 71.21'
RAD 975.42'
C. B. N 48° 28' 40" W
CHORD 71.20'

CURVE (B)
ARC 61.83'
RAD 65.00'
C. B. S 69° 15' 38" E
CHORD 59.53'

CURVE (C)
ARC 59.27'
RAD 65.00'
C. B. N 68° 07' 50" W
CHORD 57.23'

PROP. CURVE DATA
PI STA. = 575+30.44
Δ = 26° 55' 42" (LT)
R = 5° 41' 55"
D = 1,005.42'
T = 240.71'
L = 472.54'
E = 28.41'
P.C. STA = 572+89.72
P.T. STA = 577+62.26

STATE OF ILLINOIS)
COUNTY OF) SS

THIS IS TO CERTIFY THAT I, THOMAS M. DRONE, AN ILLINOIS PROFESSIONAL LAND SURVEYOR, HAS SURVEYED THE PLAT OF HIGHWAYS SHOWN HEREON IN SECTION 8, TOWNSHIP 3 NORTH, RANGE 7 WEST, OF THE THIRD PRINCIPAL MERIDIAN, MADISON COUNTY, THAT THE SURVEY IS TRUE AND COMPLETE AS SHOWN TO THE BEST OF MY KNOWLEDGE AND BELIEF, THAT THE PLAT CORRECTLY REPRESENTS SAID SURVEY, THAT ALL MONUMENTS FOUND AND ESTABLISHED ARE OF PERMANENT QUALITY AND OCCUPY THE POSITIONS SHOWN THEREON AND THAT THE MONUMENTS ARE SUFFICIENT TO ENABLE THE SURVEY TO BE RETRACED. MADE FOR THE DEPARTMENT OF TRANSPORTATION, STATE OF ILLINOIS.

DATED _____
THOMAS M. DRONE, PLS #2273

Hurst-Rosche Engineers, Inc.
2657 W. Lawrence
Springfield, IL. 62704
217-787-1199

ILLINOIS DEPARTMENT OF TRANSPORTATION
PLAT OF HIGHWAYS
FAP ROUTE 586 (IL 162)
SECTION 60R-2
MADISON COUNTY
JOB NO. R-98-016-00
STATION 570+00 TO STATION 575+00

SCALE: 1" = 20'

ILLINOIS DEPARTMENT OF TRANSPORTATION
DIVISION OF HIGHWAYS/DISTRICT 8
1102 EASTPORT PLAZA DRIVE
COLLINGSVILLE, ILLINOIS 62234-6198

PARCEL NO.	OWNER	TOTAL HOLDING	R.O.W. REQUIRED	PREVIOUSLY DEDICATED	REMAINDER	EASEMENTS		EASEMENT PURPOSE	PERMANENT TAX NUMBER	PROPERTY ACQUIRED BY
						TEMP	PERM			
8016099	E & B HOLDINGS, INC TITLE REPORT NO. MA-2273/2274	0.7585 AC	A=0.0103 AC 441 sf B=0.0016 AC 71 sf	0	0.7466 AC				99-1-09-2-22-09-06-101-003 99-2-09-2-22-09-06-101-003.001	
8016100	JOHN S. & GEORGIA E. KLOTZ TITLE REPORT NO. MA-2278	0.2781 AC	0.0231 AC 1,008 sf	0	0.2549 AC				100-09-2-22-09-06-101-004	

PLOT DATE: DATE-TIME