

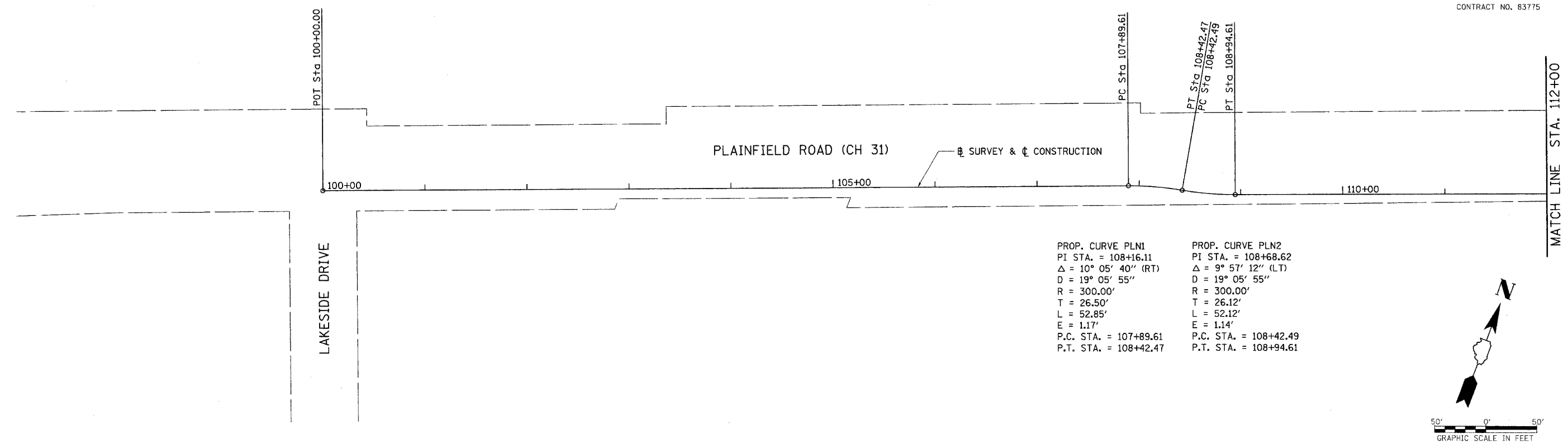
RTE. NO.	SECTION	COUNTY	TOTAL SHEETS	SHEET NO.
02-00001-05-BT	DUPAGE	ILLINOIS	113	11

STA. 100+00 TO STA. 127+00

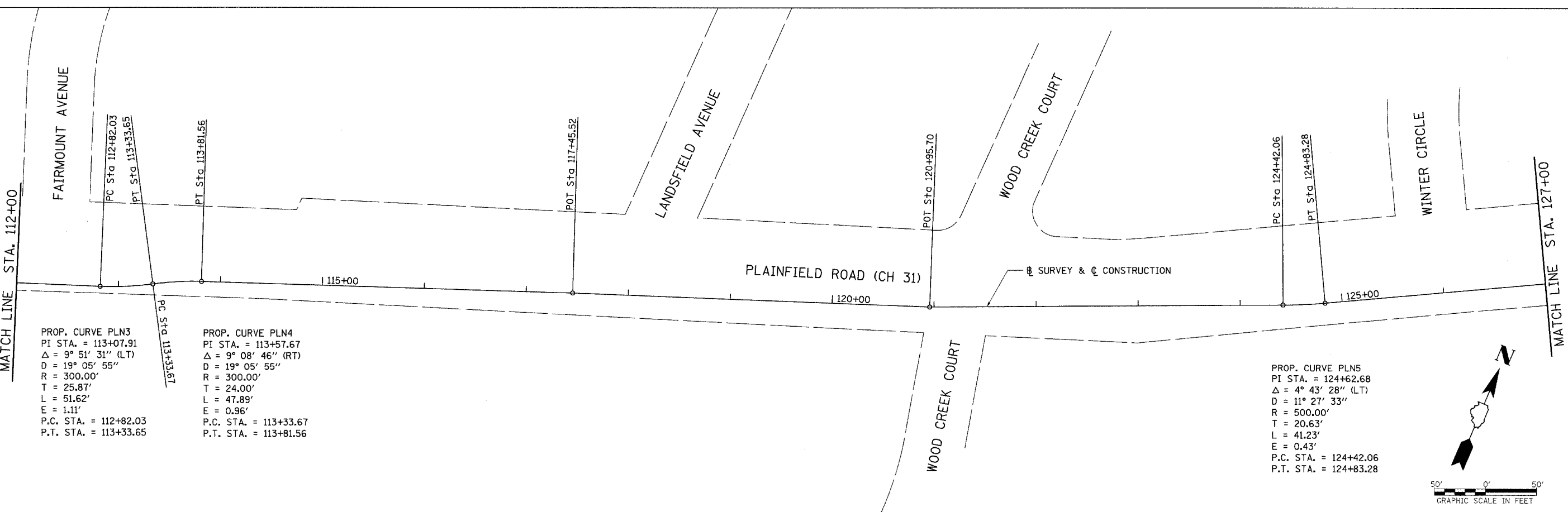
FED. ROAD DIST. NO. ILLINOIS FED. AID PROJECT

*SOUTHERN DUPAGE REGIONAL TRAIL GREENE VALLEY SPUR

CONTRACT NO. 83775



PROP. CURVE PLN1 PI STA. = 108+16.11 $\Delta = 10^\circ 05' 40''$ (RT) D = 19' 05' 55" R = 300.00' T = 26.50' L = 52.85' E = 1.17' P.C. STA. = 107+89.61 P.T. STA. = 108+42.47	PROP. CURVE PLN2 PI STA. = 108+68.62 $\Delta = 9^\circ 57' 12''$ (LT) D = 19' 05' 55" R = 300.00' T = 26.12' L = 52.12' E = 1.14' P.C. STA. = 108+42.49 P.T. STA. = 108+94.61
---	--



PROP. CURVE PLN3 PI STA. = 113+07.91 $\Delta = 9^\circ 51' 31''$ (LT) D = 19' 05' 55" R = 300.00' T = 25.87' L = 51.62' E = 1.11' P.C. STA. = 112+82.03 P.T. STA. = 113+33.65	PROP. CURVE PLN4 PI STA. = 113+57.67 $\Delta = 9^\circ 08' 46''$ (RT) D = 19' 05' 55" R = 300.00' T = 24.00' L = 47.89' E = 0.96' P.C. STA. = 113+33.67 P.T. STA. = 113+81.56
--	--

PROP. CURVE PLN5 PI STA. = 124+62.68 $\Delta = 4^\circ 43' 28''$ (LT) D = 11' 27' 33" R = 500.00' T = 20.63' L = 41.23' E = 0.43' P.C. STA. = 124+42.06 P.T. STA. = 124+83.28
--