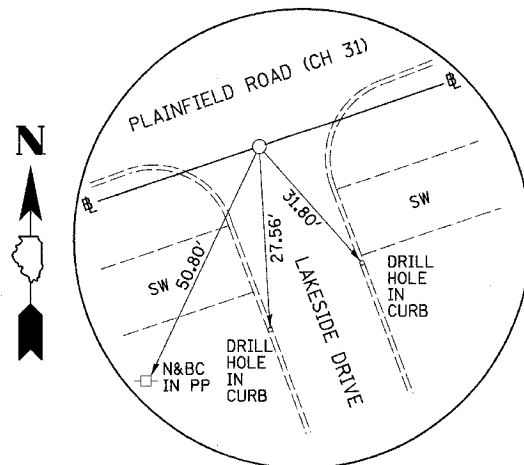
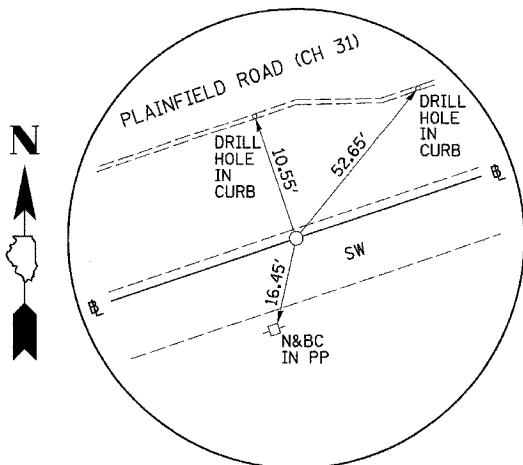


RTE. NO.	SECTION	COUNTY	TOTAL SHEETS	SHEET NO.
02-0001-05-BT	DUPAGE	DUPAGE	113	21
STA. N/A		TO STA. N/A		
FED. ROAD DIST. NO.		ILLINOIS	FED. AID PROJECT	

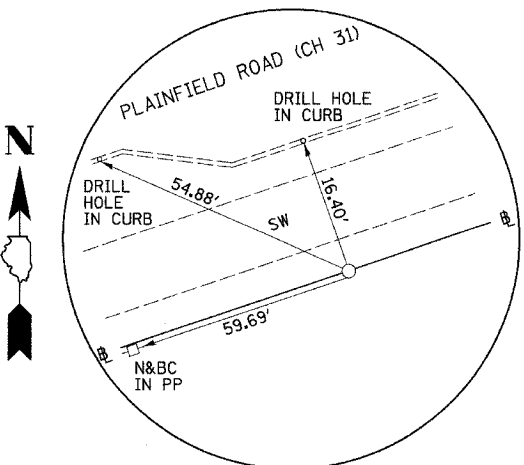
*SOUTHERN DUPAGE REGIONAL TRAIL
GREENE VALLEY SPUR
CONTRACT NO. 83775



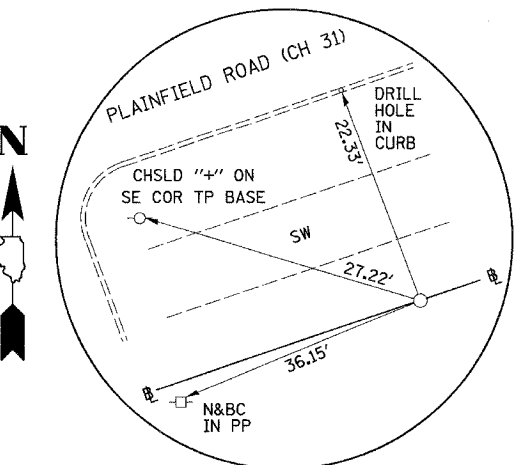
POT STA. 100+00.00
PLAINFIELD ROAD (CH 31)
(PK NAIL IN PVMT)



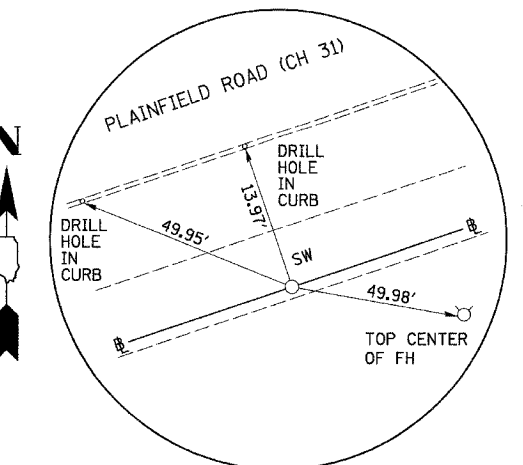
PI STA. 108+16.11
PLAINFIELD ROAD (CH 31)
(CHSLD "4" ON SW)



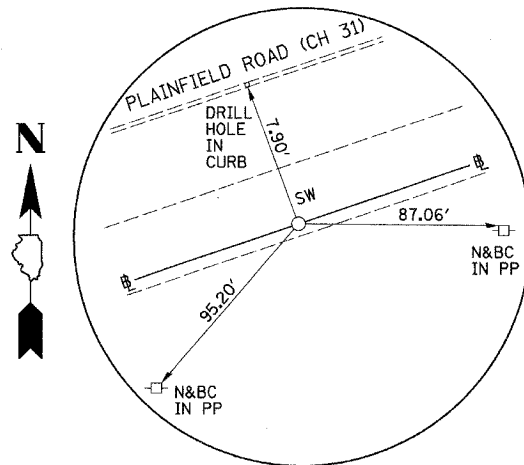
PI STA. 108+68.62
PLAINFIELD ROAD (CH 31)
(5/8" I-ROD)



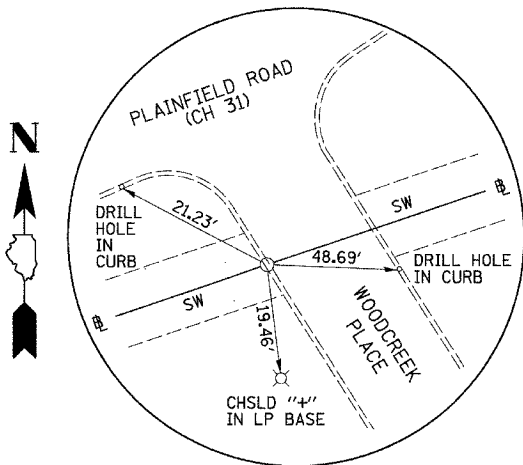
PI STA. 113+07.91
PLAINFIELD ROAD (CH 31)
(5/8" I-ROD)



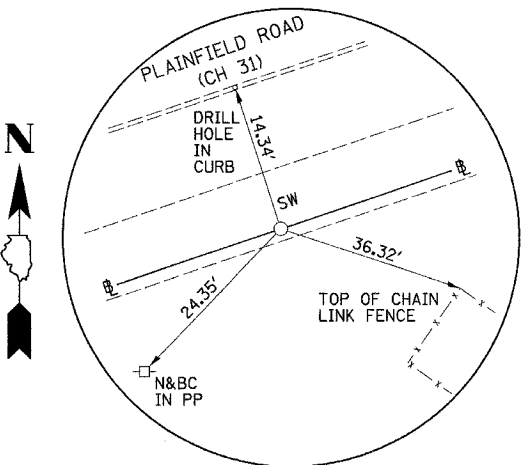
PI STA. 113+57.67
PLAINFIELD ROAD (CH 31)
(CHSLD "4" ON SW)



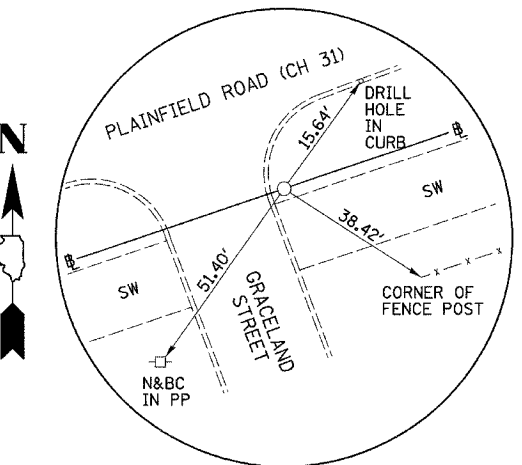
POT STA. 117+45.52
PLAINFIELD ROAD (CH 31)
(CHSLD "4" ON SW)



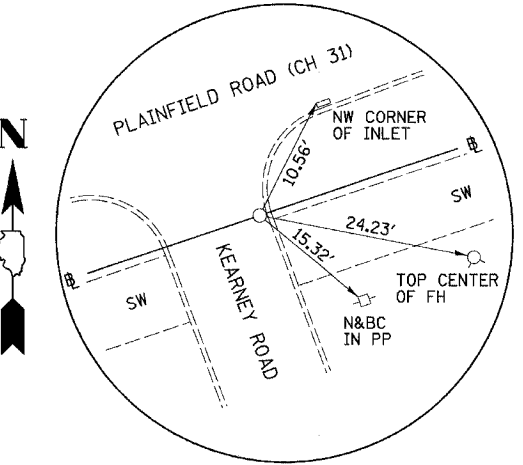
POT STA. 120+95.70
PLAINFIELD ROAD (CH 31)
(CHSLD "4" IN GUTTER)



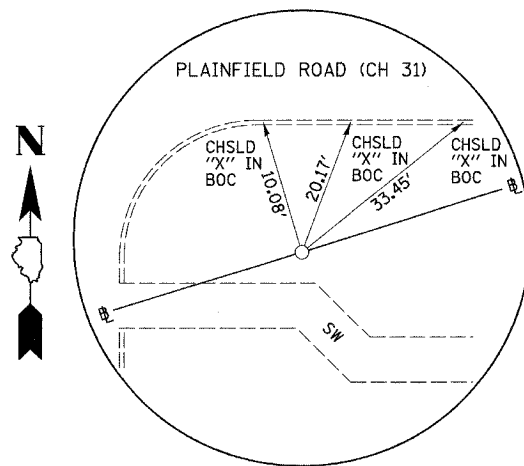
PI STA. 124+62.68
PLAINFIELD ROAD (CH 31)
(CHSLD "4" ON SW)



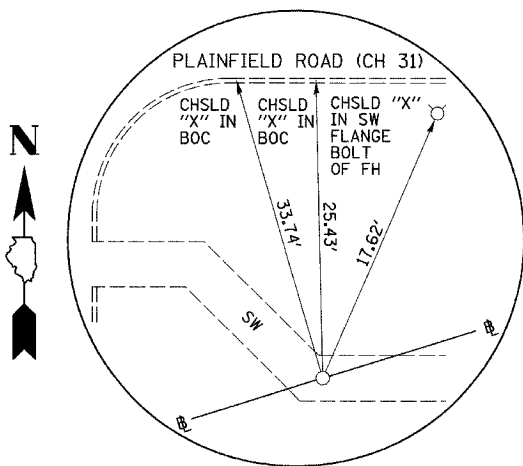
POT STA. 129+75.00
PLAINFIELD ROAD (CH 31)
(5/8" I-ROD)



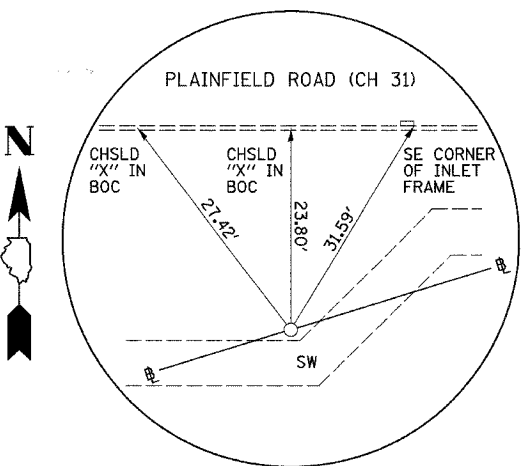
POT STA. 134+71.70
PLAINFIELD ROAD (CH 31)
(CHSLD "4" IN GUTTER)



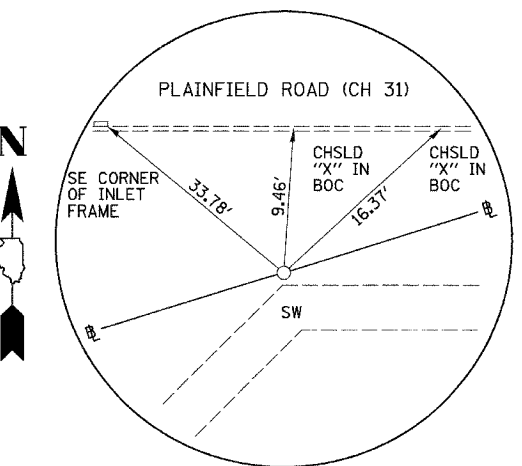
POT STA. 137+41.83
PLAINFIELD ROAD (CH 31)
(5/8" I-ROD)



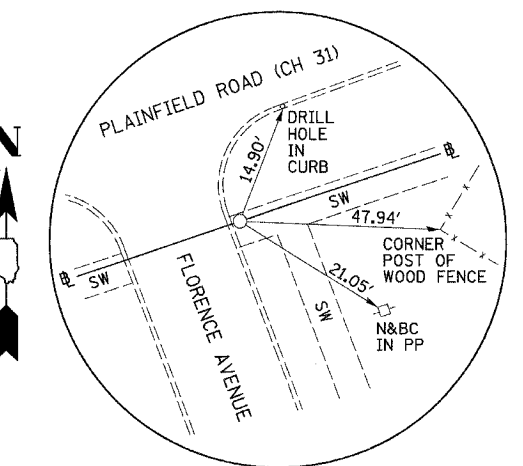
POT STA. 137+85.39
PLAINFIELD ROAD (CH 31)
(CHSLD "4" ON SW)



POT STA. 140+36.15
PLAINFIELD ROAD (CH 31)
(5/8" I-ROD)



POT STA. 140+90.78
PLAINFIELD ROAD (CH 31)
(5/8" I-ROD)



POT STA. 142+17.51
PLAINFIELD ROAD
(CHSLD "4" ON SW)