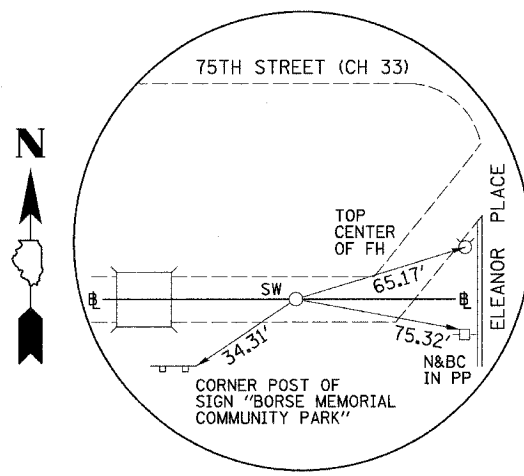
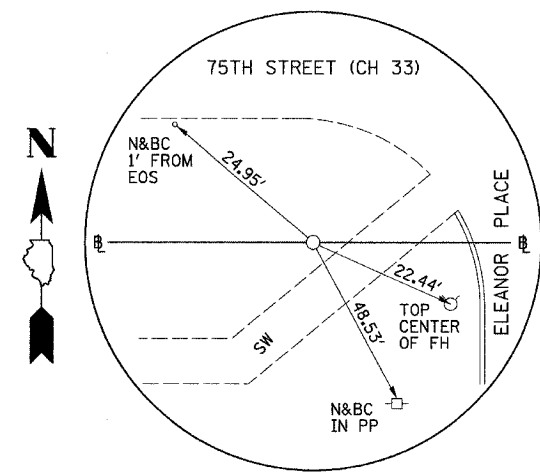


RTE. NO.	SECTION	COUNTY	TOTAL SHEETS	SHEET NO.
02-00001-05-BT	DUPAGE	DUPAGE	113	27
STA. N/A		TO STA. N/A		
FED. ROAD DIST. NO.		ILLINOIS FED. AID PROJECT		

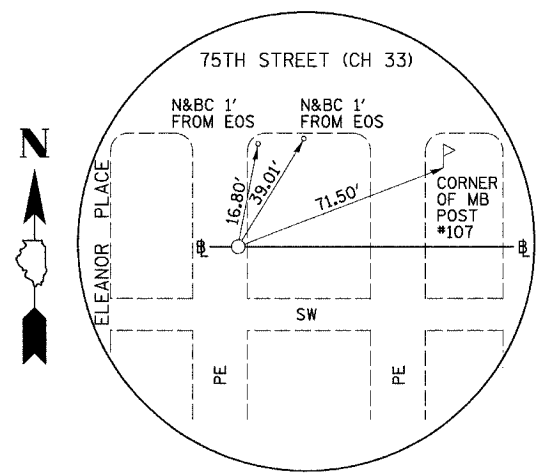
\*SOUTHERN DUPAGE REGIONAL TRAIL  
GREENE VALLEY SPUR  
CONTRACT NO. 83775



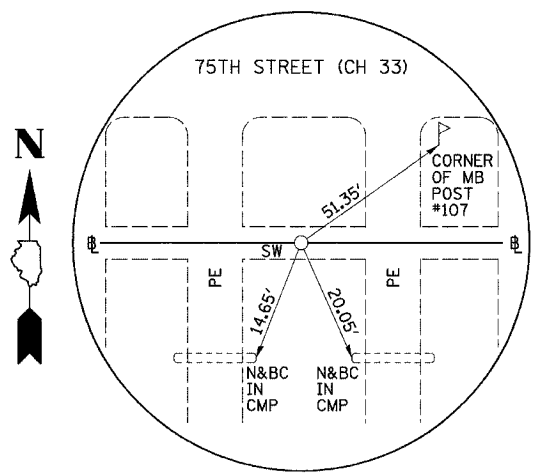
PI STA. 569+66.73  
75TH STREET (CH 33)  
(CHSLD "+" ON SW)



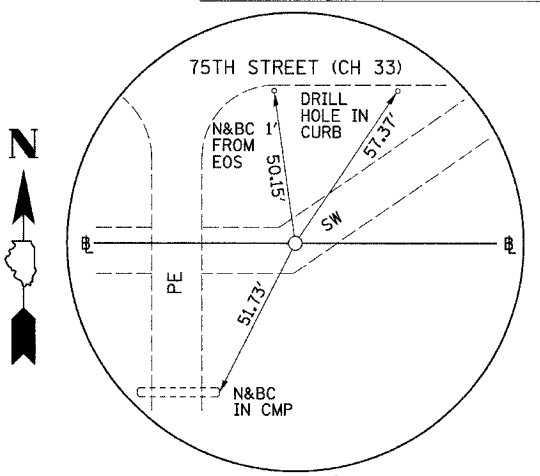
PI STA. 570+21.19  
75TH STREET (CH 33)  
(5/8" I-ROD)



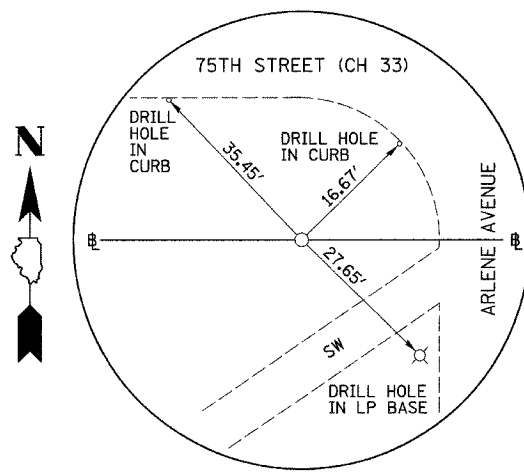
PI STA. 571+40.74  
75TH STREET (CH 33)  
(PK NAIL IN PVMT)



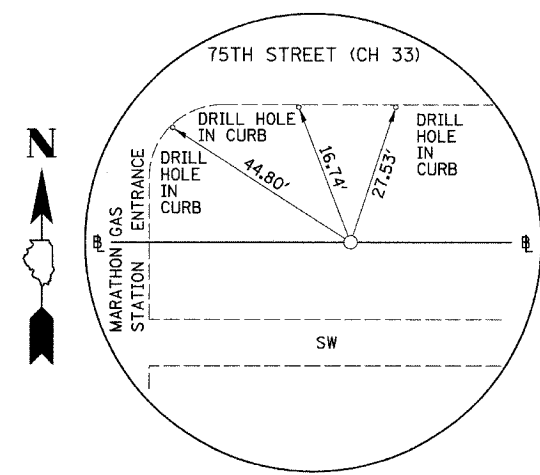
PI STA. 571+64.46  
75TH STREET (CH 33)  
(CHSLD "V" ON SW)



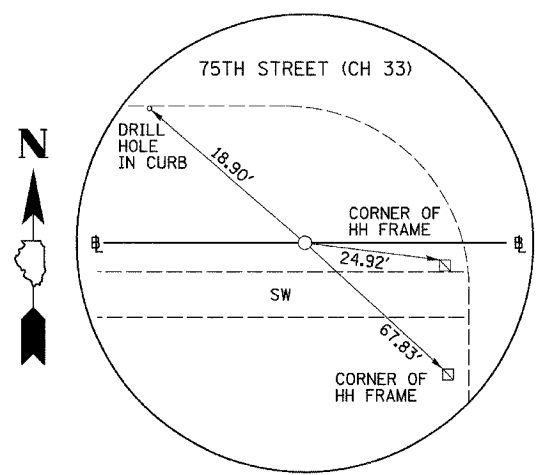
PI STA. 576+22.28  
75TH STREET (CH 33)  
(CHSLD "+" ON SW)



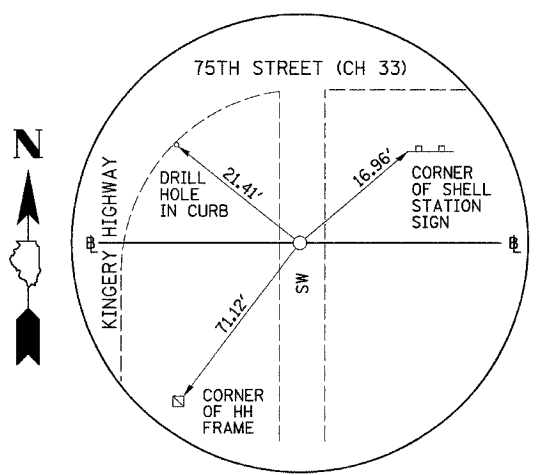
PI STA. 576+93.80  
75TH STREET (CH 33)  
(5/8" I-ROD)



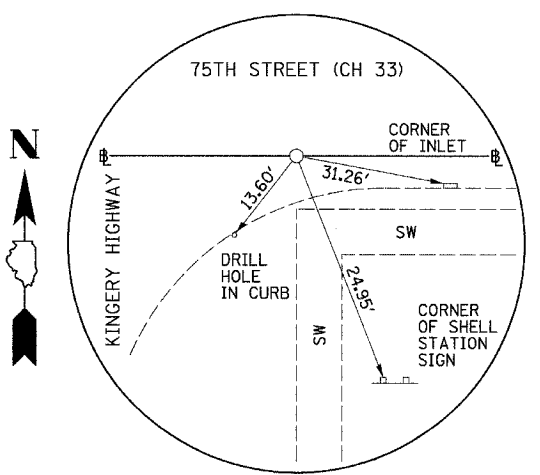
PI STA. 578+93.84  
75TH STREET (CH 33)  
(5/8" I-ROD)



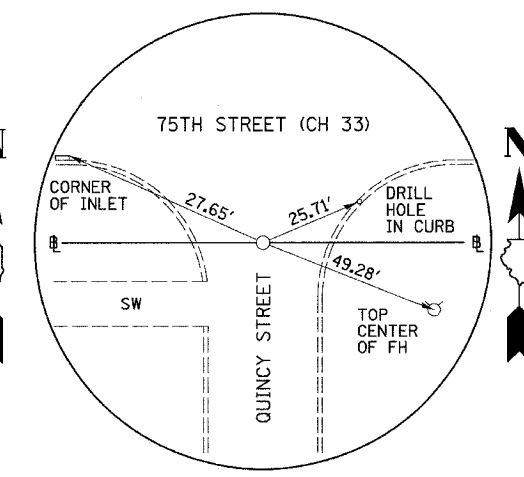
PI STA. 579+26.70  
75TH STREET (CH 33)  
(5/8" I-ROD)



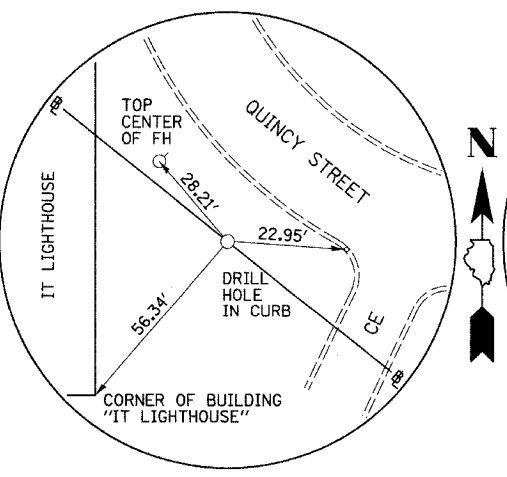
PI STA. 581+19.16  
75TH STREET (CH 33)  
(CHSLD "V" ON SW)



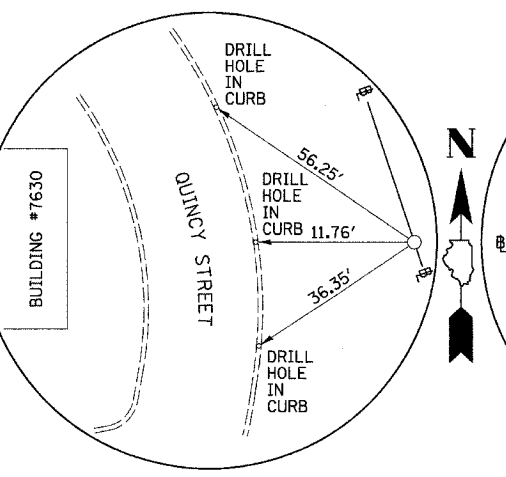
PI STA. 581+41.86  
75TH STREET (CH 33)  
(CHSLD "V" IN GUTTER)



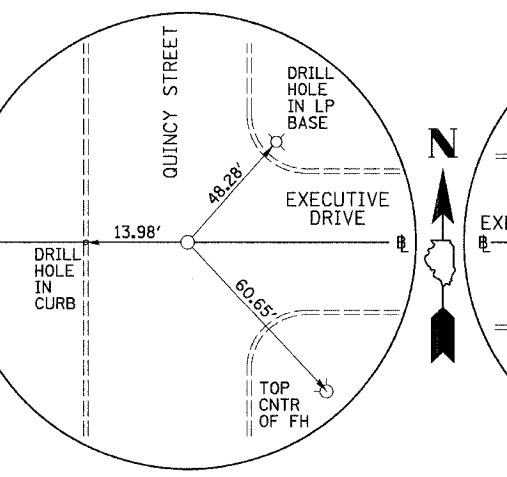
POT STA. 587+63.49 & POT 600+00.00  
75TH STREET (CH 33)  
(PK NAIL IN PVMT)



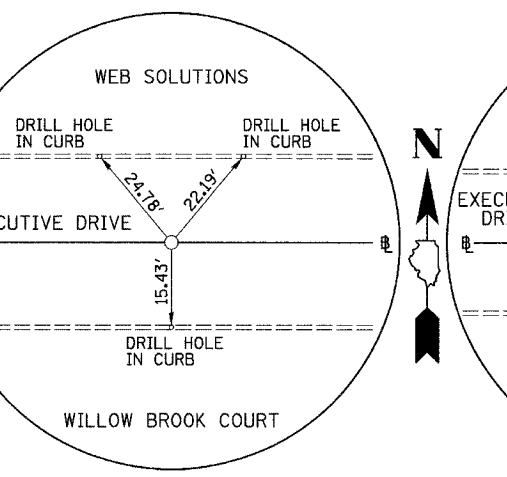
PI STA. 603+38.03  
QUINCY STREET  
(5/8" I-ROD)



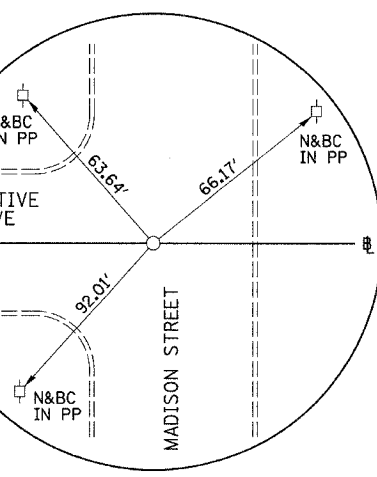
PI STA. 608+36.88  
QUINCY STREET  
(5/8" I-ROD)



POT STA. 610+00.00 & POT STA. 700+00.00  
QUINCY STREET  
(PK NAIL IN PVMT)



POT STA. 708+00.00  
EXECUTIVE DRIVE  
(PK NAIL IN PVMT)



POT STA. 716+20.88  
EXECUTIVE DRIVE  
(PK NAIL IN PVMT)