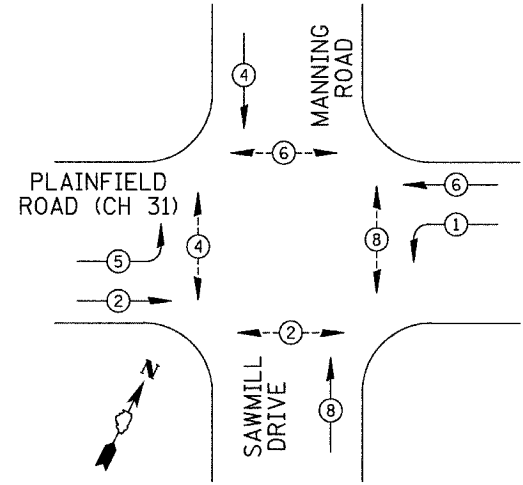


CONTROLLER SEQUENCE IV REFERRING TO STANDARD 857001, THE VEHICULAR AND PEDESTRIAN PHASES USED ARE DESIGNATED BELOW.



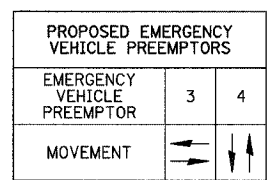
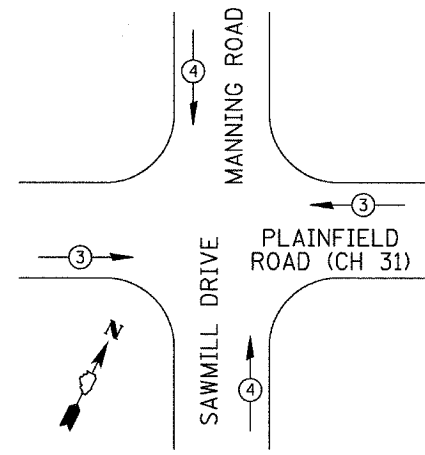
LEGEND
 * (with arrow) DUAL ENTRY PHASE
 OL OVERLAP
 * (with arrow) PEDESTRIAN PHASE
 * NUMBER REFERS TO ASSOCIATED PHASE.

PHASE DESIGNATION DIAGRAM
 EXISTING - TO REMAIN
 DUAL ENTRY - ALL LEGS
 PROTECTED/PERMITTED LEFT TURN PHASING

SCHEDULE OF QUANTITIES

81400115	HANDHOLE TO BE ADJUSTED	EACH	1
85000200	MAINTENANCE OF EXISTING TRAFFIC SIGNAL INSTALLATION	EACH	1
X8810610	PEDESTRIAN SIGNAL HEAD, L.E.D., 1-FACE, BRACKET MOUNTED	EACH	6
X8810620	PEDESTRIAN SIGNAL HEAD, L.E.D., 2-FACE, BRACKET MOUNTED	EACH	1
89502375	REMOVE EXISTING TRAFFIC SIGNAL EQUIPMENT	EACH	1

NOTE: REMOVE EXISTING TRAFFIC SIGNAL EQUIPMENT, THIS SHALL CONSIST OF THE REMOVAL OF EIGHT EXISTING (TEXT) 1-FACE BRACKET MOUNTED PEDESTRIAN SIGNAL INDICATIONS, TO BE REPLACED WITH SYMBOL PEDESTRIAN INDICATIONS.



EMERGENCY VEHICLE PREEMPTION SEQUENCE
 EXISTING - TO REMAIN

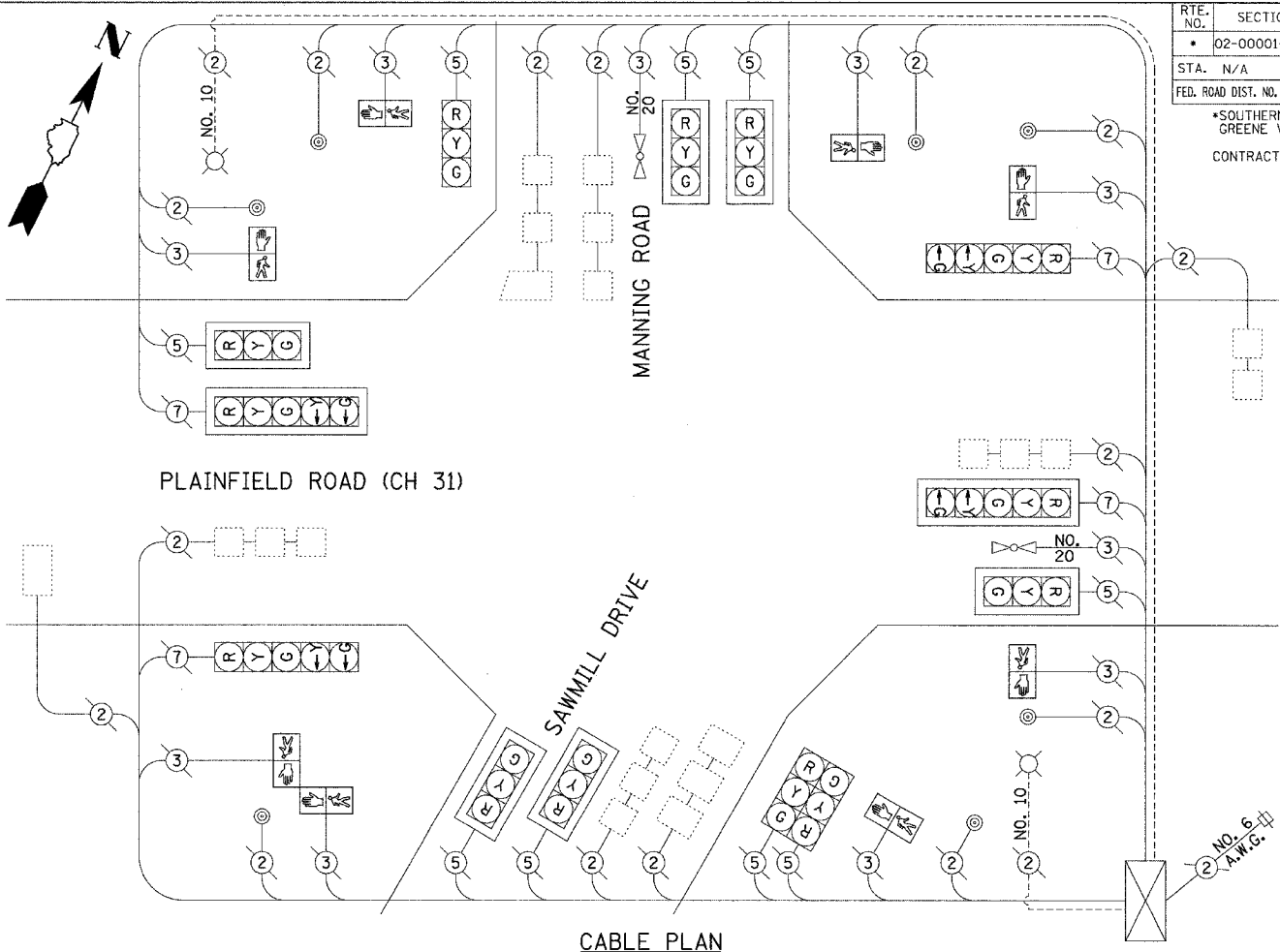
FOUNDATION (DEPTH)	FT. (m)	CABLE SLACK	FT. (m)	VERTICAL	FT. (m)
TYPE A - POST	4 (1.2)	HANDHOLE	6.5 (2.0)	ALL FOUNDATIONS	3.5 (1.0)
D - CONTROLLER	4 (1.2)	DOUBLE HANDHOLE	13 (4.0)	MAST ARM (L) POLE	20'+L-2=
E - MAST ARM POLE		SIGNAL POST	2 (1.0)	(6 m+L-0.6 m)=	
	24" (600 mm)	10 (3.0)	CONTROLLER CABINET	1 (0.5)	BRACKET MOUNTED
	30" (750 mm)	15 (4.6)	FIBER OPTIC	13 (4.0)	PEDESTRIAN PUSHBUTTON
			ELECTRIC SERVICE	1 (0.5)	ELECTRIC SERVICE
			GROUND CABLE	1 (0.5)	SERVICE TO GROUND
					POST MOUNTED
					6 (1.8)

I.D.O.T. TRAFFIC SIGNAL INSTALLATION ELECTRICAL SERVICE REQUIREMENTS

TYPE	NO. LAMPS	WATTAGE		% OPERATION	TOTAL WATTAGE
		INCAND	LED		
SIGNAL (RED)	13	135	-	0.50	877.50
(YELLOW)	13	135	-	0.25	438.75
(GREEN)	13	135	-	0.25	438.75
ARROW	8	135	-	0.10	108.00
PED. SIGNALS	8	-	25	1.00	200.00
CONTROLLER	1	100	100	1.00	100.00
ILLUM. SIGN	-	-	-	0.05	-
FLASHER	-	-	-	-	-
TOTAL					2163.00

ENERGY COSTS TO: DuPAGE COUNTY

ENERGY SUPPLY CONTACT:



CABLE PLAN

CABLE PLAN LEGEND

EXISTING	PROPOSED	EXISTING	PROPOSED
(G)	(G)	(24)	(24)
(R)	(R)	(R)	(R)
(W)	(W)	(Y)	(Y)
(P)	(P)	(G)	(G)
(H)	(H)	(P)	(P)
(E)	(E)	(NLT)	(NLT)
(E)	(E)	(NRT)	(NRT)
(H/C)	(H/C)	(H)	(H)
(P)	(P)	(MA)	(MA)
(S)	(S)	(S)	(S)

8" (200 mm) TRAFFIC SIGNAL SECTION
 12" (300 mm) TRAFFIC SIGNAL SECTION
 12" (300 mm) PEDESTRIAN SIGNAL SECTION
 12" (300 mm) PEDESTRIAN SIGNAL SECTION
 CONTROLLER CABINET
 SERVICE INSTALLATION
 TELEPHONE CONNECTION
 VEHICLE DETECTOR, INDUCTION LOOP
 MAGNETIC DETECTOR
 EMERGENCY VEHICLE LIGHT DETECTOR
 CONFIRMATION BEACON
 PEDESTRIAN PUSHBUTTON DETECTOR
 DENOTES NUMBER OF CONDUCTORS. ALL CABLE NO. 14 EXCEPT AS INDICATED. ALL LOOP DETECTOR CABLE TO BE SHIELDED.
 GROUND CABLE IN CONDUIT NO. 6 SOLID COPPER (GREEN)
 LUMINAIRE

FIBER OPTIC CABLE IN CONDUIT NO. 62.5/125 2-MM12F SM12F
 SIGNAL FACE WITH BACKPLATE. "P" INDICATES PROGRAMMED HEAD.
 RAILROAD CONTROL CABINET
 ILLUMINATED SIGN "NO LEFT TURN"
 ILLUMINATED SIGN "NO RIGHT TURN"
 GROUND ROD AT HANDHOLE (H), DOUBLE HANDHOLE (H), OR CONTROLLER (C)
 GROUND ROD AT POST (P) OR MAST ARM POLE (MA)
 GROUND ROD AT ELECTRIC SERVICE INSTALLATION

REVISIONS

NAME	DATE

ILLINOIS DEPARTMENT OF TRANSPORTATION

PLAINFIELD ROAD (CH 31) AND SAWMILL DRIVE/MANNING ROAD CABLE PLAN, CONTROLLER SEQUENCE, EMERGENCY VEHICLE PREEMPTION SEQUENCE & SUMMARY OF QUANTITIES

SCALE: N/A
 DATE: 5/10/04

DRAWN BY: SRH & BSL
 DESIGNED BY: JM
 CHECKED BY: JM & SRH