

CABLE PLAN LEGEND

EXISTING	PROPOSED	DESCRIPTION
G	G	8" (200 mm) TRAFFIC SIGNAL SECTION
R	R	12" (300 mm) TRAFFIC SIGNAL SECTION
W	W	12" (300 mm) PEDESTRIAN SIGNAL SECTION
W	W	12" (300 mm) PEDESTRIAN SIGNAL SECTION
⊠	⊠	CONTROLLER CABINET
⊠	⊠	SERVICE INSTALLATION
⊠	⊠	TELEPHONE CONNECTION
⊠	⊠	VEHICLE DETECTOR, INDUCTION LOOP
⊠	⊠	MAGNETIC DETECTOR
⊠	⊠	EMERGENCY VEHICLE LIGHT DETECTOR
⊠	⊠	CONFIRMATION BEACON
⊠	⊠	PEDESTRIAN PUSHBUTTON DETECTOR
⊠	⊠	RAILROAD CONTROL CABINET
⊠	⊠	ILLUMINATED SIGN "NO LEFT TURN"
⊠	⊠	ILLUMINATED SIGN "NO RIGHT TURN"
H/C	C	GROUND ROD AT HANDHOLE (H), DOUBLE HANDHOLE (H), OR CONTROLLER (C)
P	P	GROUND ROD AT POST (P) OR MAST ARM POLE (MA)
S	S	GROUND ROD AT ELECTRIC SERVICE INSTALLATION

② DENOTES NUMBER OF CONDUCTORS. ALL CABLE NO. 14 EXCEPT AS INDICATED. ALL LOOP DETECTOR CABLE TO BE SHIELDED.

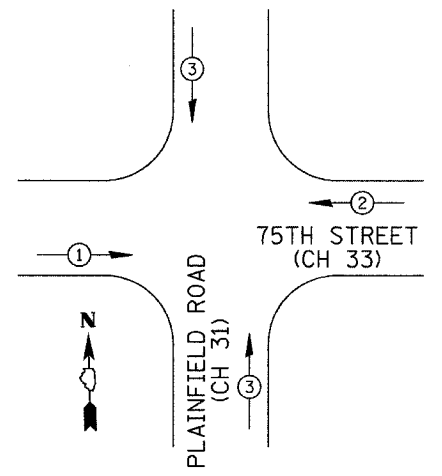
① GROUND CABLE IN CONDUIT NO. 6 SOLID COPPER (GREEN)

SCHEDULE OF QUANTITIES

81400115	HANDHOLE TO BE ADJUSTED	EACH	1
85000200	MAINTENANCE OF EXISTING TRAFFIC SIGNAL INSTALLATION	EACH	1
X8810610	PEDESTRIAN SIGNAL HEAD, L.E.D., 1-FACE, BRACKET MOUNTED	EACH	4
89502200	MODIFY EXISTING CONTROLLER	EACH	1
89502375	REMOVE EXISTING TRAFFIC SIGNAL EQUIPMENT	EACH	1

NOTE: REMOVE EXISTING TRAFFIC SIGNAL EQUIPMENT SHALL CONSIST OF THE REMOVAL OF FOUR EXISTING (TEXT) 1-FACE BRACKET MOUNTED PEDESTRIAN SIGNAL INDICATIONS, TO BE REPLACED WITH SYMBOL PEDESTRIAN INDICATIONS.

THE CONTRACTOR SHALL RETAIN POSSESSION OF THE REMOVED EQUIPMENT AND REFLECT THEIR SALVAGE VALUE IN HIS BID PRICE FOR THIS ITEM.



PROPOSED EMERGENCY VEHICLE PREEMPTION SEQUENCE

EMERGENCY VEHICLE PREEMPTOR	1	3	2
MOVEMENT	↔	↕	↔

I.D.O.T. TRAFFIC SIGNAL INSTALLATION ELECTRICAL SERVICE REQUIREMENTS

TYPE	NO. LAMPS	WATTAGE		% OPERATION	TOTAL WATTAGE
		INCAND	LED		
SIGNAL (RED)	4	135	-	0.50	270
(YELLOW)	4	135	-	0.25	135
(GREEN)	4	135	-	0.25	135
SIGNAL (RED)	14	150	-	0.50	1050
(YELLOW)	14	150	-	0.25	525
(GREEN)	14	150	-	0.25	525
ARROW	-	-	-	0.10	-
PED. SIGNALS	4	-	25	1.00	100
CONTROLLER	1	-	100	1.00	100
ILLUM. SIGN	-	-	-	0.05	-
FLASHER	-	-	-	-	-
					2840

ENERGY COSTS TO: DUPAGE COUNTY

ENERGY SUPPLY CONTACT:

FOUNDATION (DEPTH)	FT. (m)	CABLE SLACK	FT. (m)	VERTICAL	FT. (m)
TYPE A - POST	4 (1.2)	HANDHOLE	6.5 (2.0)	ALL FOUNDATIONS	3.5 (1.0)
D - CONTROLLER	4 (1.2)	DOUBLE HANDHOLE	13 (4.0)	MAST ARM (L) POLE	20'±L-2'±
E - MAST ARM POLE		SIGNAL POST	2 (1.0)	(6 m±L-0.6 m)±	
24" (600 mm)	10 (3.0)	CONTROLLER CABINET	1 (0.5)	BRACKET MOUNTED	13 (4.0)
30" (750 mm)	15 (4.6)	FIBER OPTIC	13 (4.0)	PEDESTRIAN PUSHBUTTON	4 (1.2)
		ELECTRIC SERVICE	1 (0.5)	ELECTRIC SERVICE	13.5 (4.1)
		GROUND CABLE	1 (0.5)	SERVICE TO GROUND	13.5 (4.1)
				POST MOUNTED	6 (1.8)

REVISIONS

NAME	DATE

ILLINOIS DEPARTMENT OF TRANSPORTATION

75TH STREET (CH 33) AND PLAINFIELD ROAD (CH 31)
CABLE PLAN, CONTROLLER SEQUENCE, EMERGENCY VEHICLE PREEMPTION SEQUENCE & SUMMARY OF QUANTITIES

SCALE: N/A
DATE: 5/10/04

DRAWN BY: SRH & BSL
DESIGNED BY: JM
CHECKED BY: JM & SRH