

PROPOSED PHASE DESIGNATION DIAGRAM

EXISTING PHASE DESIGNATION DIAGRAM

SCHEDULE OF QUANTITIES

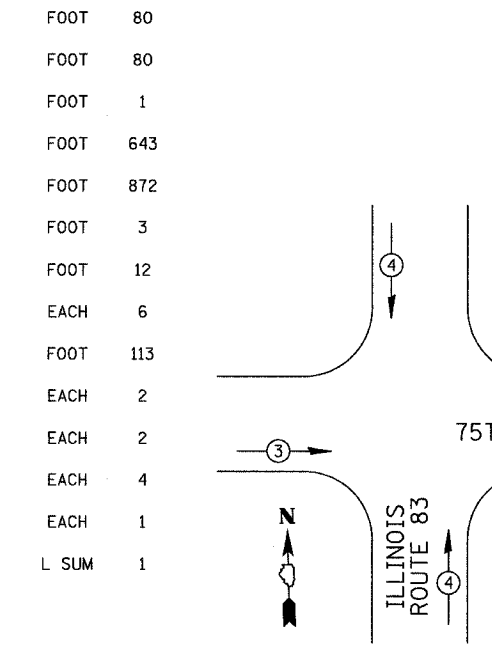
81000600	CONDUIT IN TRENCH, 2" DIA., GALVANIZED STEEL	FOOT	80
81500200	TRENCH AND BACKFILL FOR ELECTRICAL WORK	FOOT	80
85000200	MAINTENANCE OF EXISTING TRAFFIC SIGNAL INSTALLATION	FOOT	1
87301215	ELECTRIC CABLE IN CONDUIT, SIGNAL NO. 14 2/C	FOOT	643
87301225	ELECTRIC CABLE IN CONDUIT, SIGNAL NO. 14 3/C	FOOT	872
87502440	TRAFFIC SIGNAL POST, GALVANIZED STEEL, 10 FT.	FOOT	3
87800100	CONCRETE FOUNDATION, TYPE A	FOOT	12
87900200	DRILL EXISTING HANDHOLE	EACH	6
88600100	DETECTOR LOOP, TYPE 1	FOOT	113
X8810610	PEDESTRIAN SIGNAL HEAD, L.E.D., 1-FACE, BRACKET MOUNTED	EACH	2
X8810620	PEDESTRIAN SIGNAL HEAD, L.E.D., 2-FACE, BRACKET MOUNTED	EACH	2
88800100	PEDESTRIAN PUSHBUTTON	EACH	4
89502200	MODIFY EXISTING CONTROLLER	EACH	1
XX002856	RE-OPTIMIZE TRAFFIC SIGNAL SYSTEM	L SUM	1

I.D.O.T. TRAFFIC SIGNAL INSTALLATION ELECTRICAL SERVICE REQUIREMENTS					TOTAL WATTAGE
TYPE	NO. LAMPS	WATTAGE		% OPERATION	
SIGNAL (RED)	14	135	-	0.50	945.00
(YELLOW)	14	135	-	0.25	472.50
(GREEN)	14	135	-	0.25	472.50
SIGNAL (RED)	4	150	-	0.50	300.00
(YELLOW)	4	150	-	0.25	150.00
(GREEN)	4	150	-	0.25	150.00
ARROW	24	135	-	0.10	324.00
PED. SIGNALS	6	-	25	1.00	150.00
CONTROLLER	1	100	-	1.00	100.00
ILLUM. SIGN	-	-	-	0.05	-
FLASHER	-	-	-	-	-
					2964.00

ENERGY COSTS TO: DuPAGE COUNTY

ENERGY SUPPLY CONTACT:

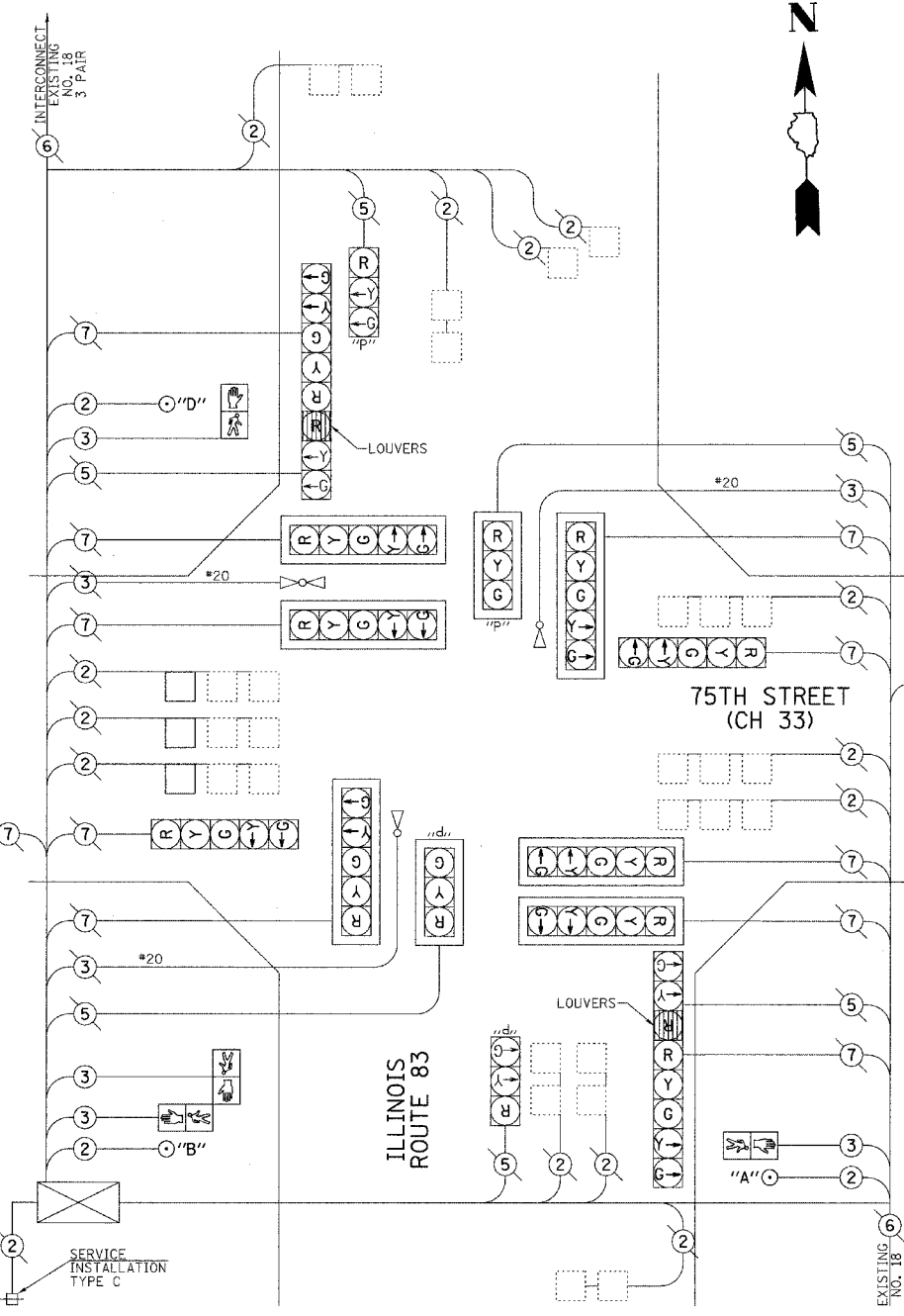
EMERGENCY VEHICLE PREEMPTION SEQUENCE



PROPOSED EMERGENCY VEHICLE PREEMPTORS		
EMERGENCY VEHICLE PREEMPTOR	3	4
MOVEMENT	← →	↑ ↓

EMERGENCY VEHICLE PREEMPTION SEQUENCE

FOUNDATION (DEPTH)	FT. (m)	CABLE SLACK	FT. (m)	VERTICAL	FT. (m)
TYPE A - POST	4 (1.2)	HANDHOLE	6.5 (2.0)	ALL FOUNDATIONS	3.5 (1.0)
D - CONTROLLER	4 (1.2)	DOUBLE HANDHOLE	13 (4.0)	MAST ARM (L) POLE	20'+L-2=
E - MAST ARM POLE		SIGNAL POST	2 (1.0)	(6 m+L-0.6 m)=	
	24" (600 mm)	CONTROLLER CABINET	1 (0.5)	BRACKET MOUNTED	13 (4.0)
	30" (750 mm)	FIBER OPTIC	13 (4.0)	PEDESTRIAN PUSHBUTTON	4 (1.2)
		ELECTRIC SERVICE	1 (0.5)	ELECTRIC SERVICE	13.5 (4.1)
		GROUND CABLE	1 (0.5)	SERVICE TO GROUND	13.5 (4.1)
				POST MOUNTED	6 (1.8)



CABLE PLAN

PUSHBUTTON NOTES

- PUSHBUTTON "A" SHALL PLACE A CALL IN PHASE 4 ONLY.
- PUSHBUTTON "B" SHALL PLACE A CALL IN PHASES 4 AND 6.
- PUSHBUTTON "C" SHALL PLACE A CALL IN PHASES 6 AND 4.
- PUSHBUTTON "D" SHALL PLACE A CALL IN PHASE 6 ONLY.

CABLE PLAN LEGEND

EXISTING	PROPOSED	DESCRIPTION
		8" (200 mm) TRAFFIC SIGNAL SECTION
		12" (300 mm) TRAFFIC SIGNAL SECTION
		12" (300 mm) PEDESTRIAN SIGNAL SECTION
		12" (300 mm) PEDESTRIAN SIGNAL SECTION
		CONTROLLER CABINET
		SERVICE INSTALLATION
		TELEPHONE CONNECTION
		VEHICLE DETECTOR, INDUCTION LOOP
		MAGNETIC DETECTOR
		EMERGENCY VEHICLE LIGHT DETECTOR
		CONFIRMATION BEACON
		PEDESTRIAN PUSHBUTTON DETECTOR
		2 DENOTES NUMBER OF CONDUCTORS. ALL CABLE NO. 14 EXCEPT AS INDICATED. ALL LOOP DETECTOR CABLE TO BE SHIELDED.
		1 GROUND CABLE IN CONDUIT NO. 6 SOLID COPPER (GREEN)
		24 FIBER OPTIC CABLE IN CONDUIT NO. 62.5/125 2-MMI2F SM12F
		SIGNAL FACE WITH BACKPLATE. "P" INDICATES PROGRAMMED HEAD.
		"E" RAILROAD CONTROL CABINET
		"E" ILLUMINATED SIGN "NO LEFT TURN"
		"E" ILLUMINATED SIGN "NO RIGHT TURN"
		H/C GROUND ROD AT HANDHOLE (H), DOUBLE HANDHOLE (H), OR CONTROLLER (C)
		P GROUND ROD AT POST (P) OR MAST ARM POLE (MA)
		S GROUND ROD AT ELECTRIC SERVICE INSTALLATION

REVISIONS	
NAME	DATE

ILLINOIS DEPARTMENT OF TRANSPORTATION

75TH STREET (CH 33) AND ILLINOIS ROUTE 83

CABLE PLAN, CONTROLLER SEQUENCE, EMERGENCY VEHICLE PREEMPTION SEQUENCE & SUMMARY OF QUANTITIES

SCALE: N/A

DATE: 5/5/04

DRAWN BY: SRH & BSL
DESIGNED BY: JM
CHECKED BY: JM & SRH