

F.A.U. RTE.	SECTION	COUNTY	TOTAL SHEETS	SHEET NO.
	02-00048-00-BR	COOK	27	10
STA.	TO STA.			
FED. ROAD DIST. NO.	ILLINOIS	FED. AID PROJECT		
CONTRACT NO. 83779				

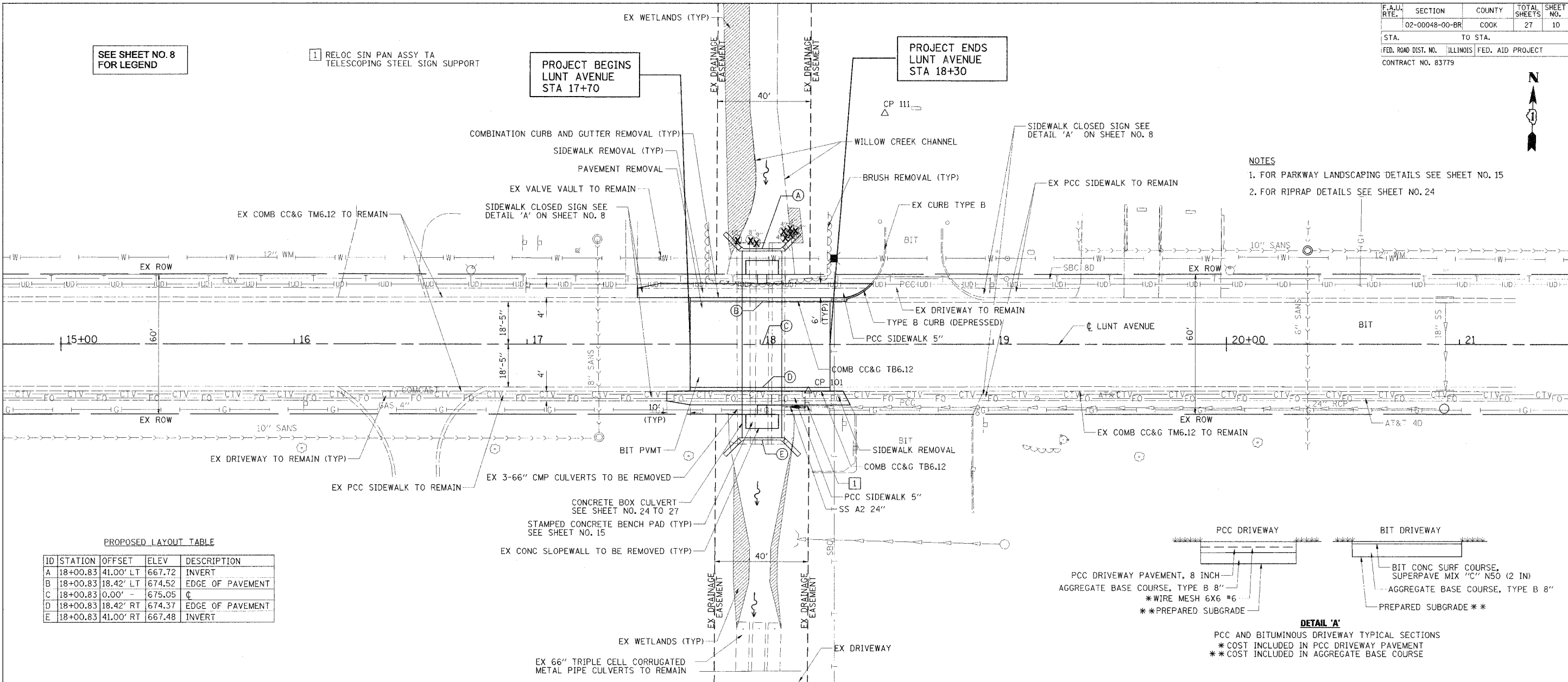
SEE SHEET NO. 8 FOR LEGEND

1 RELOC SIN PAN ASSY TA TELESCOPING STEEL SIGN SUPPORT

PROJECT BEGINS LUNT AVENUE STA 17+70

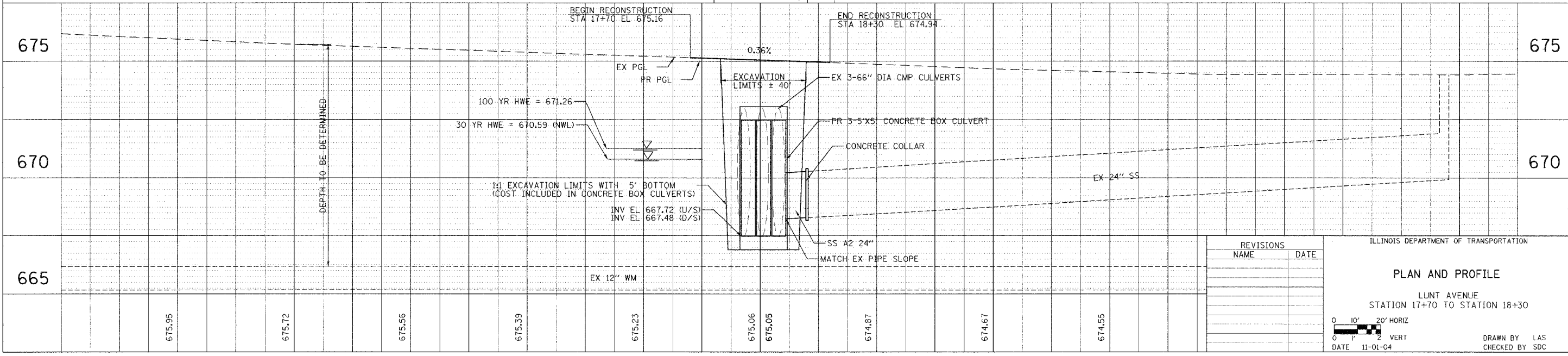
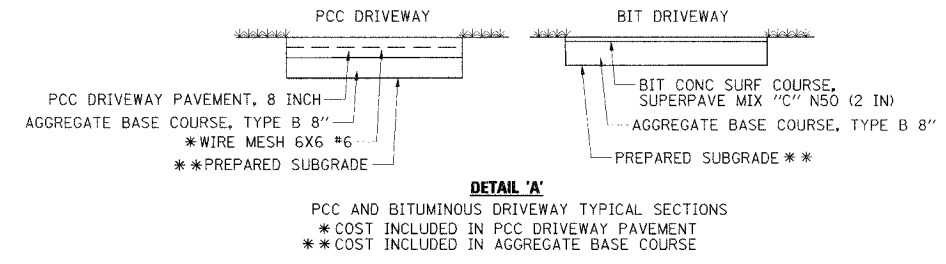
PROJECT ENDS LUNT AVENUE STA 18+30

- NOTES
- FOR PARKWAY LANDSCAPING DETAILS SEE SHEET NO. 15
 - FOR RIPRAP DETAILS SEE SHEET NO. 24



PROPOSED LAYOUT TABLE

ID	STATION	OFFSET	ELEV	DESCRIPTION
A	18+00.83	41.00' LT	667.72	INVERT
B	18+00.83	18.42' LT	674.52	EDGE OF PAVEMENT
C	18+00.83	0.00'	675.05	CL
D	18+00.83	18.42' RT	674.37	EDGE OF PAVEMENT
E	18+00.83	41.00' RT	667.48	INVERT



REVISIONS	
NAME	DATE

ILLINOIS DEPARTMENT OF TRANSPORTATION

PLAN AND PROFILE

LUNT AVENUE
STATION 17+70 TO STATION 18+30

0 10' 20' HORIZ
0 1' 2' VERT
DATE 11-01-04

DRAWN BY LAS
CHECKED BY SOC

11/02/2004 08:35:43 PM
g:\03\023\road\ppl\lunt.sht

V:\03\023\road\ppl\lunt.sht 11/02/2004 08:35:43 PM