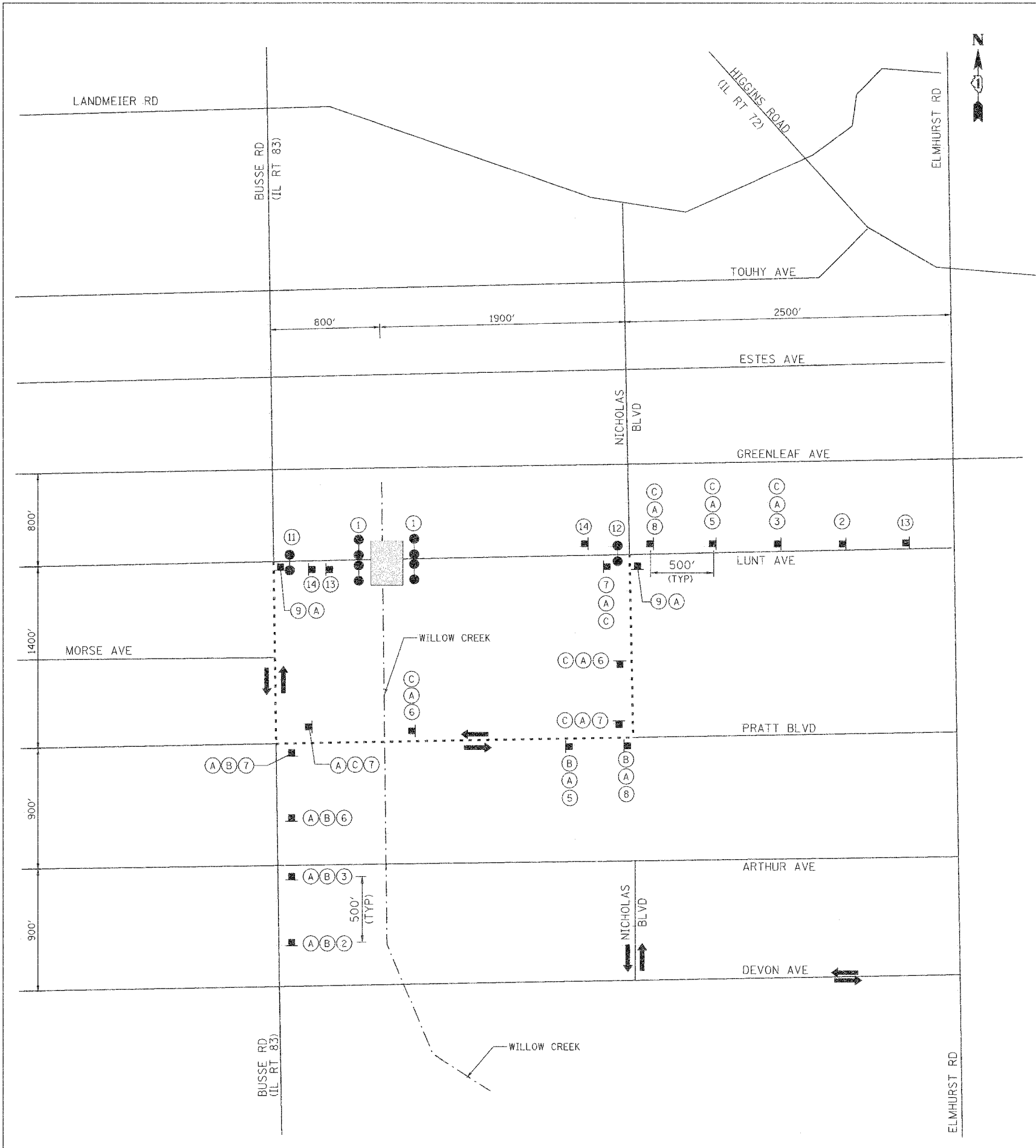


F.A.U. RTE.	SECTION	COUNTY	TOTAL SHEETS	SHEET NO.
02-00048-00-BR	COOK	27	13	
STA. TO STA.		ILLINOIS FED. AID PROJECT		
CONTRACT NO. 83779				

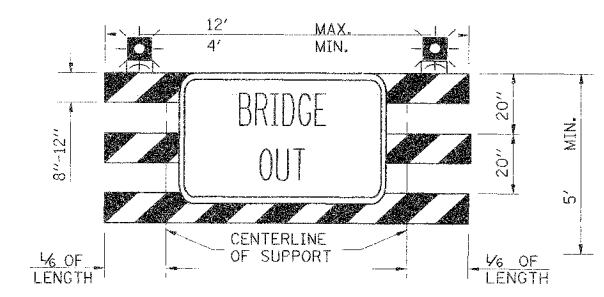


**LEGEND**

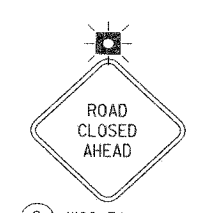
- TYPE III BARRICADE
- SIGN ON PORTABLE OR PERMANENT SUPPORT
- SIGN DESCRIPTION NUMBER
- TWO-WAY TRAFFIC FLOW
- FLASHING LIGHT
- DETOUR ROUTE
- WORK AREA

**NOTES**

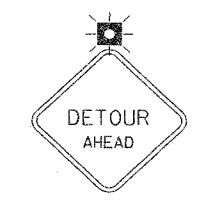
1. ALL DETOUR SIGNING SHALL MEET THE REQUIREMENTS OF ARTICLE 1084.04 OF THE STANDARD SPECIFICATIONS.
2. ALL SIGNS SHALL BE BLACK ON WHITE ON REFLECTIVE SHEETING UNLESS OTHERWISE SPECIFIED.
3. DETOUR ROUTE SIGNING SHALL BE INCLUDED IN TRAFFIC CONTROL AND PROTECTION (DETOUR).
4. A BARRIER MEDIAN ALONG IL 83 (BUSSE ROAD) AT LUNT AVENUE PREVENTS VEHICLES FROM THE NORTH AND WEST APPROACHES TO ENTER EASTBOUND LUNT AVENUE.



1 BRIDGE OUT  
TYPE III BARRICADE WITH  
STANDARD FLASHING LIGHTS (2 EACH)  
(DOT HWY STD 702001)  
W/ R11-2 (48" x 30")



2 W20-3A  
48" X 48"  
BLACK ON ORANGE



3 W20-2  
48" X 48"  
VAR. X 6"  
BLACK ON ORANGE


ANOTHER PROJECT FUNDED BY THE INDUSTRIAL/COMMERCIAL REVITALIZATION PROGRAM

THANK YOU FOR YOUR PATIENCE AND COOPERATION

FOR INFORMATION CALL ENGINEERING AND COMMUNITY DEVELOPMENT AT 317-4230

ICRC PROJECT INFORMATION SIGN  
60" X 48" ALUMINUM SIGN  
ON STEEL SUPPORTS  
(SIGN FURNISHED BY VILLAGE)

REVISIONS	
NAME	DATE

ILLINOIS DEPARTMENT OF TRANSPORTATION

**DETOUR SIGNING PLAN**

WILLOW CREEK CULVERTS  
LUNT AVENUE

DATE 11-01-04

DRAWN BY LAS  
CHECKED BY SDC