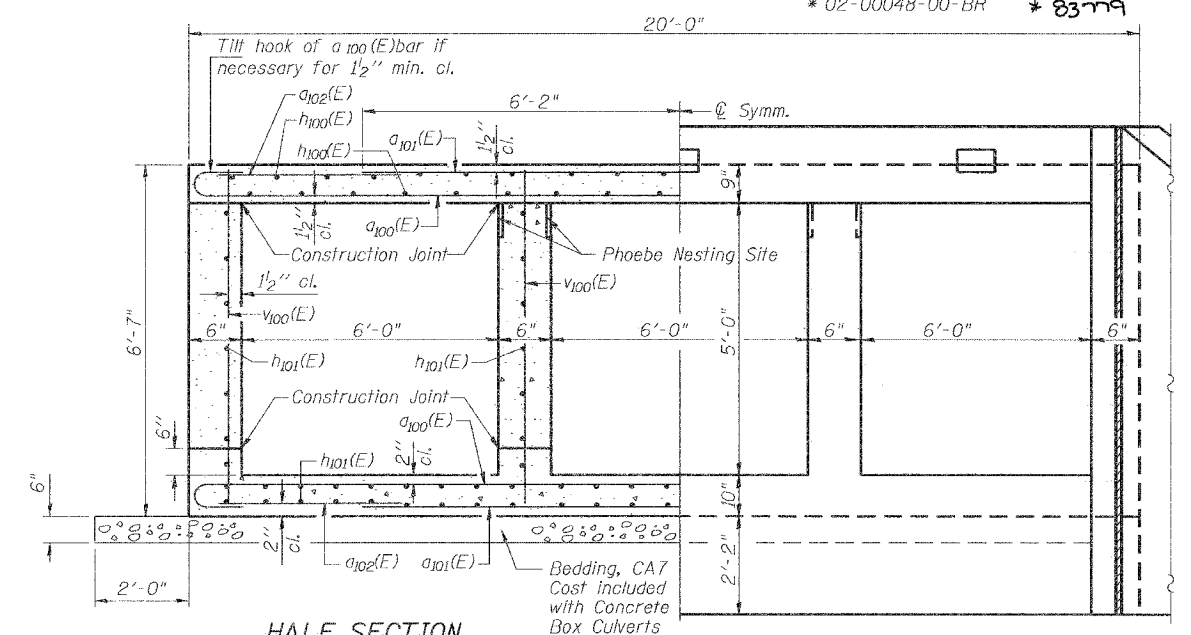


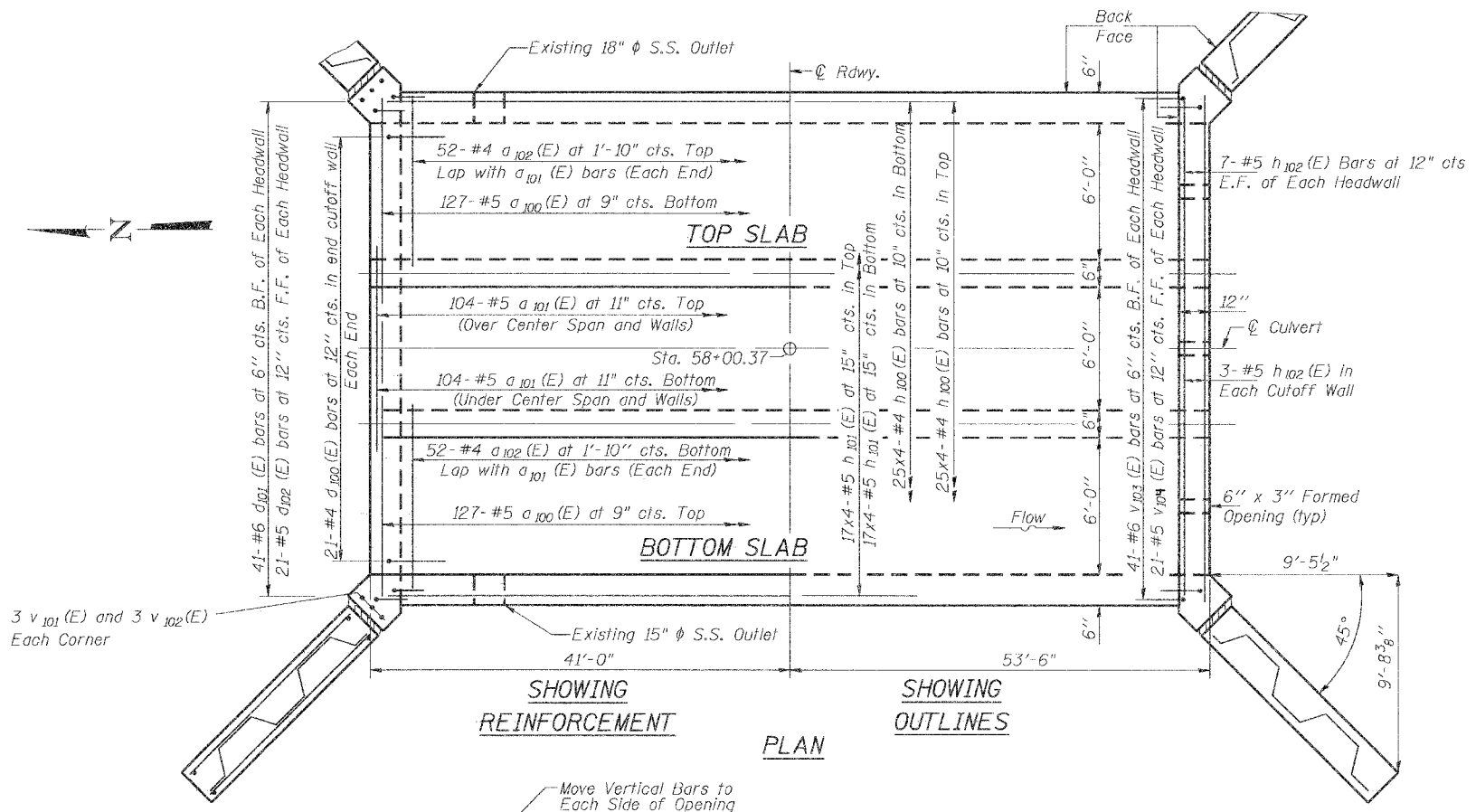
HALF LONG. SECTION
Showing bars in Inside Walls
(Looking East)

HALF ELEVATION
Showing bars in Outside Walls
(Looking East)



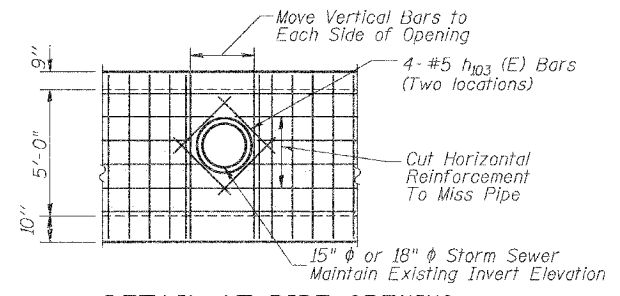
HALF SECTION THRU BARREL

HALF END ELEVATION

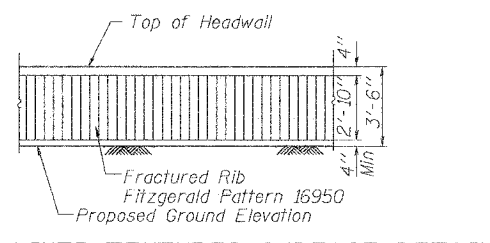


SHOWING REINFORCEMENT

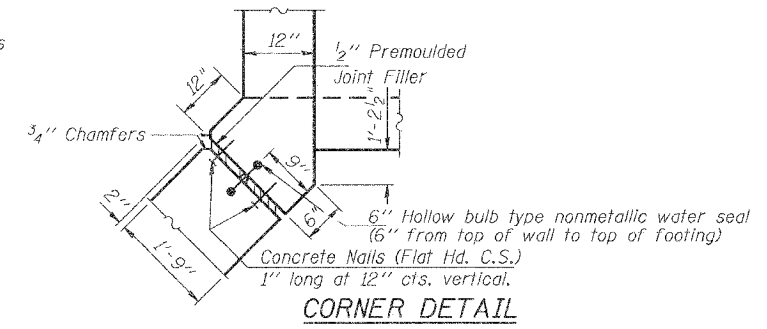
SHOWING OUTLINES



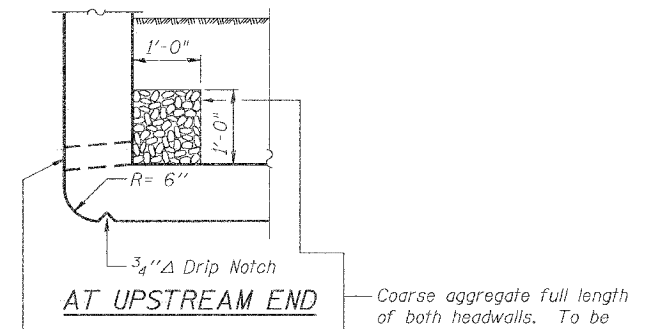
DETAIL AT PIPE OPENING



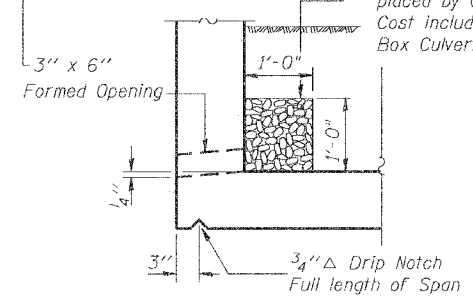
FORM LINER TEXTURED SURFACE DETAIL



CORNER DETAIL

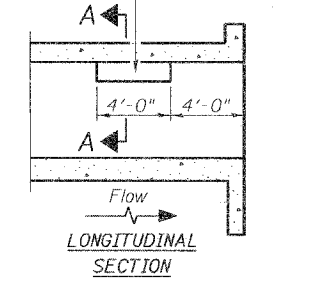


AT UPSTREAM END

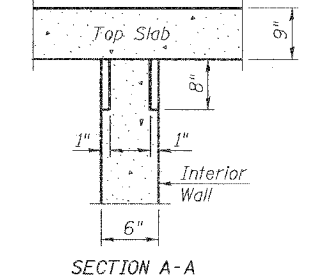


AT DOWNSTREAM END

Notch formed by rough finished board attached to and removed with formwork, each interior wall. (Do not chamfer).



LONGITUDINAL SECTION



SECTION A-A

PHOEBE NESTING SITE DETAILS
(Downstream End Only)

Notes: Reinforcement bars designated (E) shall be epoxy coated.
Bars indicated thus 12x4-#5 etc. indicates 12 lines of bars with 4 lengths per line.

CULVERT PLAN AND SECTIONS

ARTHUR AVENUE OVER WILLOW CREEK
SECTION 02-00048-00-BR
COOK COUNTY
STATION 58+00.37

11/01/2004 04:42:28 PM G:\CH03\0231\Structural\CPA\thru.sht