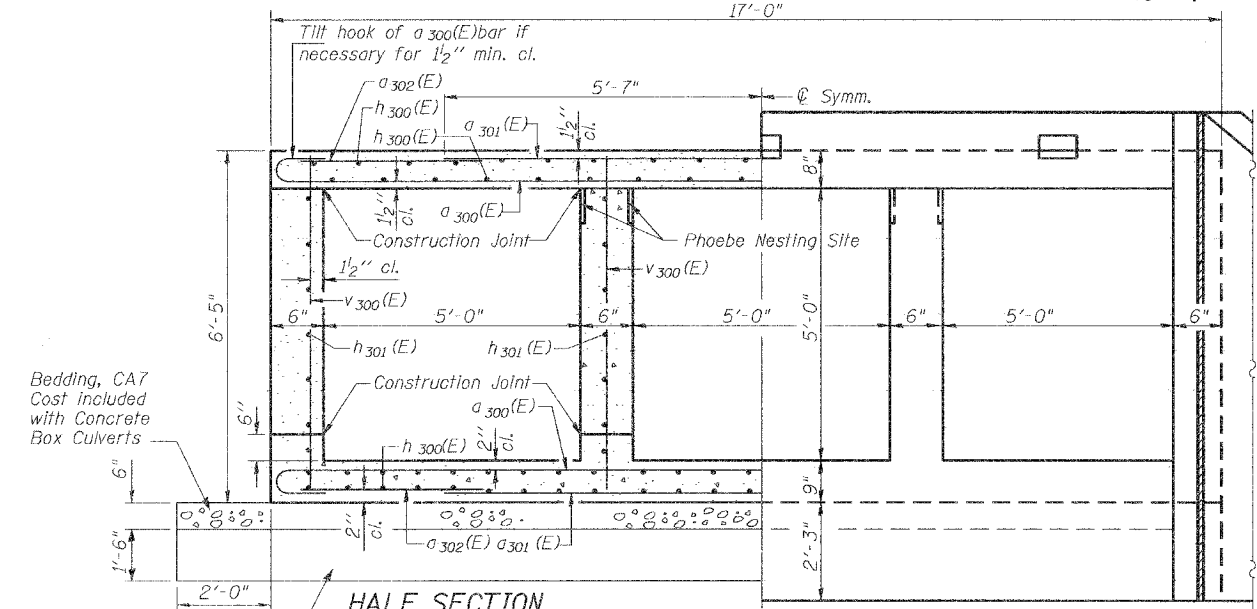


HALF LONG SECTION
Showing bars in Inside Walls
(Looking East)

HALF ELEVATION
Showing bars in Outside Walls
(Looking East)



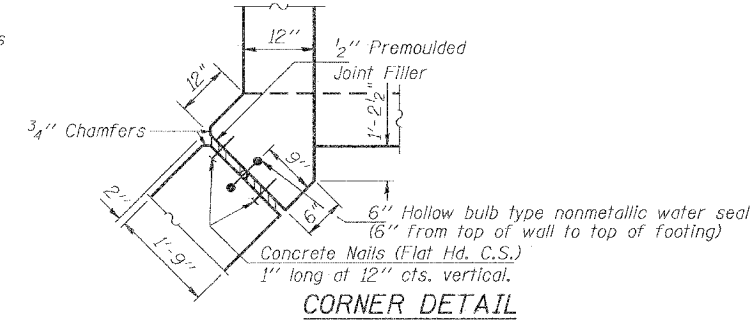
HALF SECTION THRU BARREL

HALF END ELEVATION

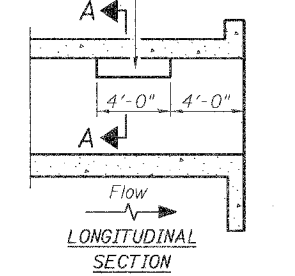
Bedding, CA7
Cost included with Concrete
Box Culverts

Removal and Disposal
of Unsuitable Material,
to be replaced with
Sub-base Granular
Material, Type C.

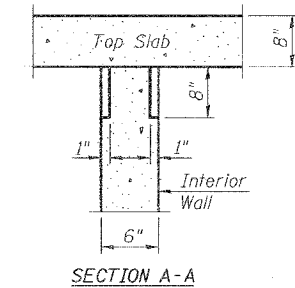
Notch formed by rough finished
board attached to and removed
with formwork, each interior wall.
(Do not chamfer).



CORNER DETAIL

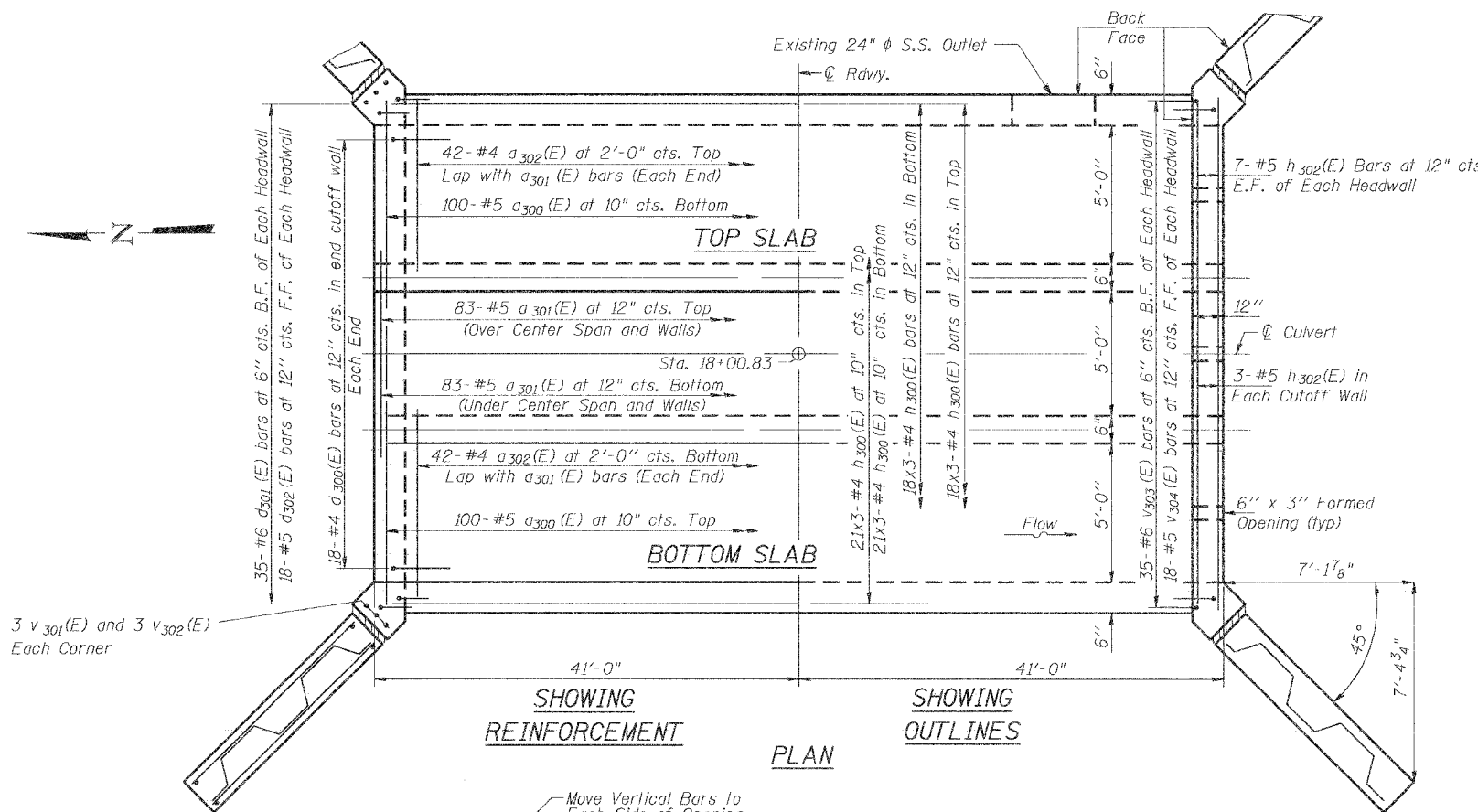


LONGITUDINAL SECTION



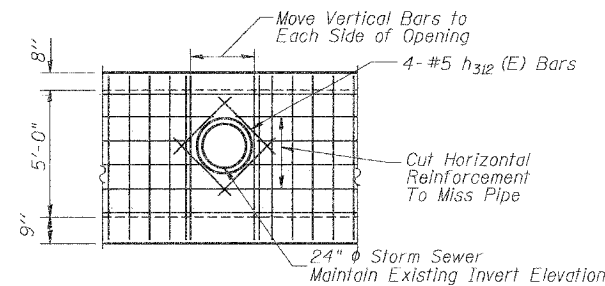
**SECTION A-A
PHOEBE NESTING
SITE DETAILS**
(Downstream End Only)

Notes: Reinforcement bars designated (E) shall
be epoxy coated.
Bars indicated thus 12x4-#5 etc. indicates
12 lines of bars with 4 lengths per line.

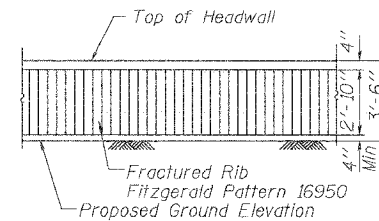


SHOWING REINFORCEMENT

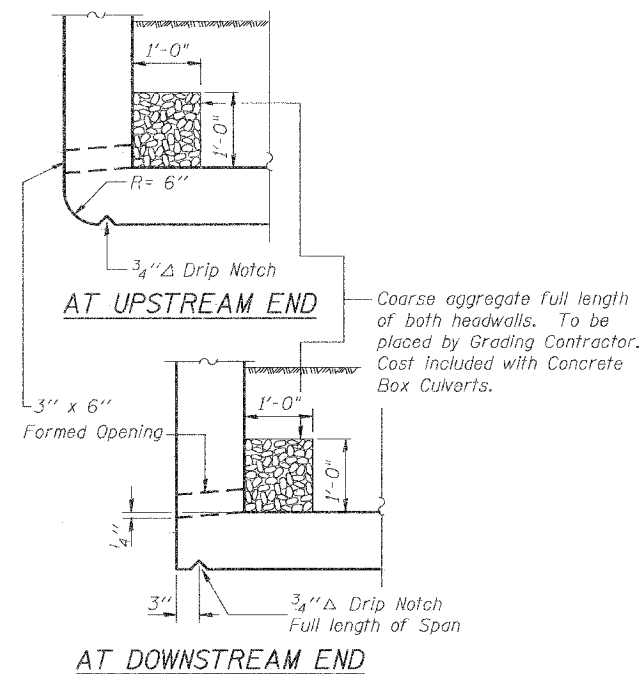
SHOWING OUTLINES



DETAIL AT PIPE OPENING



FORM LINER TEXTURED SURFACE DETAIL



AT UPSTREAM END

AT DOWNSTREAM END

CULVERT PLAN AND SECTIONS

LUNT AVENUE OVER WILLOW CREEK
SECTION 02-00048-00-BR
COOK COUNTY
STATION 18+00.83