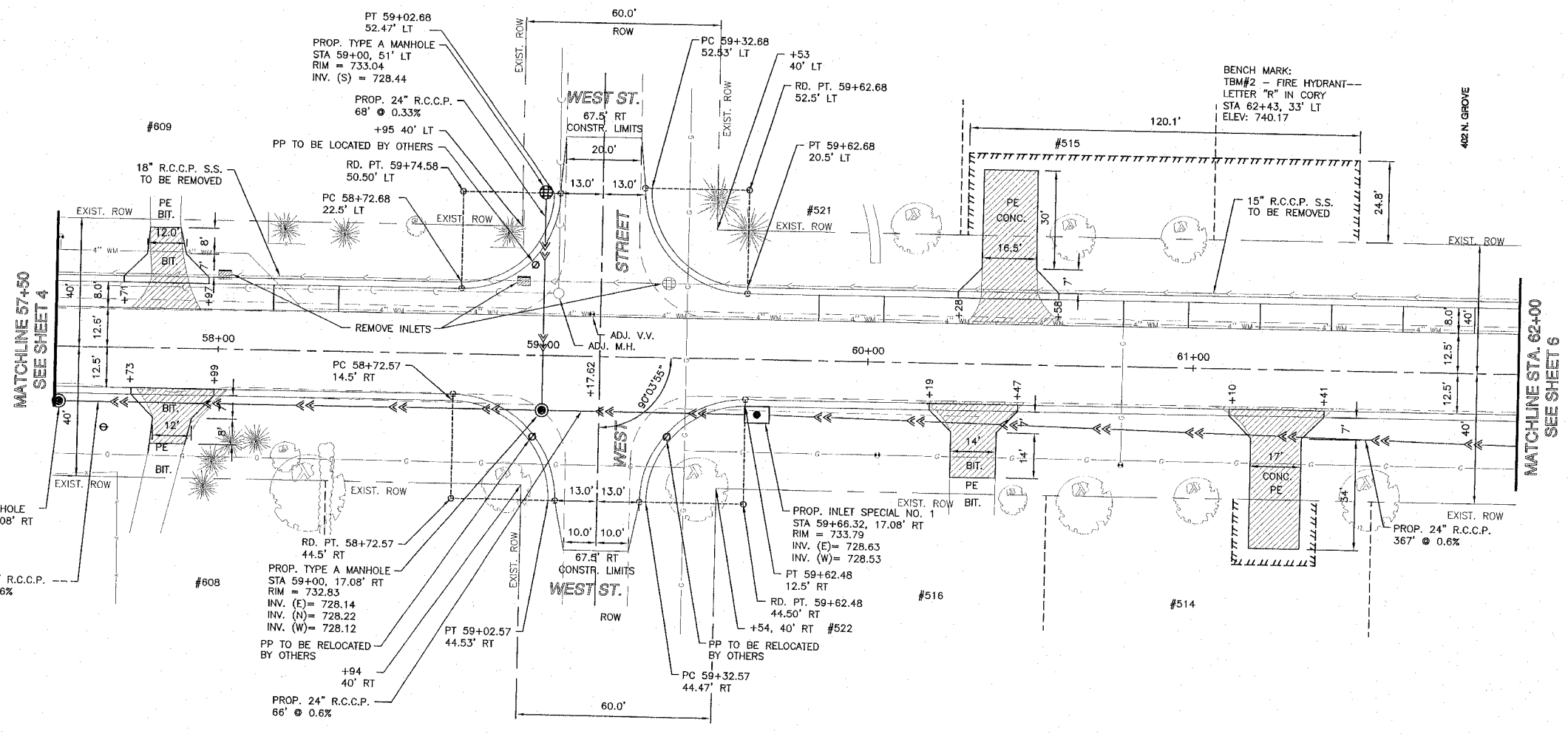
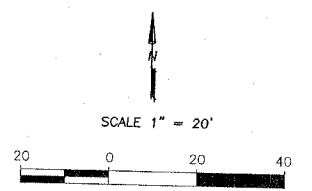


RTE.	SECTION	COUNTY	TOTAL SHEETS	SHEET NO.
FAU 9878	93-00027-00-FP	WINNEBAGO	22	5
F.H.W.A. REG	ILLINOIS	PROJECT:	M-5291	(6)



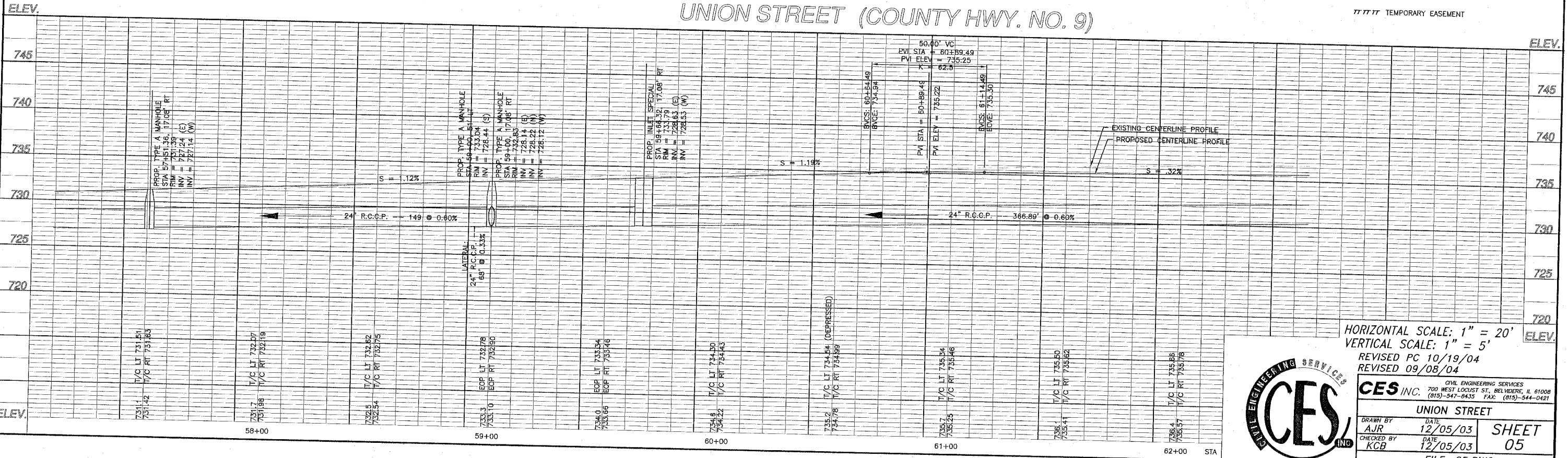
PROP. TYPE A MANHOLE  
STA 57+51.36, 17.08' RT  
RIM = 731.39  
INV. (E) = 727.24  
INV. (W) = 727.14

PROP. TYPE A MANHOLE  
STA 59+00, 17.08' RT  
RIM = 732.83  
INV. (E) = 728.14  
INV. (N) = 728.22  
INV. (W) = 728.12

PROP. INLET SPECIAL NO. 1  
STA 59+66.32, 17.08' RT  
RIM = 733.79  
INV. (E) = 728.63  
INV. (W) = 728.53

PROP. 24" R.C.C.P.  
367' @ 0.6%

UNION STREET (COUNTY HWY. NO. 9)



NOTE:  
ALL COMB. CURB & GUTTER  
WILL BE TYPE B6.18.

NOTE:  
PRIOR TO CONSTRUCTION  
MAILBOXES BETWEEN RACE STREET AND  
WEST STREET TO BE MOVED TO CENTRAL  
LOCATION—SOUTH OF UNION STREET  
BETWEEN MILL RACE AND RACE STREET.

WHEN CONSTRUCTION IS COMPLETED  
MAILBOXES TO BE REPLACE AT  
ORIGINAL STATIONS.

(MAIL ROUTE IS A WALKING ROUTE)  
MAILBOX ORIGINAL LOCATIONS  
57+67, 24' LT.  
58+02, 16' RT.

TEMPORARY EASEMENT

HORIZONTAL SCALE: 1" = 20'  
VERTICAL SCALE: 1" = 5'  
REVISED PC 10/19/04  
REVISED 09/08/04



<b>CES INC.</b> <small>CIVIL ENGINEERING SERVICES                  700 WEST LOCUST ST., BELLEVILLE, IL 61008                  (815)-547-8435 FAX: (815)-544-0421</small>	
UNION STREET	
DRAWN BY AJR	DATE 12/05/03
CHECKED BY KCB	DATE 12/05/03
SHEET 05	
FILE: 05.DWG	