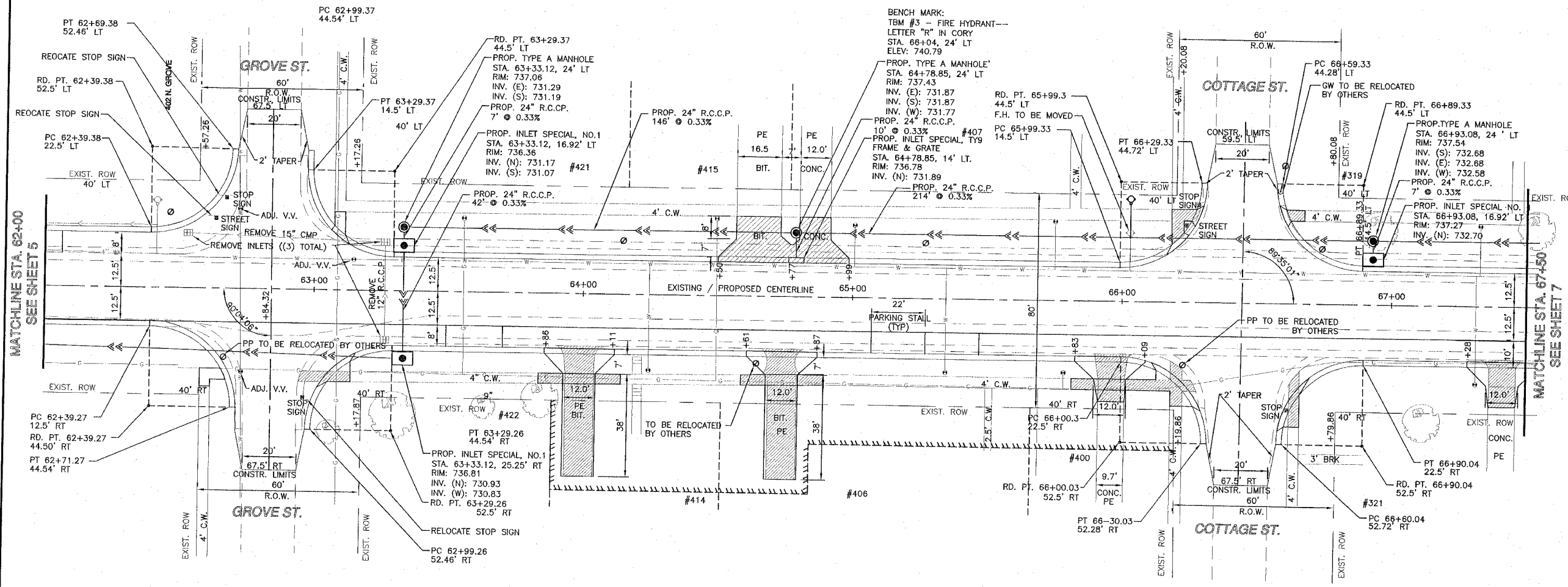
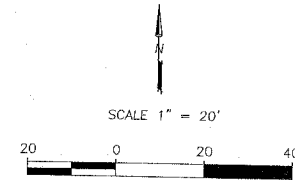
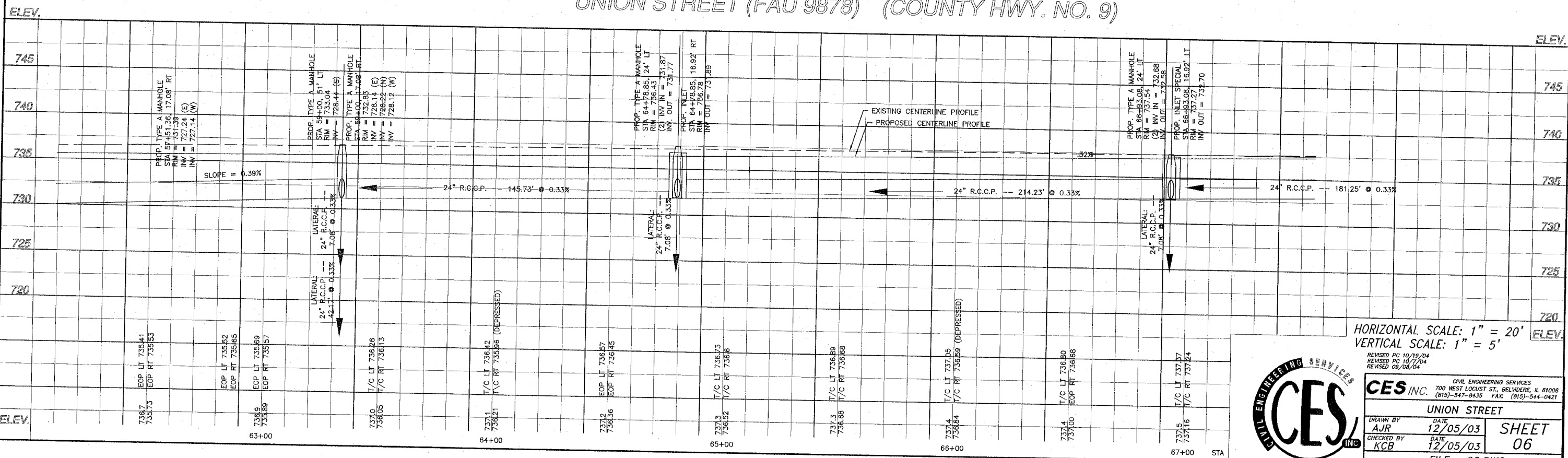


RT.	SECTION	COUNTY	TOTAL SHEETS	SHEET NO.
FAU 9878	93-00027-00-FP	WINNEBAGO	22	6
F.H.W.A. REG	ILLINOIS	PROJECT:	M-5291 (8)	



UNION STREET (FAU 9878) (COUNTY HWY. NO. 9)

NOTE:
ALL PROPOSED RADII ARE 30' FLAG OF CURB.
ALL COMB. CURB & GUTTER WILL BE TYPE B6.18.
TEMPORARY EASEMENT



HORIZONTAL SCALE: 1" = 20'
VERTICAL SCALE: 1" = 5'



CES INC. CIVIL ENGINEERING SERVICES
700 WEST LOCUST ST., BELVIDERE, IL 61008
(815)-547-8435 FAX: (815)-544-0421

UNION STREET
DRAWN BY: AJR DATE: 12/05/03
CHECKED BY: KCB DATE: 12/05/03
SHEET 06
FILE: 06.DWG