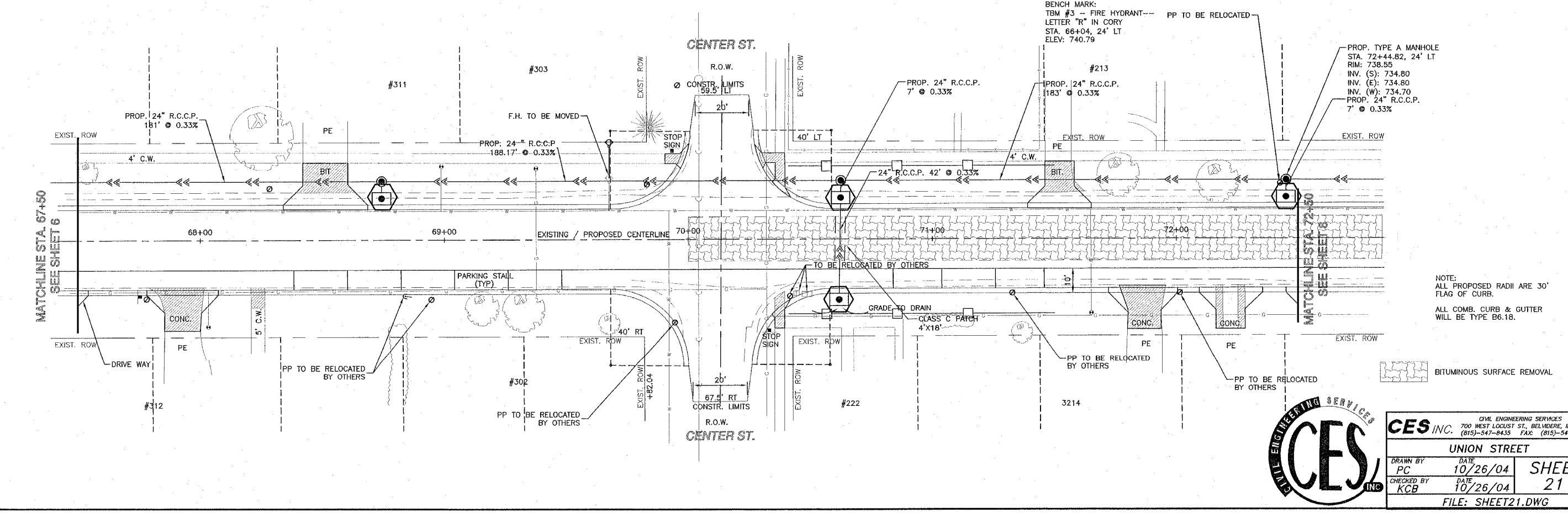
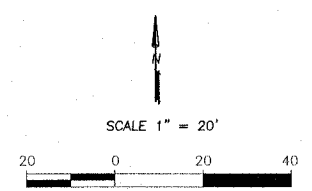
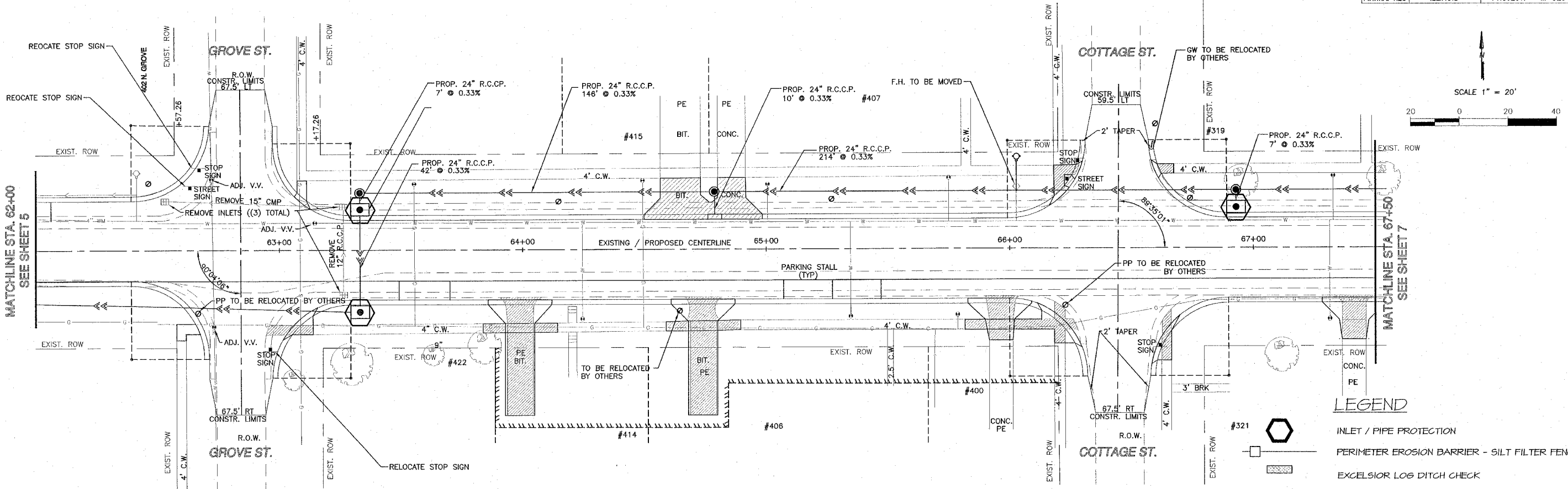


RTE.	SECTION	COUNTY	TOTAL SHEETS	SHEET NO.
FAU 987B	93-00027-00-FP	WINNEBAGO	22	21
F.H.W.A. REG	ILLINOIS	PROJECT:	M-5291	(B)



NOTE:
ALL PROPOSED RADII ARE 30'
FLAG OF CURB.
ALL COMB. CURB & GUTTER
WILL BE TYPE B6.18.



CES INC.		CIVIL ENGINEERING SERVICES 700 WEST LOCUST ST., BELLEVUE, IL 61008 (815)-547-8433 FAX: (815)-544-0421	
UNION STREET			
DRAWN BY <i>PC</i>	DATE 10/26/04	SHEET 21	
CHECKED BY <i>KCB</i>	DATE 10/26/04		
FILE: SHEET21.DWG			