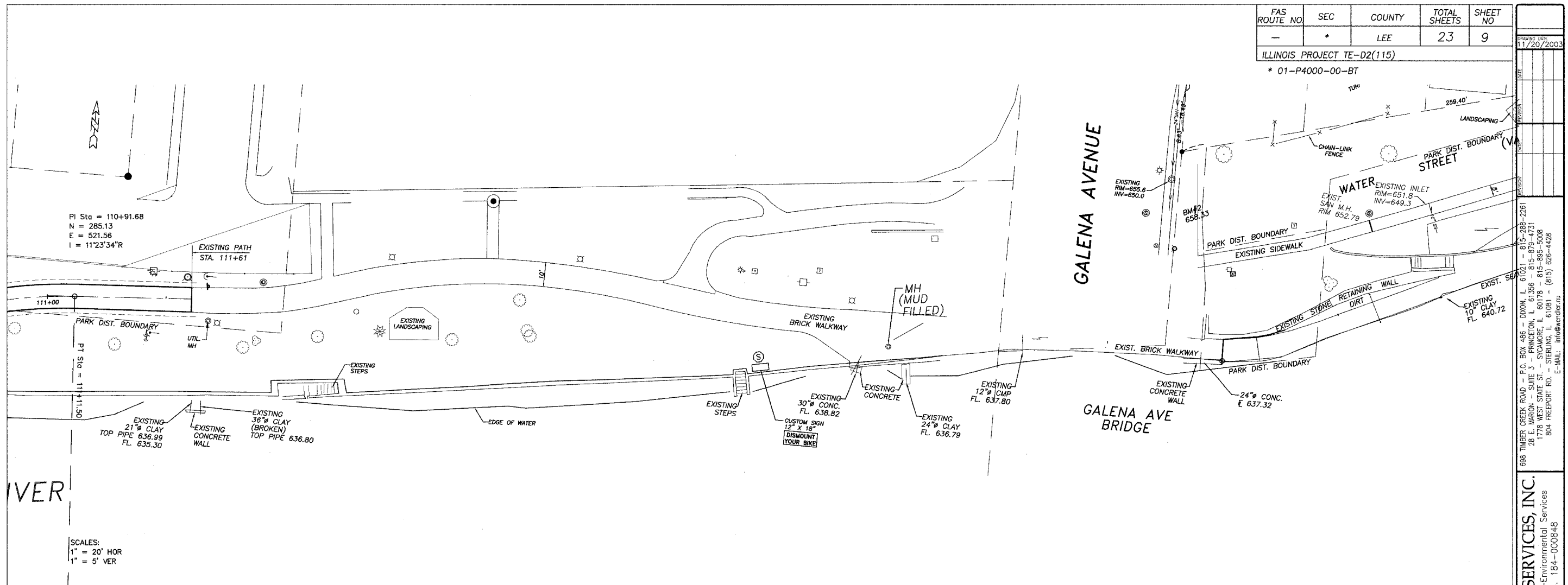
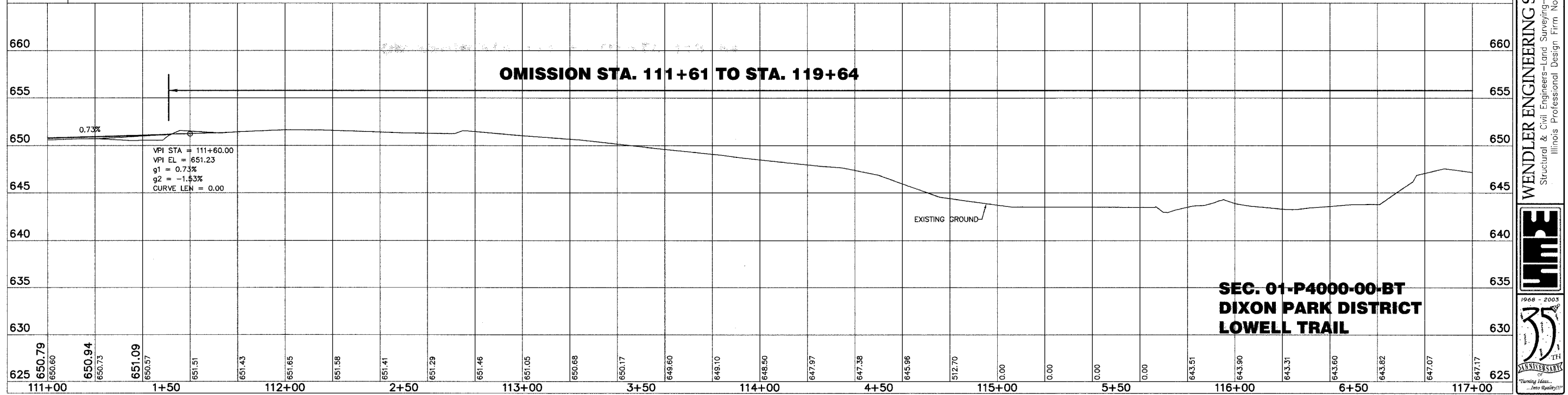


FAS ROUTE NO	SEC	COUNTY	TOTAL SHEETS	SHEET NO
-	*	LEE	23	9

ILLINOIS PROJECT TE-D2(115)
* 01-P4000-00-BT



SCALES:
1" = 20' HOR
1" = 5' VER



**SEC. 01-P4000-00-BT
DIXON PARK DISTRICT
LOWELL TRAIL**

DRAWING DATE 11/20/2003

698 TIMBER CREEK ROAD - P.O. BOX 466 - DIXON, IL 61021 - 815-286-7261
28 L. MARION - SUITE 3 - PRINCETON, IL 61356 - 815-879-4731
1776 WEST STATE ST. - SPONGER, IL 60178 - 815-895-5008
804 FREEMONT RD. - STERLING, IL 61081 - (815) 626-4428
E-MAIL: info@wendler.com

WENDLER ENGINEERING SERVICES, INC.
Structural & Civil Engineers-Land Surveying-Environmental Services
Illinois Professional Design Firm No. 184-000848

1968 - 2003
125th Anniversary

F:\PROJECTS\1117\1117.DWG 10/15/03 10:54:41 AM ESE